

**ELECTRICAL LEGEND**

SYMBOLS USED ARE INDICATED BY A CHECK

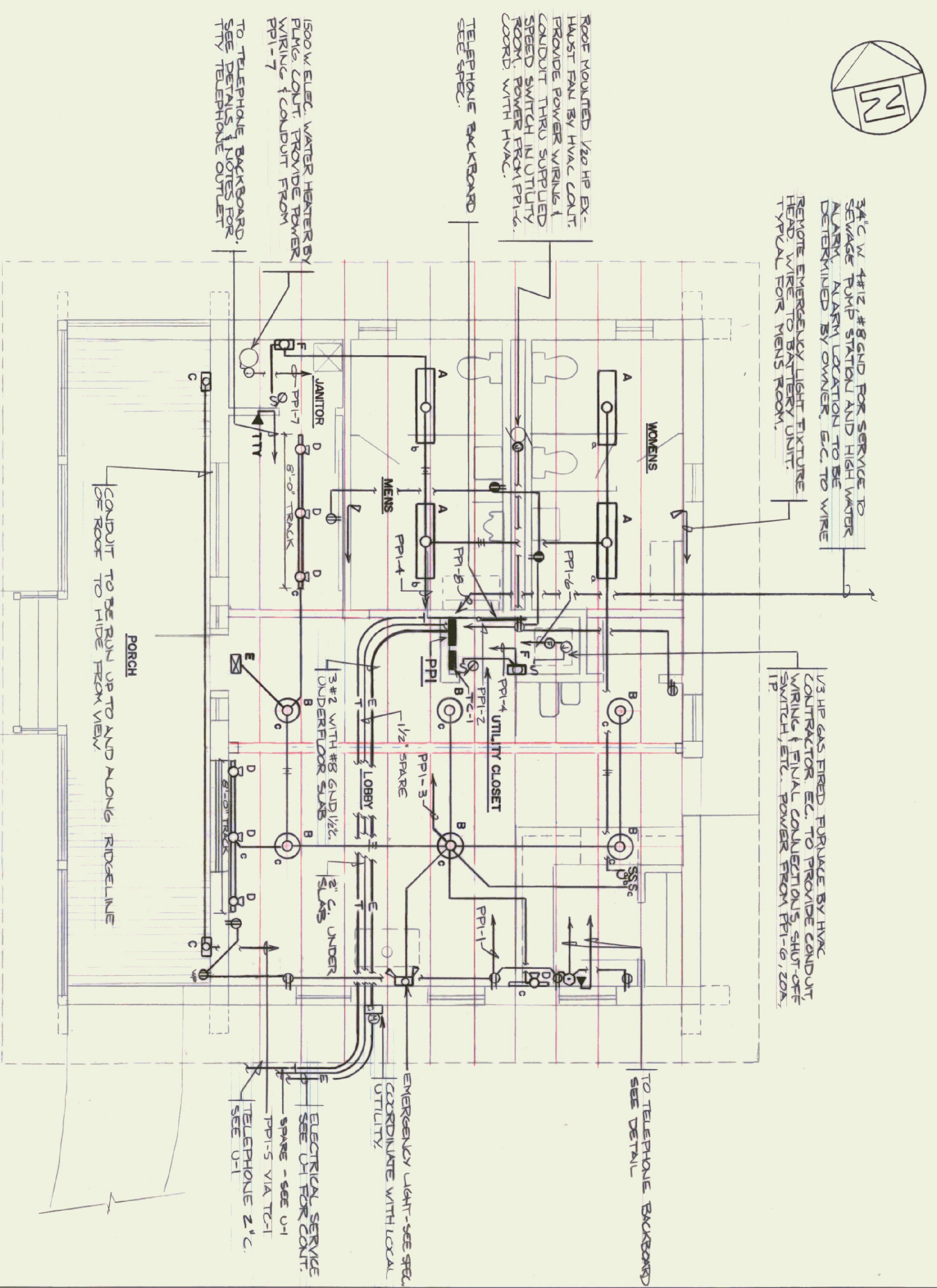
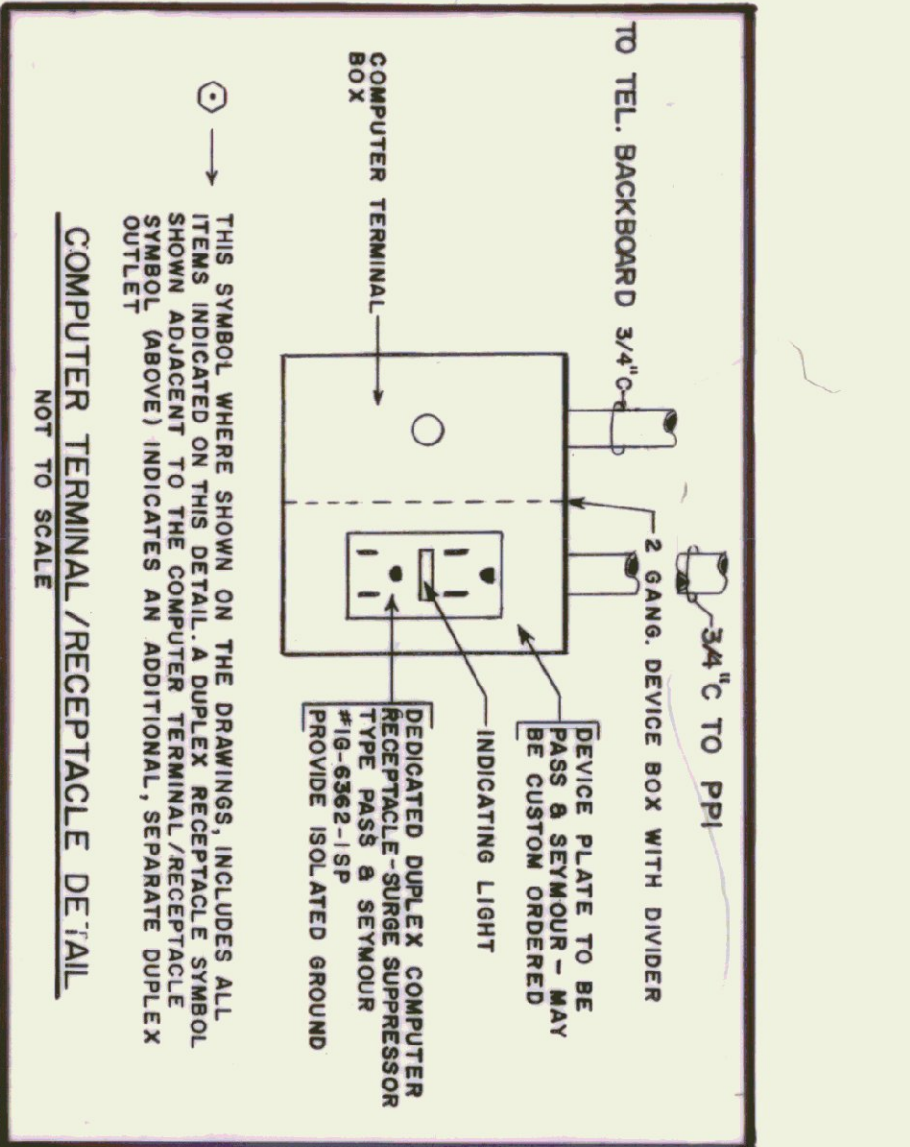
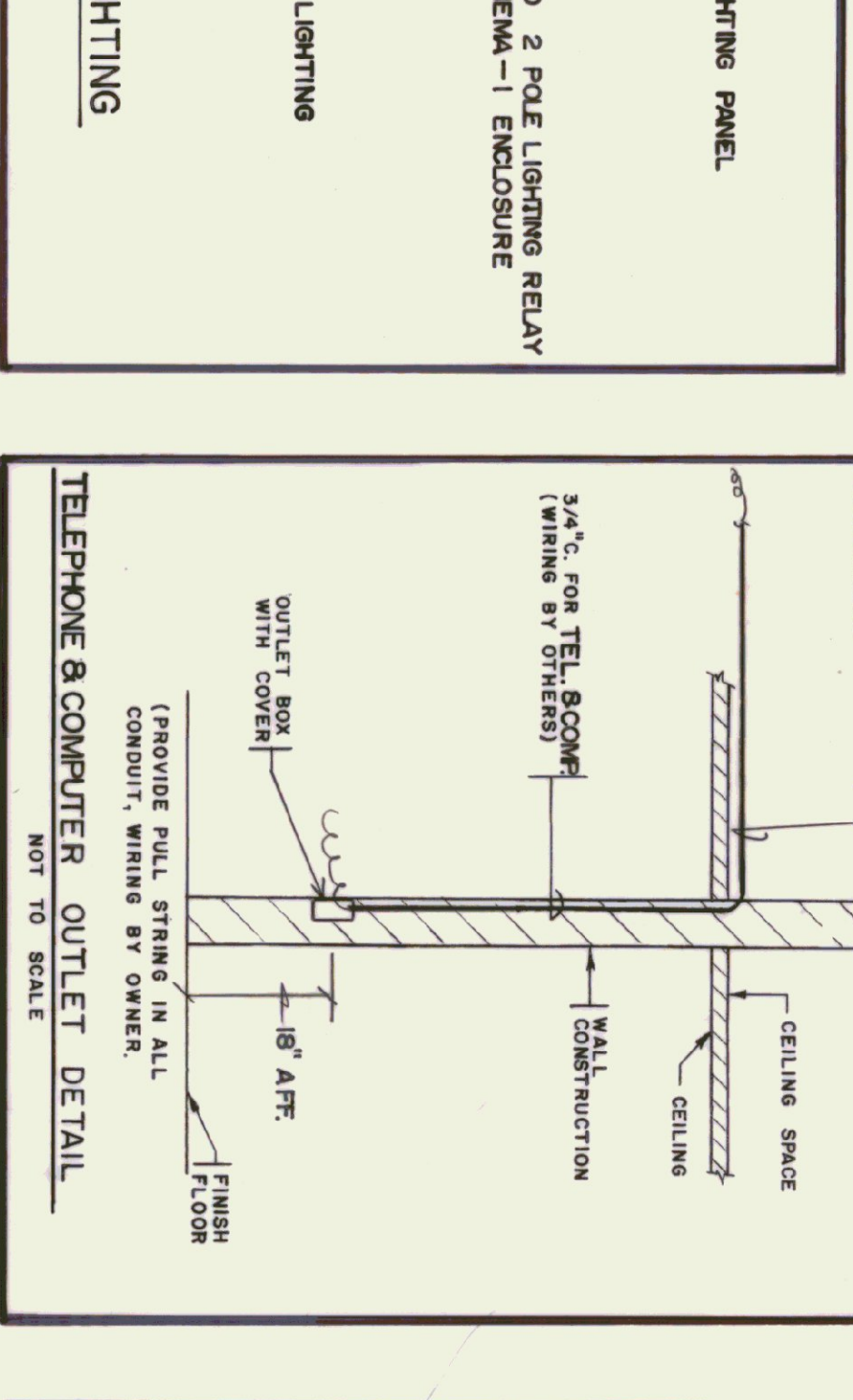
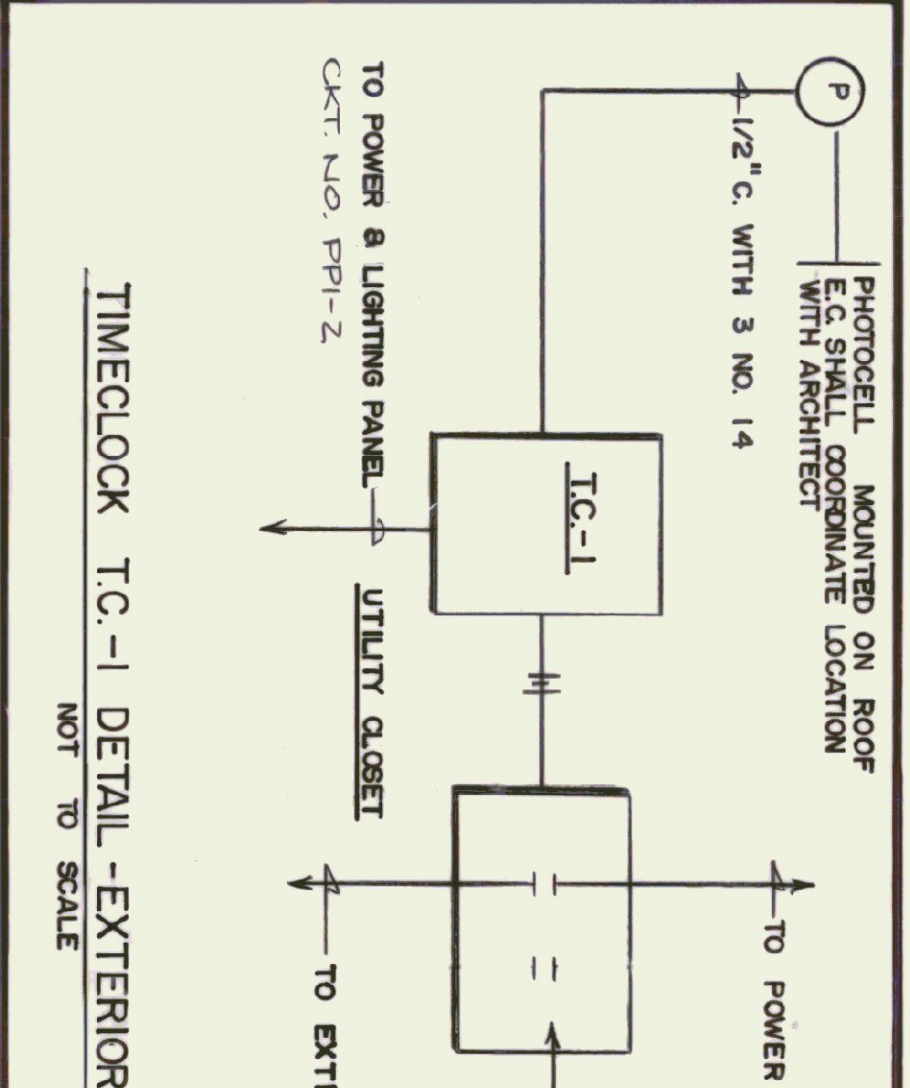
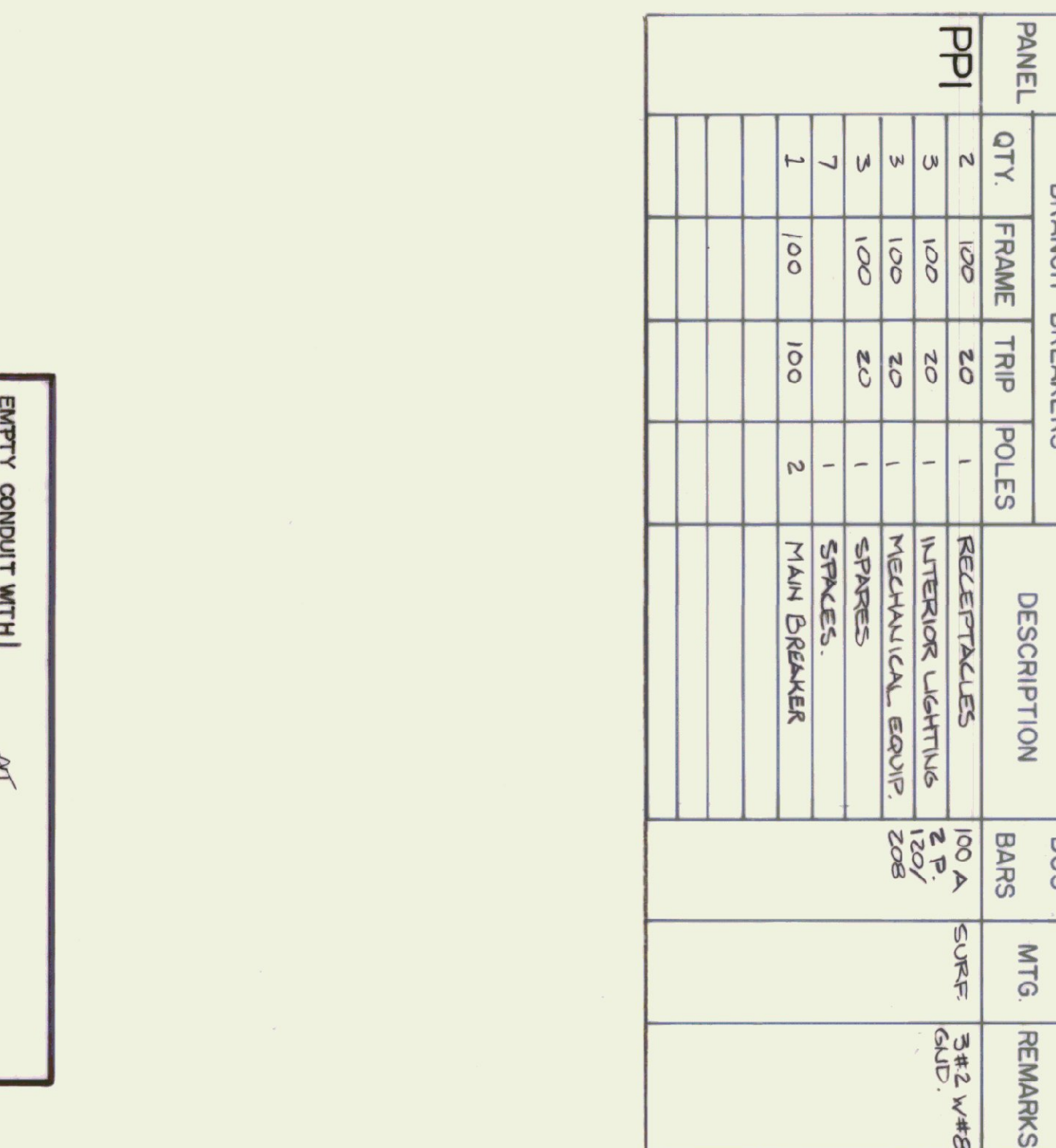
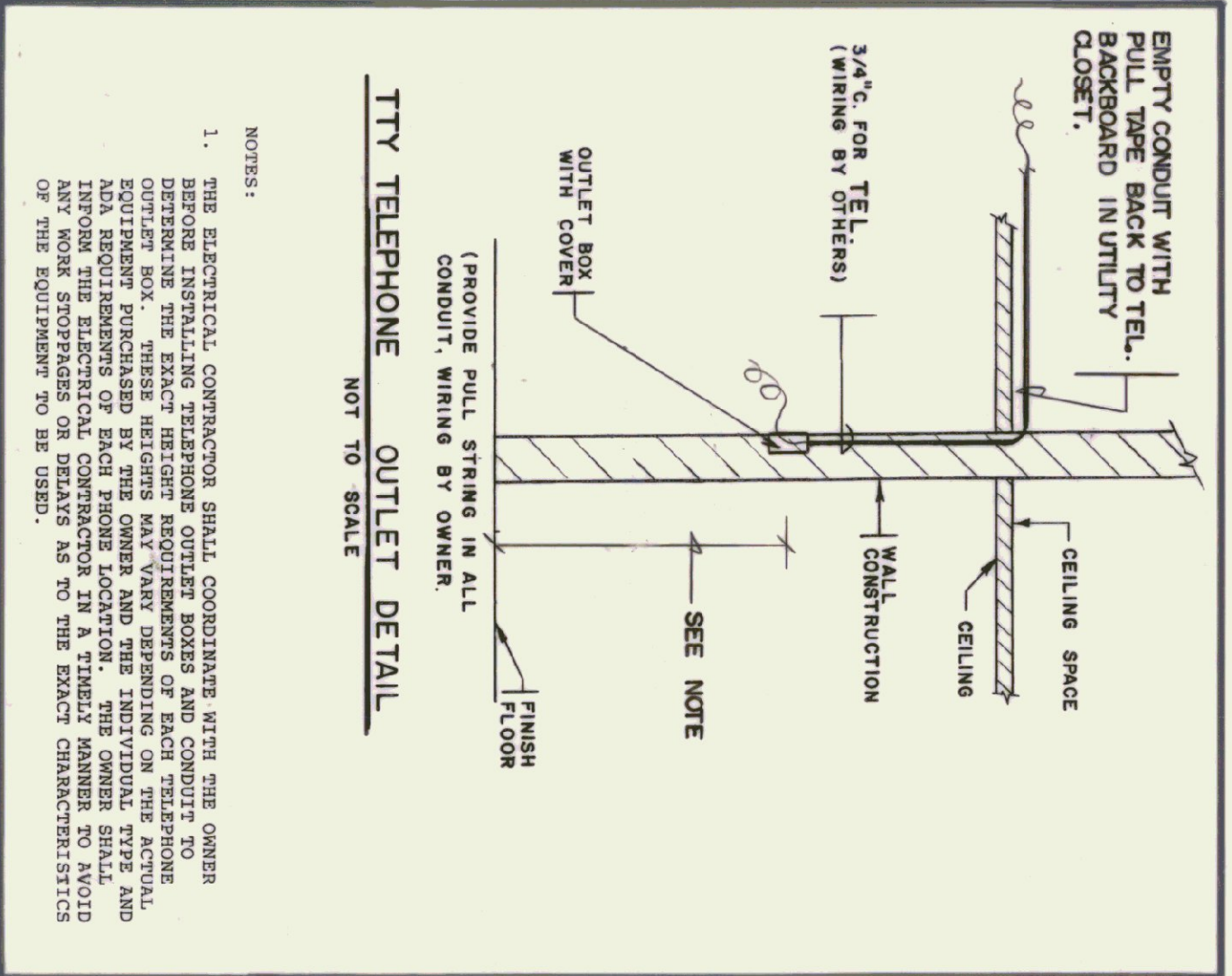
|   |   |   |
|---|---|---|
| ✓ | ① | JUNCTION BOX                            |
| ✓ | ② | SINGLE RECEPTACLE 18" A.F.F.            |
| ✓ | ③ | DUPLEX RECEPTACLE 18" A.F.F.            |
| ✓ | ④ | DUPLEX 6F1 RECEPTACLE 36" A.F.F.        |
| ✓ | ⑤ | TRACK LIGHT HEAD                        |
| ✓ | ⑥ | POWER PANEL                             |
| ✓ | ⑦ | FIRE-O-MATIC                            |
| ✓ | ⑧ | TELEPHONE OUTLET 18" A.F.F.             |
| ✓ | ⑨ | MOTOR STARTER                           |
| ✓ | ⑩ | DISCONNECT                              |
| ✓ | ⑪ | FIRE HORN & LIGHT                       |
| ✓ | ⑫ | TRANSFORMER                             |
| ✓ | ⑬ | HOME RUN TO PANEL P (MIN. 3/4" CONDUIT) |
| ✓ | ⑭ | CONDUIT TURNING UP                      |
| ✓ | ⑮ | CONDUIT TURNING UP                      |
| ✓ | ⑯ | EXIT LIGHT                              |
| ✓ | ⑰ | FLUORESCENT LIGHT                       |
| ✓ | ⑱ | BATTERY POWERED EMERGENCY LIGHT         |
| ✓ | ⑲ | POINT OF ELEC. CONNECTION TO [E]        |
| ✓ | ⑳ | NEW                                     |
| ✓ | ㉑ | EXISTING                                |
| ✓ | ㉒ | SINGLE POLE SWITCH 48" A.F.F.           |
| ✓ | ㉓ | THREE-WAY SWITCH 48" A.F.F.             |
| ✓ | ㉔ | A.B.F.                                  |
| ✓ | ㉕ | A.B.F.                                  |
| ✓ | ㉖ | A.B.F.                                  |
| ✓ | ㉗ | INCANDESCENT CEILING LIGHT              |
| ✓ | ㉘ | NIGHT LIGHT                             |
| ✓ | ㉙ | DUPLEX RECEPTACLE IN FLOOR              |
| ✓ | ㉚ | CLOCK OUTLET 7'-0" A.F.F.               |
| ✓ | ㉛ | SM - MOTOR THERMAL SWITCH               |
| ✓ | ㉜ | A.H.U.                                  |
| ✓ | ㉝ | TTY TELEPHONE OUTLET                    |
| ✓ | ㉞ | COMPUTER OUTLET 18" A.F.F.              |

**LIGHTING FIXTURE SCHEDULE**

| TYPE | MANUFACTURER DESCRIPTION  | LAMPS              | MOUNTING                                  | FINISH                     | REMARKS                                   |
|------|---|--------------------|---|----------------------------|---|
| A    | DAY-LITE WANDL PROOF NO. VFR-540-VR PROVIDE MOUNTING STEMS OR AIRRAIL CABLE | 2-32 F-32 T-8 R.S. | SUSPENDED TOP FIXTURES 9'-0" AFF. MINIMUM | WHITE                      | PROVIDE TAMPERPROOF SCREWS                |
| B    | LOBBY PROGRESS NO. P5117-45   | 1-100 A-19         | SUSPENDED BOTTOM OF 4" AFF.               | GREEN SHADE POLISHED BRASS |   |
| C    | PORCH WALL LUMINAIRE PROGRESS NO. P5850-11                                  | 1-100 A-19         | WALL 7'-6" AFF.                           | BRASS                      | PROVIDE TAMPERPROOF SCREWS                |
| D    | TRACK LIGHTING PROGRESS NO. P6254-10  | 75 PAR6            | CEILING 8" WALL                           | BRASS                      | PROVIDE BRASS TRACKS (2) 8" 8 HEADS (1) 2 |
| E    | EXIT SIGN FALLSAFE NO. EXF-1-RW-120-EBP                                     | 2-9 9W P.L. BLAX   | SURFACE COORDINATE WITH ARCH              | WHITE WITH RED LETTERS     | INTERAL EMER. EXIT TRACK STAINLESS SCREWS |
| F    | CLOSET LIGHT FALLSAFE NO. FBO-14-120  | 2-7 7W P.L. BLAX   | WALL 7'-0" AFF.                           | OP/L WHITE                 |   |
| G    |   |                    |   |                            |   |
| H    |   |                    |   |                            |   |

**PANELBOARD SCHEDULE**

| PANEL | BRANCH BREAKERS | DESCRIPTION | BUS BARS          | MTG. | REMARKS      |
|-------|-----------------|-------------|-------------------|------|--------------|
| PPI   | 2               | 100 Z0      | 100 A 2 P 120/208 | SURF | 3#2 W#8 GUD. |
|       | 3               | 100 Z0      | 1                 |      |              |
|       | 3               | 100 Z0      | 1                 |      |              |
|       | 3               | 100 Z0      | 1                 |      |              |
|       | 7               | 100         | 1                 |      |              |
|       | 1               | 100         | 2                 |      | MAIN BREAKER |



**ELECTRICAL - FLOOR PLAN**  
SCALE: 1/4" = 1'-0"

NOTES:  
1. HVAC CONT. TO COORD. WITH ELEC. CONT. TO LOCATE RETURN PIPES CONDUIT PANEL BELOW  
2. ALL CONDUITS SHALL BE CONDUIT BUNDLED UNDER FLOOR SLAB ETC. WHERE NOT POSSIBLE, 1" SOLID LOG SOUTH WALL. CONDUIT SHALL BE PAINT PER ARCH. REQUIREMENTS.  
3. COORDINATE WITH LOCAL TELEPHONE CO.  
PHONE # 802-584-5911

STATE OF VERMONT  
SCALE: 1/4" = 1'-0"  
REGISTERED PROFESSIONAL ENGINEER  
No. 3448  
DATE: 3-16-76  
DRAWN BY: AS NOTED  
PROJECT NO.: NH028-1172S  
REVISIONS: 5-16-76  
DWG. NO.: E-1  
13 OF 21

STATE OF VERMONT  
DEPARTMENT OF STATE BUILDINGS  
AGENCY OF ADMINISTRATION  
VERMONT  
ALBURG WELCOME CENTER  
ALBURG