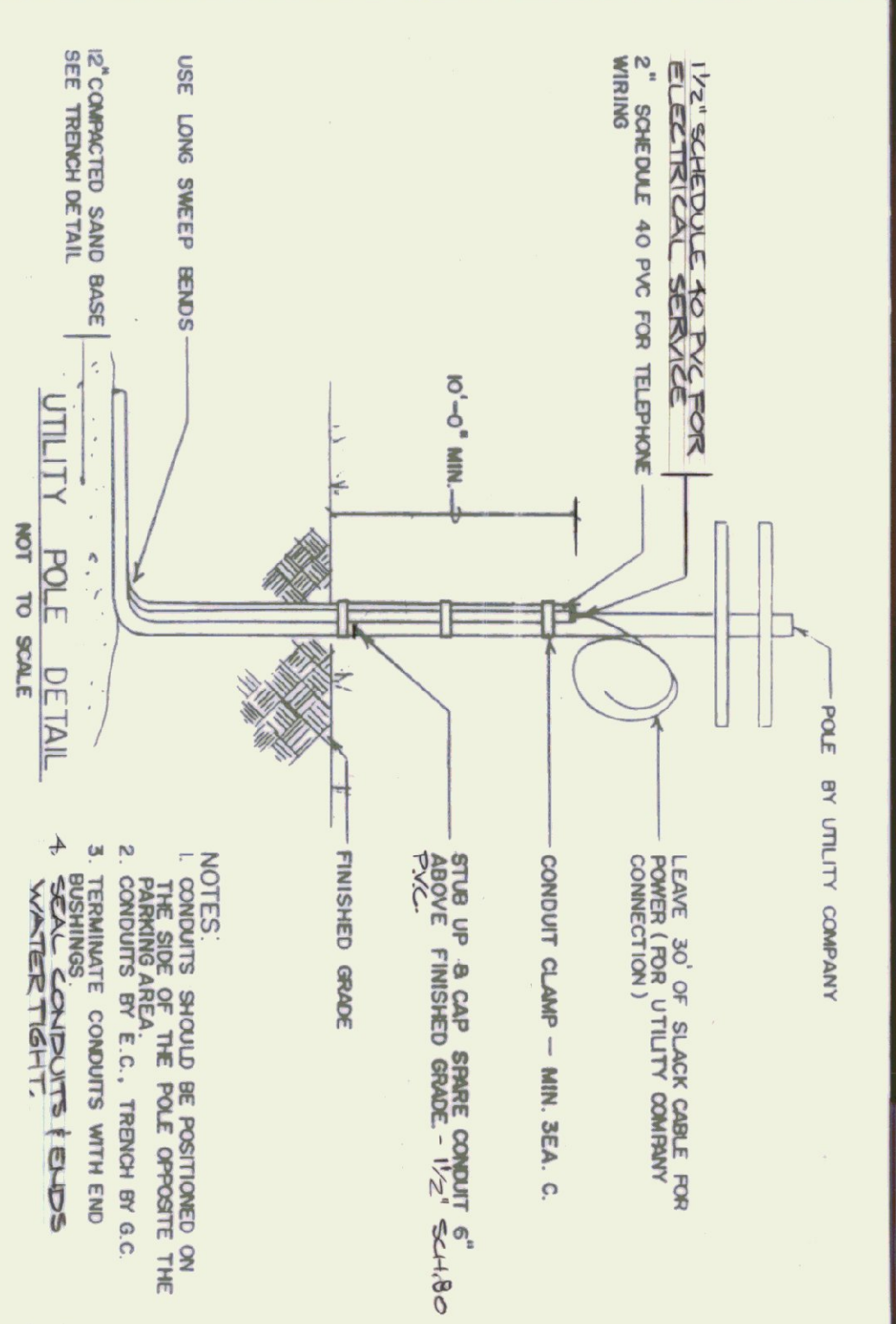
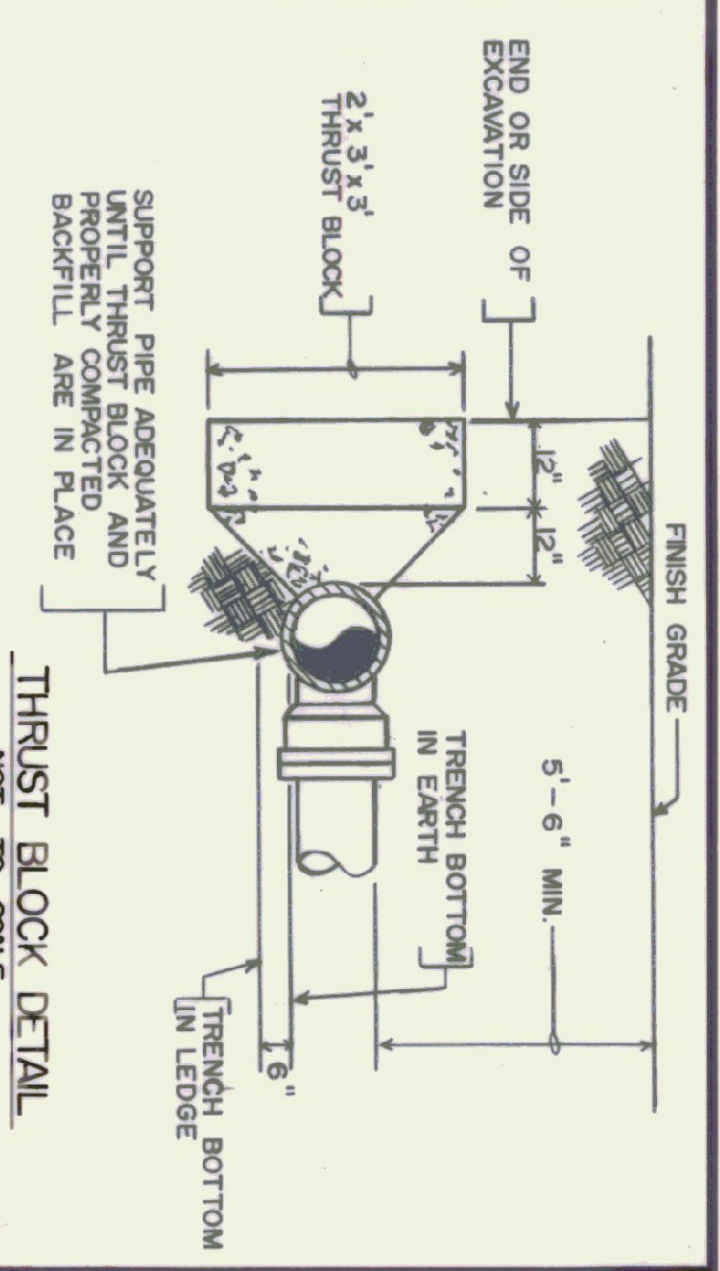
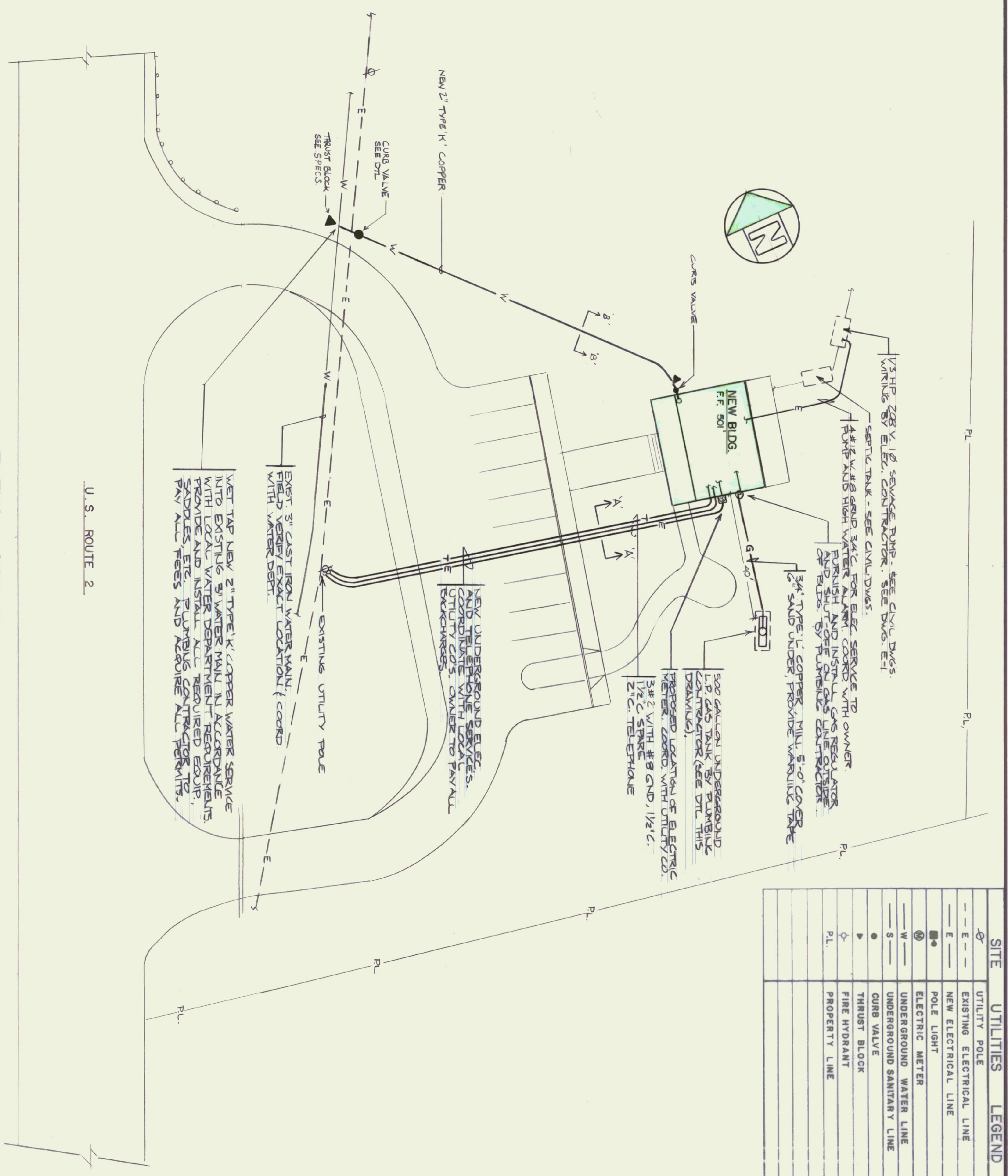
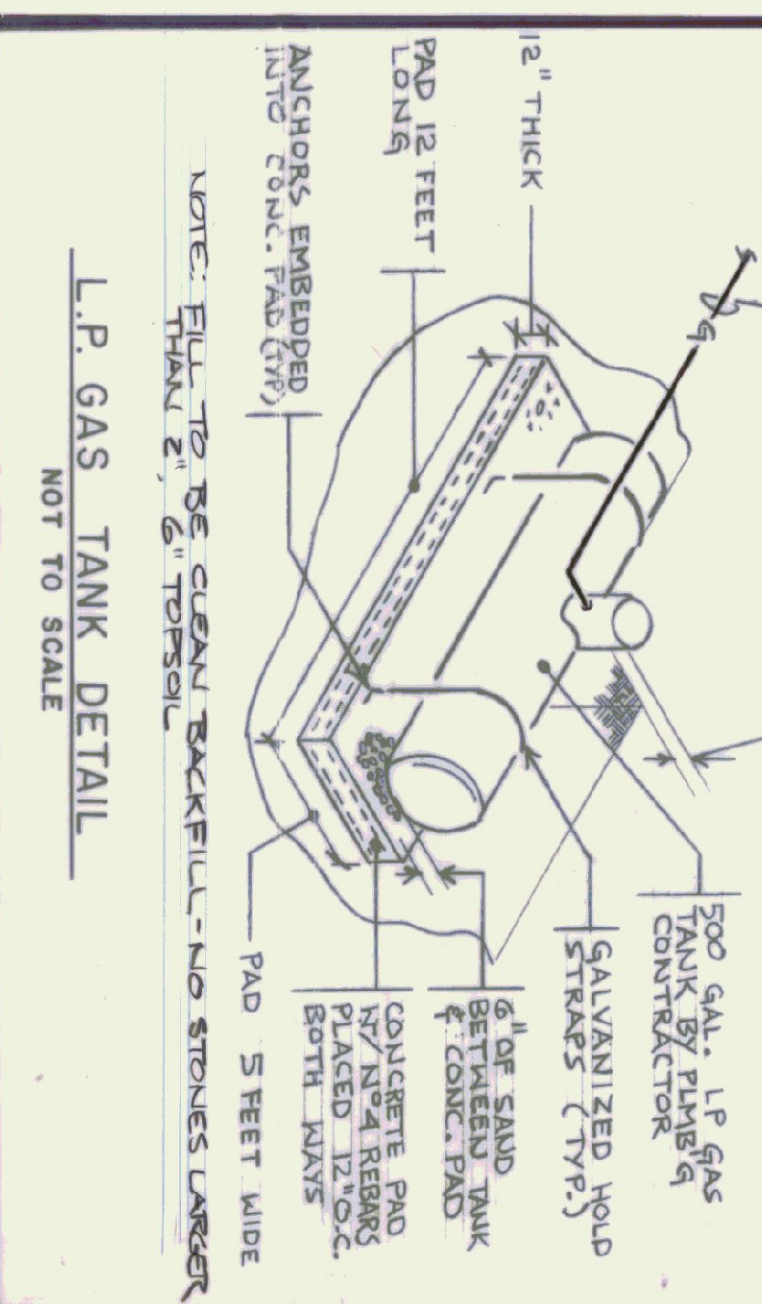
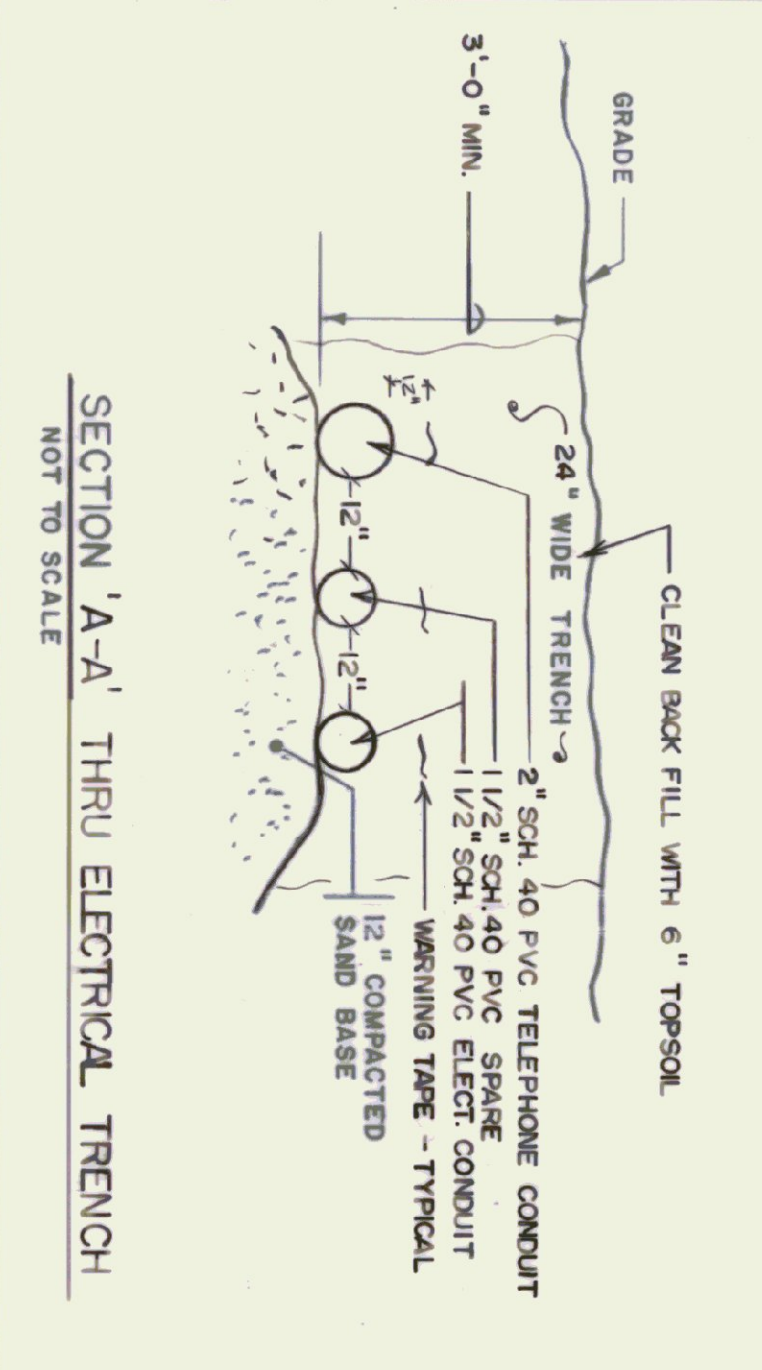
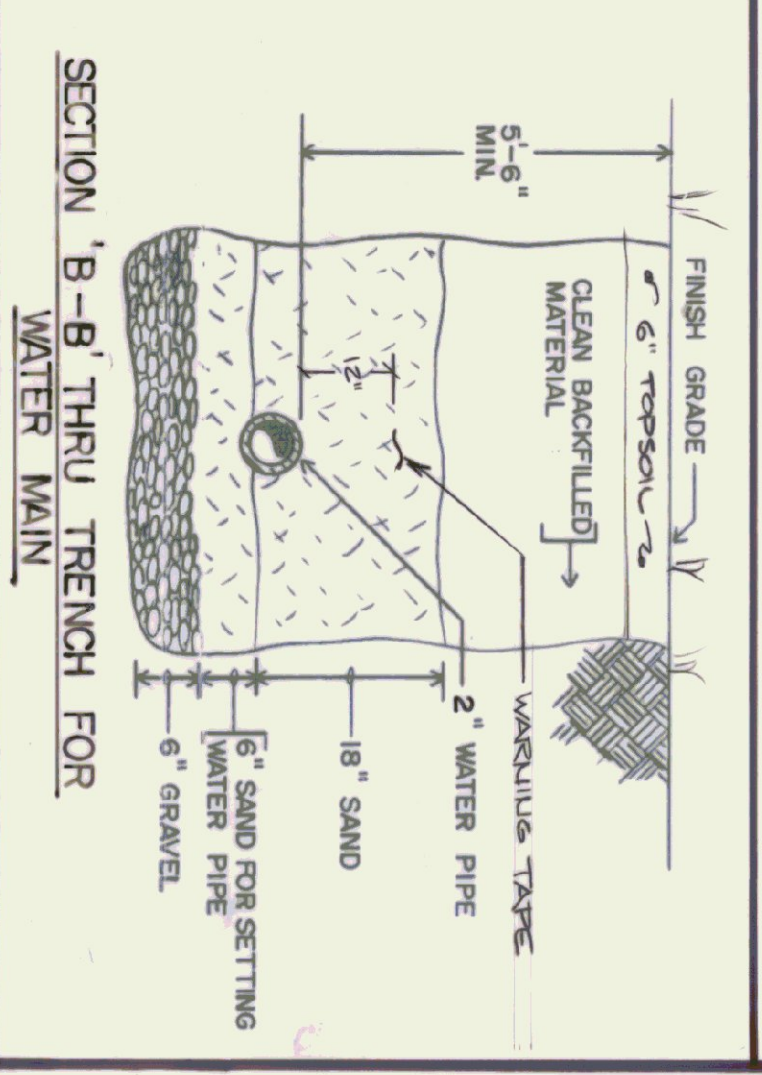


SITE UTILITIES LEGEND	
—○—	UTILITY POLE
—E—	EXISTING ELECTRICAL LINE
—E—	NEW ELECTRICAL LINE
—●—	POLE LIGHT
—○—	ELECTRIC METER
—W—	UNDERGROUND WATER LINE
—S—	UNDERGROUND SANITARY LINE
●	CURB VALVE
●	THRUST BLOCK
●	FIRE HYDRANT
PL	PROPERTY LINE



- NOTES:
1. CONDUITS SHOULD BE POSITIONED ON THE SIDE OF THE POLE OPPOSITE THE CONDUITS BY E.G., TRENCH BY G.C.
 2. TERMINATE CONDUITS WITH END WASHER TIGHTLY.
 3. SEAL CONDUITS & ENDS.
 4. WASH TRENCH.



UTILITIES - SITE PLAN
SCALE: 1" = 20'-0"



STATE OF VERMONT
DEPARTMENT OF STATE BUILDINGS
AGENCY OF ADMINISTRATION
VERMONT

ALBURG WELCOME CENTER
ALBURG
SITE UTILITIES - SITE PLAN, LEGENDS & DETAILS

DATE: 5-19-96	SCALE: AS NOTED	REVISIONS:	DWG. NO. U-1
DRAWN BY: GN	PROJECT NO. NH 028-1(17)S	5/19/96	10 OF 21