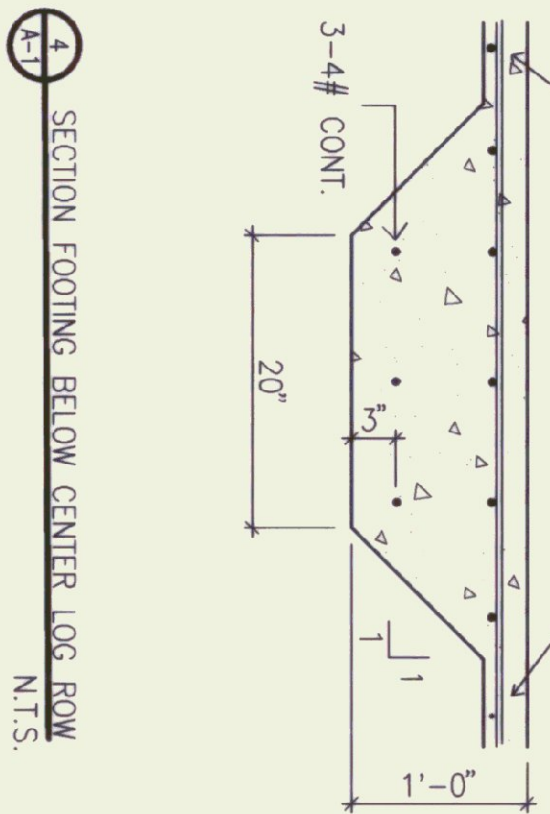
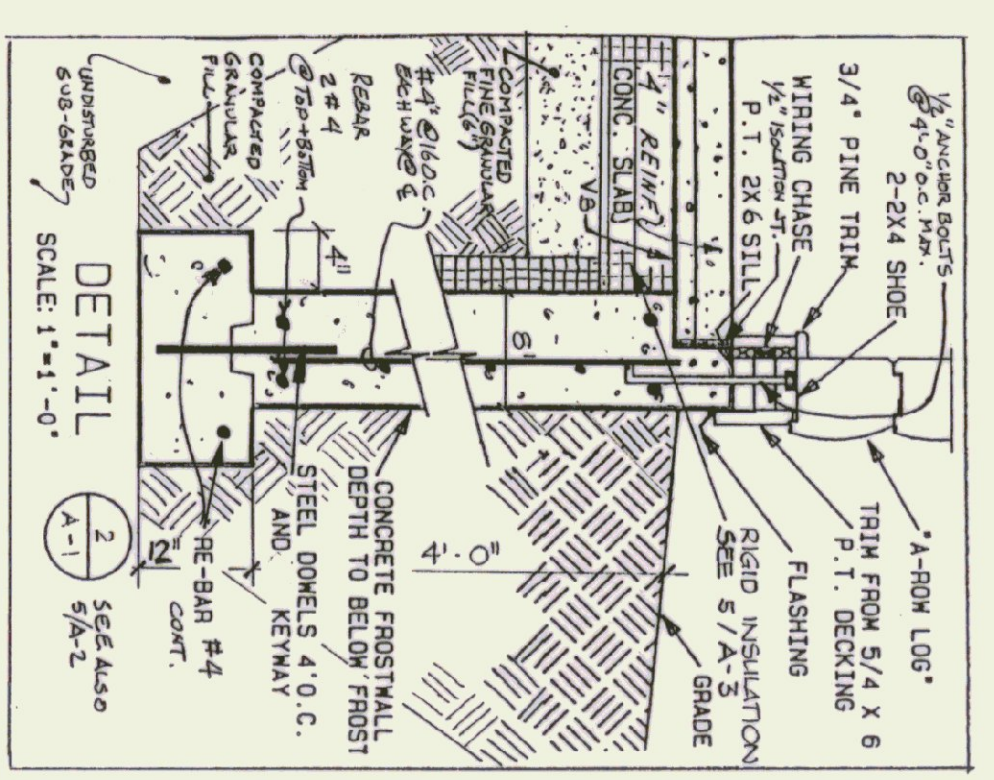
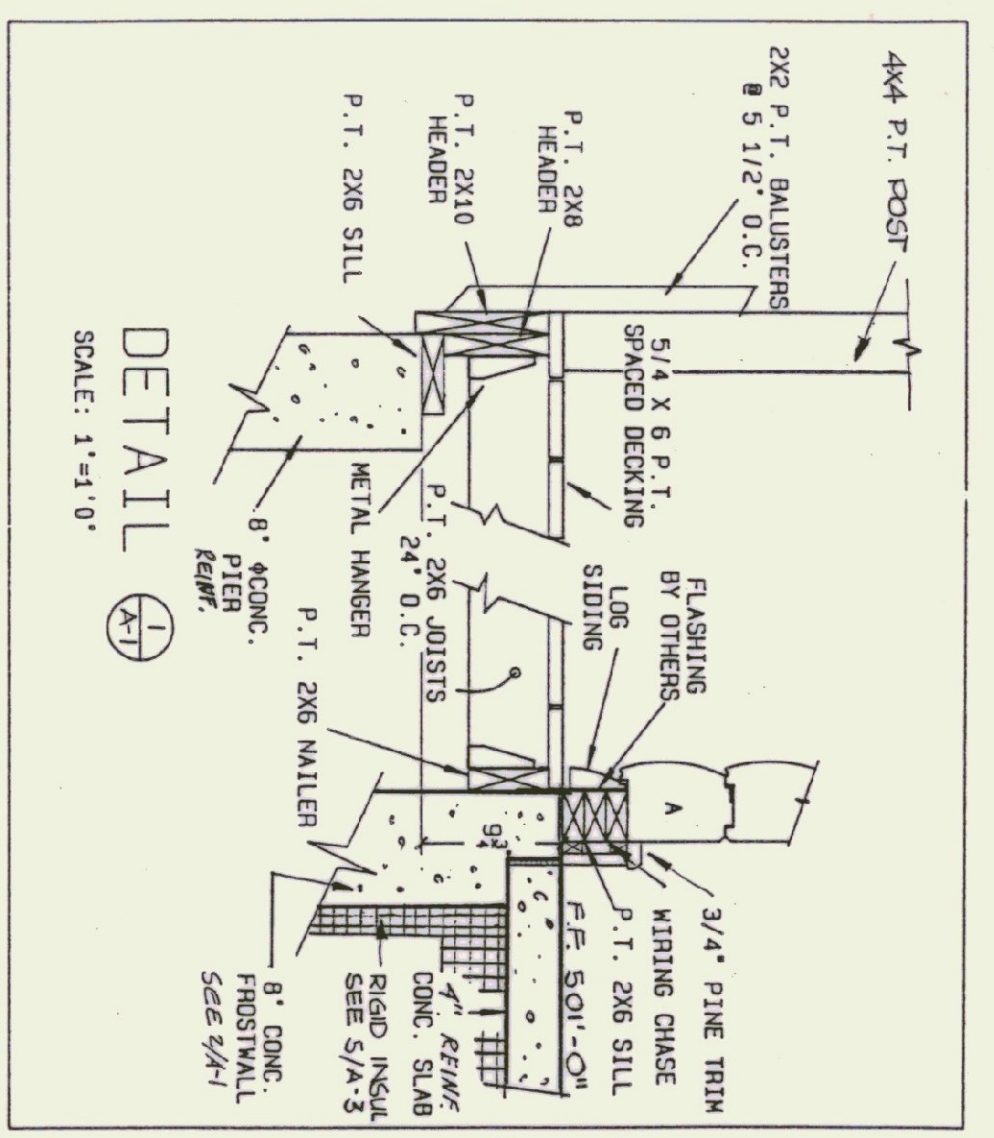


FOUNDATION PLAN



- CONCRETE REINFORCING NOTES:
1. REINFORCING STEEL ASTM 615 GRADE 60. DEFORMATION PER ASTM A305
 2. CONCRETE CLEAR COVER FOR REINFORCING:
 - A. BOTTOM OF FOOTINGS + SLABS ON GRADE: 3"
 - B. SIDES OF FOOTINGS + FACES OF FORMED WALLS: 2"

GENERAL NOTES:

SEE BOCA RESEARCH REPORT N.O. 89-27

NOTICE: BUILDING DESIGNED TO MEET THE FOLLOWING LOAD CONDITIONS:

1ST FLOOR: 40#/SF LIVE LOAD

ROOF SYSTEM: 50#/SF SNOW LOAD WIND LOAD: 70 MPH, EXPOSURE 'B'

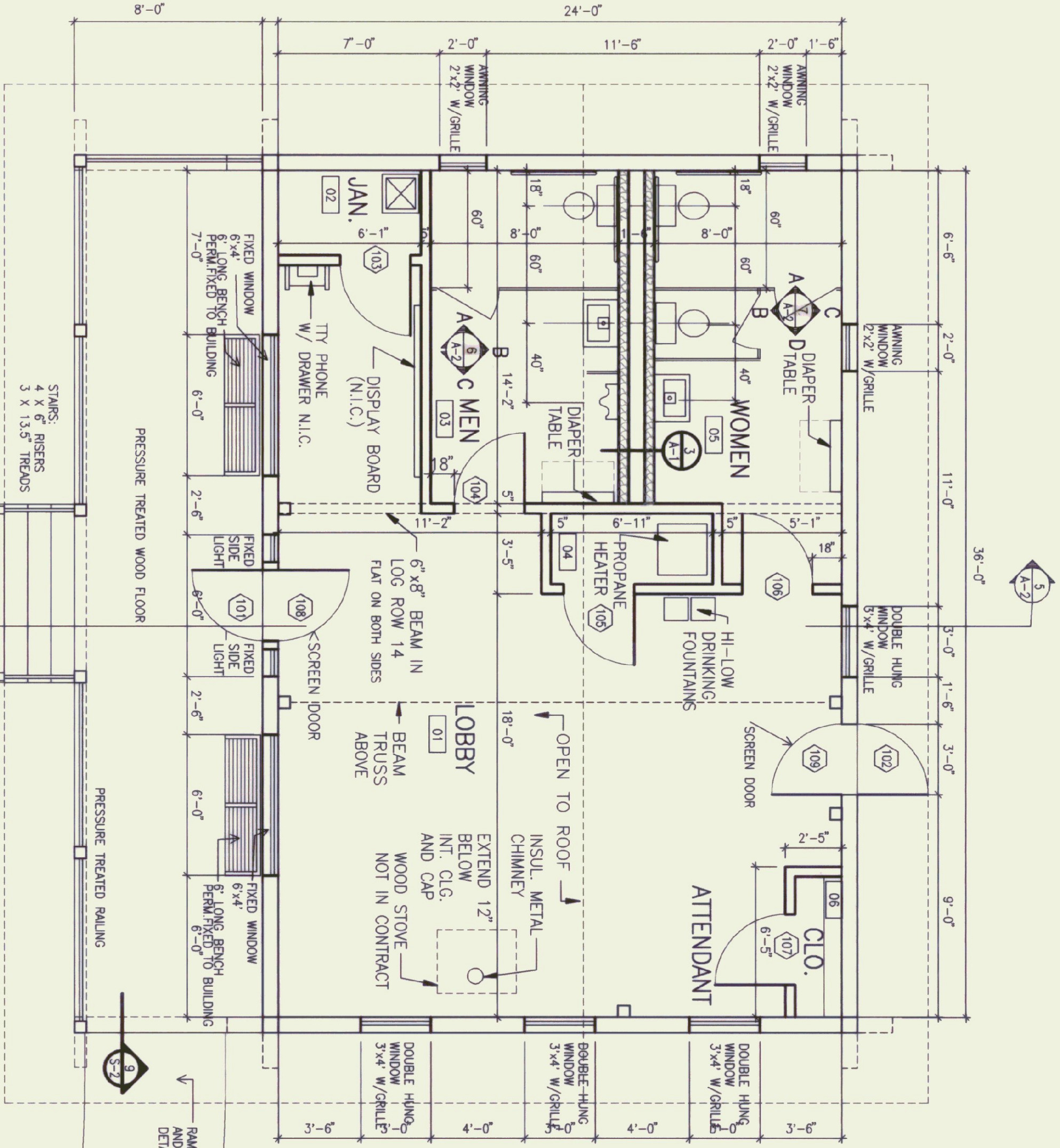
P.T. = PRESSURE TREATED

ALL DOORS ARE 6'8" HIGH UNLESS OTHERWISE NOTED.

LOW CLEARANCE THRESHOLD REQUIRED AT ALL DOORS.

ARTIFICIAL LIGHT AND MECHANICAL VENT REQUIRED IN RESTROOMS.

ALL INTERIOR WALLS ARE 5" LOG WALLS TYPICAL EXCEPT PLUMBING CHASE WALLS IN ROOM 03 AND 05.



FLOOR PLAN

DOOR #	DOOR TYPE	W	H	MAT	HEAD	LABS	BHMA	REMARKS
101	A	WD	30"	68"	WD	---	F12	"Per mfr.'s details"
102	A	WD	30"	68"	WD	---	F12	"Per mfr.'s details"
103	B	WD	30"	68"	WD	---	R88	"Per mfr.'s details"
104	B	WD	30"	68"	WD	---	R88	"Per mfr.'s details"
105	B	WD	30"	68"	WD	---	R88	"Per mfr.'s details"
106	B	WD	30"	68"	WD	---	R88	"Per mfr.'s details"
107	B	WD	30"	68"	WD	---	R88	"Per mfr.'s details"
108	C	WD	30"	68"	WD	---	---	"Per mfr.'s details"
109	C	WD	30"	68"	WD	---	---	"Per mfr.'s details"

DOOR TYPES

TYPE A: EXTERIOR DOORS, MORGAN M-7864-99 ENERGY SAVER (FRONT DOOR ONLY WITH SIDELIGHTS)

TYPE B: WOOD SCREEN DOOR, PRE-HUNG.

TYPE C: WOOD SCREEN DOOR, PRE-HUNG.

NOTES:

1. All doors to be 1/2" thick pre-hung, complete with hinges and locksets, doors stops + mop plates.
2. All doors to be BHMAs, except for the screen doors which are to be pre-hung.
3. All locks to be BHMAs, except for the screen doors which are to be pre-hung.
4. BHMA = Builders Hardware Manufacturers Association (ANSI reference numbers similar)



RM #	RM NAME	FLOOR		BASE		WALLS		CEILING		WOOD TRIM		REMARKS
		MAT	COLOR	MAT	COLOR	MAT	FIN.	MAT	FIN.	MAT	FIN.	
01	LOBBY	MAT	K-1	WD	ST-1	WD	ST-1	WD	ST-1	WD	ST-1	"SEE ROOM FINISH NOTES"
02	JAN	MAT	K-1	WD	ST-1	WD	ST-1	WD	ST-1	WD	ST-1	"SEE ROOM FINISH NOTES"
03	MEN	MAT	K-1	WD	ST-1	WD	ST-1	WD	ST-1	WD	ST-1	"SEE ROOM FINISH NOTES"
04	WOMEN	MAT	K-1	WD	ST-1	WD	ST-1	WD	ST-1	WD	ST-1	"SEE ROOM FINISH NOTES"
05	ATTENDANT	MAT	K-1	WD	ST-1	WD	ST-1	WD	ST-1	WD	ST-1	"SEE ROOM FINISH NOTES"
06	CLO	MAT	K-1	WD	ST-1	WD	ST-1	WD	ST-1	WD	ST-1	"SEE ROOM FINISH NOTES"
07	LOBBY	MAT	K-1	WD	ST-1	WD	ST-1	WD	ST-1	WD	ST-1	"SEE ROOM FINISH NOTES"
08	JAN	MAT	K-1	WD	ST-1	WD	ST-1	WD	ST-1	WD	ST-1	"SEE ROOM FINISH NOTES"
09	MEN	MAT	K-1	WD	ST-1	WD	ST-1	WD	ST-1	WD	ST-1	"SEE ROOM FINISH NOTES"
10	WOMEN	MAT	K-1	WD	ST-1	WD	ST-1	WD	ST-1	WD	ST-1	"SEE ROOM FINISH NOTES"

STATE OF VERMONT
DEPARTMENT OF STATE BUILDINGS
AGENCY OF ADMINISTRATION
MONTPELIER, VERMONT

ALBURG WELCOME CENTER
ALBURG
FOUNDATION/ FLOOR PLAN

DATE: MARCH 18, 1998
SCALE: 1/4"=1'-0"
REVISIONS: 5-14-10
DRAWING NO: A-1
SHEET 7 OF 21