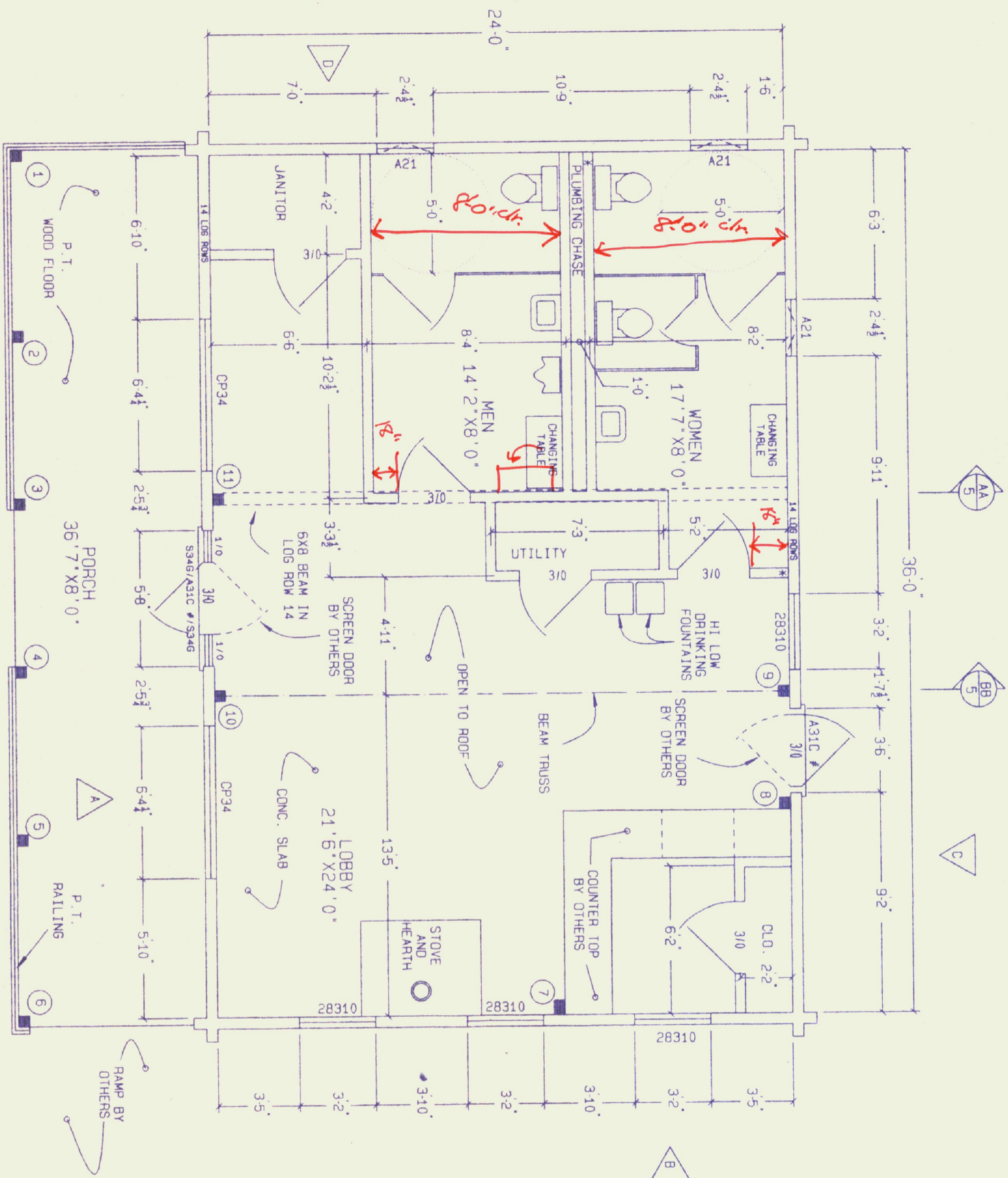


CODE	DATE	BY
S	3	SM
R1F	3	SM
R2	1	JA
R3	2	SM
R4	1	SM



FLOOR PLAN

GENERAL NOTES:

NOTICE: BUILDING DESIGNED TO MEET THE FOLLOWING LOAD CONDITIONS:  
 1st FLOOR: 40 PSF LIVE LOAD  
 ROOF SYSTEM: 50 PSF SNOW LOAD  
 WIND LOAD: 70 MPH EXPOSURE 'B'

\* = PARTITIONS THAT REQUIRE 2-2X8 WALL PLASTER PER DETAIL 8 ON SHT. B

P.T. = PRESSURE TREATED

ALL DOORS ARE 6'-8" HIGH UNLESS OTHERWISE NOTED.

# = DOOR WITH PANIC/SELF-CLOSING/ADA LOCKSET & LOW CLEARANCE THRESHOLD.

ARTIFICIAL LIGHT AND MECHANICAL VENT REQUIRED IN RESTROOMS.

⊙ A = DETAIL A ON SHEET 2

△ B = ELEVATION DESIGNATION

① = POST & BEAM IDENTIFICATION #

⊙ AA 5 = SECTION AA ON SHEET 5

NOTE: LAYOUT AND CONCEALMENT OF PLUMBING, HEATING, ELECTRICAL, AND AIR CONDITIONING LINES SHOULD BE PLANNED WITH QUALIFIED TRADES PEOPLE BEFORE STARTING CONSTRUCTION.

ALL PARTITIONS TO ROOF.



D-96R

© 1995 by NLH Inc.

NO.	REVISION	DATE	BY	CHK.
1	MISC.	5-1	SM	SM
2	NAME CHANGE	9-6	SM	SM
3	MISC.	9-17	SM	SM
4	MISC. WINDOW CHANGES	9-20	SM	SM

WINDS: ANDERSEN HIGH PERFORMANCE  
 MODEL: MOD. EAGLES NEST

DESIGNED TO MEET THE B.O.C.A. NATIONAL BUILDING CODE

NECCO INC. / ALBURG WELCOME CENTER

SCALE 1/4" = 1'-0" NE-15923 SH. NO. 1

