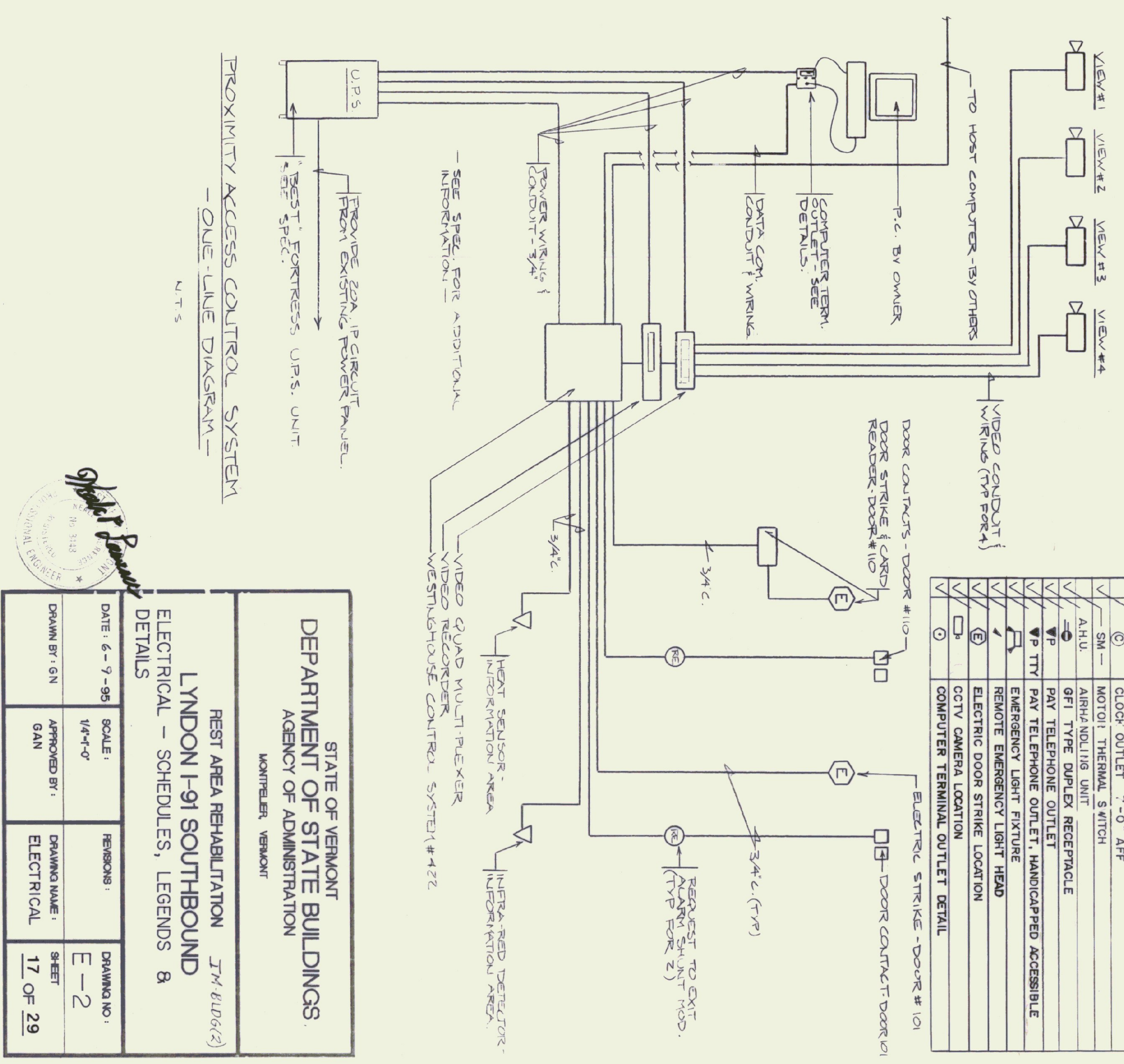


LIGHTING FIXTURE SCHEDULE						
TYPE	MANUFACTURER & DESCRIPTION	LAMPS	MOUNTING	FINISH	REMARKS	
A	LOBBY NEWSTAR VANDALPROOF NO. 54-142	2-32 F-32 T-8 RS	SURFACE	WHITE	PROVIDE TAMPERPROOF SCREWS	
B	HANDICAPPED TOILET ROOM NEWSTAR VANDALPROOF CORNER NO. 54-142/45	2-32 F-32 T-8 RS	SURFACE / CORNER MNT	WHITE	PROVIDE TAMPERPROOF SCREWS	
C	PORTICO / CANOPY FLOOR MOUNTED NO. 54-142/45	1-100 M90 MED	RECESSED	COORDINATE WITH ARCH.	PROVIDE TAMPERPROOF SCREWS	
D	POLE MOUNTED LIGHT KASI-250W-R4-120-SP12 LITONIA TEK NO. 54-142/45	1-250 M90	POLE	COORDINATE WITH ARCH.	PROVIDE TAMPERPROOF SCREWS	
E	EXIT SIGN FALLSAFE NO. EXF-1-RW-120-EP9	2-9 9W PL BLX	SURFACE COORDINATE WITH ARCH.	WHITE WITH RED LETTERS	INTERNAL EMERGENCY TAMPERPROOF SCREWS	
F	CLOSET LIGHT FALLSAFE NO. FB0-14-120	2-7 7W BL-AV	WALL	ORNL/WHITE	PROVIDE LOW TEMP (-20°) SIGN TYPE LAMPS AND BALLASTS	
G	DAYBRITE 4' STRIP T148HD-LT20	60W ROOM TEMP	SEE ARCH DETAILS	WHITE		



STATE OF VERMONT  
DEPARTMENT OF STATE BUILDINGS  
AGENCY OF ADMINISTRATION  
MONTPELIER, VERMONT

REST AREA REHABILITATION JM 4106(2)  
LYNDON I-91 SOUTHBOUND  
ELECTRICAL - SCHEDULES, LEGENDS & DETAILS

DATE: 6-9-95 SCALE: 1/4"=0'  
DRAWN BY: GN APPROVED BY: GAN  
DRAWING NAME: ELECTRICAL SHEET 17 OF 29

ELECTRICAL LEGEND	
⊕	JUNCTION BOX
⊖	SINGLE RECEPTACLE 15" A.F.F.
⊕ ⊖	DUPLEX RECEPTACLE 18" A.F.F.
⊕ ⊖ ⊕	QUAD RECEPTACLE 18" A.F.F.
⊕ ⊖ ⊕ ⊖	SPECIAL RECEPTACLE RATING ADJACENT
⊕ ⊖ ⊕ ⊖ ⊕	POWER PANEL
⊕ ⊖ ⊕ ⊖ ⊕ ⊖	FIRE-O-RATE
⊕ ⊖ ⊕ ⊖ ⊕ ⊖ ⊕	TELEPHONE OUTLET
⊕ ⊖ ⊕ ⊖ ⊕ ⊖ ⊕ ⊖	MOTOR STARTER
⊕ ⊖ ⊕ ⊖ ⊕ ⊖ ⊕ ⊖ ⊕	DISCONNECT
⊕ ⊖ ⊕ ⊖ ⊕ ⊖ ⊕ ⊖ ⊕ ⊖	FIRE HORN & LIGHT
⊕ ⊖ ⊕ ⊖ ⊕ ⊖ ⊕ ⊖ ⊕ ⊖ ⊕	TRANSFORMER
⊕ ⊖ ⊕ ⊖ ⊕ ⊖ ⊕ ⊖ ⊕ ⊖ ⊕ ⊖	HOME RUN TO PANEL P (MIN. 3/4" CONDUIT)
⊕ ⊖ ⊕ ⊖ ⊕ ⊖ ⊕ ⊖ ⊕ ⊖ ⊕ ⊖ ⊕	CONDUIT TURNING UP
⊕ ⊖ ⊕ ⊖ ⊕ ⊖ ⊕ ⊖ ⊕ ⊖ ⊕ ⊖ ⊕ ⊖	CONDUIT TURNER UP
⊕ ⊖ ⊕ ⊖ ⊕ ⊖ ⊕ ⊖ ⊕ ⊖ ⊕ ⊖ ⊕ ⊖ ⊕	EXIT LIGHT
⊕ ⊖ ⊕ ⊖ ⊕ ⊖ ⊕ ⊖ ⊕ ⊖ ⊕ ⊖ ⊕ ⊖ ⊕ ⊖	FLOURESCENT LIGHT
⊕ ⊖ ⊕ ⊖ ⊕ ⊖ ⊕ ⊖ ⊕ ⊖ ⊕ ⊖ ⊕ ⊖ ⊕ ⊖ ⊕	TO BE REMOVED
⊕ ⊖ ⊕ ⊖ ⊕ ⊖ ⊕ ⊖ ⊕ ⊖ ⊕ ⊖ ⊕ ⊖ ⊕ ⊖ ⊕ ⊖	POINT OF [N] ELEC. CONNECTION TO [E]
⊕ ⊖ ⊕ ⊖ ⊕ ⊖ ⊕ ⊖ ⊕ ⊖ ⊕ ⊖ ⊕ ⊖ ⊕ ⊖ ⊕ ⊖ ⊕	EXISTING
⊕ ⊖ ⊕ ⊖ ⊕ ⊖ ⊕ ⊖ ⊕ ⊖ ⊕ ⊖ ⊕ ⊖ ⊕ ⊖ ⊕ ⊖ ⊕ ⊖	NEW
⊕ ⊖ ⊕ ⊖ ⊕ ⊖ ⊕ ⊖ ⊕ ⊖ ⊕ ⊖ ⊕ ⊖ ⊕ ⊖ ⊕ ⊖ ⊕ ⊖ ⊕	SINGLE POLE SWITCH 48" A.F.F.
⊕ ⊖ ⊕ ⊖ ⊕ ⊖ ⊕ ⊖ ⊕ ⊖ ⊕ ⊖ ⊕ ⊖ ⊕ ⊖ ⊕ ⊖ ⊕ ⊖ ⊕ ⊖	THREE-WAY SWITCH 48" A.F.F.
⊕ ⊖ ⊕ ⊖ ⊕ ⊖ ⊕ ⊖ ⊕ ⊖ ⊕ ⊖ ⊕ ⊖ ⊕ ⊖ ⊕ ⊖ ⊕ ⊖ ⊕ ⊖ ⊕	ABOVE FINISHED FLOOR
⊕ ⊖ ⊕ ⊖ ⊕ ⊖ ⊕ ⊖ ⊕ ⊖ ⊕ ⊖ ⊕ ⊖ ⊕ ⊖ ⊕ ⊖ ⊕ ⊖ ⊕ ⊖ ⊕	A.F.C.
⊕ ⊖ ⊕ ⊖ ⊕ ⊖ ⊕ ⊖ ⊕ ⊖ ⊕ ⊖ ⊕ ⊖ ⊕ ⊖ ⊕ ⊖ ⊕ ⊖ ⊕ ⊖ ⊕	ABOVE FINISHED COUNTER
⊕ ⊖ ⊕ ⊖ ⊕ ⊖ ⊕ ⊖ ⊕ ⊖ ⊕ ⊖ ⊕ ⊖ ⊕ ⊖ ⊕ ⊖ ⊕ ⊖ ⊕ ⊖ ⊕	INCANDESCENT CEILING LIGHT
⊕ ⊖ ⊕ ⊖ ⊕ ⊖ ⊕ ⊖ ⊕ ⊖ ⊕ ⊖ ⊕ ⊖ ⊕ ⊖ ⊕ ⊖ ⊕ ⊖ ⊕ ⊖ ⊕	NIGHT LIGHT
⊕ ⊖ ⊕ ⊖ ⊕ ⊖ ⊕ ⊖ ⊕ ⊖ ⊕ ⊖ ⊕ ⊖ ⊕ ⊖ ⊕ ⊖ ⊕ ⊖ ⊕ ⊖ ⊕	DUPLEX RECEPTACLE IN FLOOR
⊕ ⊖ ⊕ ⊖ ⊕ ⊖ ⊕ ⊖ ⊕ ⊖ ⊕ ⊖ ⊕ ⊖ ⊕ ⊖ ⊕ ⊖ ⊕ ⊖ ⊕ ⊖ ⊕	CLOSE OUTLET 7'-0" AFF
⊕ ⊖ ⊕ ⊖ ⊕ ⊖ ⊕ ⊖ ⊕ ⊖ ⊕ ⊖ ⊕ ⊖ ⊕ ⊖ ⊕ ⊖ ⊕ ⊖ ⊕ ⊖ ⊕	MOTOR THERMAL SWITCH
⊕ ⊖ ⊕ ⊖ ⊕ ⊖ ⊕ ⊖ ⊕ ⊖ ⊕ ⊖ ⊕ ⊖ ⊕ ⊖ ⊕ ⊖ ⊕ ⊖ ⊕ ⊖ ⊕	A.H.U.
⊕ ⊖ ⊕ ⊖ ⊕ ⊖ ⊕ ⊖ ⊕ ⊖ ⊕ ⊖ ⊕ ⊖ ⊕ ⊖ ⊕ ⊖ ⊕ ⊖ ⊕ ⊖ ⊕	AIR HANDLING UNIT
⊕ ⊖ ⊕ ⊖ ⊕ ⊖ ⊕ ⊖ ⊕ ⊖ ⊕ ⊖ ⊕ ⊖ ⊕ ⊖ ⊕ ⊖ ⊕ ⊖ ⊕ ⊖ ⊕	GFI TYPE DUPLEX RECEPTACLE
⊕ ⊖ ⊕ ⊖ ⊕ ⊖ ⊕ ⊖ ⊕ ⊖ ⊕ ⊖ ⊕ ⊖ ⊕ ⊖ ⊕ ⊖ ⊕ ⊖ ⊕ ⊖ ⊕	PAY TELEPHONE OUTLET
⊕ ⊖ ⊕ ⊖ ⊕ ⊖ ⊕ ⊖ ⊕ ⊖ ⊕ ⊖ ⊕ ⊖ ⊕ ⊖ ⊕ ⊖ ⊕ ⊖ ⊕ ⊖ ⊕	EMERGENCY LIGHT FIXTURE
⊕ ⊖ ⊕ ⊖ ⊕ ⊖ ⊕ ⊖ ⊕ ⊖ ⊕ ⊖ ⊕ ⊖ ⊕ ⊖ ⊕ ⊖ ⊕ ⊖ ⊕ ⊖ ⊕	REMOTE EMERGENCY LIGHT HEAD
⊕ ⊖ ⊕ ⊖ ⊕ ⊖ ⊕ ⊖ ⊕ ⊖ ⊕ ⊖ ⊕ ⊖ ⊕ ⊖ ⊕ ⊖ ⊕ ⊖ ⊕ ⊖ ⊕	ELECTRIC DOOR STRIKE LOCATION
⊕ ⊖ ⊕ ⊖ ⊕ ⊖ ⊕ ⊖ ⊕ ⊖ ⊕ ⊖ ⊕ ⊖ ⊕ ⊖ ⊕ ⊖ ⊕ ⊖ ⊕ ⊖ ⊕	CCTV CAMERA LOCATION
⊕ ⊖ ⊕ ⊖ ⊕ ⊖ ⊕ ⊖ ⊕ ⊖ ⊕ ⊖ ⊕ ⊖ ⊕ ⊖ ⊕ ⊖ ⊕ ⊖ ⊕ ⊖ ⊕	COMPUTER TERMINAL OUTLET DETAIL