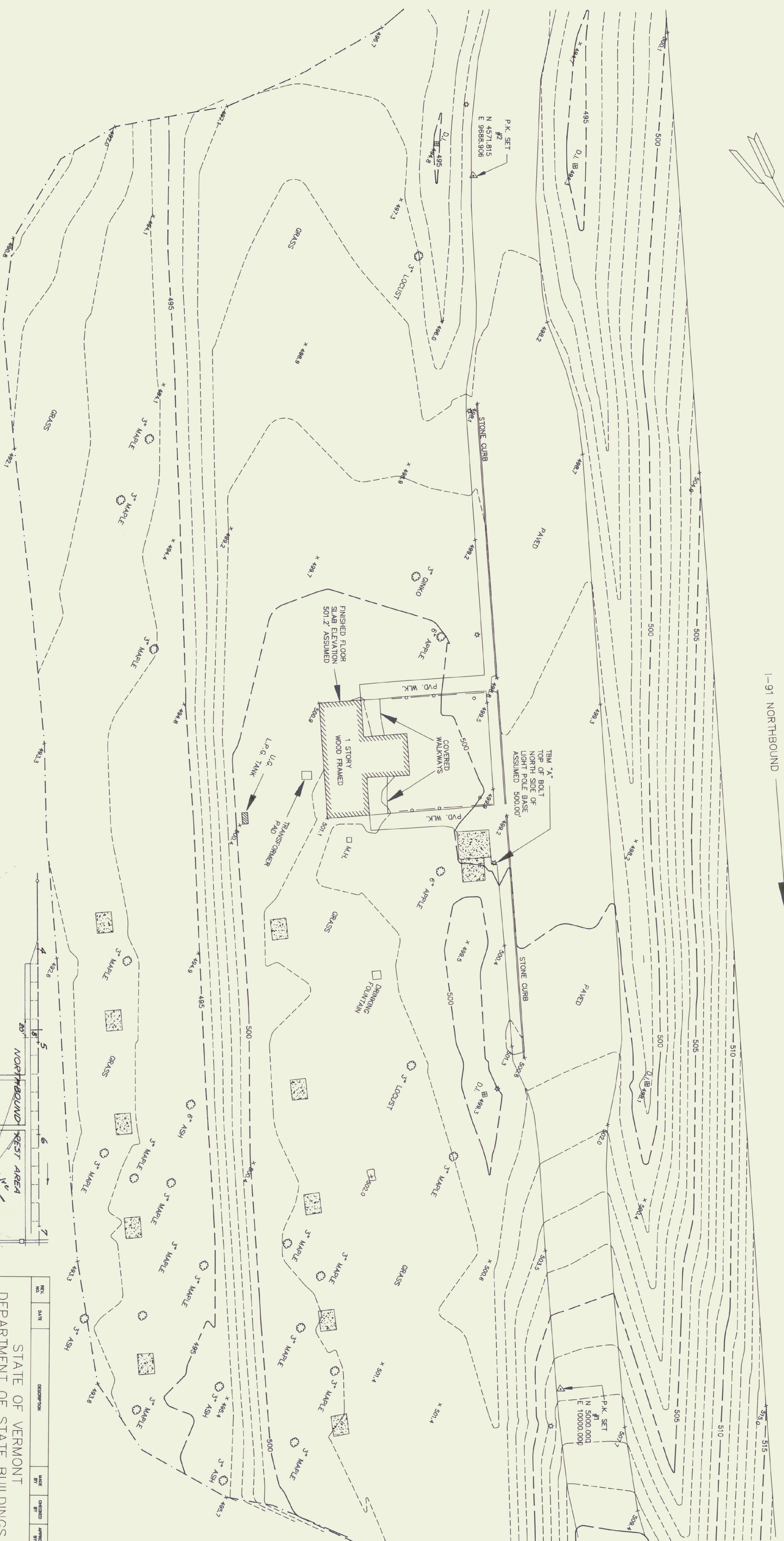
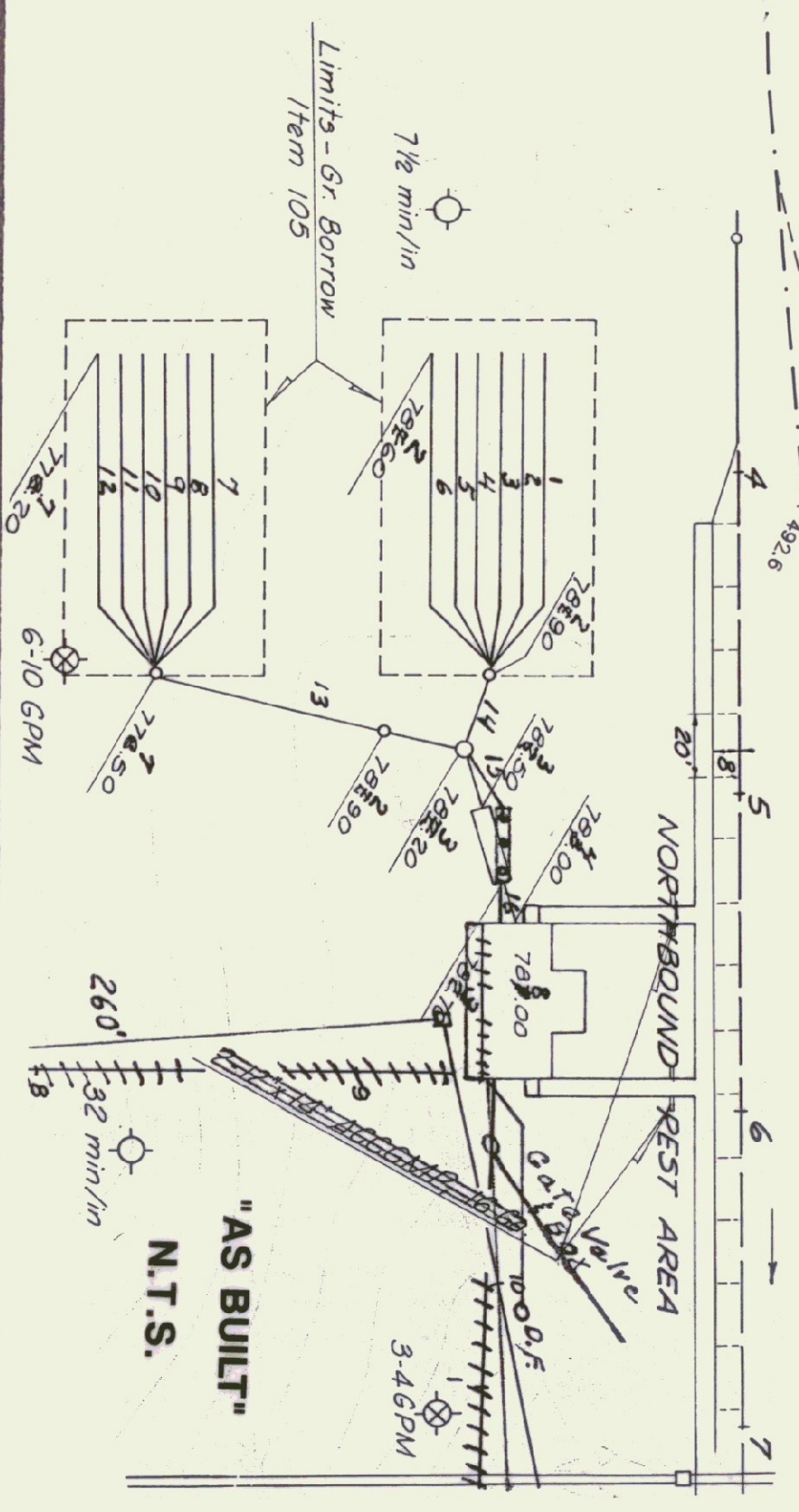


1-91 NORTHBOUND



LEGEND

- 5 FOOT CONTOUR
- 1 FOOT CONTOUR
- TOP BANK-LIMIT OF SURVEY
- CONCRETE SLAB
- DECIDUOUS TREE
- LIGHT POLE



REV. NO.	DATE	DESCRIPTION	MADE BY	CHECKED BY	APPROVED BY

STATE OF VERMONT
DEPARTMENT OF STATE BUILDINGS

TOPOGRAPHIC PLAN
1-91 NORTHBOUND REST AREA
BRADFORD, VERMONT

DATE	AUGUST 1993
SCALE	1" = 20'
PROJECT NO.	14793
DATE	AUGUST 1993
SCALE	20 OF 24