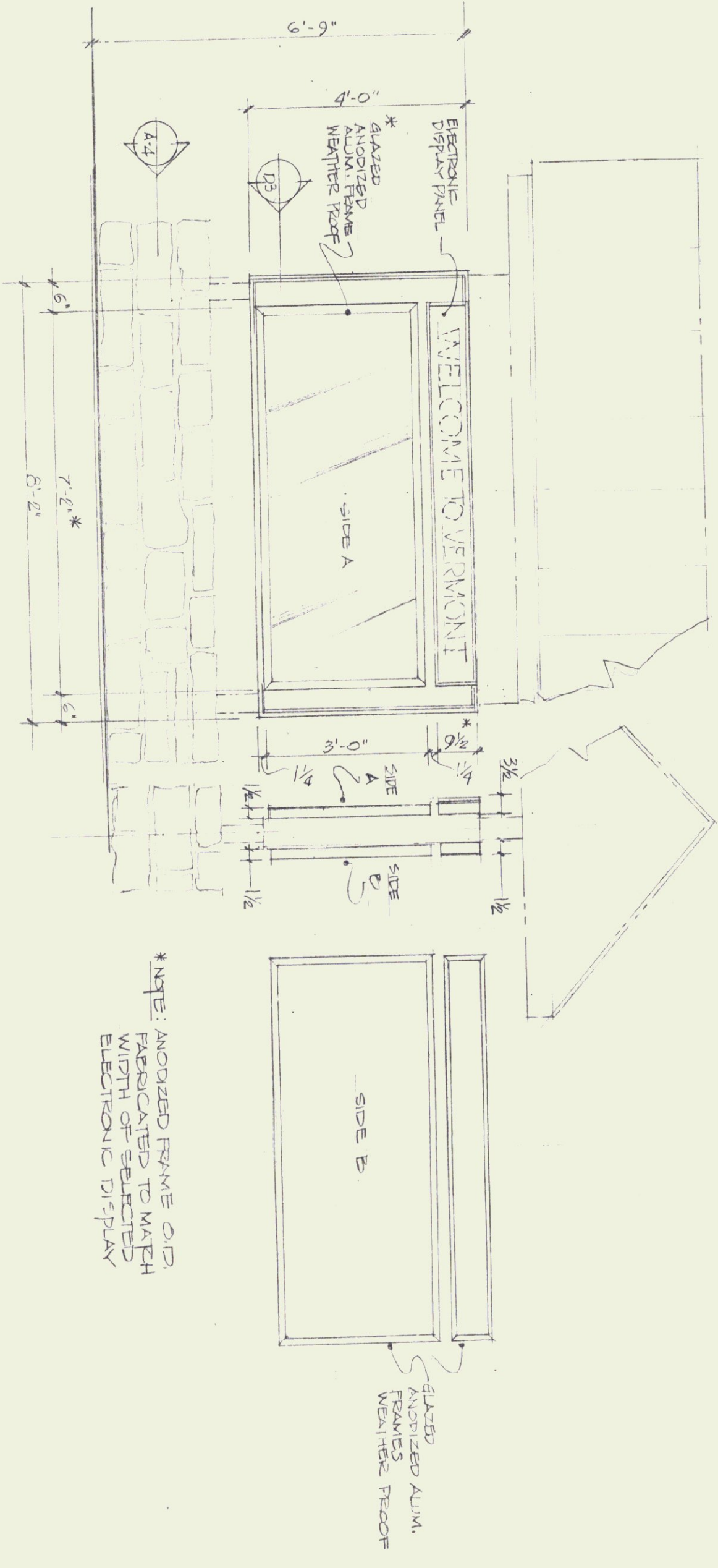
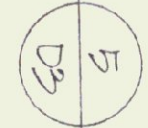


ELEVATION

PROCEDURE RACK (EAST ELEVATION)

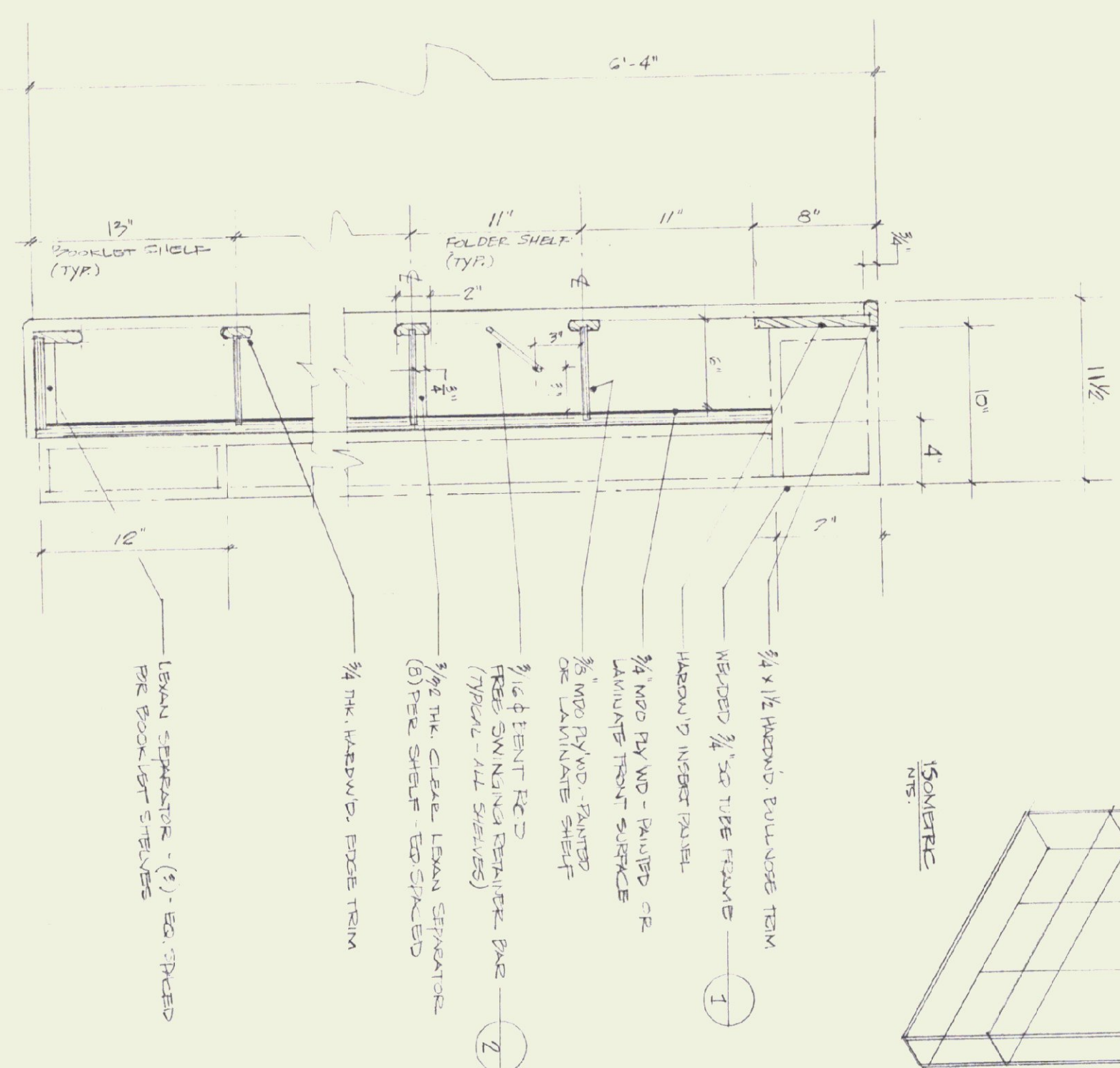
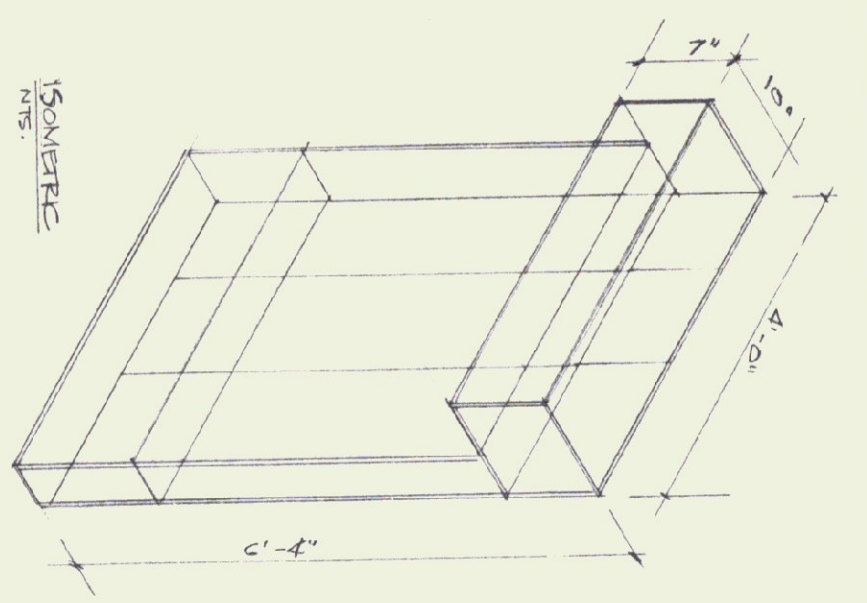


EXTERIOR KIOSK - DISPLAY FIXTURES

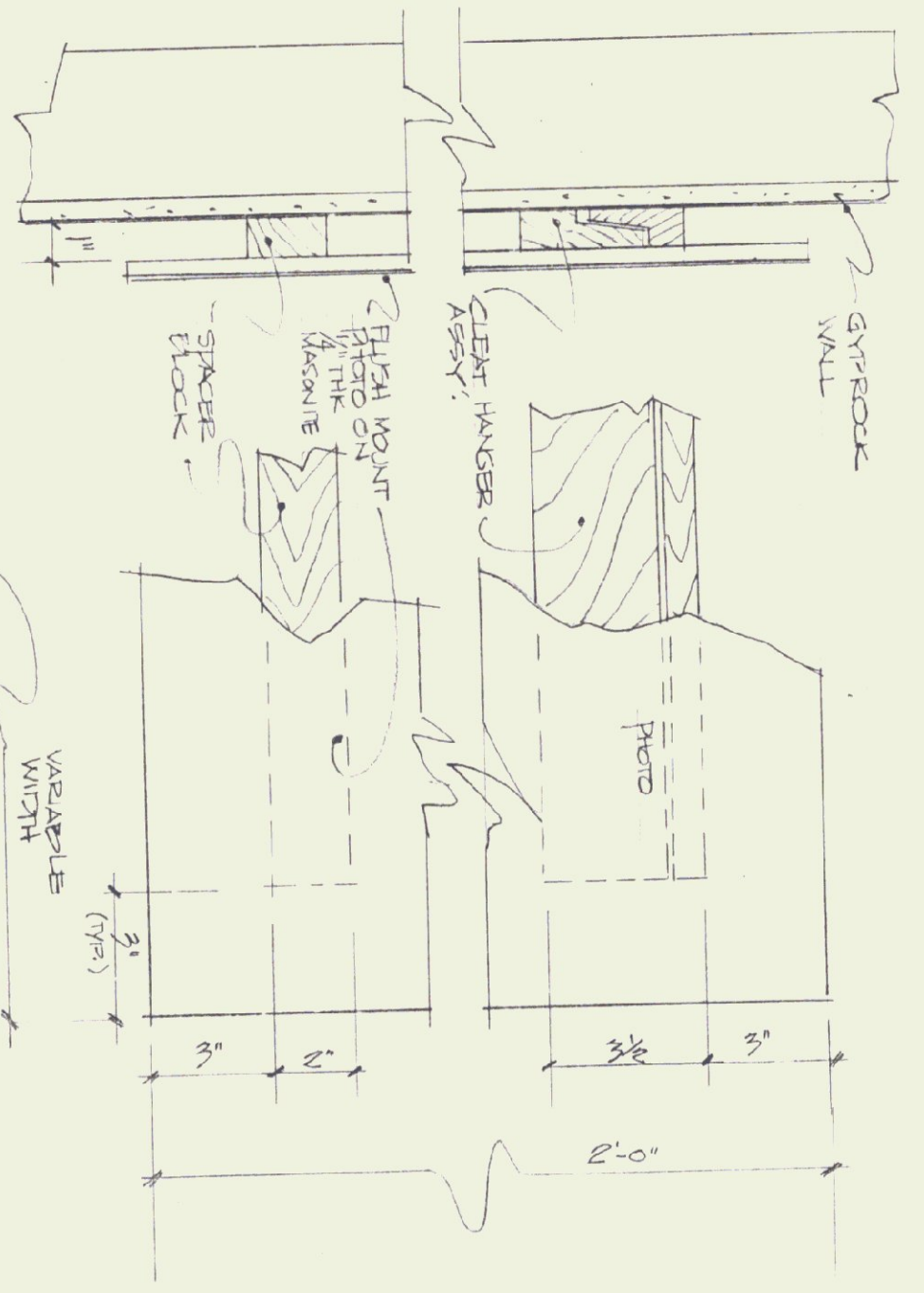


*NOTE: ANODIZED FRAME AND FABRICATED TO MATCH WIDTH OF EXISTING ELECTRONIC DISPLAY

*GLAZED ANODIZED ALUM. WINDOW FLOOR



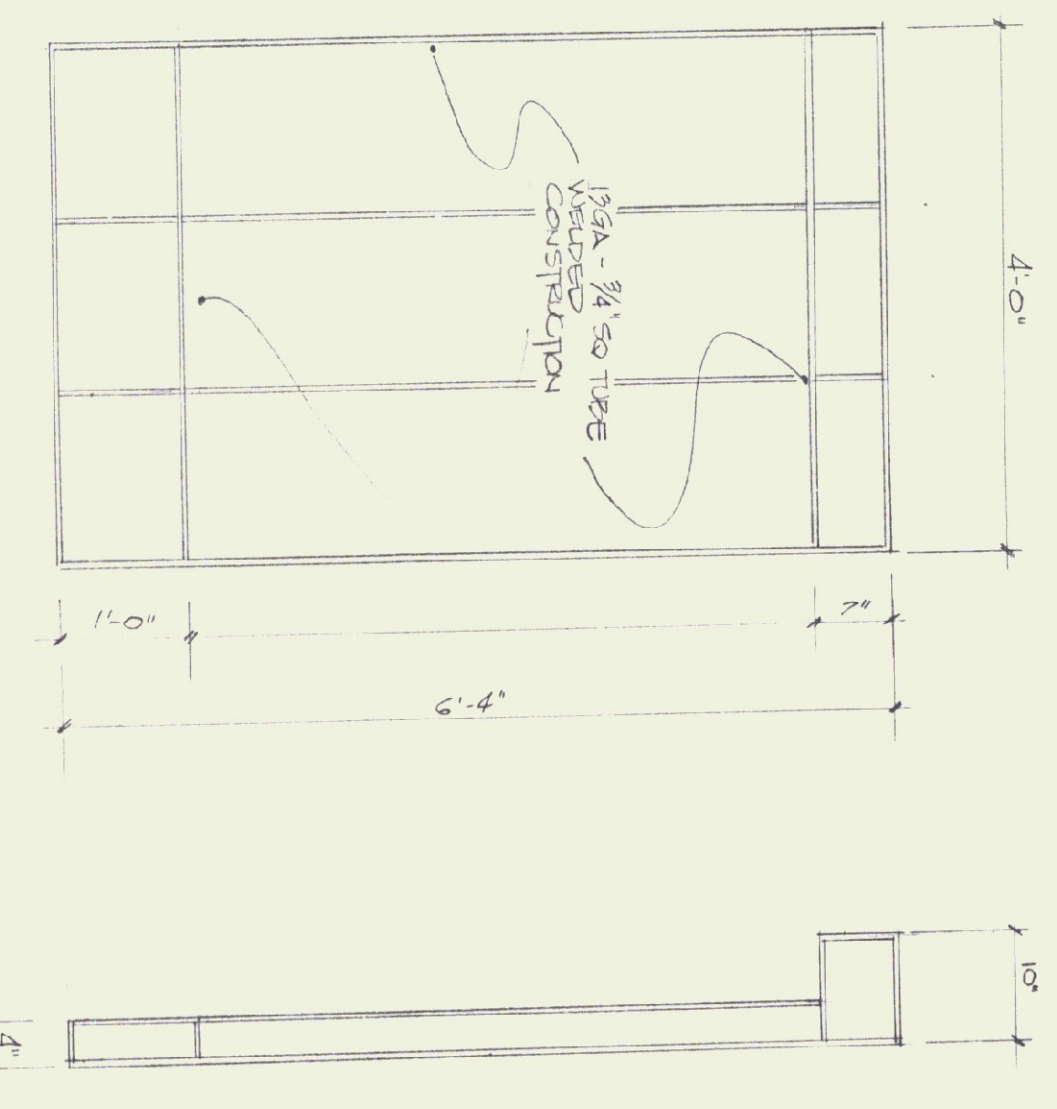
SECTION (AAA)



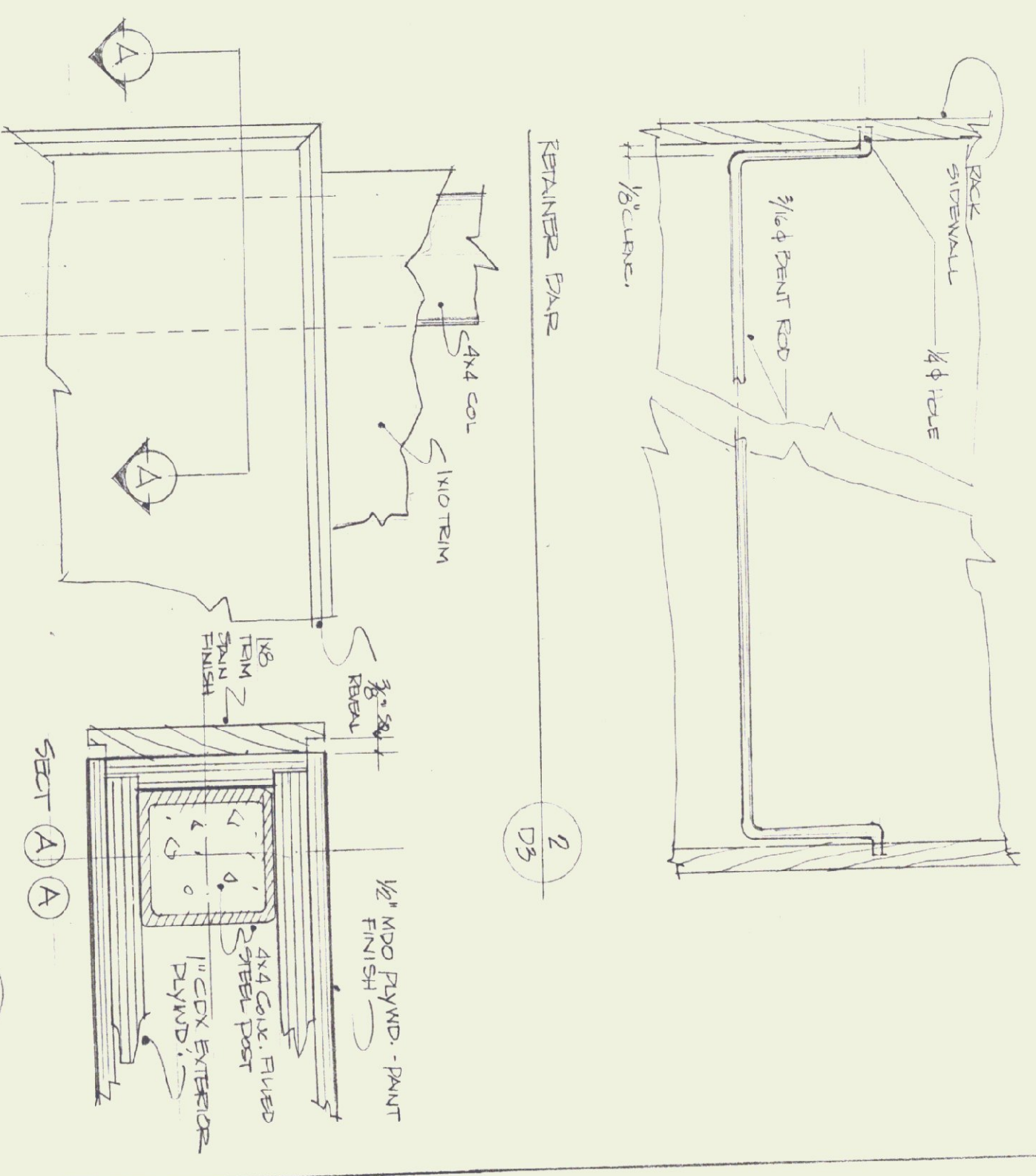
SECTION

ELEVATION

PHOTO FRIEZE MOUNTING DETAIL



WELDED FRAMEWORK



TRIM DETAIL - EXTERIOR KIOSK



DISPLAY DETAILS

ARCHITECT: THOMAS B. LEYTHAM
 50 STATE STREET, MONTPELIER, VERMONT 05602
 MECHANICAL/ELECTRICAL: AVENCO
 83 S. MAIN STREET, WATERBURY, VERMONT 05676
 LANDSCAPE: THE CANNON PARTNERSHIP
 605 456 CANNON, VERMONT 05142
 STRUCTURAL: CHEMETTE ENGINEERING
 50 STATE STREET, MONTPELIER, VERMONT 05602
 GRAPHIC SYSTEMS: HUSTON & CO.
 BOX 134, BURLINGTON, VERMONT 05401

802 229 0430
 802 244 8802
 802 226 7200
 802 229 1442
 802 864 5928

STATE OF VERMONT
 DEPARTMENT OF STATE BUILDINGS
 AGENCY OF ADMINISTRATION
 MONTPELIER, VERMONT

BRADFORD I-91 NORTHBOUND
 REST AREA REHABILITATION

drawing number: **D3**
 date: 9/24/93
 SHEET 13 OF 24