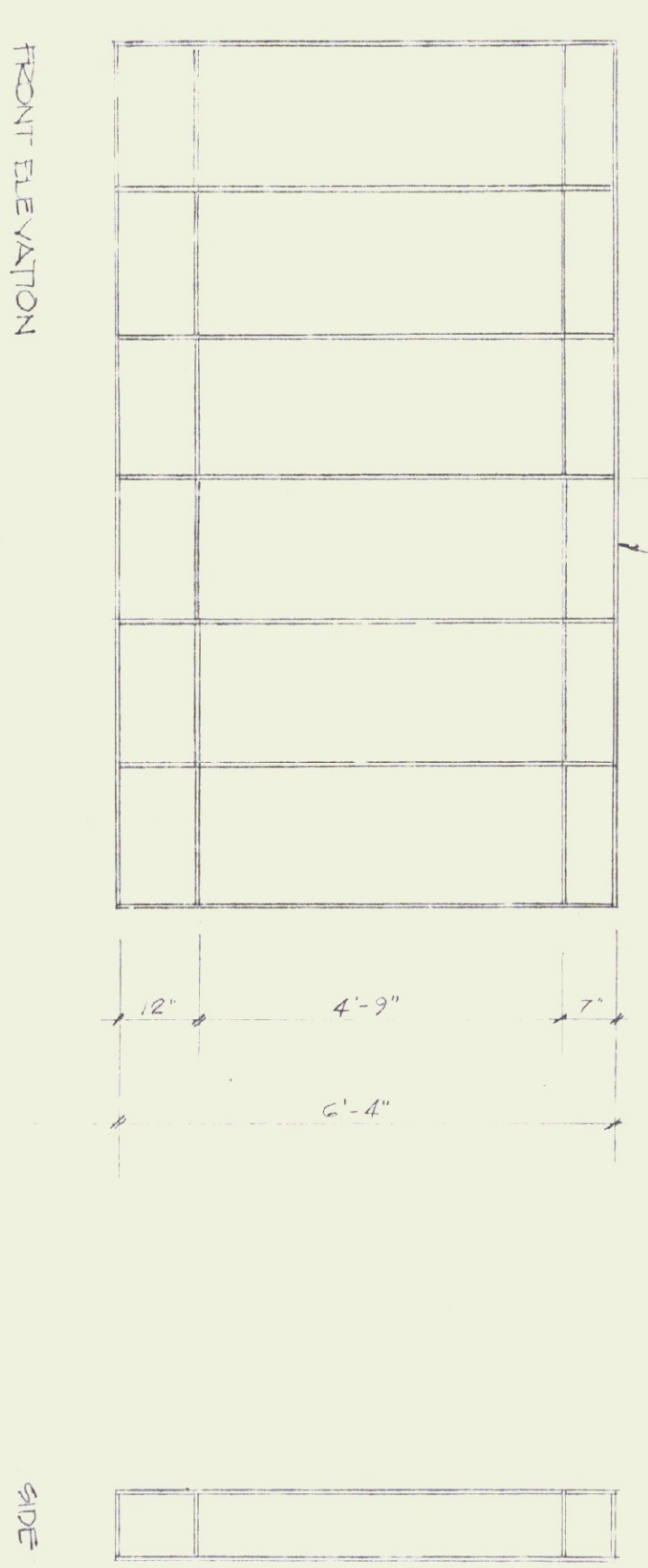
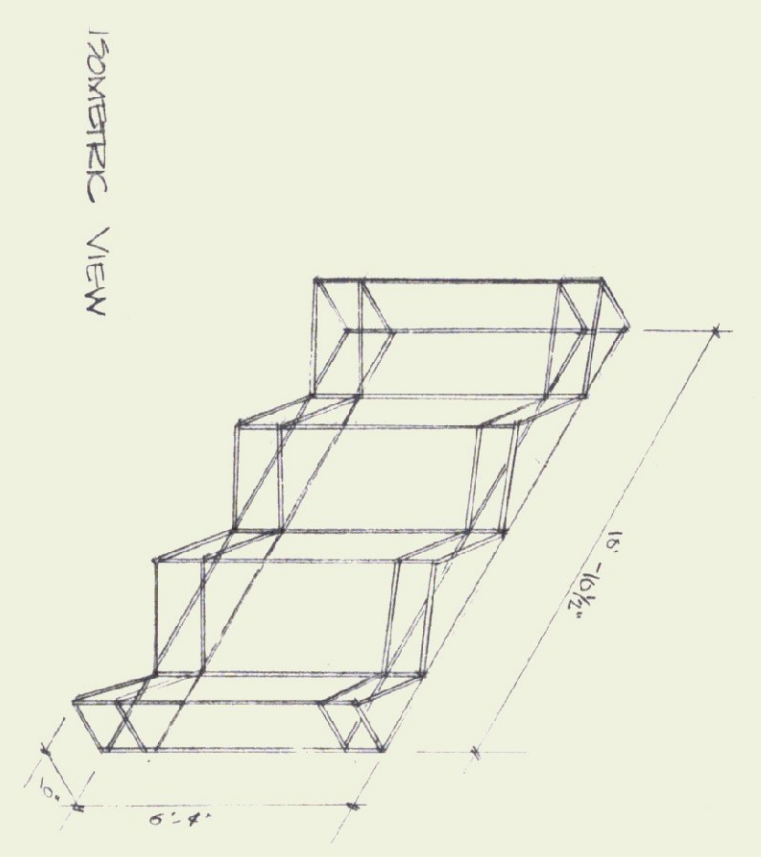


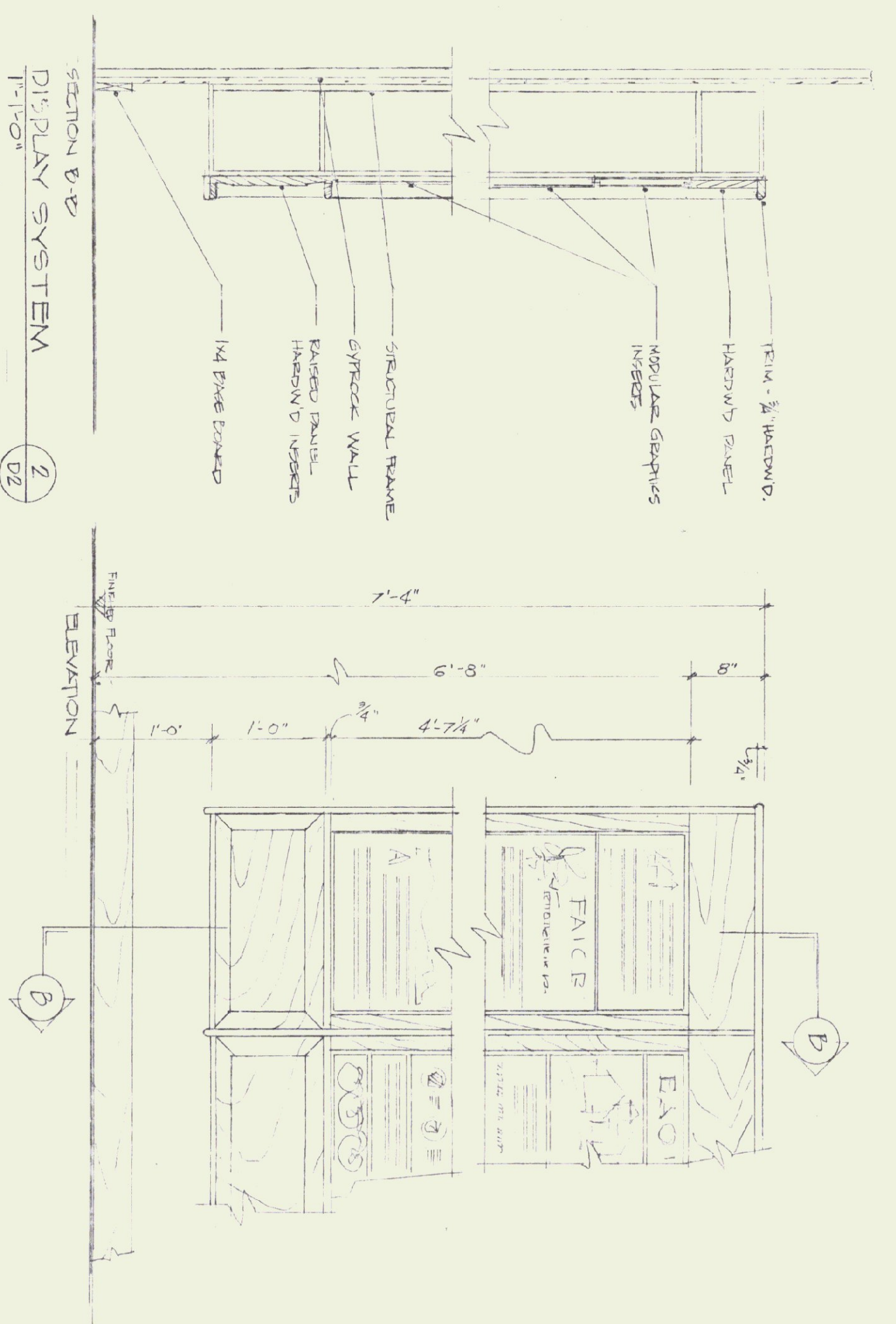
1/4" 3/4" 50 STEEL TUBE
WELDED CONSTRUCTION



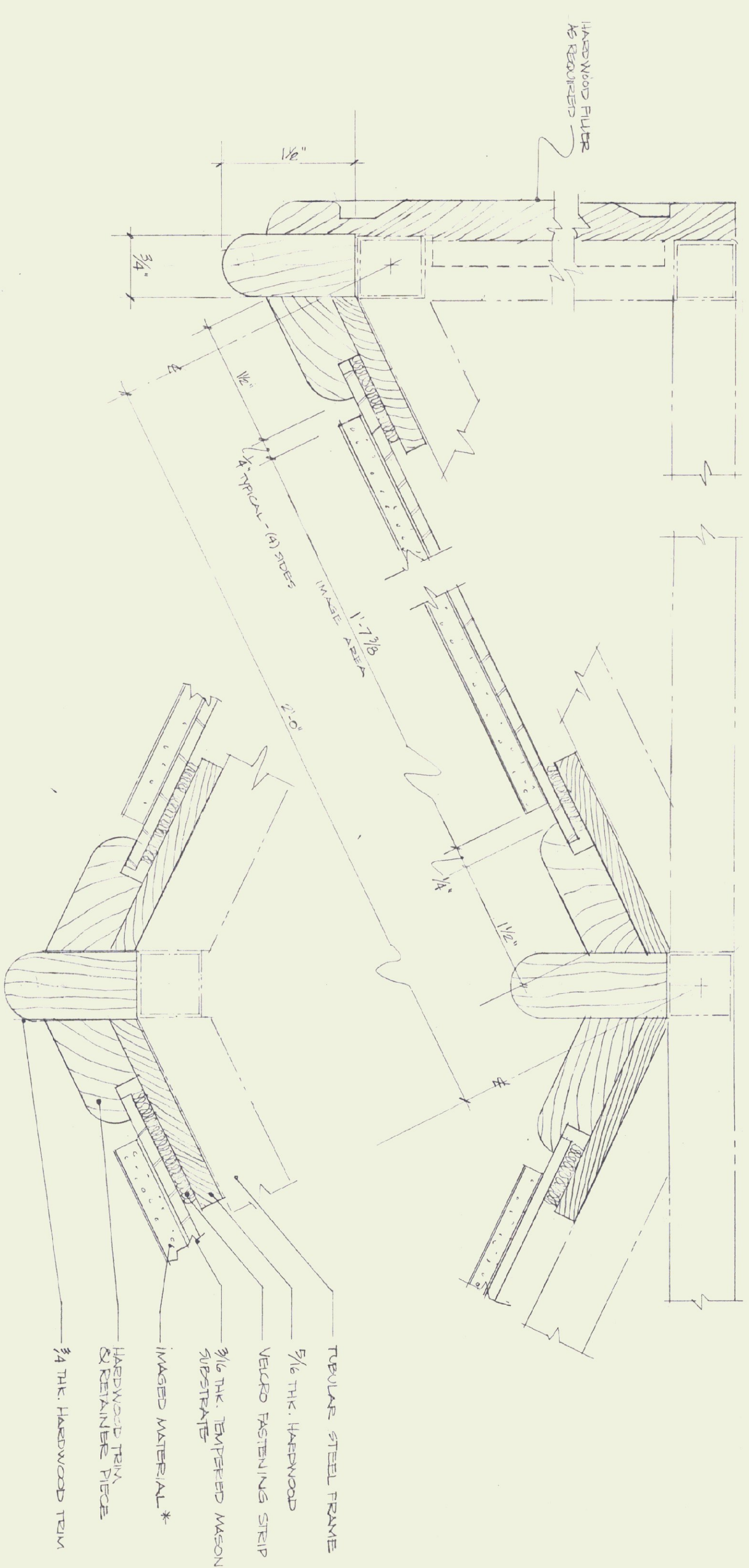
SIDE

STRUCTURAL FRAME (21 BAYS)
1/2" x 11'-0"

D2 1

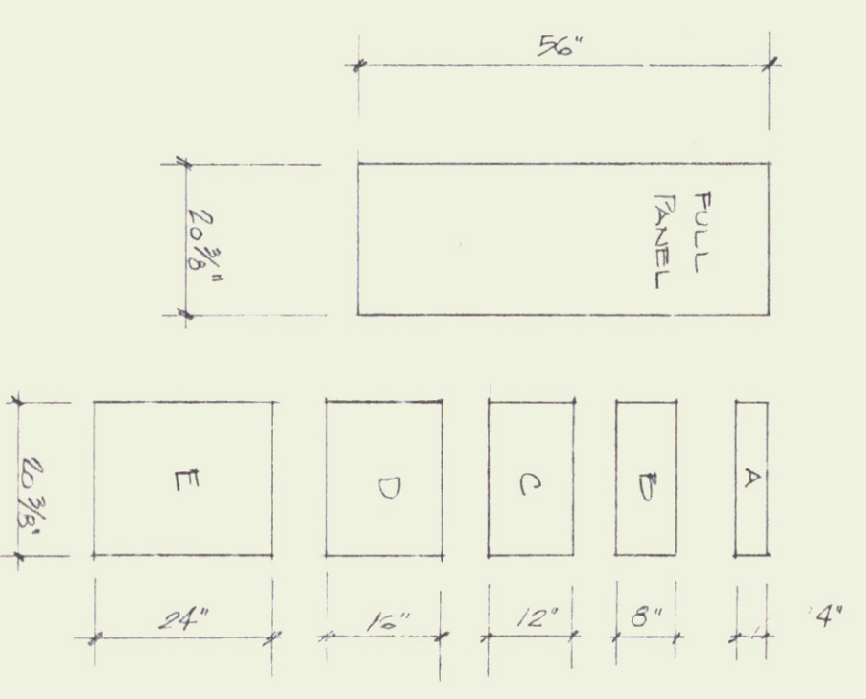


D2 2



DISPLAY TRIM DETAILS SECTION FULL SIZE

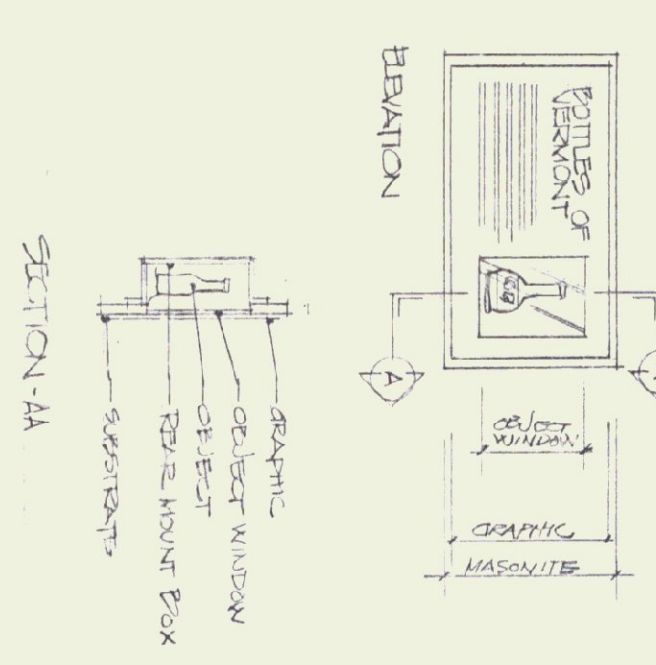
D2 3



MASONITE SUBSTRATE MODULES 1/2" x 11'-0"

* GRID & PANEL OPTIONS SCALE AS NOTED

OBJECT HOLDER MODULES 1/2" x 11'-0"



D2 4

* TYPICAL MODULE CONSTRUCTION IMAGING & MATERIALS

- PAINTED MASONITE - MDO 12/1/12
- FIBERGLASS LAMINATE - FEV LETTERS
- SILK SCREEN IMAGES -
- PHOTOGRAPHIC - GENTLE BOUNDED - FOAM CORE
- LUCITE - LEVAY - CLEAR OR COLOR
- HAND PAINTED PANELS
- FIBRIC COBLENDS
- INANVENTIC VINYL - VELLERO
- BACK ILLUMINATED - INTERMALL ILLUMINATION
- AUDIO SPEAKER SYSTEMS
- COMPUTER TOUCH SCREENS / CRT DISPLAYS

ARCHITECT: THOMAS B. LEYTHAM
50 STATE STREET, MONTPELIER, VERMONT 05602 802 228 0430
MECHANICAL/ELECTRICAL: AVENGO CO
89 S. MAIN STREET, WATERBURY, VERMONT 05676 802 244 8902
LANDSCAPE: THE CAVENDISH PARTNERSHIP
BOX 466, CAVENDISH, VERMONT 05442 802 228 7220
STRUCTURAL: CHEVETTE ENGINEERING
50 STATE STREET, MONTPELIER, VERMONT 05602 802 229 1442
GRAPHIC SYSTEMS: HUSTON & CO
BOX 1004, BURLINGTON, VERMONT 05401 802 864 5928

EXHIBIT DETAILS

STATE OF VERMONT
DEPARTMENT OF STATE BUILDINGS
AGENCY OF ADMINISTRATION
MONTPELIER, VERMONT

BRADFORD I-91 NORTHBOUND
REST AREA REHABILITATION

drawing number:
D2
date: 9/24/95
SHEET 12 OF 24