

DATE	LOCATION	DESCRIPTION	BY

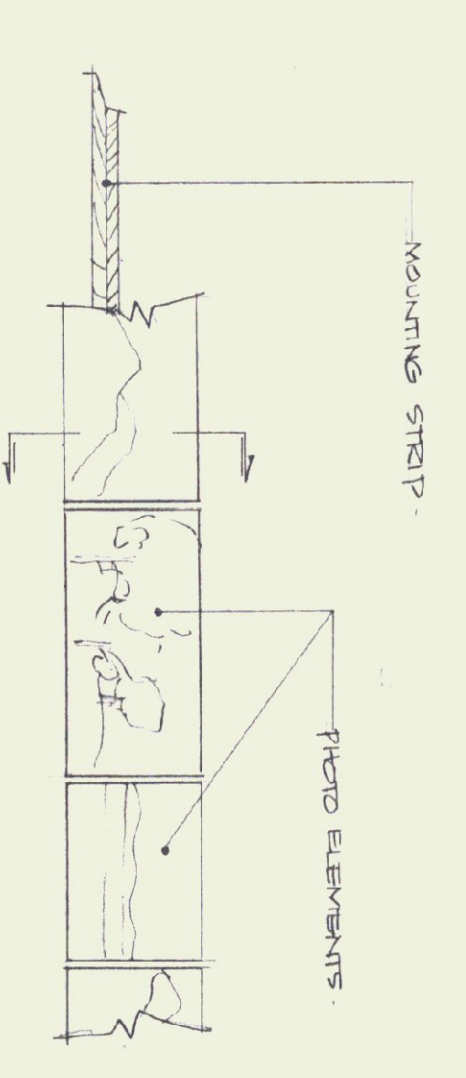
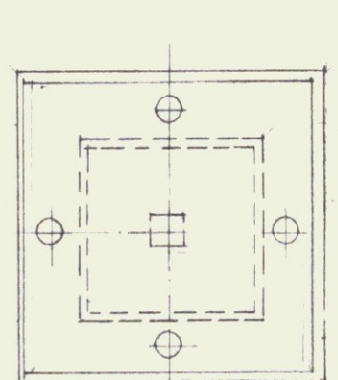
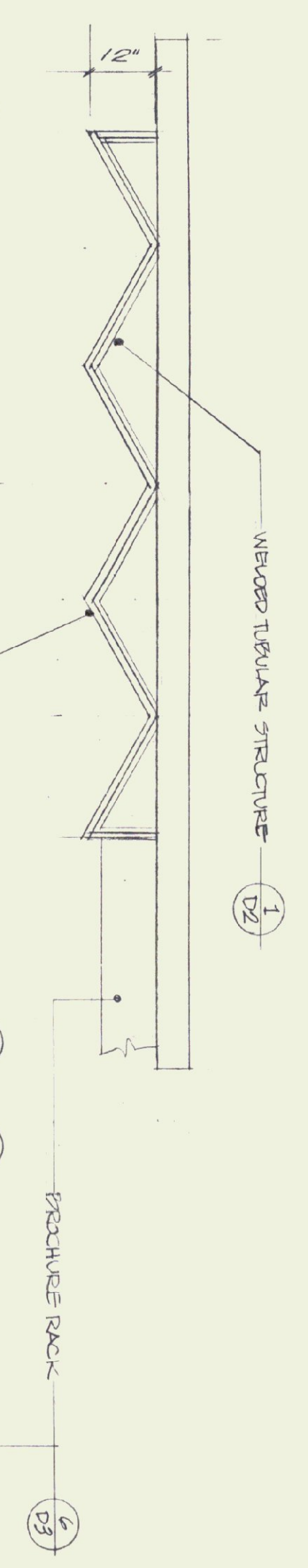
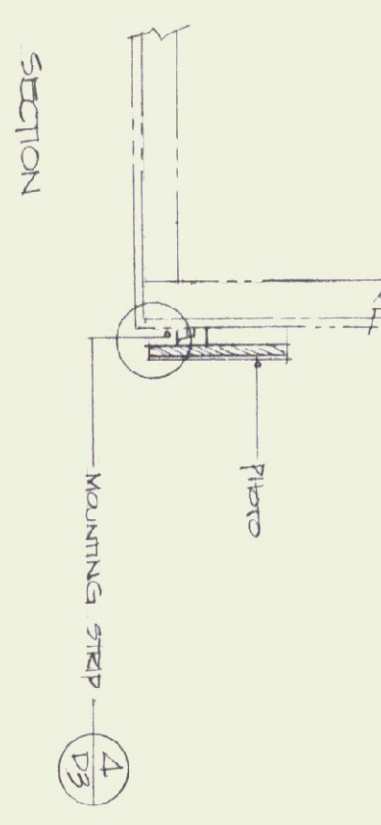
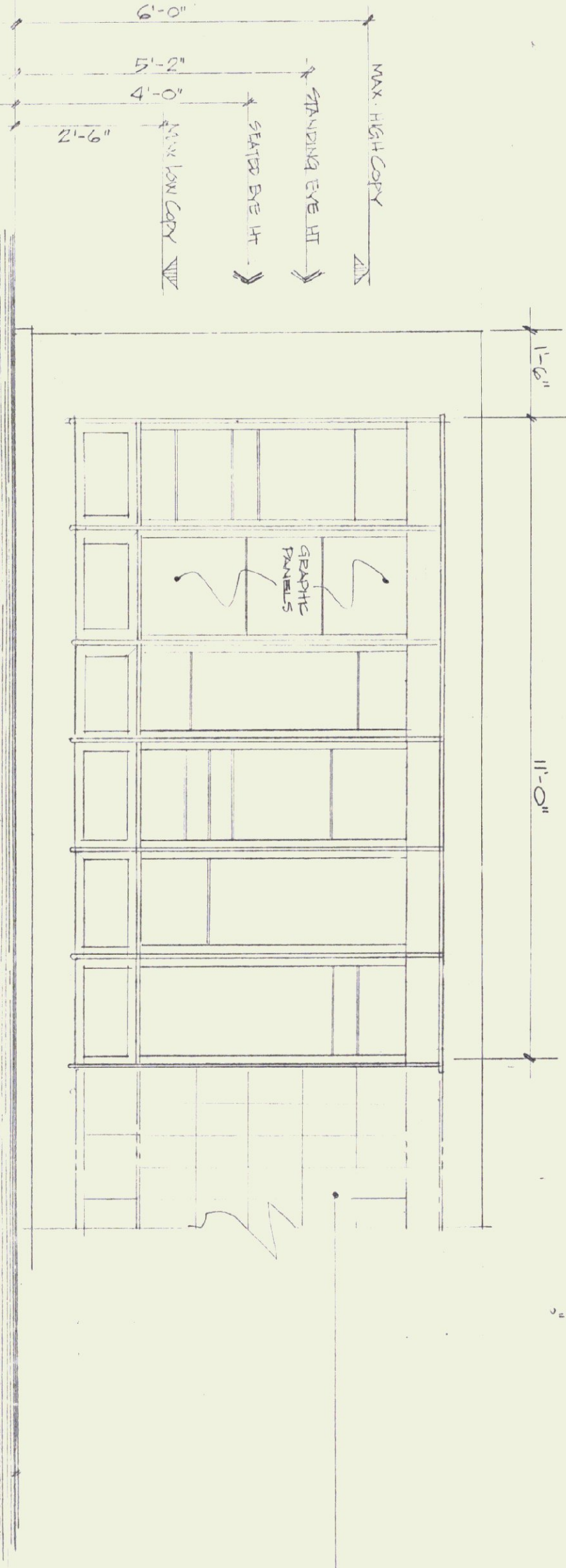


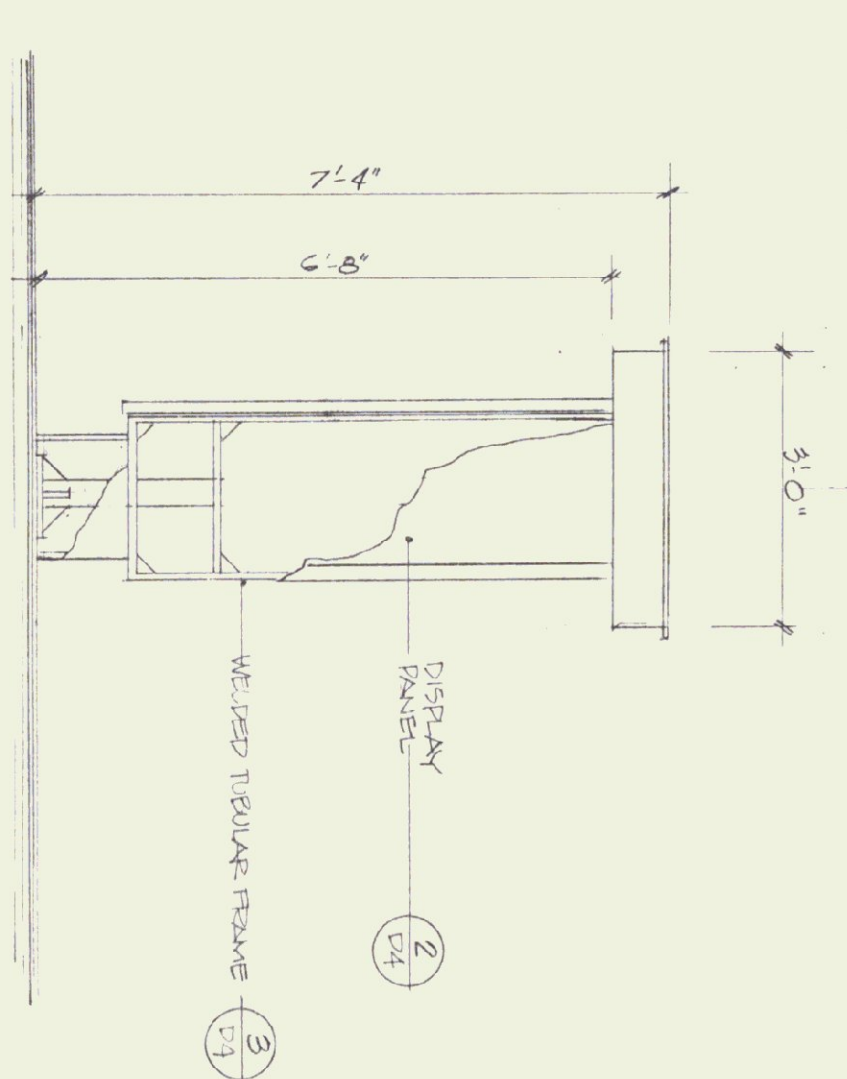
PHOTO FRIEZE - ELEVATION
1/2" = 1'-0"



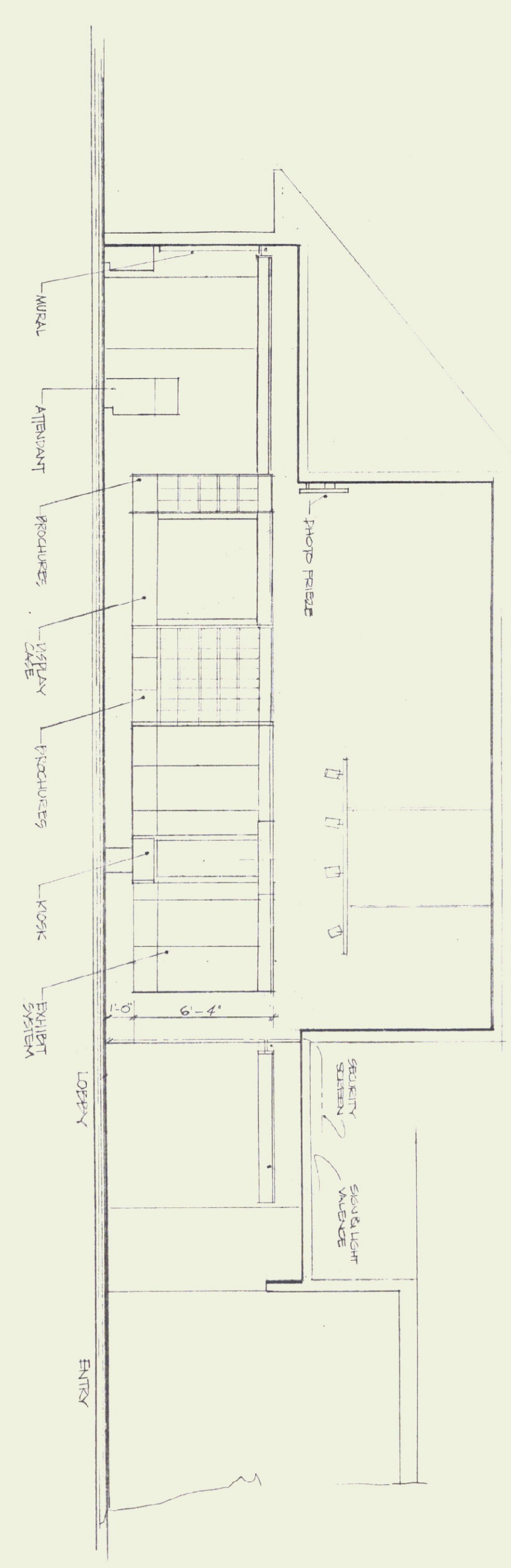
SECTION



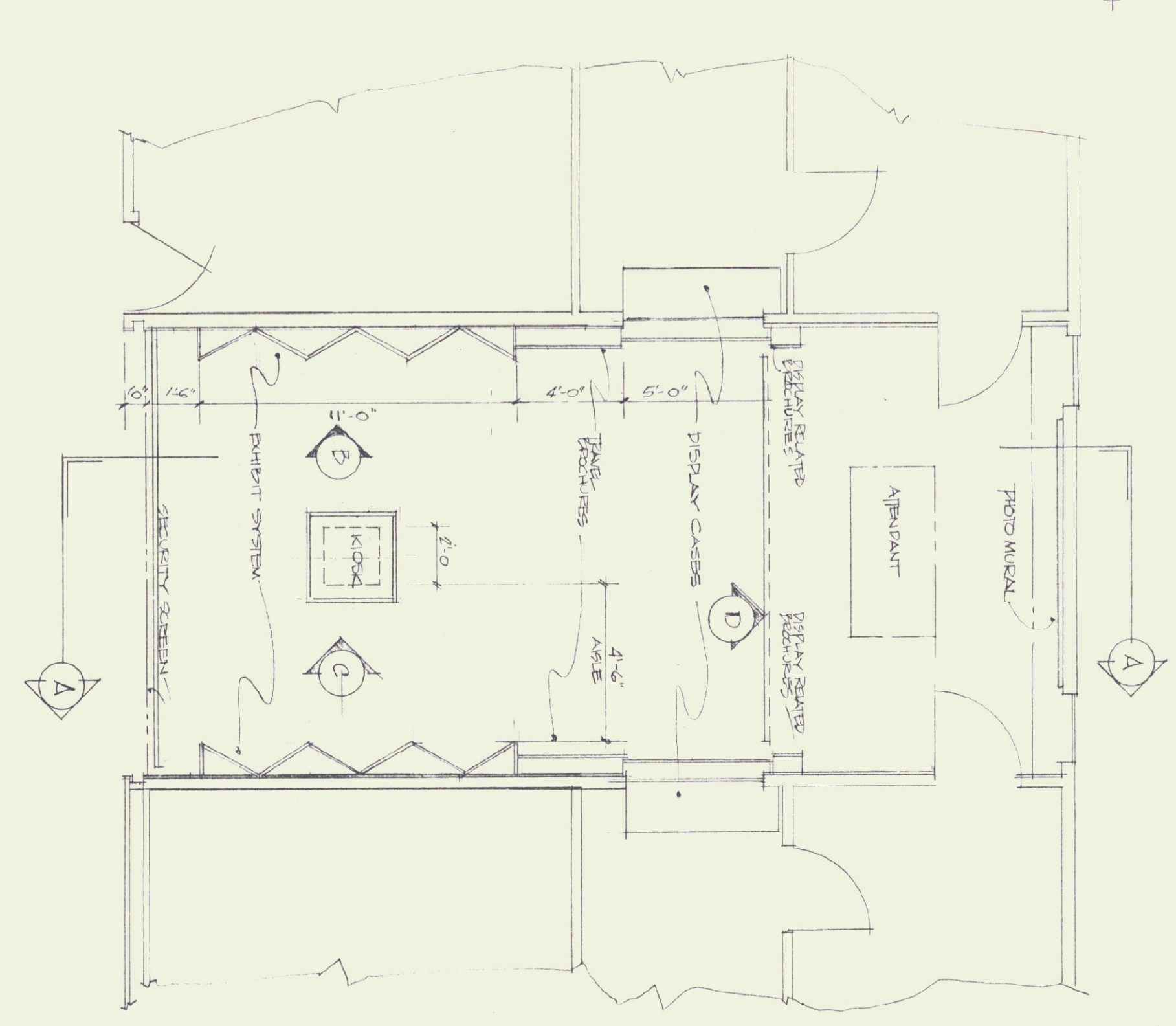
ELEVATION OF EXHIBIT SYSTEM
B



ELEVATION OF KIOSK
1/2" = 1'-0"



ELEVATION A-A
1/2" = 1'-0"



PLAN
1/2" = 1'-0"

ARCHITECT: THOMAS B. LEYTHAM
80 STATE STREET MONTPELIER, VERMONT 05602 802 229 0430
MECHANICAL/ELECTRICAL: AVENGCO
83 S. MAIN STREET WATERBURY, VERMONT 05676 802 244 8802
LANDSCAPE: THE CAVENDISH PARTNERSHIP
BOX 456 CAVENDISH, VERMONT 05142 802 226 7220
STRUCTURAL: CHENETTE ENGINEERING
80 STATE STREET MONTPELIER, VERMONT 05602 802 229 1442
GRAPHIC SYSTEMS: HUSTON & CO
BOX 104 BURLINGTON, VERMONT 05401 802 864 5828

DISPLAY ELEMENTS

LOCATION PLAN & ELEVATIONS

STATE OF VERMONT
DEPARTMENT OF STATE BUILDINGS
AGENCY OF ADMINISTRATION
MONTPELIER, VERMONT

BRADFORD I-91 NORTHBOUND
REST AREA REHABILITATION

drawing number:
D11
date: 9/24/95
SHEET 11 OF 24