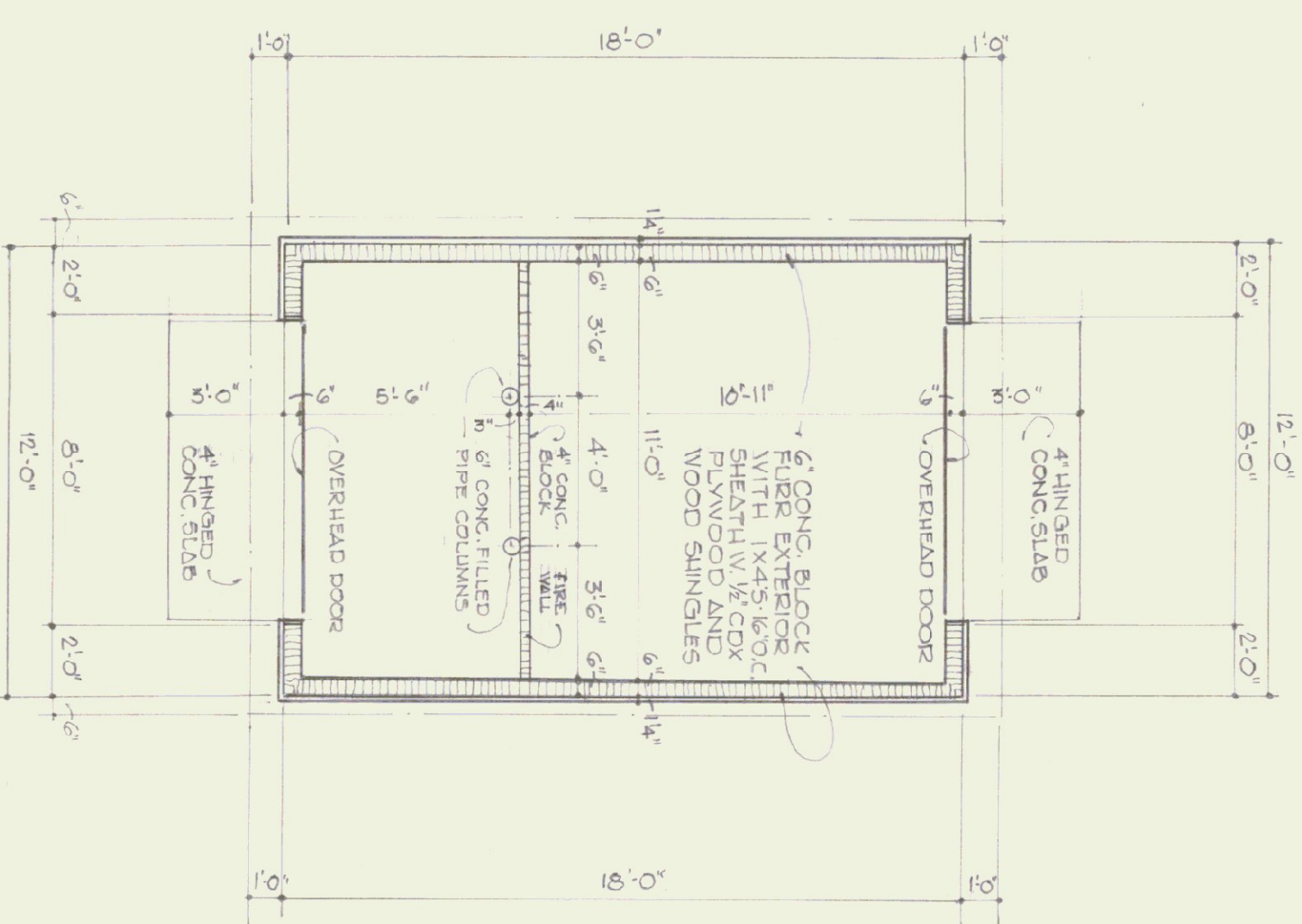
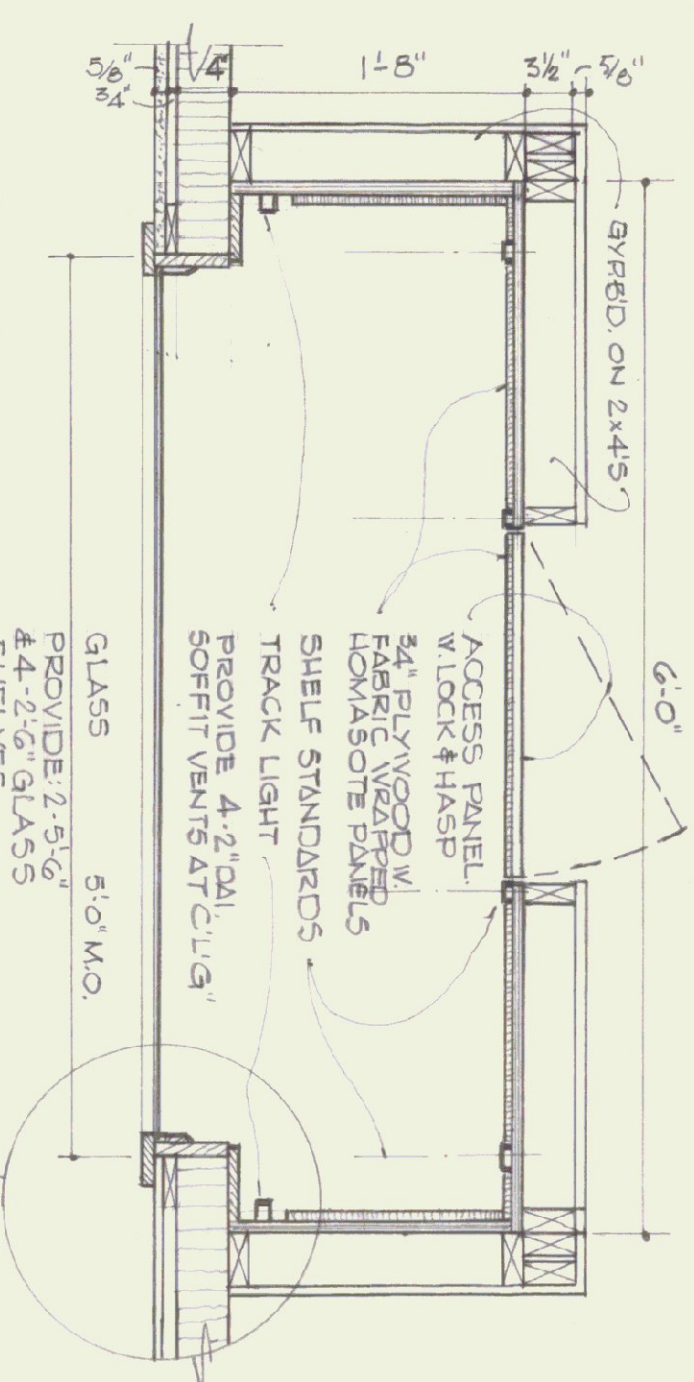


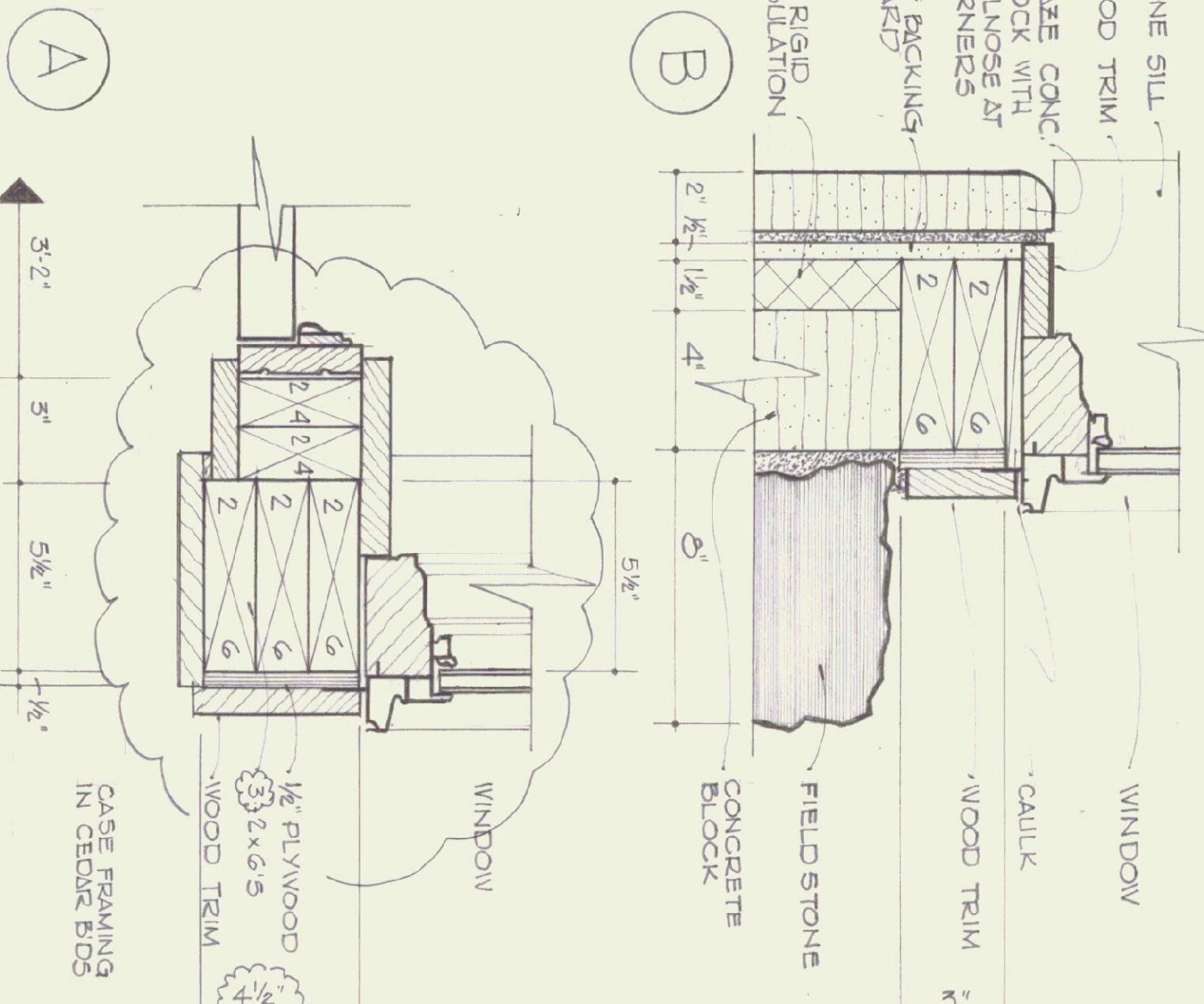
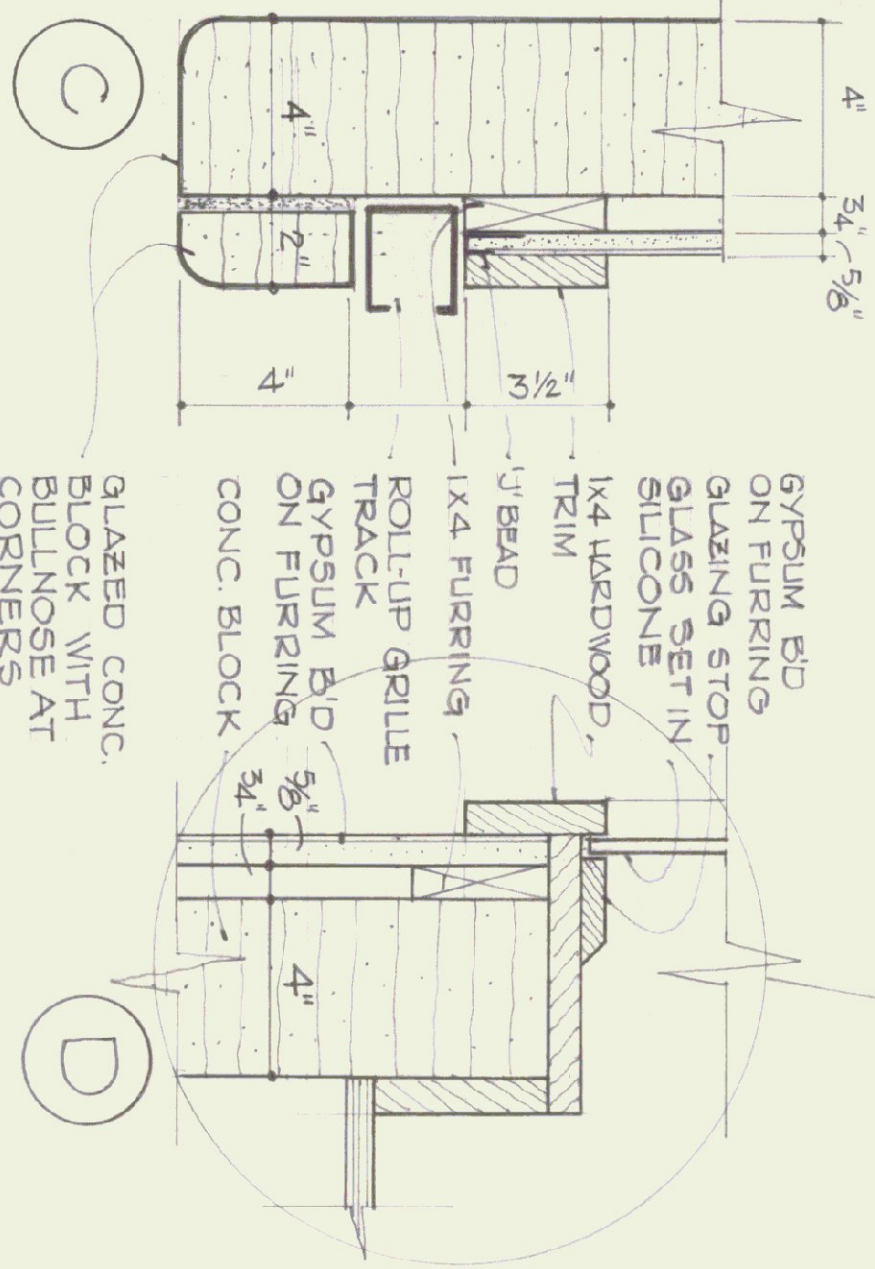
KIOSK: FLOOR PLAN SCALE: 1/4"=1'-0"



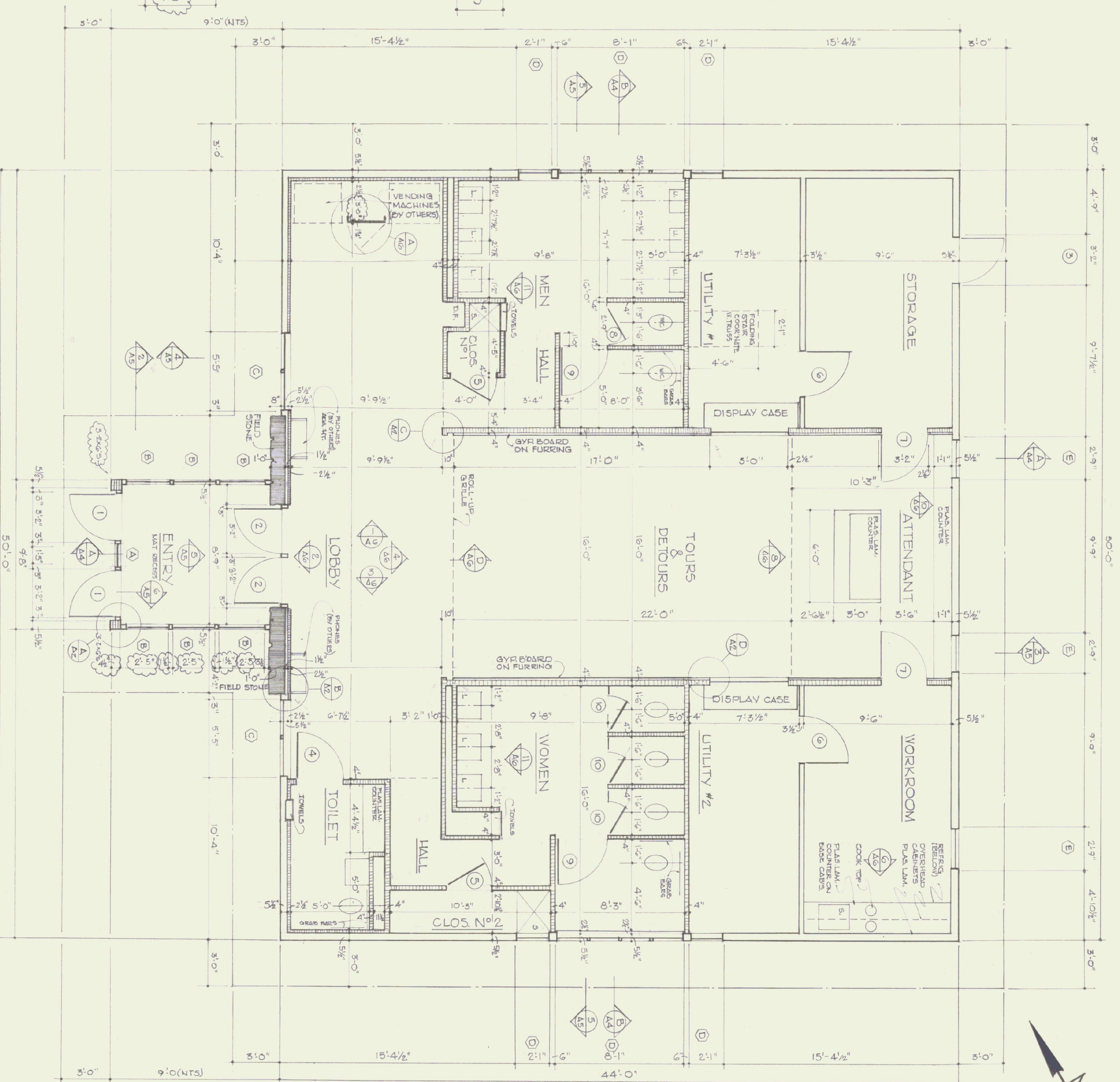
UTILITY BUILDING: PLAN SCALE: 1/4"=1'-0"



DISPLAY CASE SCALE: 1/4"=1'-0"



PLAN DETAILS SCALE: 3/4"=1'-0"



INFORMATION CENTER: FLOOR PLAN SCALE: 1/4"=1'-0"

ARCHITECT: THOMAS B. LEYTHAM  
 50 STATE STREET MONTPELIER, VERMONT 05602  
 MECHANICAL/ELECTRICAL: AVENGO  
 83 S. MAIN STREET WAREHOUS, VERMONT 05676  
 LANDSCAPE: THE CAVENDISH PARTNERSHIP  
 BOX 486 CAVENDISH, VERMONT 05142  
 STRUCTURAL: CHENETTE ENGINEERING  
 50 STATE STREET MONTPELIER, VERMONT 05602  
 GRAPHIC SYSTEMS: HUSTON & CO.  
 BOX 1034 BURLINGTON, VERMONT 05401

# FLOOR PLANS

## DETAILS

STATE OF VERMONT  
 DEPARTMENT OF STATE BUILDINGS  
 AGENCY OF ADMINISTRATION  
 MONTPELIER, VERMONT

BRADFORD I-91 NORTHBOUND  
 REST AREA REHABILITATION

Drawing number:  
**A2**

date: 7/24/95  
 REVISED: 9/7/94

SHEET 6 OF 24