

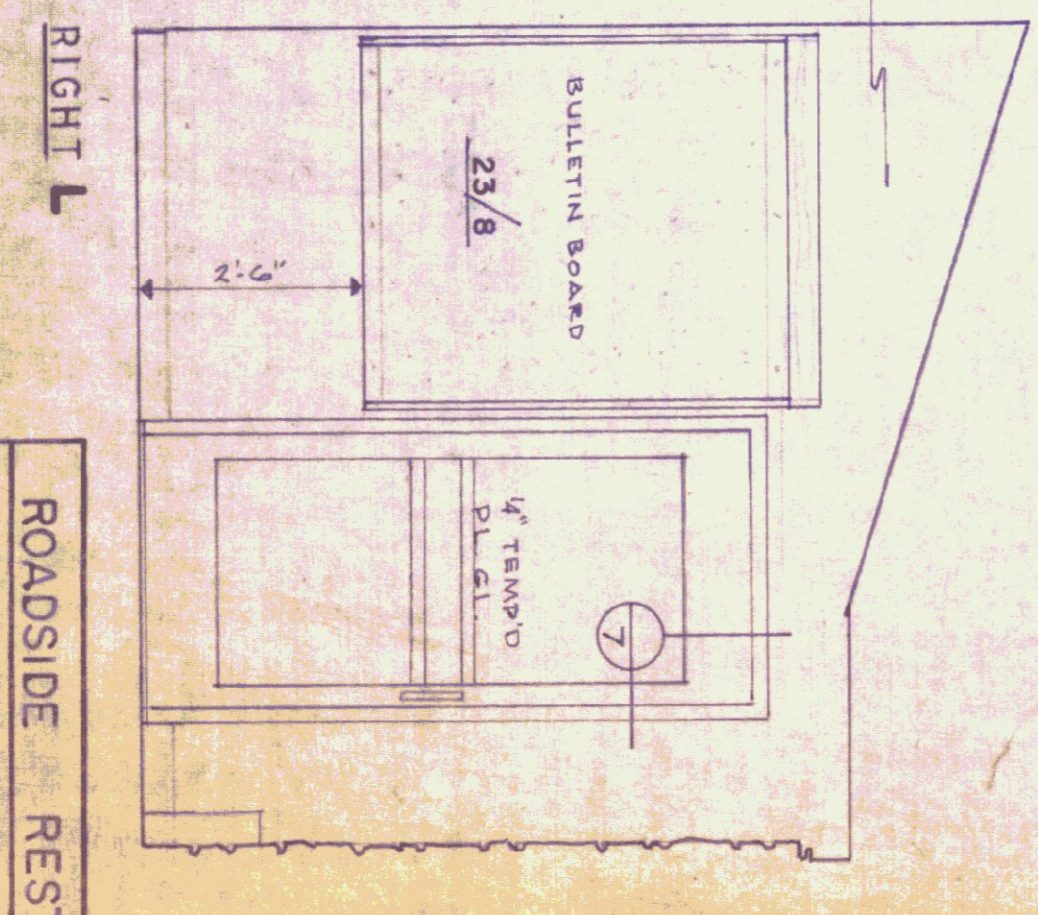
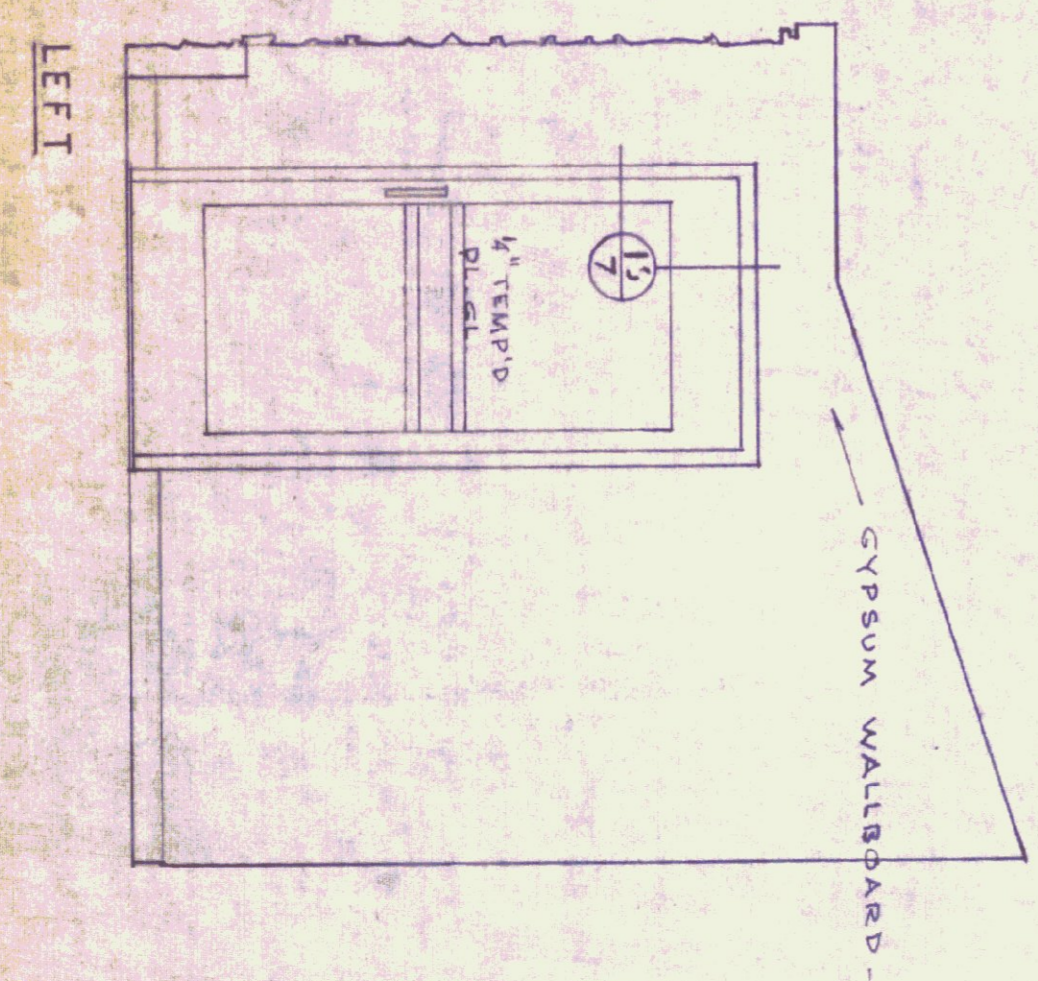
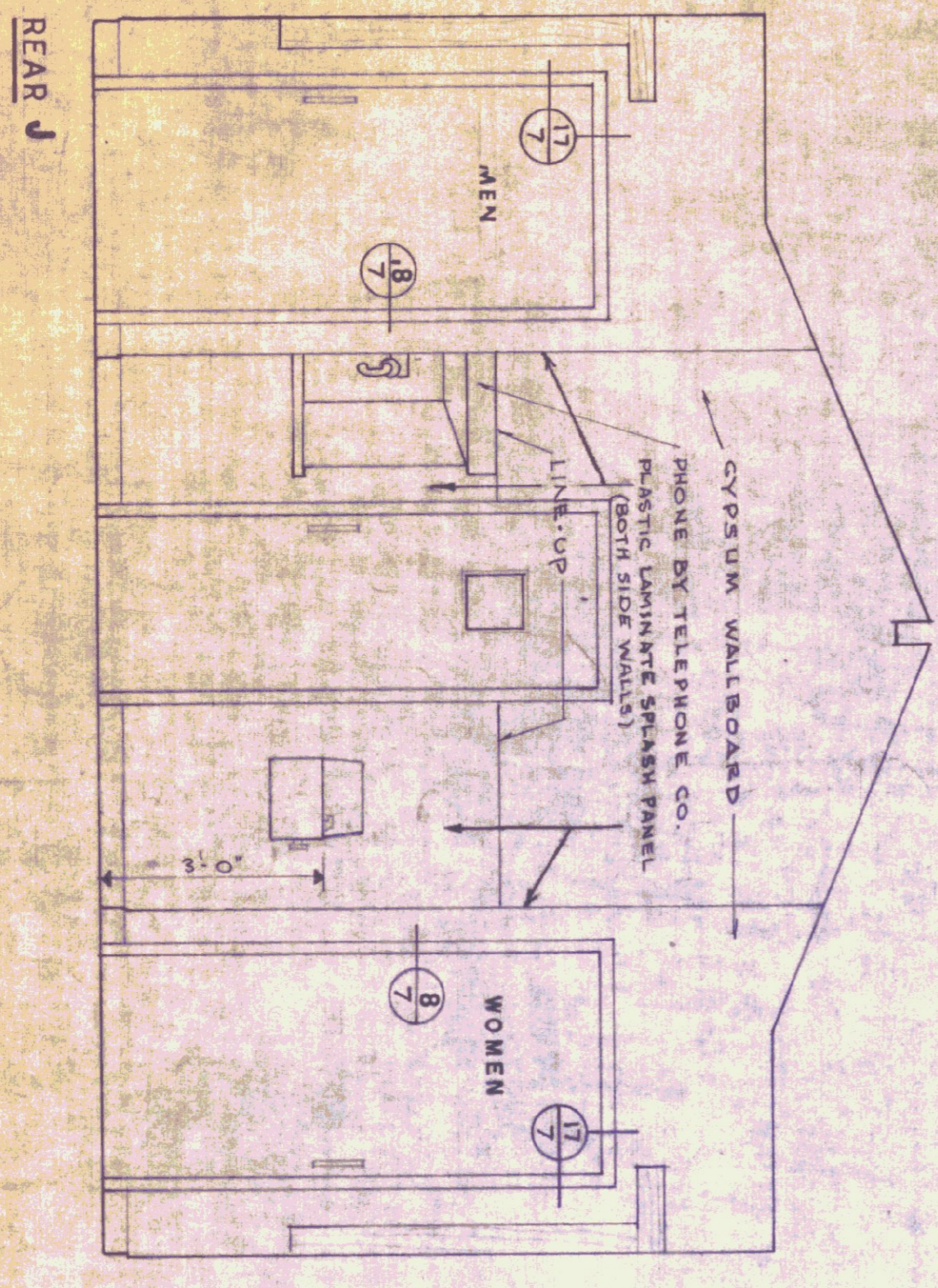
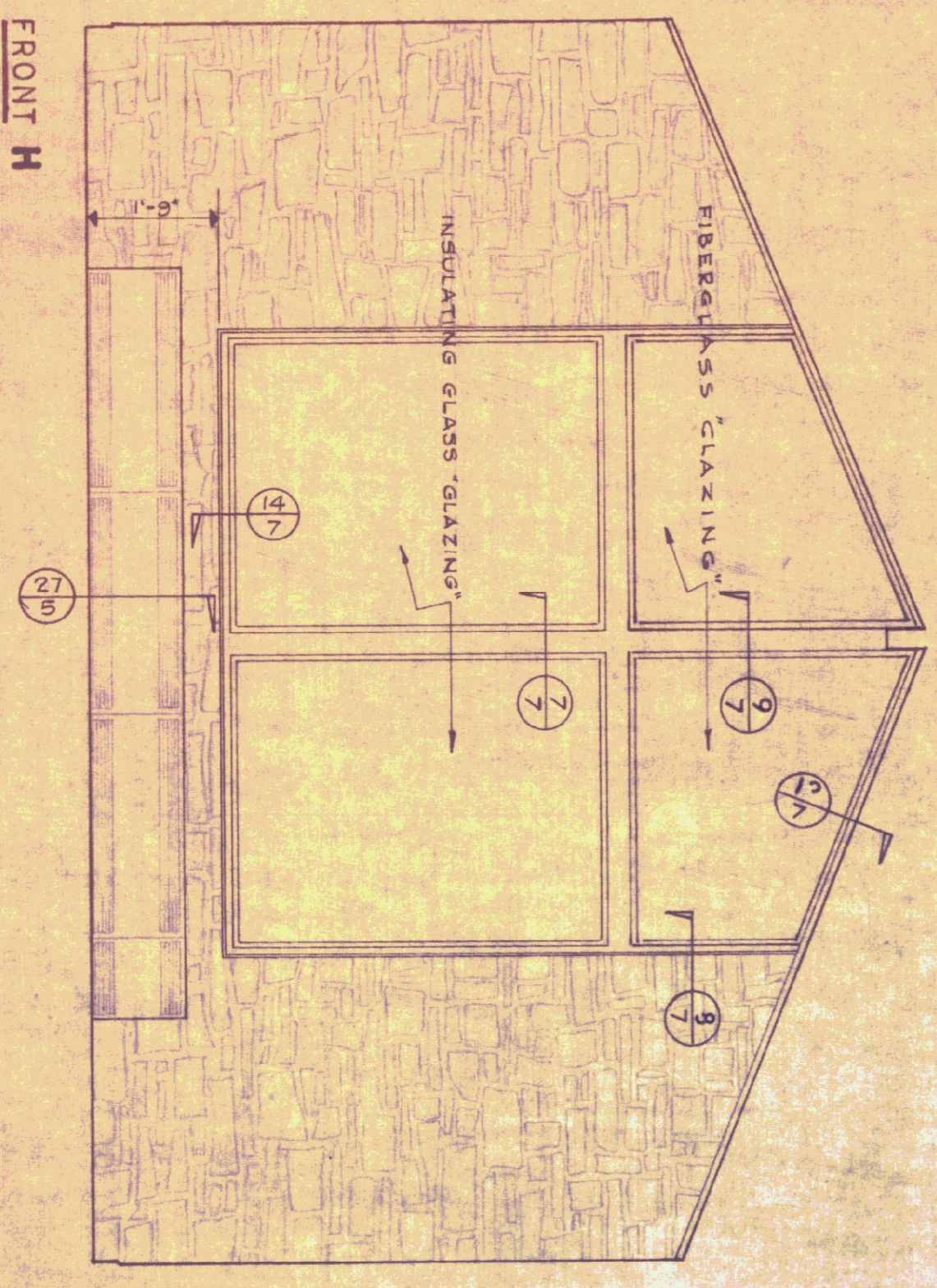
NOTE:
 #549 CLASSIC SOLID PLASTIC SEAT WITH COVER, #720 (CLOSED FRONT SEAT), #721 (OPEN FRONT SEAT) EXTRA HEAVY DUTY SEAT & COVER OR EQUIVALENT FOR PARAPLEGICS.

4" TO 6" WASHED GRAVEL FILL
 POLYETHYLENE MOISTURE STOP
 2" X 3" RIGID POLYSTYRENE SLAB INSULATION

NOTE: ALL FIXTURE HEIGHTS SHOWN MUST BE MAINTAINED & REPAIRABLES OR MAINTENANCE RECOMMENDATIONS ALL VENTS TO BE FRAMED WITH 2 X 4 LUMBER
 FOUNTAIN MOUNTINGS TO BE REINFORCED WITH 2 X 4 LUMBER

NOTE:
 #549 CLASSIC SOLID PLASTIC SEAT WITH COVER, #720 (CLOSED FRONT SEAT) OR #721 (OPEN FRONT SEAT) EXTRA HEAVY DUTY SEAT & COVER OR EQUIVALENT FOR PARAPLEGICS.

SECTION A-A



LOBBY ELEVATIONS

ROADSIDE REST FACILITIES
 LONGITUDINAL SECTION & INTERIOR ELEV'S.