

ELECTRICAL SYMBOL LEGEND
REFER TO ELECTRICAL SPECIFICATIONS DIVISION 16000 FOR MORE INFORMATION.

POWER

- ⊕ EQUIPMENT CONNECTION
- ⊕ LIGHT SWITCH, (Q) LOWER CASE LETTER DENOTES SWITCH LOOP (#) DENOTES TYPE, 3=3-WAY, 4=4-WAY, etc.
- ⊕ MOTOR SENTINAL SWITCH
- ⊕ LIGHT SWITCH WITH PILOT LIGHT
- ⊕ OCCUPANCY SENSOR LIGHT SWITCH
- ⊕ MOMENTARY LOW VOLTAGE SWITCH
- ⊕ DIMMER SWITCH
- ⊕ SPEED CONTROL SWITCH
- ⊕ KEY OPERATED SWITCH
- ⊕ SPECIAL RECEPTACLE, SUBSCRIPT DENOTES NEMA CONFIGURATION
- ⊕ GROUND FAULT DUPLEX RECEPTACLE
- ⊕ SINGLE RECEPTACLE
- ⊕ DUPLEX RECEPTACLE
- ⊕ QUADRAPLEX RECEPTACLE
- ⊕ DUPLEX RECEPTACLE, ABOVE COUNTER
- ⊕ GROUND FAULT DUPLEX RECEPTACLE, W/ WEATHER PROOF BOX AND COVER
- ⊕ DUPLEX RECEPTACLE, FLOOR MOUNTED
- ⊕ JUNCTION BOX
- ⊕ THERMOSTAT
- ⊕ FLOOR BOX, W/DUPLEX RECEPTACLE AND COMBO TELE/DATA OUTLET
- ⊕ OCCUPANCY SENSOR, WALL MOUNTED
- ⊕ OCCUPANCY SENSOR, CEILING MOUNTED
- ⊕ OCCUPANCY SENSOR, POWER PACK
- ⊕ PHOTO CONTROLLED SWITCH
- ⊕ AMBIENT LIGHT SENSOR
- ⊕ NON-FUSED DISCONNECT SWITCH
- ⊕ FUSED DISCONNECT SWITCH
- ⊕ MOTOR STARTER
- ⊕ COMBINATION MOTOR STARTER/DISCONNECT
- ⊕ CIRCUIT BREAKER W/ENCLOSURE
- ⊕ AUTO TEMPERATURE CONTROL PANEL
- ⊕ MOTOR
- ⊕ TRANSFORMER
- ⊕ PANELBOARD
- ⊕ HAND DRYER
- ⊕ TIME CLOCK
- ⊕ PUSH BUTTON
- ⊕ FIRMATIC
- ⊕ WIREMOLD, REFER TO PRINT FOR DEVICES TO BE INSTALLED.
- ⊕ BUSWAY
- ⊕ CABLETRAY
- ⊕ WIREWAY
- ⊕ POWER/COMM. POLE
- ⊕ BRANCH CIRCUIT HOMERUN TO PANELBOARD
- ⊕ BRANCH CIRCUIT
- ⊕ BRANCH CIRCUIT BELOW GRADE
- ⊕ UNDERGROUND PRIMARY
- ⊕ UNDERGROUND SECONDARY
- ⊕ COMM- UNDERGROUND COMMUNICATION
- ⊕ CABLE MANAGEMENT SYSTEM

LIGHTING

- ⊕ EXIT LIGHT, WALL MOUNTED, LETTER DENOTES TYPE
- ⊕ EXIT LIGHT, CEILING MOUNTED, LETTER DENOTES TYPE
- ⊕ EMERGENCY LIGHTS, BATTERY
- ⊕ EMERGENCY LIGHTS, REMOTE BATTERY
- ⊕ EMERGENCY LIGHTS, REMOTE HEAD
- ⊕ SURFACE FLUORESCENT FIXTURE, LETTER DENOTES TYPE, SMALL LETTER DENOTES SWITCH LOOP
- ⊕ RECESSED MOUNTED FLUORESCENT FIXTURE, LETTER DENOTES TYPE, SMALL LETTER DENOTES SWITCH LOOP
- ⊕ WALL MOUNTED FLUORESCENT FIXTURE, LETTER DENOTES TYPE, SMALL LETTER DENOTES SWITCH LOOP
- ⊕ STROBE LIGHT FIXTURE, LETTER DENOTES TYPE, SMALL LETTER DENOTES SWITCH LOOP
- ⊕ EMERGENCY LIGHT FIXTURE, LETTER DENOTES TYPE
- ⊕ WALL MOUNTED LIGHT FIXTURE, LETTER DENOTES TYPE, SMALL LETTER DENOTES SWITCH LOOP
- ⊕ CEILING MOUNTED/RECESSED LIGHT FIXTURE, LETTER DENOTES TYPE, SMALL LETTER DENOTES SWITCH LOOP
- ⊕ BOLLARD LIGHT FIXTURE
- ⊕ POLE LIGHT, SINGLE HEAD
- ⊕ POLE LIGHT, DOUBLE HEAD
- ⊕ FAN/LIGHT COMBINATION
- ⊕ TRACK LIGHTING W/FIXTURE HEAD
- ⊕ EMERGENCY LIGHTING SWITCHING RELAY SEE DETAIL I, SHEET ES.2

FIRE ALARM

- ⊕ MANUAL FIRE PULL STATION
- ⊕ MASTER BOX
- ⊕ BELL
- ⊕ BEAM DETECTOR
- ⊕ SPEAKER
- ⊕ STROBE LIGHT/SPEAKER
- ⊕ STROBE LIGHT/HORN, SUBSCRIPT INDICATES STROBE CANDELA LEVEL
- ⊕ STROBE LIGHT, SUBSCRIPT INDICATES CANDELA LEVEL
- ⊕ HORN
- ⊕ MAGNETIC DOOR HOLDER
- ⊕ REMOTE TEST STATION
- ⊕ CHIME/STROBE LIGHT
- ⊕ SMOKE DETECTOR, NO SUBSCRIPT PHOTOELECTRIC, SUBSCRIPT I=IONIZATION
- ⊕ HEAT DETECTOR, SUBSCRIPT #=TEMPERATURE, R=RATE OF RISE
- ⊕ DUCT MOUNTED SMOKE DETECTOR
- ⊕ DUCT MOUNTED HEAT DETECTOR
- ⊕ SPRINKLER TAMPER SWITCH
- ⊕ SPRINKLER FLOW SWITCH
- ⊕ FIRE ALARM CONTROL PANEL
- ⊕ FIRE ALARM VOICE PANEL
- ⊕ FIRE ALARM ANNUNCIATOR
- ⊕ FIRE ALARM CONTROL RELAY
- ⊕ ADDRESSABLE MODULE MONITOR
- ⊕ ISOLATION MODULE

DATA/COMM

- ⊕ DATA OUTLET, SUBSCRIPT DENOTES QUANTITY
- ⊕ THERMOSTAT
- ⊕ TELEPHONE OUTLET, SUBSCRIPT DENOTES QUANTITY
- ⊕ COMBINATION DATA/TELEPHONE OUTLET
- ⊕ DATA OUTLET, FLOOR MOUNTED
- ⊕ TELEPHONE OUTLET, FLOOR MOUNTED
- ⊕ ENVIRONMENTAL ALARM POINT
- ⊕ SECURITY ELECTRICAL STRIKE
- ⊕ SECURITY KEY PAD
- ⊕ SECURITY MOTION SENSOR
- ⊕ SECURITY CAMERA
- ⊕ SECURITY CONTROL PANEL
- ⊕ CABO READER

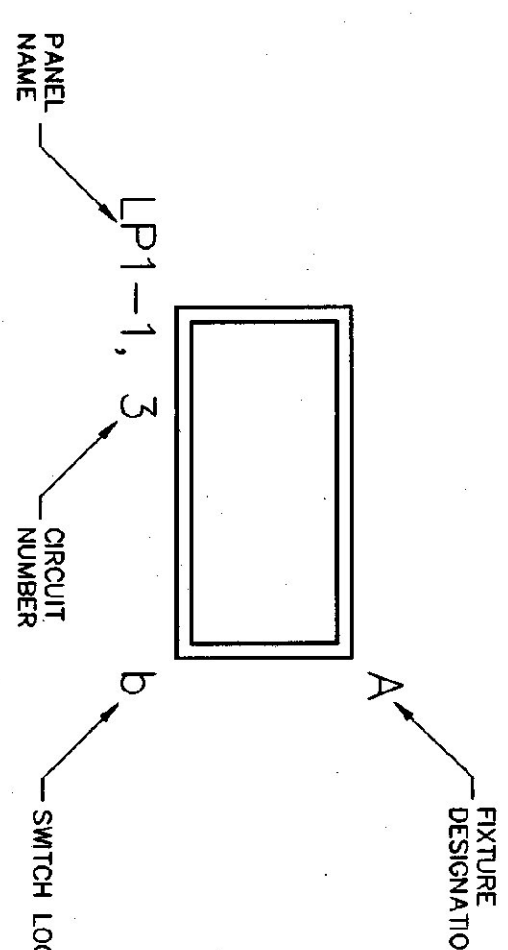
ONE-LINE

- ⊕ NON-FUSED DISCONNECT SWITCH
- ⊕ FUSED DISCONNECT SWITCH
- ⊕ COMBINATION MOTOR STARTER/DISCONNECT SWITCH
- ⊕ MOTOR STARTER
- ⊕ PANELBOARD, MAIN LUG ONLY
- ⊕ PANELBOARD, MAIN CIRCUIT BREAKER
- ⊕ AUTOMATIC TRANSFER SWITCH
- ⊕ CIRCUIT BREAKER
- ⊕ METER
- ⊕ TRANSFORMER
- ⊕ GROUND CONNECTION
- ⊕ GENERATOR
- ⊕ METER W/CONTROL TRANSFORMER
- ⊕ AMMETER W/CONTROL TRANSFORMER
- ⊕ AMMETER W/SELECTOR SWITCH
- ⊕ VOLTMETER W/SELECTOR SWITCH
- ⊕ FUSE

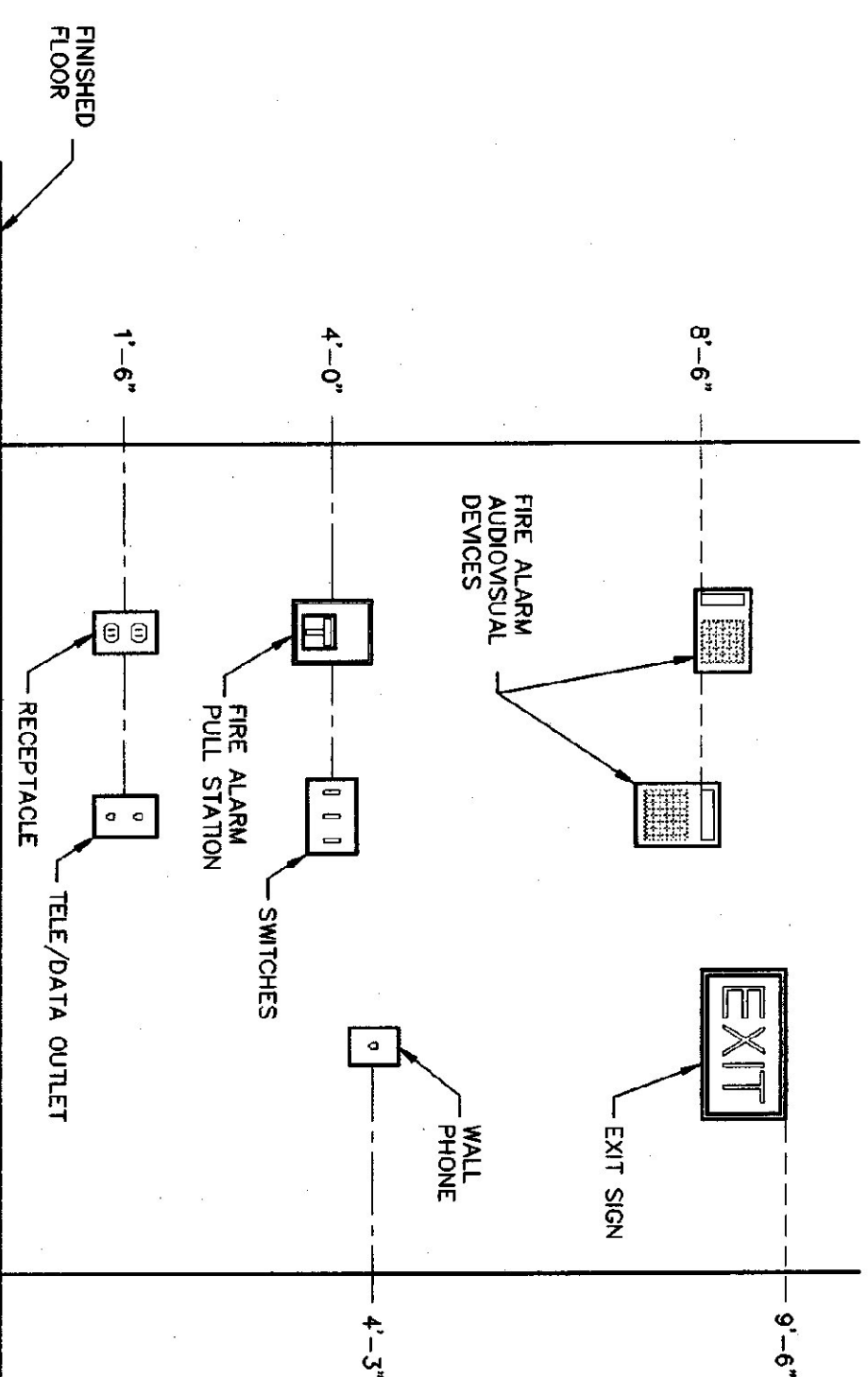
ABBREVIATIONS

- A ABOVE FINISHED FLOOR
- AFG ABOVE FINISHED GRADE
- CB CIRCUIT BREAKER
- CDP CAMPUS DISTRIBUTION FACILITY
- C CEILING
- CONDUIT
- DOWN
- DWG DRAWING
- ENV ENVIRONMENTAL ALARM SYSTEM
- EAS EXHAUST FAN
- EF EXHAUST FAN
- ELEV ELEVATION
- EXIST EXISTING
- FAC FIRE ALARM CONTROL PANEL
- FOF FIBER OPTIC CABLE
- FS FLOOR SWITCH
- GEN GENERATOR
- G GROUND
- IDF INTERMEDIATE DISTRIBUTION FACILITY
- JBOX JUNCTION BOX
- LP MAIN LUG ONLY
- MDP MAIN DISTRIBUTION FACILITY
- MANI MAIN LUG ONLY
- NIC NOT IN CONTRACT
- PHASE POWER PANEL
- PP POWER PANEL
- SW SWITCH
- SEC SECONDARY
- SEP TYPICAL
- TYP TYPICAL
- V VOLTS
- W WIRE
- WP WEATHERPROOF
- WM WIREMOLD

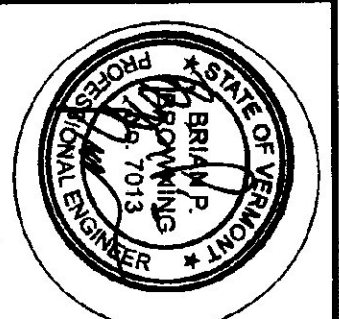
LIGHT FIXTURE DESIGNATION DETAIL



TYPICAL DEVICE MOUNTING HEIGHTS DETAIL
NOT TO SCALE



- NOTES:
1. ALL MOUNTING HEIGHTS SHALL BE MEASURED FROM FINISHED FLOOR TO CENTERLINE OF DEVICE, EXCEPT FIRE ALARM AUDIOVISUAL DEVICES AND EXIT SIGNS.
 2. DEVICES SHALL BE INSTALLED ON A COMMON VERTICAL CENTERLINE WHEREVER POSSIBLE.
 3. ALL DEVICES SHALL BE INSTALLED AT MOUNTING HEIGHTS INDICATED ON THIS DETAIL UNLESS NOTED OTHERWISE. COORDINATE FINAL LOCATIONS OF ALL DEVICES WITH MILLWORK AND ARCHITECTURAL DRAWINGS.



DUNCAN • WISNIEWSKI ARCHITECTURE
255 SOUTH CHAMPLAIN STREET, BURLINGTON, VERMONT 05401 (802) 864-6688

Hallam Associates
60 Farrell Street, Suite 300
St. Burlington, Vermont 05403
(802) 858-4881

WILLISTON INFORMATION CENTER
189 SOUTHBOUND
STATE PROJECT # IM-BLDG (4)

LEGEND AND ABBREVIATIONS

DRAWN:	PROJNO:
LCS	10215
CHECKED:	DATE:
BBB	JAN 16, 2001

E-0sb