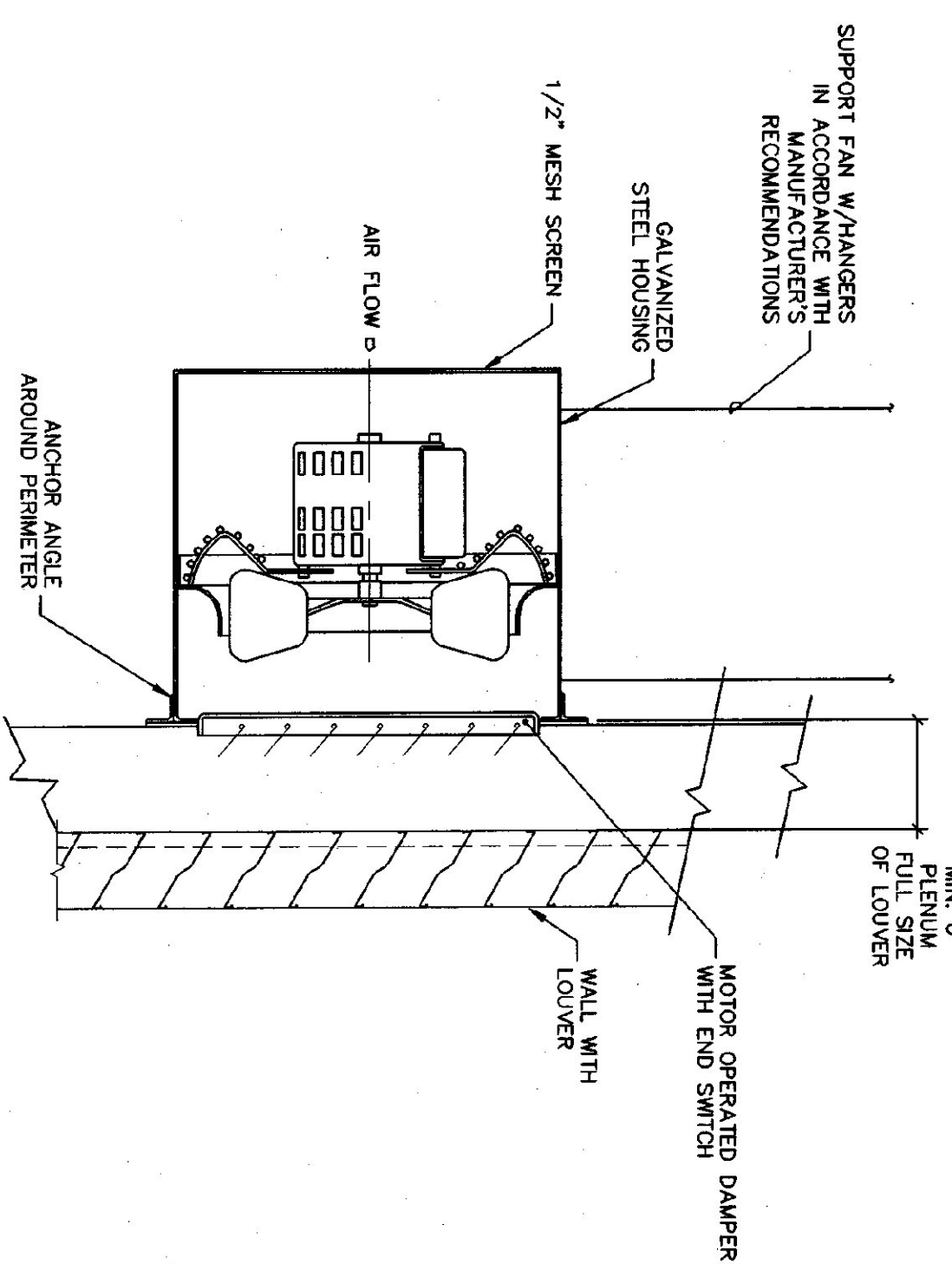
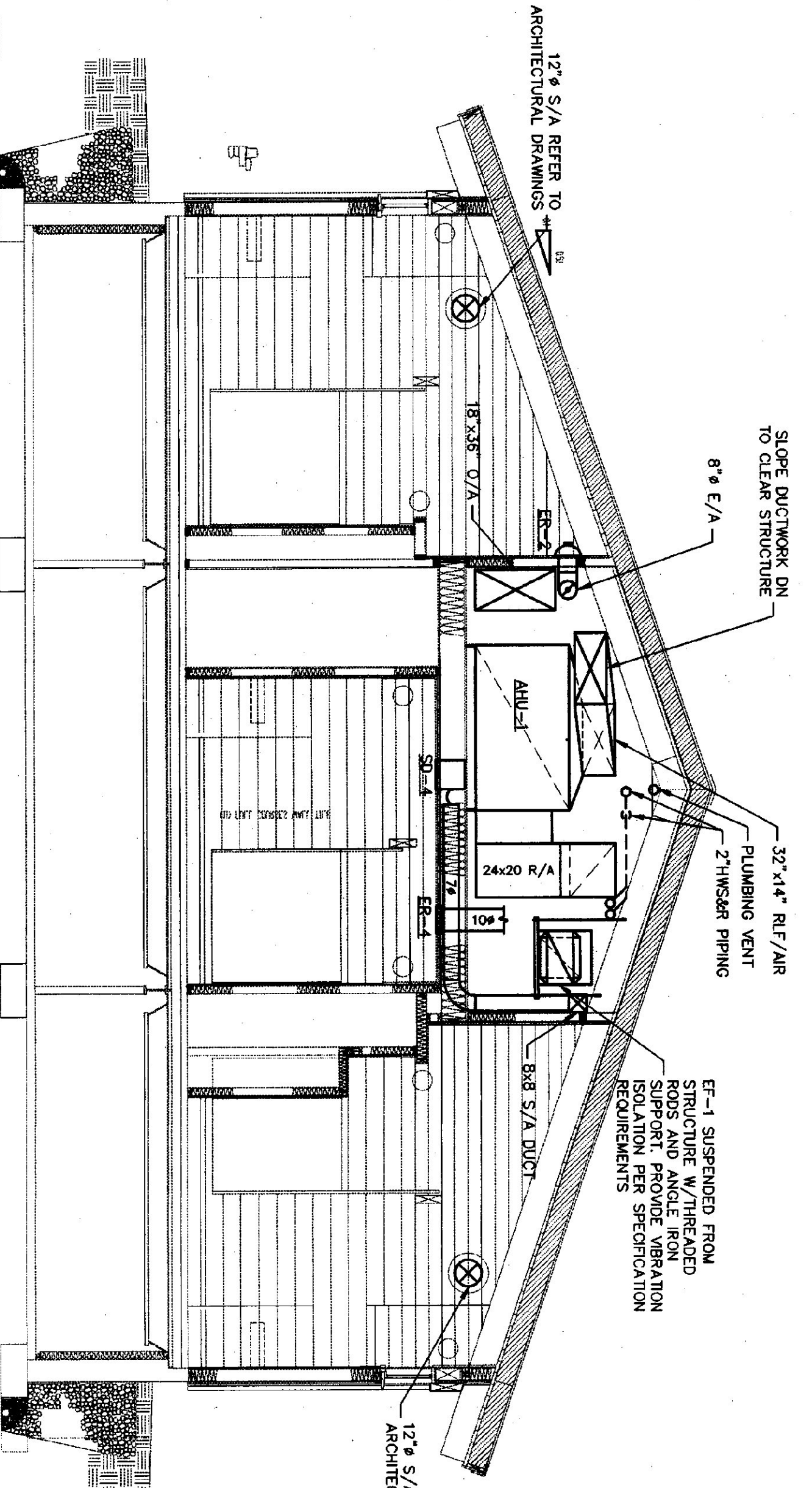


**A** MECHANICAL ROOM SECTION  
SCALE: 1/4"=1'-0"

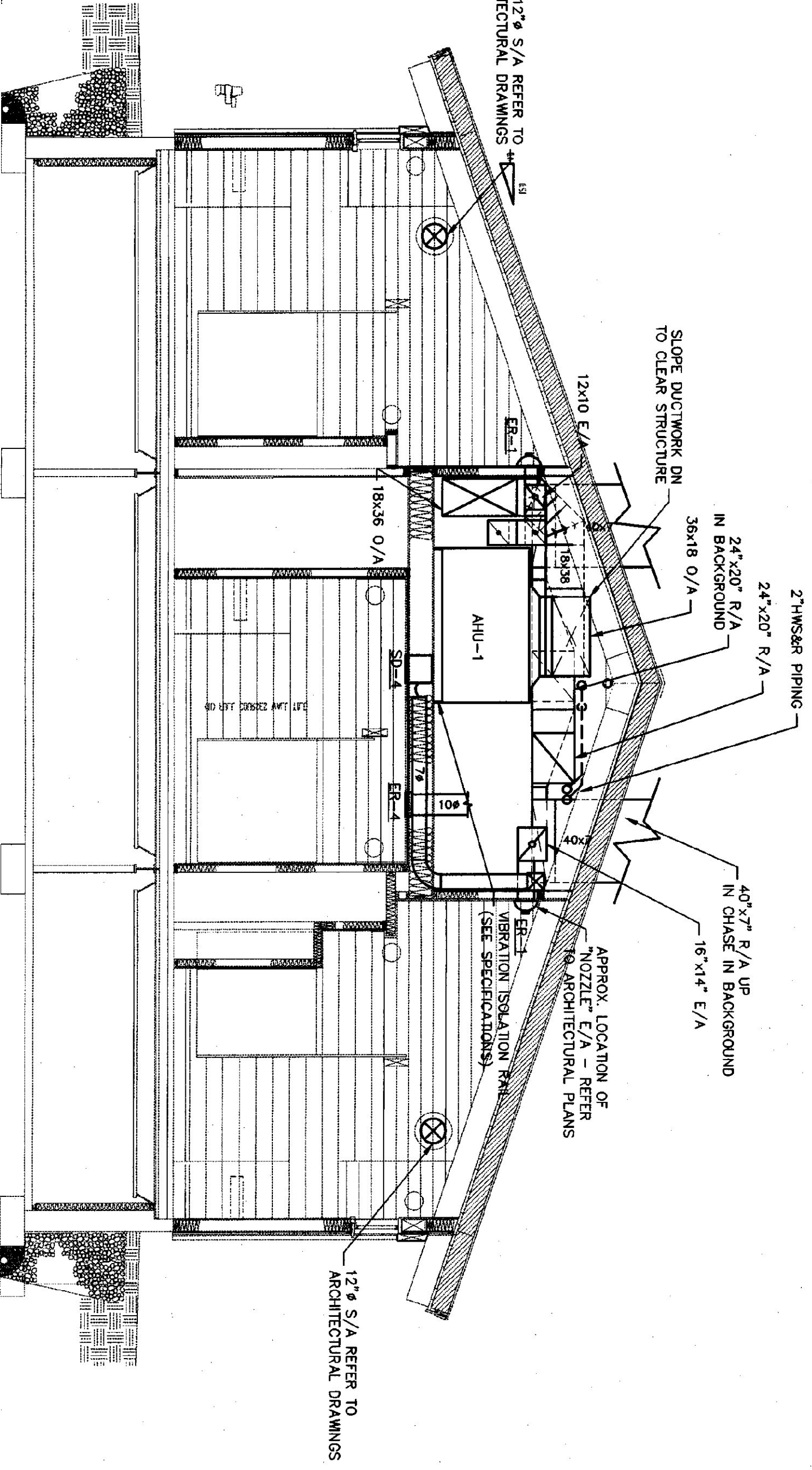
NOTES:  
1. MAINTAIN MIN. 3'-0" WIDE CLEAR SPACE AT TOP OF STAIR FOR ACCESS INTO LOFT MECHANICAL ROOM.



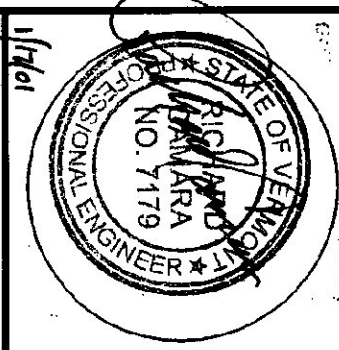
**WALL FAN INSTALLATION DETAIL**  
SCALE: 1-1/2"=1'-0"



**B** MECHANICAL ROOM SECTION  
SCALE: 1/4"=1'-0"



**C** MECHANICAL ROOM SECTION  
SCALE: 1/4"=1'-0"



No.	DATE	REVISION

**DUNCAN • WISNIEWSKI ARCHITECTURE**  
255 SOUTH CHAMPLAIN STREET, BURLINGTON, VERMONT 05401 (802) 864-6690

**Halam Associates**  
60 Farrell Street, Suite 300  
So. Burlington, Vermont 05403  
(802) 855-4891

**WILLISTON INFORMATION CENTER**  
189 SOUTHBOUND  
STATE PROJECT # IM-BLDG (4)

**HVAC BUILDING SECTIONS**

PROJNO: JAMARSHALL  
DATE: 10215  
CHECKED: M COOK  
DATE: JAN 15, 2001

**H-5sb**