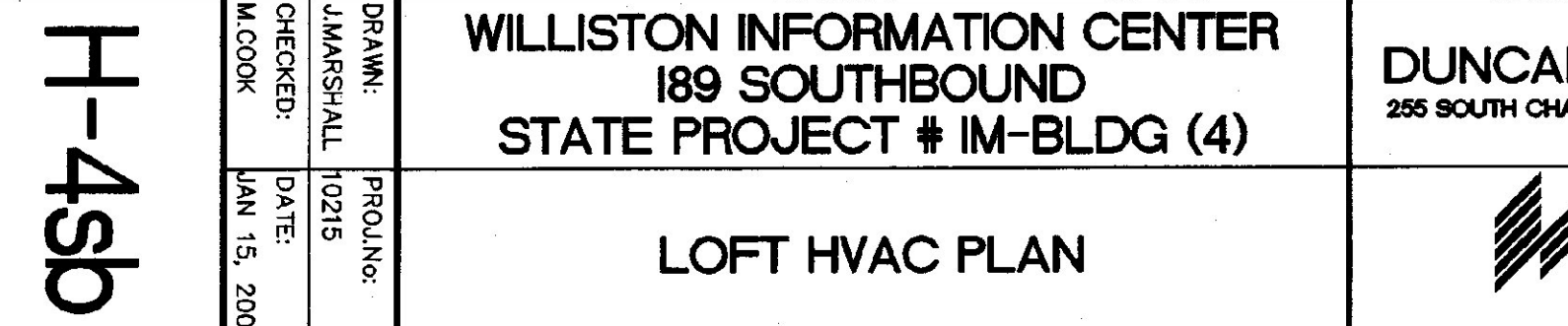
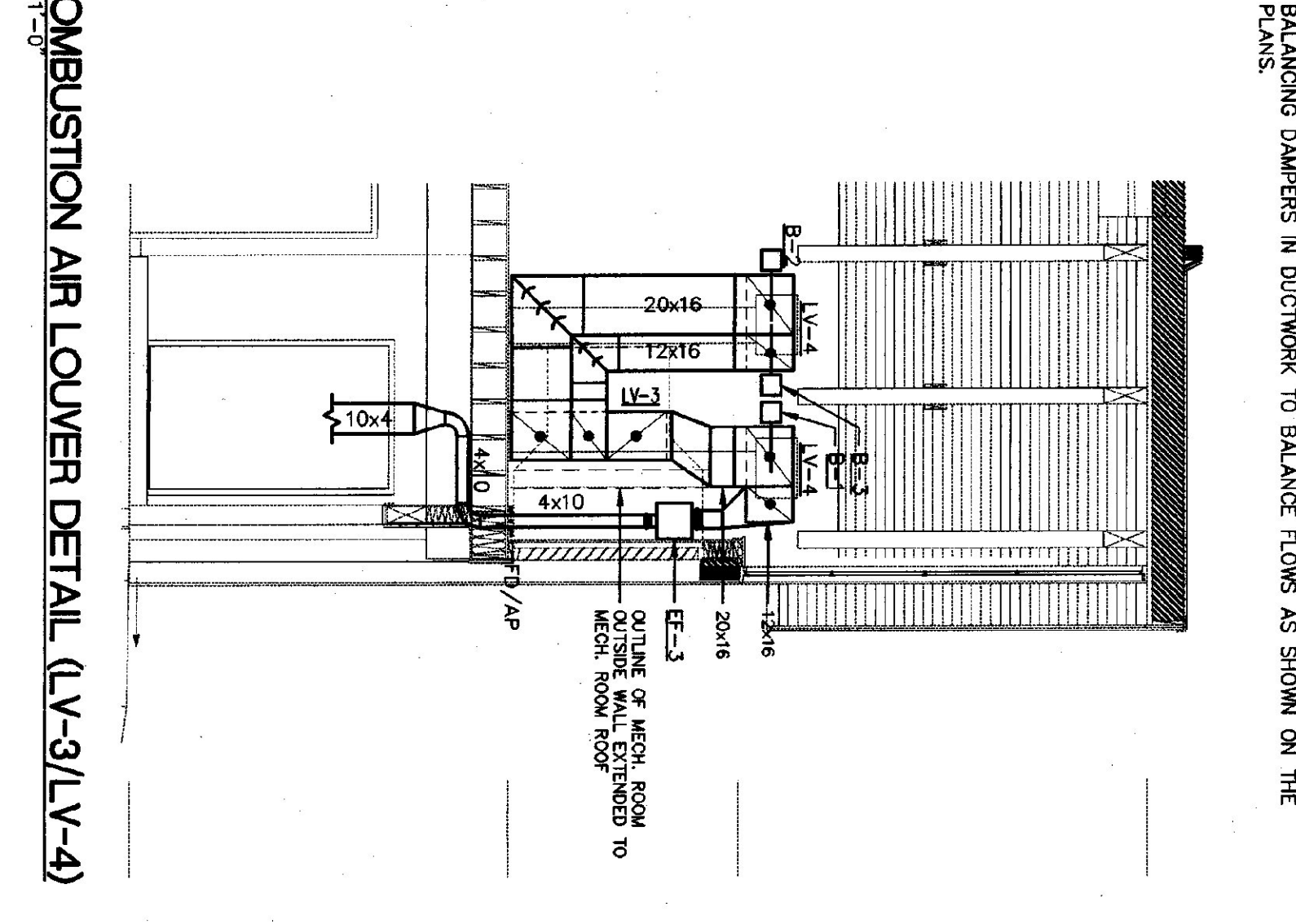


- NOTES:**
- 24x12 E/A DUCT TO RISE, TURN BACK RIGHT TO THE TOPSIDE OF HRU-1, AND ROUTE TO E/A PLENUM BEHIND LV-1.
 - 10" E/A DOWN TO MAIN FLOOR, FOR CONTINUATION SEE DRAWING H-35B.
 - MECHANICAL CONTRACTOR SHALL PROVIDE LINE VOLTAGE THERMOSTATS TO ELECTRICAL CONTRACTOR FOR MOUNTING AND WIRING, M.C. TO FURNISH AND INSTALL LINE VOLTAGE AQUASTAT ON PIPING, E.C. TO WIRE.
 - OFFSET E/A DUCT FROM MAIN TO FLOOR PENETRATION UNDER EF-1.
 - PROVIDE 60"x48"x24" DEEP PLENUM FOR E/A AND RELIEF AIR TO LEAVE THROUGH LV-1.
 - 40x7 R/A UP IN CHASE TO RETURN AIR FROM INFORMATION AREA, COORDINATE INSTALLATION WITH G.C.
 - ROUTE 16"x10" E/A DUCT UP IN BETWEEN CEILING JOISTS, FOLLOWING CONTOUR OF CEILING, REFER TO LOFT STRUCTURAL PLAN FOR COORDINATION PURPOSES.
 - PROVIDE 84"x64"x24" DEEP O/A PLENUM FOR LV-2.
 - 10x4 E/A DOWN TO FUEL OIL ROOM, SEE DRAWING H-35B FOR CONTINUATION.
 - EF-3 MOUNTED SUCH THAT E/A DUCTWORK PASSES OVER TOP OF C/A DUCTWORK, SEE SECTION D THIS DRAWING.
 - MAINTAIN MINIMUM 3'-0" WIDE CLEAR SPACE AT TOP OF STAIR FOR ACCESS INTO LOFT MECHANICAL ROOM.
 - LOCATION OF HW COIL CONTROL VALVE PIPING TRAIN ABOVE UNIT ADJACENT TO RELIEF AIR AND O/A DUCT CONNECTIONS, SEE PIPING SCHEMATICS DRAWING H-658B.
 - 24x24 E/A PLENUM ATTACHED TO UNUSED PORTION OF E/A LOUVER (LV-1) ABOVE HVAC E/A PLENUM.
 - MOUNT EF-5 TO 24x24 PLENUM ABOVE HVAC E/A PLENUM, SEE WALL FAN DETAIL, DRAWING H-55B.
 - TRANSITION TO 20x12 DOUBLE WALL DUCTWORK DOWNSTREAM OF VERTICAL H-35B, (REFER TO MULTI-ZONE DUCT DETAIL) FOR CONTINUATION SEE DRAWING H-35B.
 - TRANSITION FROM SINGLE WALL TO DOUBLE WALL DUCTWORK AT POINT SHOWN.
 - DOUBLE WALL R/A UP TO 40x7 RISER, RISER DUCT IS SINGLE WALL.
 - DOUBLE WALL R/A DUCT DN TO AHU-1 R/A PLENUM.
 - (3) COMBUSTION AIR DAMPERS, SEE DETAILS D AND E THIS DRAWING.
 - CENTER "NOZZLE" DIFFUSERS BETWEEN EXPOSED BEAMS.
 - CONNECT 8"x8" GRAMM SPACE E/A DUCT TO E/A AND RELIEF AIR PLENUM, PROVIDE BACKDRAFT DAMPER AT POINT OF CONNECTION.

- FOR CONTINUATION OF S/A DUCTWORK SEE MAIN FLOOR PLAN, DRAWING H-35B.
- (2) REFRIGERANT SUCTION AND (2) REFRIGERANT LIQUID LINES UP FROM GRAMM SPACE THROUGH MAIN FLOOR, SEE DRAWING H-35B FOR CONTINUATION, ROUTE PIPING BELOW DUCTWORK AND CONNECT TO DX COIL PER DETAIL, THIS DRAWING.
- 7" S/A DUCT DOWN TO MAIN FLOOR, FOR CONTINUATION SEE DRAWING H-35B.
- 8"x8" E/A DUCT DOWN TO MAIN FLOOR, FOR CONTINUATION OF DUCTWORK, SEE DRAWING H-35B.
- 27HWS&R DOWN TO MECHANICAL ROOM, SEE DRAWING H-35B FOR CONTINUATION, ROUTE PIPING ALIGNED VERTICALLY AS SHOWN.
- 12" BOILER FLUE DOWN TO MECHANICAL ROOM, FOR CONTINUATION SEE DRAWING H-35B, OFFSET FLUE (ANGLE GREATER THAN 45°) AND RUN HORIZONTALLY AT ROOF LINE, TERMINATE THROUGH ROOF BEHIND COPULA, SEE SECTION A DRAWING H-35B FOR ADDITIONAL CLARIFICATION.
- 1-1/2" FUEL OIL VENT DOWN TO FUEL OIL STORAGE TANKS, FOR CONTINUATION SEE DRAWING H-35B.
- 1-1/2" FUEL OIL VENT UP THROUGH ROOF, TERMINATE MINIMUM OF 18" ABOVE ROOF WITH WINDSHIELD CAP.
- 3/4" HWS&R DOWN TO MAIN FLOOR, FOR CONTINUATION SEE DRAWING H-35B.



H-4SB

WILLISTON INFORMATION CENTER
189 SOUTHBOUND
STATE PROJECT # IM-BLDG (4)

LOFT HVAC PLAN

DRAWN: PROJINC
JMARSHALL 10/21/00
CHECKED: DATE: JAN 15, 2001
M COOK

DUNCAN • WISNIEWSKI ARCHITECTURE
255 SOUTH CHAMPLAIN STREET, BURLINGTON, VERMONT 05401 (802) 864-6663

Hallam Associates
60 Farrell Street, Suite 300
St. Burlington, Vermont 05403
(802) 658-4891

No.	DATE	REVISION

REGISTERED PROFESSIONAL ENGINEER
STATE OF VERMONT
NO. 7178
RICHARD A. HALLAM