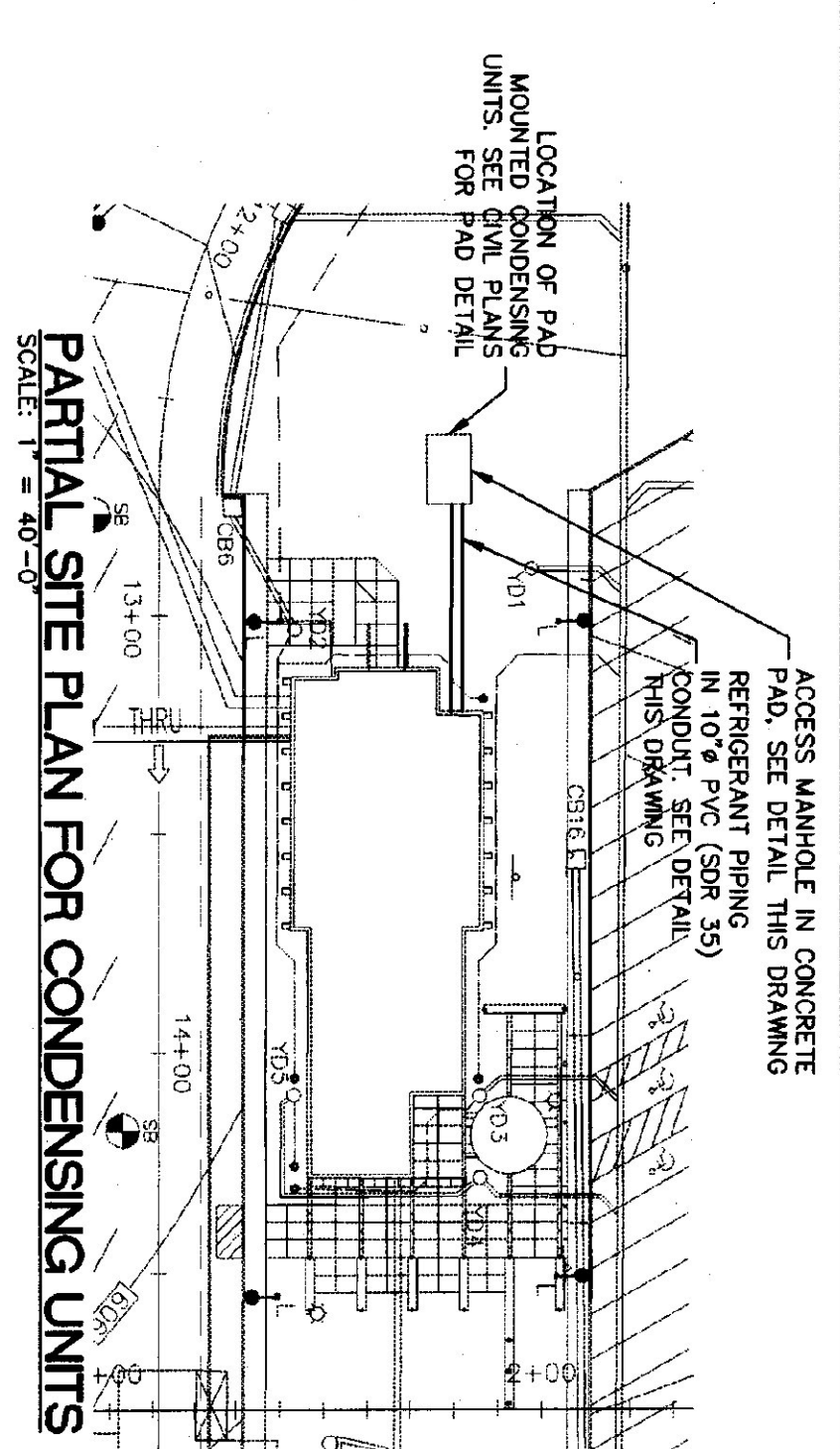
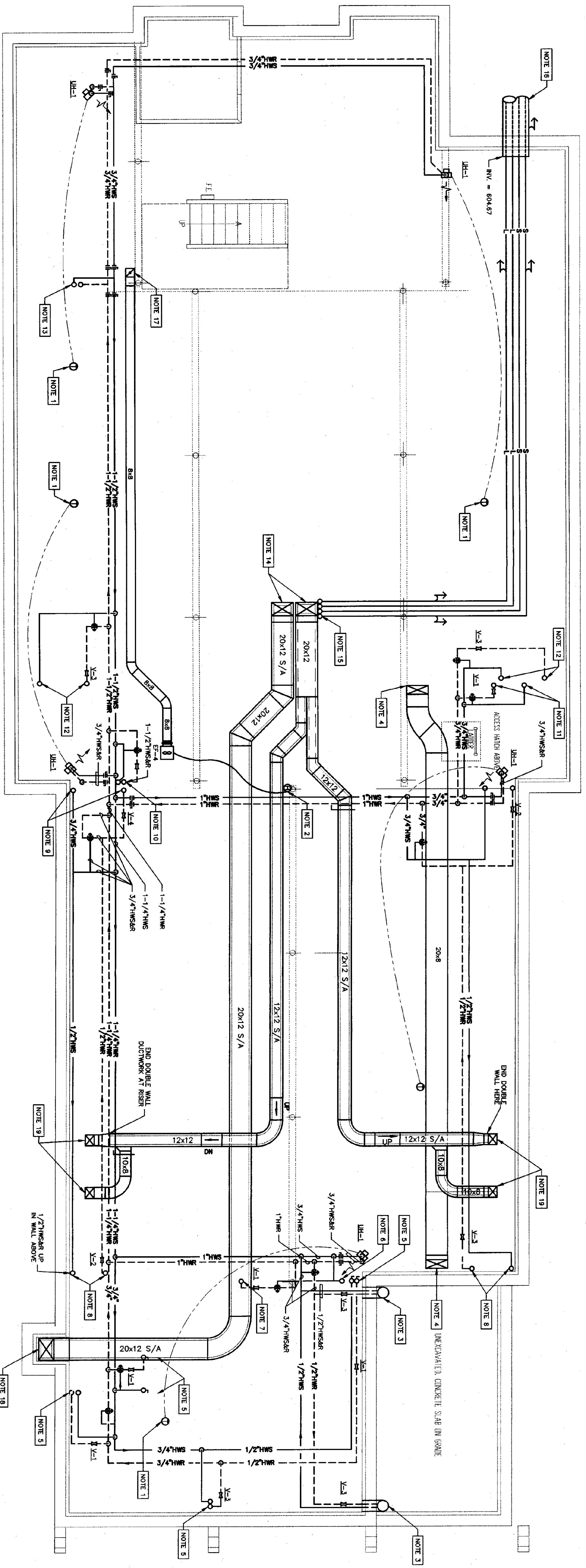


- NOTES:
1. PROVIDE MIN. 6" COMPACTED CRUSHED STONE BENEATH ACCESS MANHOLE.
 2. SEAL WATER-TIGHT REFRIGERANT LINE PENETRATIONS INTO ACCESS MANHOLE.

PLAN OF ACCU LAYOUT AT CONCRETE PAD
SCALE: 1/4"=1'-0"



PARTIAL SITE PLAN FOR CONDENSING UNITS
SCALE: 1/4"=1'-0"



CRAWL SPACE HVAC PLAN
SCALE: 1/4"=1'-0"

- NOTES:
1. MECHANICAL CONTRACTOR TO PROVIDE LINE VOLTAGE THERMOSTATS TO ELECTRICAL CONTRACTOR FOR MOUNTING AND WIRING.
 2. MECHANICAL CONTRACTOR TO FURNISH AND INSTALL LINE VOLTAGE ADJUSTABLE ON PIPING, ELECTRICAL CONTRACTOR TO WIRE.
 3. 6" PVC CONDUIT FROM CRAWL SPACE BELOW SLAB TO VESTIBULE. SEE DETAIL B ON DRAWING H-35B. ROUTE 1/2" W/WSR THROUGH CONDUIT.
 4. 20x8 S/A DUCT UP FOR CONTINUATION SEE DRAWING H-35B.
 5. 1/2" W/WSR UP TO HR-1. SEE DRAWING H-35B FOR CONTINUATION.
 6. 1/2" W/WSR UP TO HR-4 (IN C/POLA). SEE DRAWING H-35B FOR CONTINUATION.
 7. 1/2" W/WSR UP TO HR-4 (IN C/POLA). SEE DRAWING H-35B FOR CONTINUATION.
 8. 1/2" W/WSR UP TO HR-3. SEE DRAWING H-35B FOR CONTINUATION.
 9. 3/4" W/WSR UP TO HR-3. SEE DRAWING H-35B FOR CONTINUATION.
 10. 1/2" W/WSR UP TO HR-2. SEE DRAWING H-35B FOR CONTINUATION.
 11. 1/2" W/WSR UP TO HR-5. SEE DRAWING H-35B FOR CONTINUATION.
 12. 1/2" W/WSR UP TO HR-6. SEE DRAWING H-35B FOR CONTINUATION.
 13. 2" W/WSR UP TO MECHANICAL ROOM. SEE DRAWING H-35B FOR CONTINUATION.
 14. (2) 20x12 S/A DUCTS UP INTO CHASE ABOVE. SEE DRAWING H-35B FOR CONTINUATION.
 15. REFRIGERANT LINES (2) SUCTION AND (2) LIQUID UP TO CHASE ABOVE. SEE DRAWING H-35B FOR CONTINUATION. PROVIDE SUCTIONS TRAPS AT BASE OF RISER PER ACCU MANUFACTURER'S RECOMMENDATIONS.
 16. REFRIGERANT PIPING IN 10" PVC (SOR 35) CONDUIT FROM FOUNDATION WALL TO ACCESS MANHOLE AT CONDENSING UNITS. SEE PARTIAL SITE PLAN (THIS DRAWING) FOR CONTINUATION.
 17. 8x8 E/A DUCT UP TO MECHANICAL ROOM. SEE DRAWING H-35B FOR CONTINUATION. PROVIDE FIRE DAMPER AT FLOOR PENETRATION.
 18. 20x12 S/A DUCT UP INTO CHASE ABOVE. SEE DRAWING H-35B FOR CONTINUATION.
 19. 10x8 S/A DUCT UP INTO BENCH PLENUM ABOVE. SEE DRAWING H-35B FOR CONTINUATION. COORDINATE EXACT LOCATIONS OF OPENINGS WITH GENERAL CONTRACTOR.

H-2sb

WILLISTON INFORMATION CENTER
189 SOUTHBOUND
STATE PROJECT # IM-BLDG (4)

CRAWL SPACE HVAC PLAN

DUNCAN • WISNIEWSKI ARCHITECTURE
255 SOUTH CHAMPLAIN STREET, BURLINGTON, VERMONT 05401 (802) 864-6003

Hallam Associates
60 Farrell Street, Suite 300
So. Burlington, Vermont 05403
(802) 658-4891

No.	DATE	REVISION

