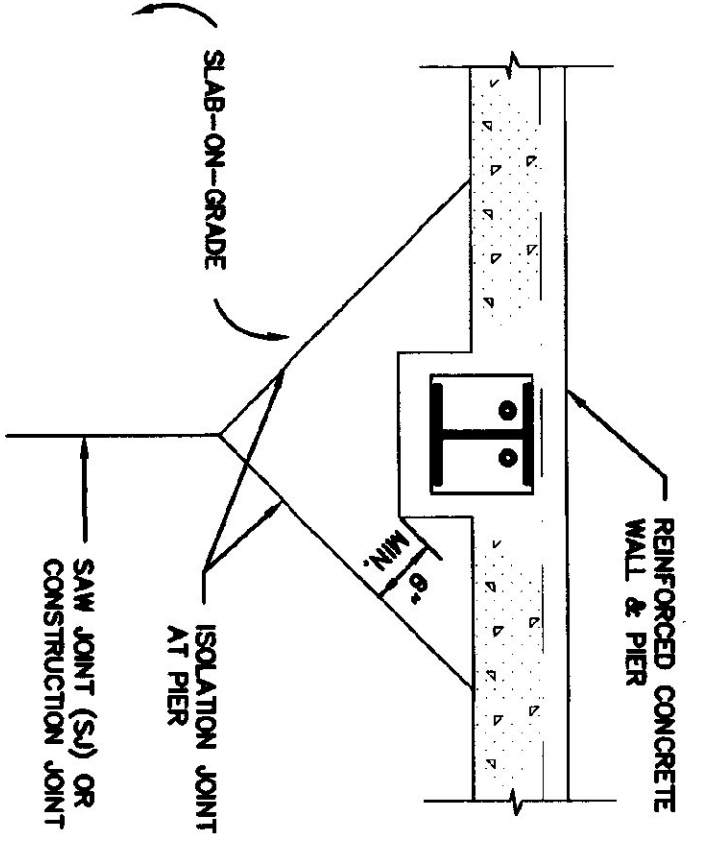
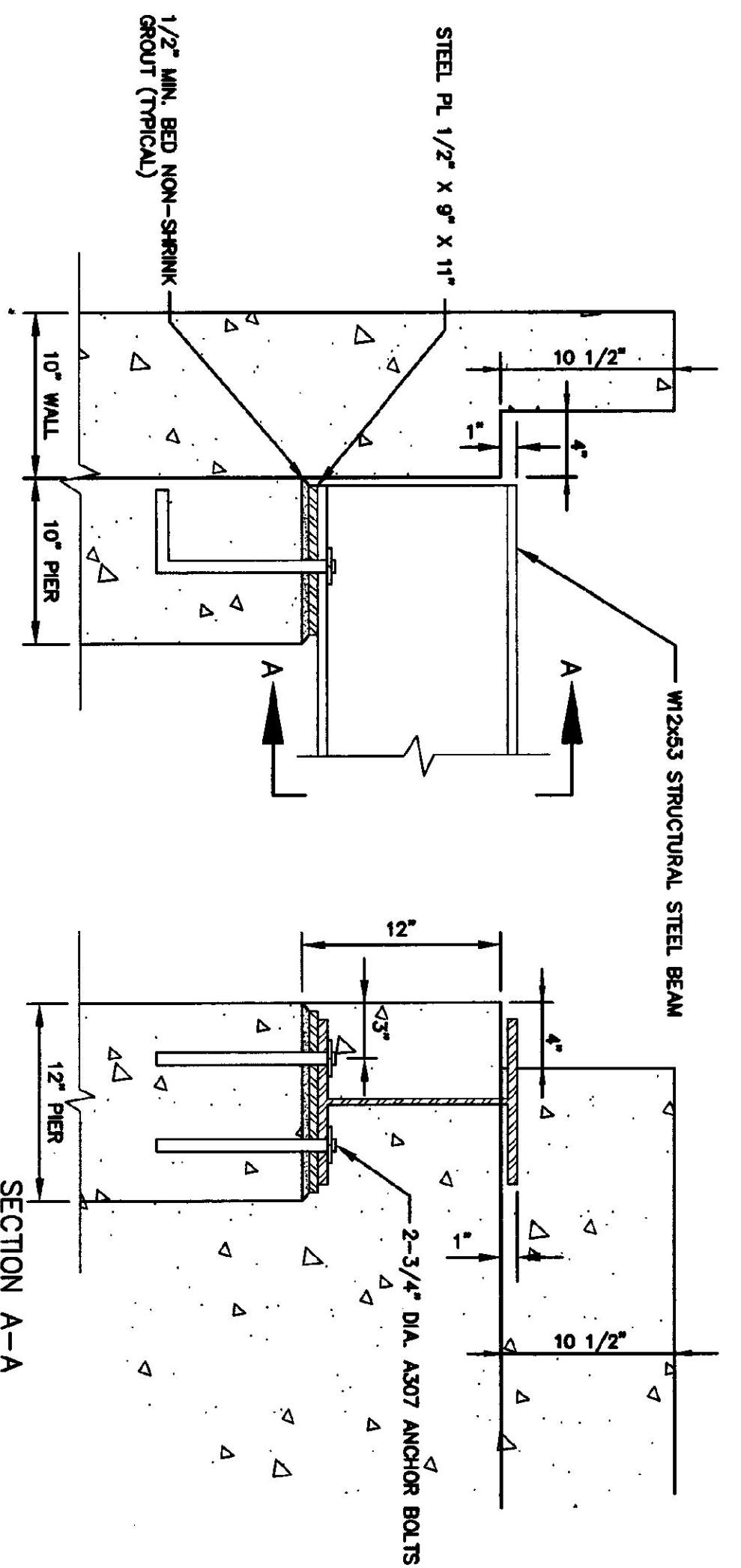
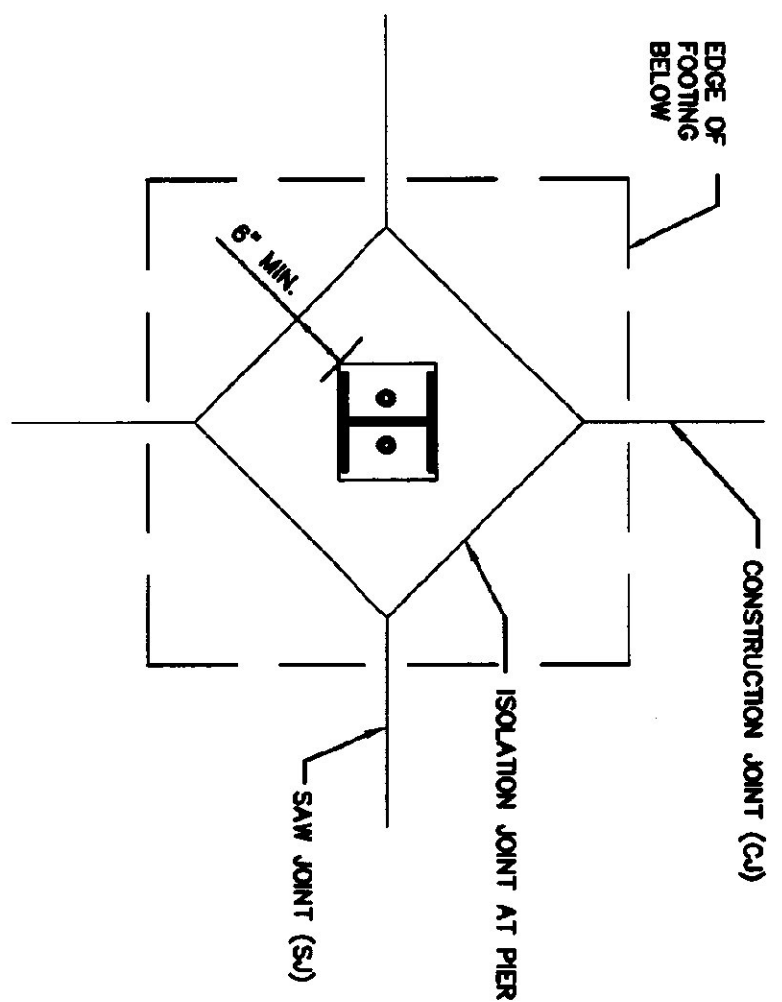


1 TYPICAL SLAB-ON GRADE SAW JOINT  
S-3 N.T.S.

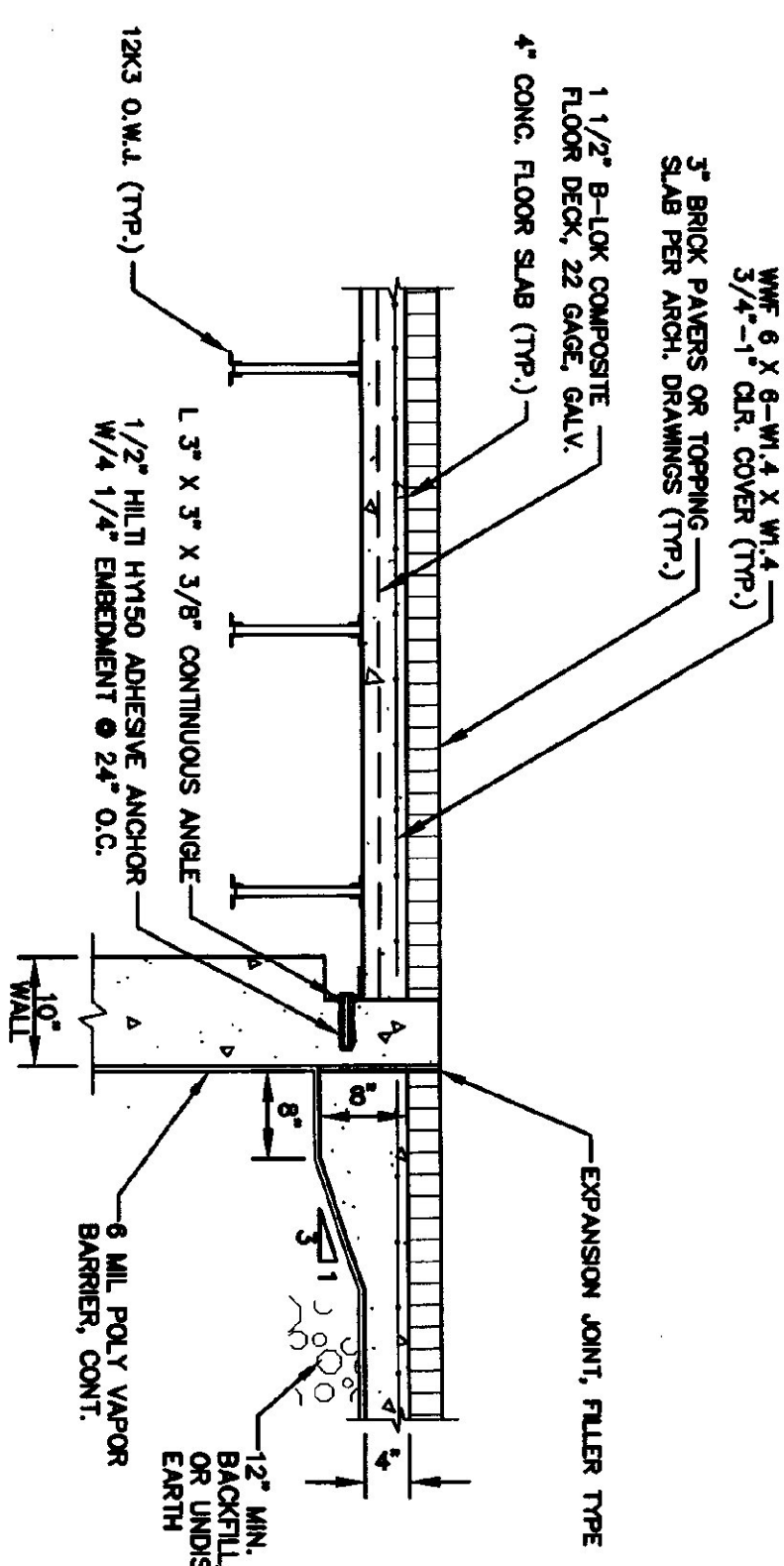
- NOTES:
1. JOINT MUST BE SAWS AS SOON AS THE SURFACE IS FIRM ENOUGH SO THAT IT WILL NOT BE TORN OR DAMAGED BY THE BLADE USUALLY WITHIN 4 TO 12 HOURS AFTER THE CONCRETE HAS HARDENED.
  2. JOINT WILL BE UNFILLED UNLESS CONDITIONS ARE MET (UNTIL APPROVED GRANULAR BACKFILL, POLYMER SEALANT) OR SUBJECT TO WHEEL LOADS (USE APPROVED RIGID OR SEMI-RIGID FILLER WITH DIAMETER SHOWN A-SCALE HARDNESS OF APPROXIMATELY 80 CONFORMING TO ASTM D2240 & D678).
  3. SLABS MUST BE CONTINUOUSLY CURED WITH WATER AND AN APPROVED SOAKING AGENT FOR A MINIMUM OF 7 DAYS.



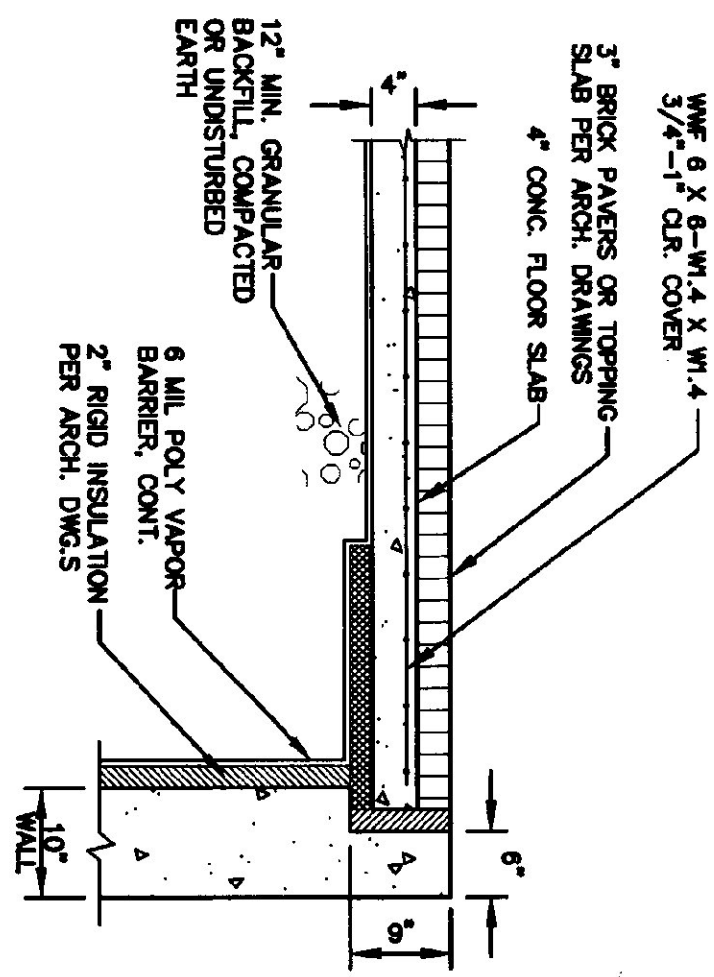
2 TYPICAL ISOLATION JOINTS  
S-3 N.T.S.



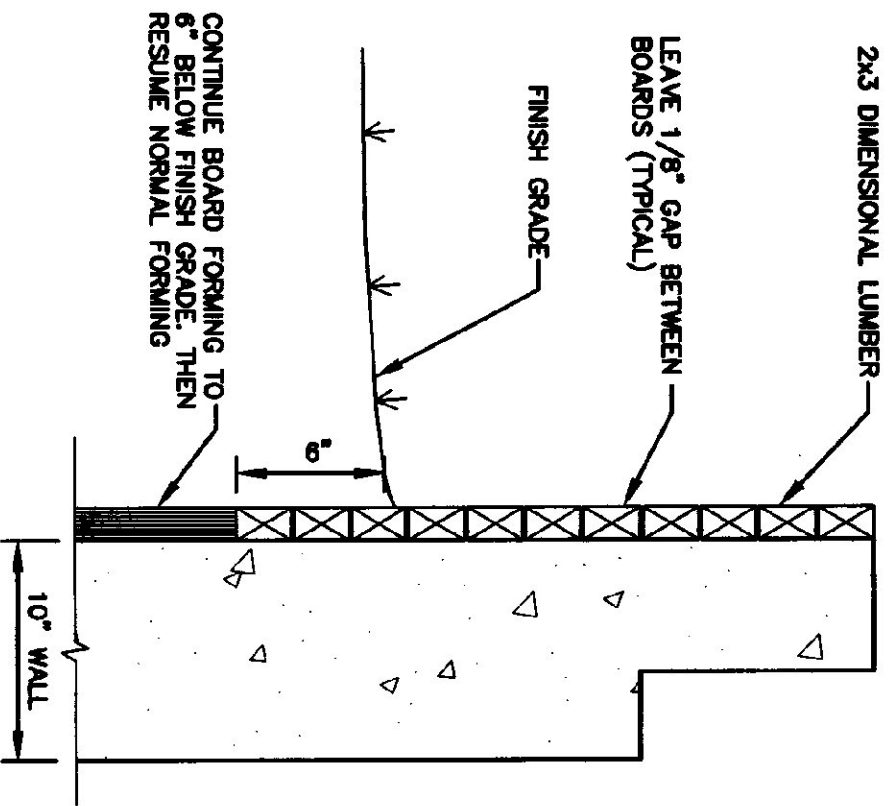
3 TYPICAL BEAM ANCHOR DETAIL  
S-3 1 1/2\"/>



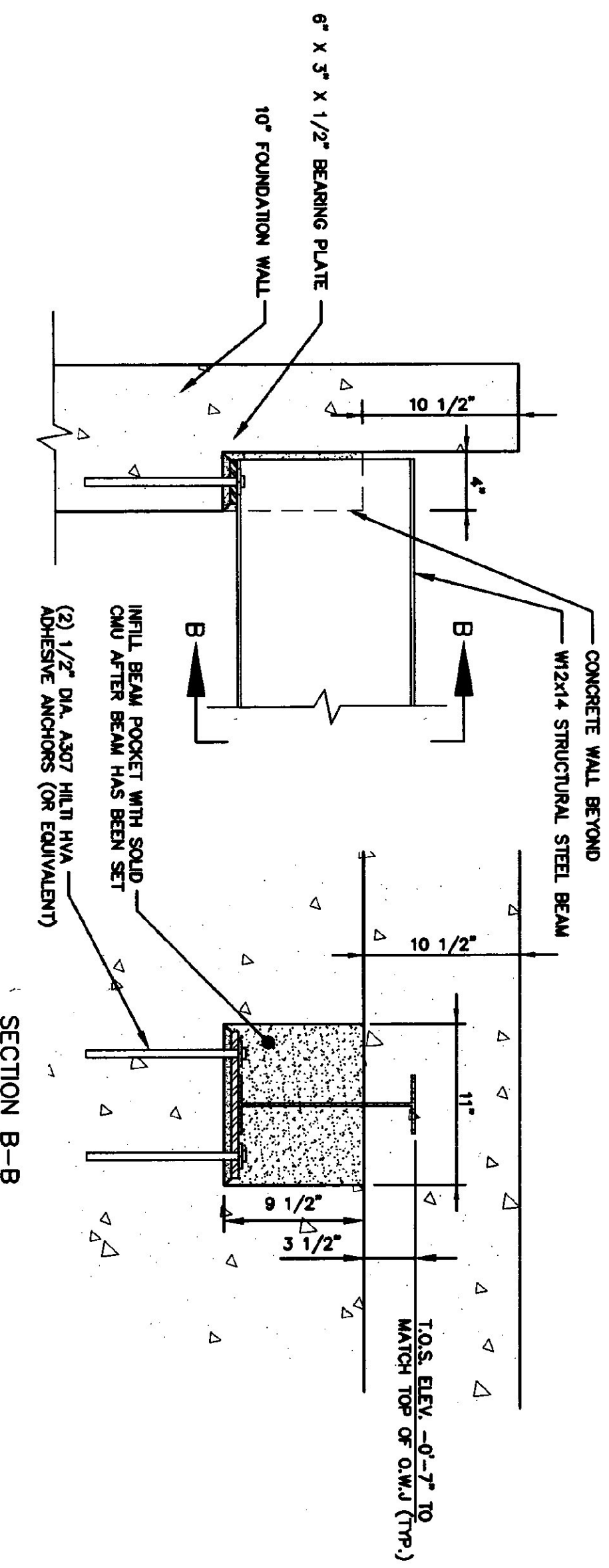
4 INTERIOR WALL @ VESTIBULE  
S-3 3/4\"/>



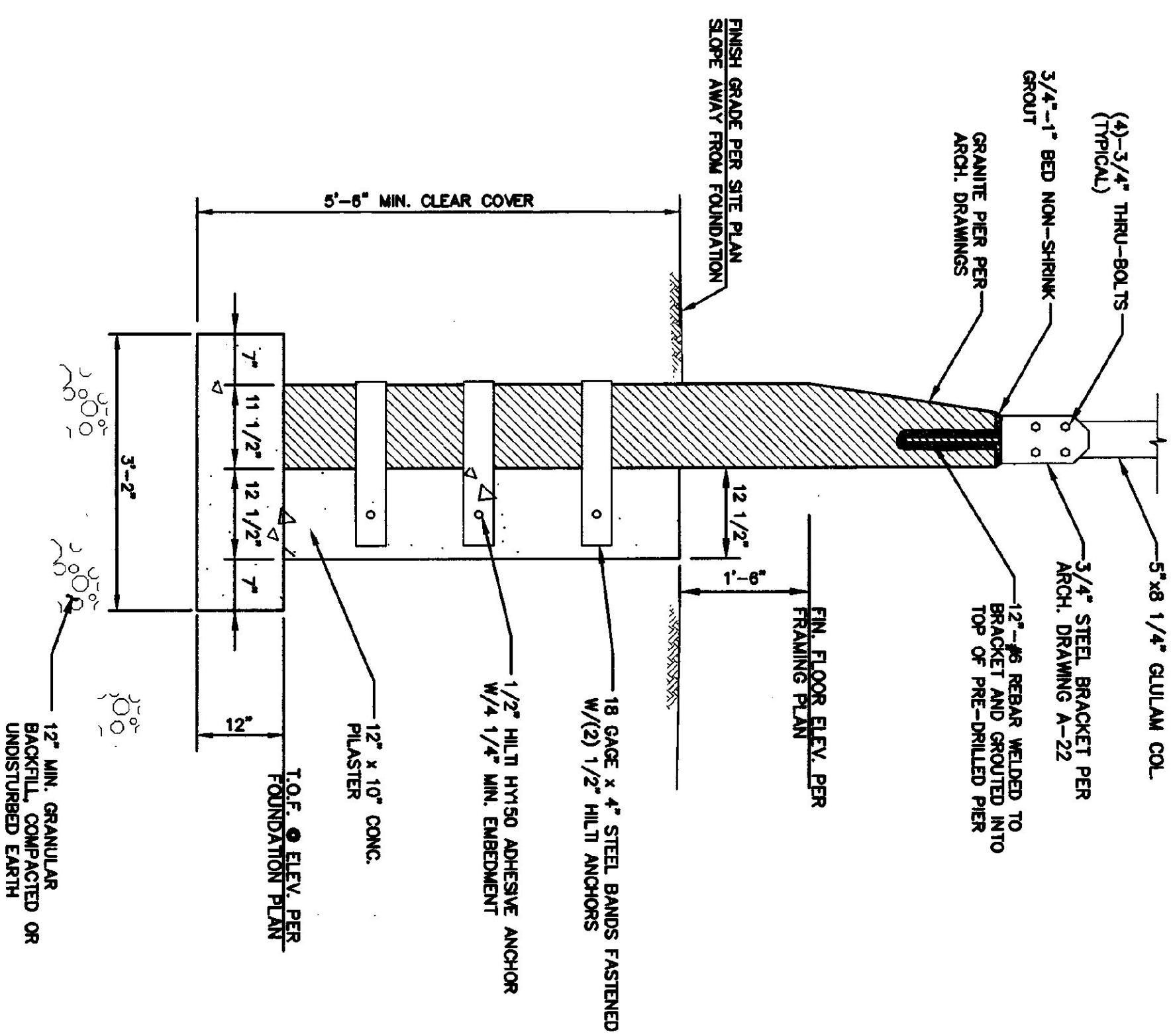
5 EXTERIOR WALL @ VESTIBULE  
S-3 3/4\"/>



6 TYPICAL BOARD FORM DETAIL  
S-3 N.T.S.



7 TYPICAL BEAM POCKET DETAIL  
S-3 1 1/2\"/>



8 STONE PIER DETAIL  
S-3 3/4\"/>

REVISIONS	BY

COPYRIGHT © 2001  
CHAMPLAIN CONSULTING ENGINEERS  
ALL RIGHTS RESERVED

CHAMPLAIN CONSULTING ENGINEERS

85 PRIM ROAD, P.O. BOX 453  
COLCHESTER, VERMONT 05446  
(802) 863-8060  
(802) 864-1878 FAX



INTERSTATE 89 SOUTHBOUND  
WILLISTON INFORMATION CENTER  
FOUNDATION DETAILS

WILLISTON

PROJECT # IM-BLDG(4)

VERMONT

DRAWN  
COE  
CHECKED  
CIB  
SCALE  
AS NOTED  
DATE  
01/16/01  
JOB NO.  
S3114  
SHEET  
8

S3sb