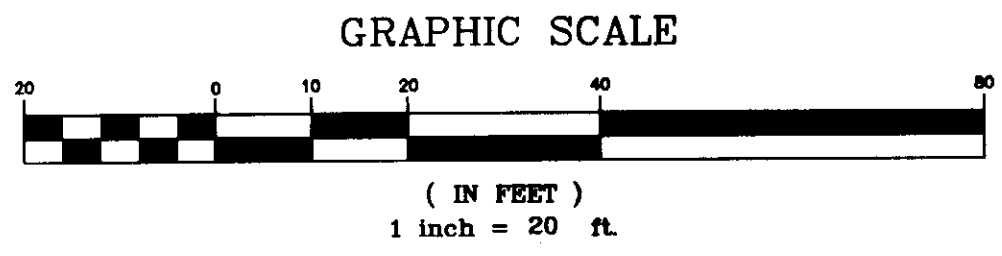
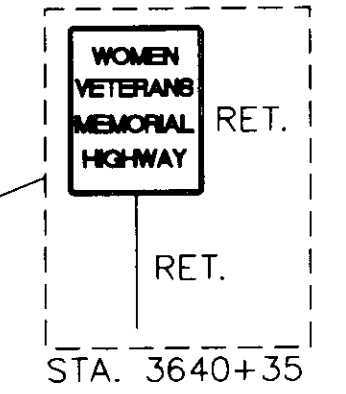
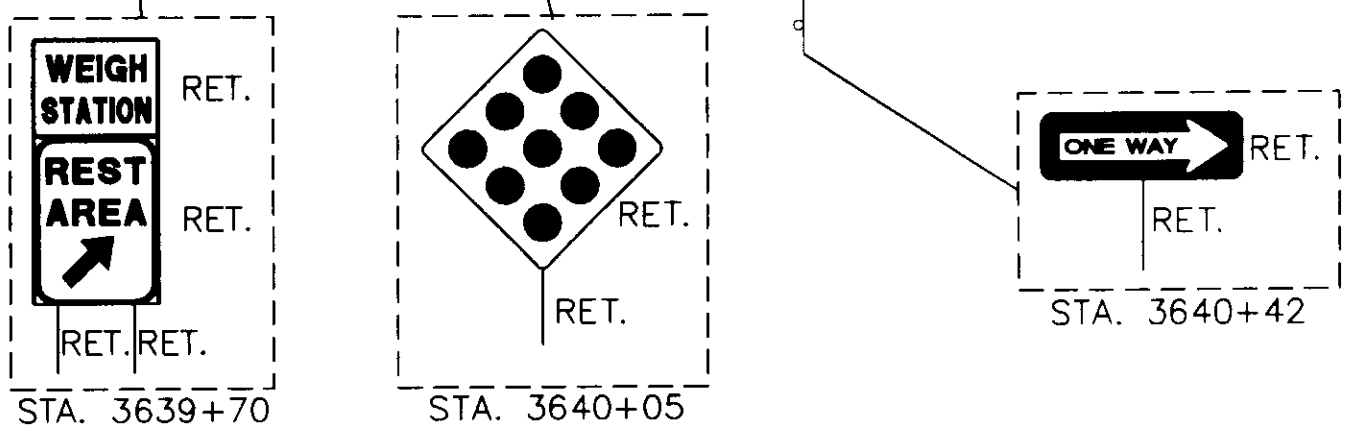
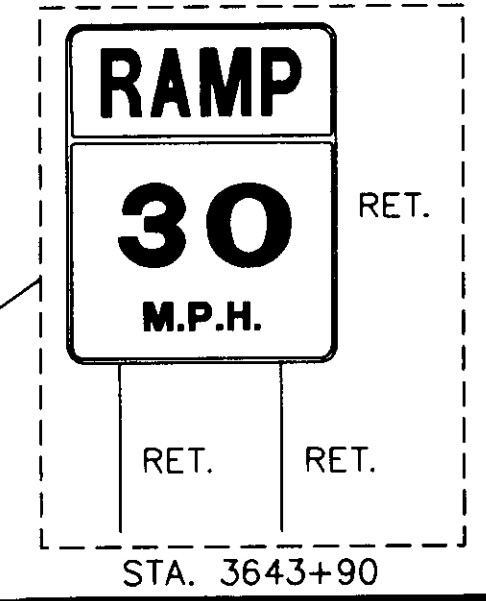
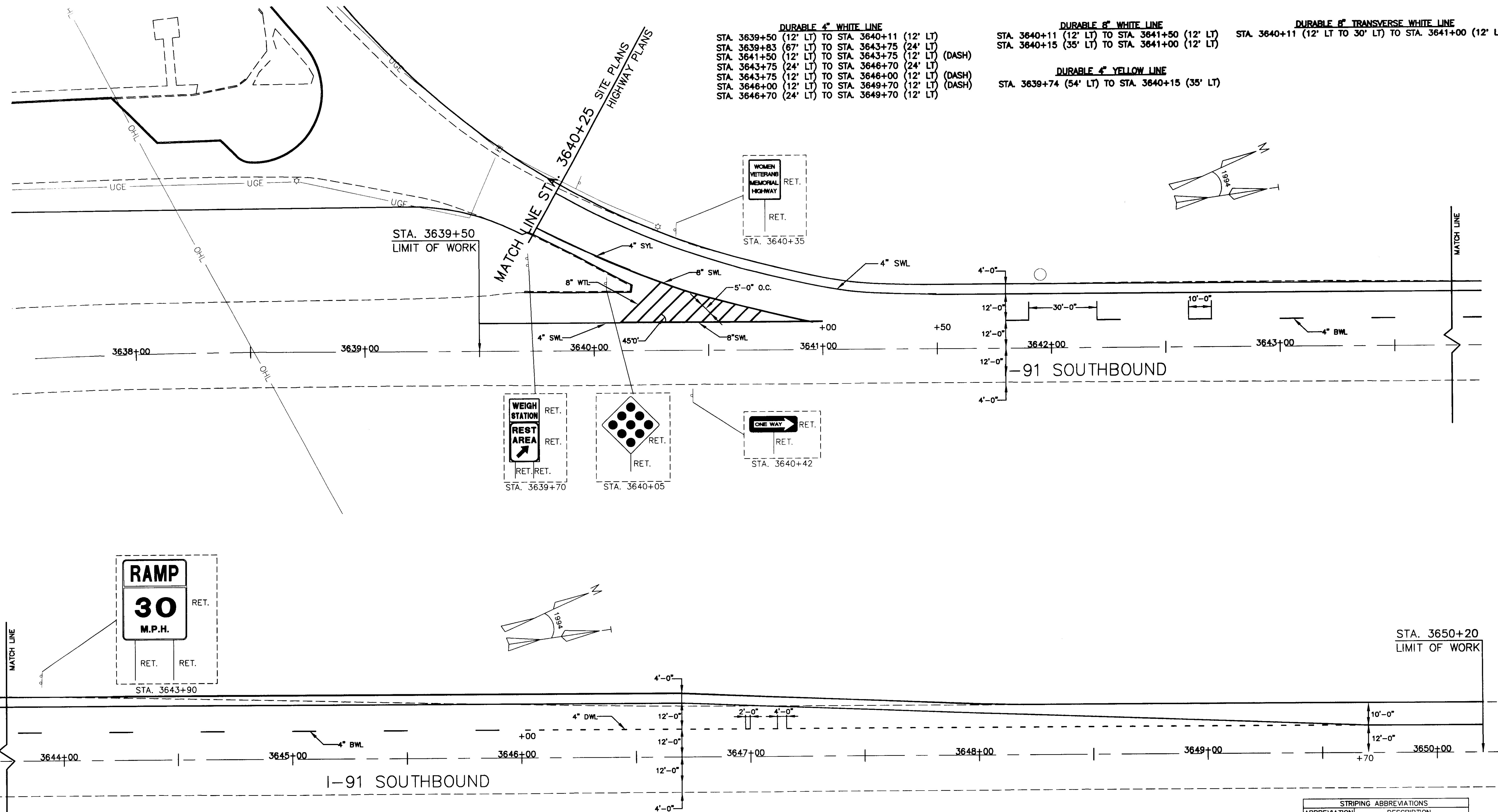


DURABLE 4" WHITE LINE
 STA. 3639+50 (12' LT) TO STA. 3640+11 (12' LT)
 STA. 3639+83 (67' LT) TO STA. 3643+75 (24' LT)
 STA. 3641+50 (12' LT) TO STA. 3643+75 (12' LT) (DASH)
 STA. 3643+75 (24' LT) TO STA. 3646+70 (24' LT)
 STA. 3643+75 (12' LT) TO STA. 3646+00 (12' LT) (DASH)
 STA. 3646+00 (12' LT) TO STA. 3649+70 (12' LT) (DASH)
 STA. 3646+70 (24' LT) TO STA. 3649+70 (12' LT)

DURABLE 8" WHITE LINE
 STA. 3640+11 (12' LT) TO STA. 3641+50 (12' LT)
 STA. 3640+15 (35' LT) TO STA. 3641+00 (12' LT)

DURABLE 8" TRANSVERSE WHITE LINE
 STA. 3640+11 (12' LT TO 30' LT) TO STA. 3641+00 (12' LT)

DURABLE 4" YELLOW LINE
 STA. 3639+74 (54' LT) TO STA. 3640+15 (35' LT)



STRIPING ABBREVIATIONS	
ABBREVIATION	DESCRIPTION
DWL	4" DOTTED WHITE LINE
SWL	4" SOLID WHITE LINE
SYL	4" SOLID YELLOW LINE
BWL	4" BROKEN WHITE LINE
WTL	8" WHITE TRANSVERSE LINE

ALL PAVEMENT MARKINGS SHALL BE THERMOPLASTIC.

N·B·F
 Nimitz·Berryhill·Figiel
 ARCHITECTS P.C.
 24 1/2 Center Street, Rutland, Vermont 05701

Steven J. Banik, P.E.
 STRUCTURAL ENGINEER
 Cuttingsville, Vermont 05738

DuBois & King inc.
 Highway Design
 Site Engineering
 Mechanical and
 Electrical Engineers

HARTFORD, VT. I-91
 INFORMATION CENTERS

SOUTHBOUND DECEL
 SIGNING, LIGHTING, &
 PAVEMENT MARKING

FINAL PLANS

R31

2/15/96

2-15-96
 C:\DATA\142666\5\SUBSTRIP.FR1.FPD.23.12.44.35.1996