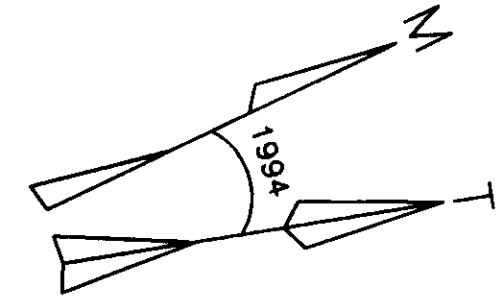


TBM 112
HIGH POINT
ON LEDGE
568.14

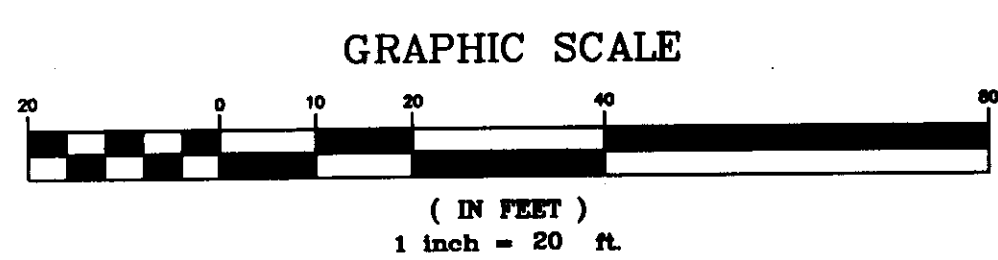
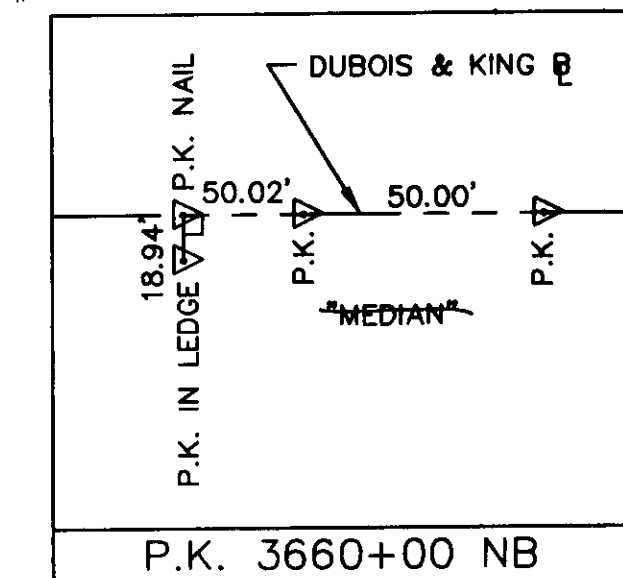
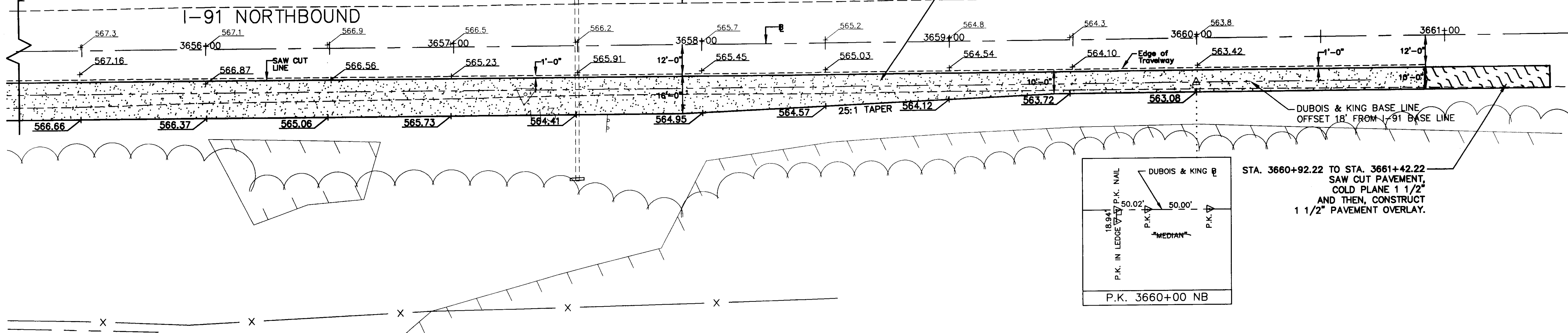


STA. 3657+92.22
END FULL WIDTH ACCELERATION LANE (BACK)
BEGIN ACCELERATION LANE TAPER (AHEAD)

STA. 3660+92.22
END ACCELERATION LANE TAPER

STA. 3651+50 TO STA. 3660+92.22
REMOVE PAVEMENT AND NON-SELECT MATERIAL AND
CONSTRUCT NEW SUB-BASE MATERIAL AND PAVEMENT.
SEE TYPICAL SECTION AND CROSS SECTIONS.

STA. 3660+92.22 TO STA. 3661+42.22
SAW CUT PAVEMENT,
COLD PLANE 1 1/2"
AND THEN, CONSTRUCT
1 1/2" PAVEMENT OVERLAY.



3-15-96
 C:\DATA\VT\2668\5\NACBRAD.F1, No. 15 09 22 28 1996

<p>N·B·F Nimtz·Berryhill·Figiel ARCHITECTS P.C. 24 1/2 Center Street, Rutland, Vermont 05701</p>	<p>Steven J. Banik, P.E. STRUCTURAL ENGINEER Cuttingsville, Vermont 05738</p>	<p>DuBois & King inc. ·Highway Design ·Site Engineering ·Mechanical and ·Electrical Engineers</p>	<p>HARTFORD, VT. I-91 INFORMATION CENTERS</p>	<p>NORTHBOUND ACCEL. GRADING PLAN</p>	<p>FINAL PLANS 2/15/96</p>	<p>R28</p>
---	---	--	---	---	--------------------------------	------------