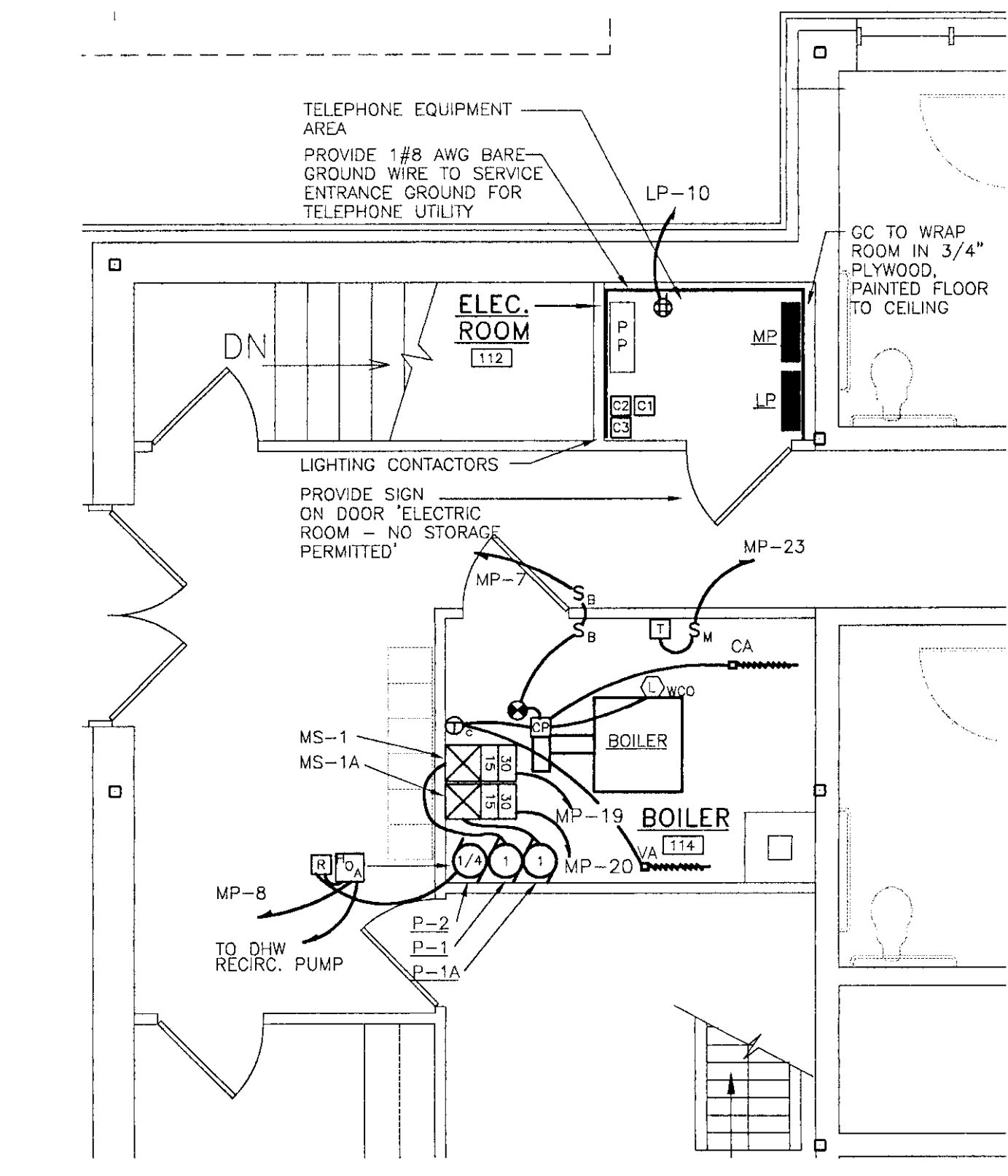
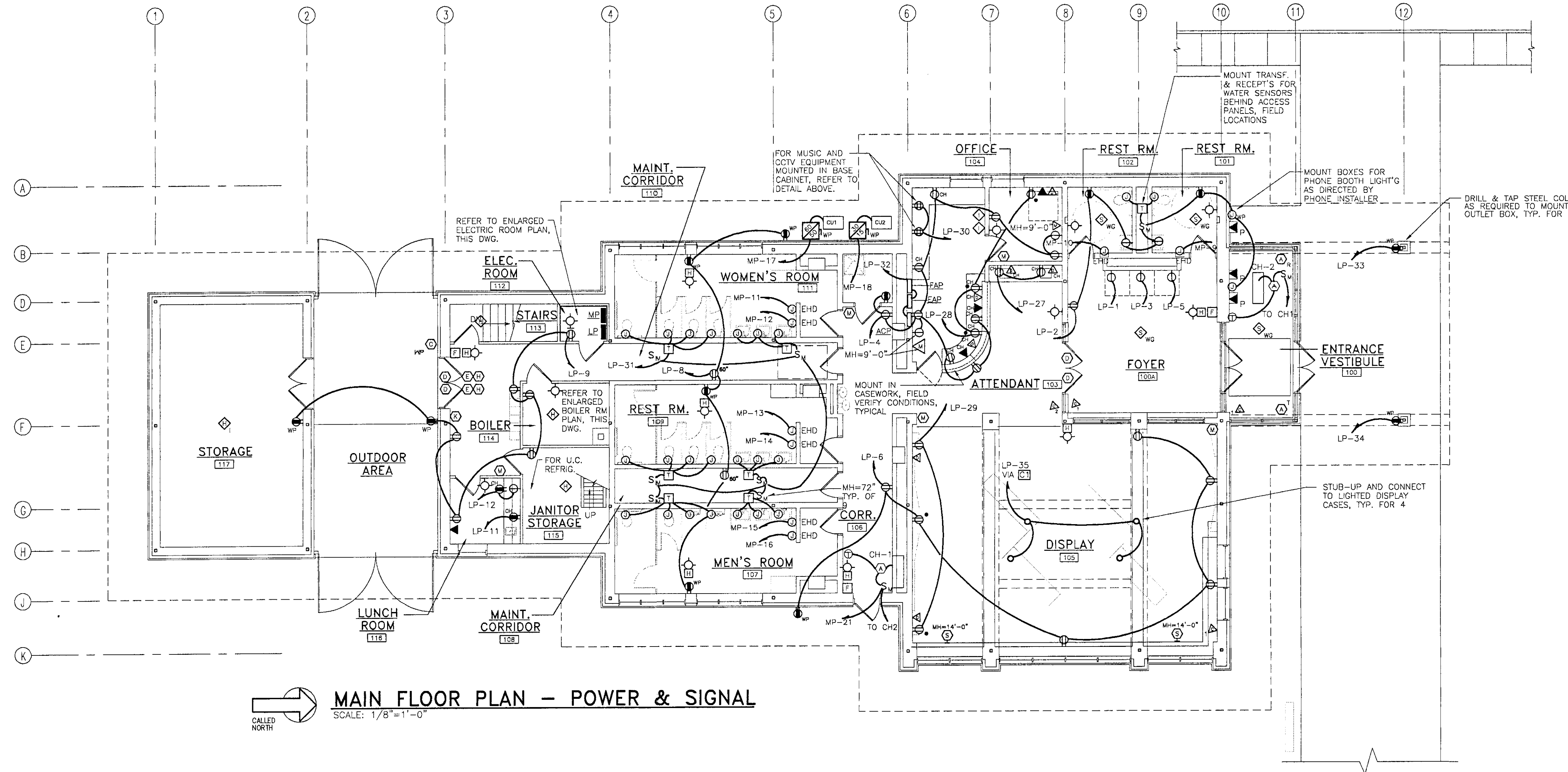


PANEL SCHEDULE									
PANEL MP	MANUF.: GE	MAIN-SIZE: 400A	TYPE: TJD-CIRC.BRKR.		VOLTS: 120/240	PHASE: 1		WIRE: 3	
42 POLES	BUS: 400A(AL)	BRANCHES-	CIRCUIT BREAKER		22000 A.I.C.	MOUNTING: SURFACE		TYPE: THHQB, THQD	
SIZE: 20"X6"DX42"H		MOUNTING: BOLT-ON		GROUND BUS, COVER, DOOR & LOCK					
BRANCH CIRCUITS									
No.	Breakers Pole Amp.	Ph.	Con. Kw.	Load Hp.	Equipment	Cond.	Wire		
1	2 40	1	1.5&1		AHU-1	3/4"	2 # 8 2 #10N&G		
2	2 20	1	1@1/2		AHU-2	1/2"	3 #12 1 #12G		
3	2 40	1	2@1.5		HRU-1	3/4"	2 # 8 2 #10N&G		
4	2 50	1			WELL PUMP	1"	2 # 6 1 #10G		
5	1 20	1	1/4		EF-1, UH-3	1/2"	2 #12 1 #12G		
6	1 20	1	0.2		UH-1,2	1/2"	2 #12 1 #12G		
7, 8	1 20	1	3@1/4		BURNER, P2, RECIRC. PUMP	1/2"	2 #12 1 #12G		
9-16	1 30	1	19.2		HAND DRYERS	MC	2 #10 1 #10G		
17	2 60	1	7.4		CU-1	1"	2 # 4 1 #9G		
18	2 20	1	2.1		CU-2	1/2"	2 #12 1 #12G		
19,20	2 20	1	2@1		P1, P1A	1/2"	3 #12 1 #12G		
21, 23	1 20	1	0.9		CH-1, SUMP PUMP, TEMP. CONTROL	1/2"	2 #12 1 #12G		
24	2 60	1			SURGE SUPPRESSOR	1"	3 # 6 1 #8G		
25	2				SPACE				
26-29	1				SPARES				
30	2 125	1	20.0		WASTE WATER TREATMENT	2"	3 #2/0 1 #8G		

NOTE: SUBSPEED BREAKER #30 REQUIRED 4 SPACES FOR SINGLE BRANCH MOUNTING.

PANEL SCHEDULE									
PANEL LP	MANUF.: GE	MAIN-SIZE: 200A	TYPE: TJD-CIRC.BRKR.		VOLTS: 120/240	PHASE: 1		WIRE: 3	
42 POLES	BUS: 225A	BRANCHES-	CIRCUIT BREAKER		22000 A.I.C.	MOUNTING: SURFACE		TYPE: THHQB	
SIZE: 20"X6"DX42"H		MOUNTING: BOLT-ON		GROUND BUS, COVER, DOOR & LOCK					
BRANCH CIRCUITS									
No.	Breakers Pole Amp.	Ph.	Con. Kw.	Load Hp.	Equipment	Cond.	Wire		
1-10	1 20	1	10.4		RECEPTACLE	MC	2 #12 1 #12G		
11, 12	1 20	1	3.0		SM. APPLIANCE	MC	2 #12 1 #12G		
14	1 20	1	0.6		ATTIC LIGHTING AND RECEPTACLE	MC	2 #12 1 #12G		
13, 15	1 20	1	2.6		EXTERIOR BUILDING LIGHTING	MC	2 #12 1 #12G		
16	1 20	1	0.1		EMS	MC	2 #12 2 #12G&IG		
17-24	1 20	1	8.8		LIGHTING	MC	2 #12 1 #12G		
25, 26	2 20	1	5.8		EXTERIOR SITE LIGHTING	1"	2 # 8 1 #10G		
27-29	1 20	1			COMPUTER OUTLETS	MC	2 #12 2 #12G&IG		
30	1 20	1			MUSIC, CCTV	MC	2 #12 1 #12G		
31	1 20	1	0.6		PLUMBING FIXTURES	MC	2 #12 1 #12G		
32	1 20	1	0.2		FIRE ALARM, ENTRY ALARM, & ACCESS CONTROL PANELS	MC	2 #12 1 #12G		
33, 34	1 20	1	0.4		EXT. RECEPT.	1/2"	2 #12 1 #12G		
35	1 20	1			LIGHTED DISPLAY CASES	MC	2 #12 1 #12G		
36	2 60	1			SURGE SUPPRESSOR	1"	2 #12 1 #12G		
37	2				SPACE				
38, 39	1 20				SPARES				

- LP NOTES:  
 1. PROVIDE ISOLATED GROUND BUS ACCESSORY.  
 2. CIRCUITS LP-16 (EMS) AND LP-27 TO 29 (COMPUTERS) SHALL HAVE AN ISOLATED GROUND CONDUCTOR. MARK CONDUCTOR ACCORDINGLY.  
 3. PROVIDE RED LOCK-ON CLIP FOR CIRCUIT BREAKER 32.



- NOTES:  
 1. REFER TO SITE PLAN FOR EXACT ROUTING OF UTILITY SERVICE CONDUITS

<b>N·B·F</b> Nimtze • Berryhill • Figiel ARCHITECTS P.C. 24 1/2 Center Street Rutland, Vermont 0 5 7 0 1	Steven J. Banik, P.E. STRUCTURAL ENGINEER Cuttingsville, Vermont 0 5 7 3 8	<b>LANE ASSOCIATES</b> CONSULTING ENGINEERS, P.C. Rutland, Vermont 0 5 7 0 1	 Charles F. Lane	<b>DuBois &amp; King</b> Engineering • Planning Development • Management Rutland, Vermont 0 5 7 0 1	Southbound I-91 <b>Hartford</b> Travel and Information Center Hartford, Vermont	<b>POWER &amp; SIGNAL</b> PLAN-MAIN FLOOR	10/31/00 Date	CLIENT REVIEW Issued For	Project: <b>Hartford</b>
									Project Number: <b>0029</b>
<b>E2</b>							Sheet # <b>25</b> Of <b>28</b>		