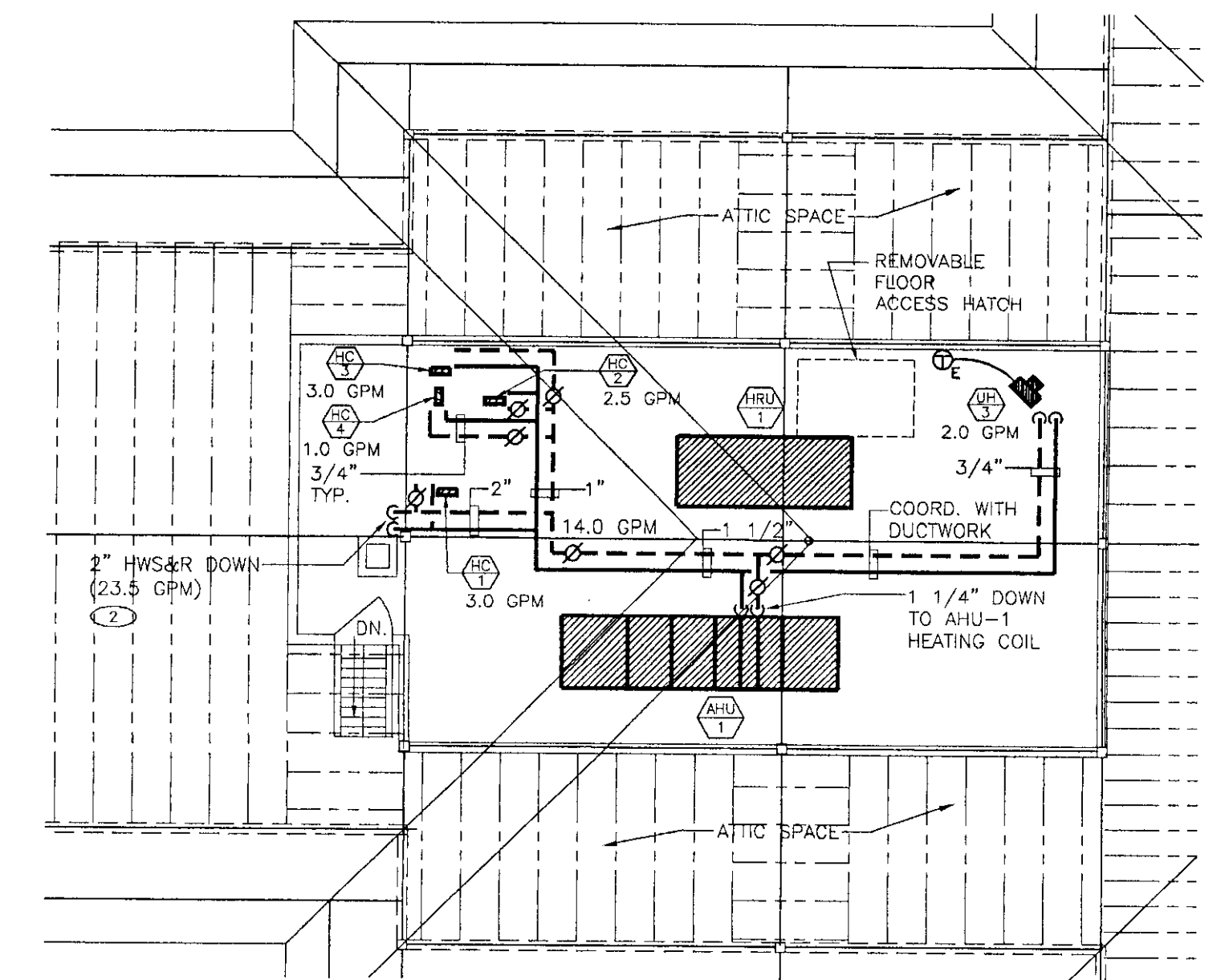
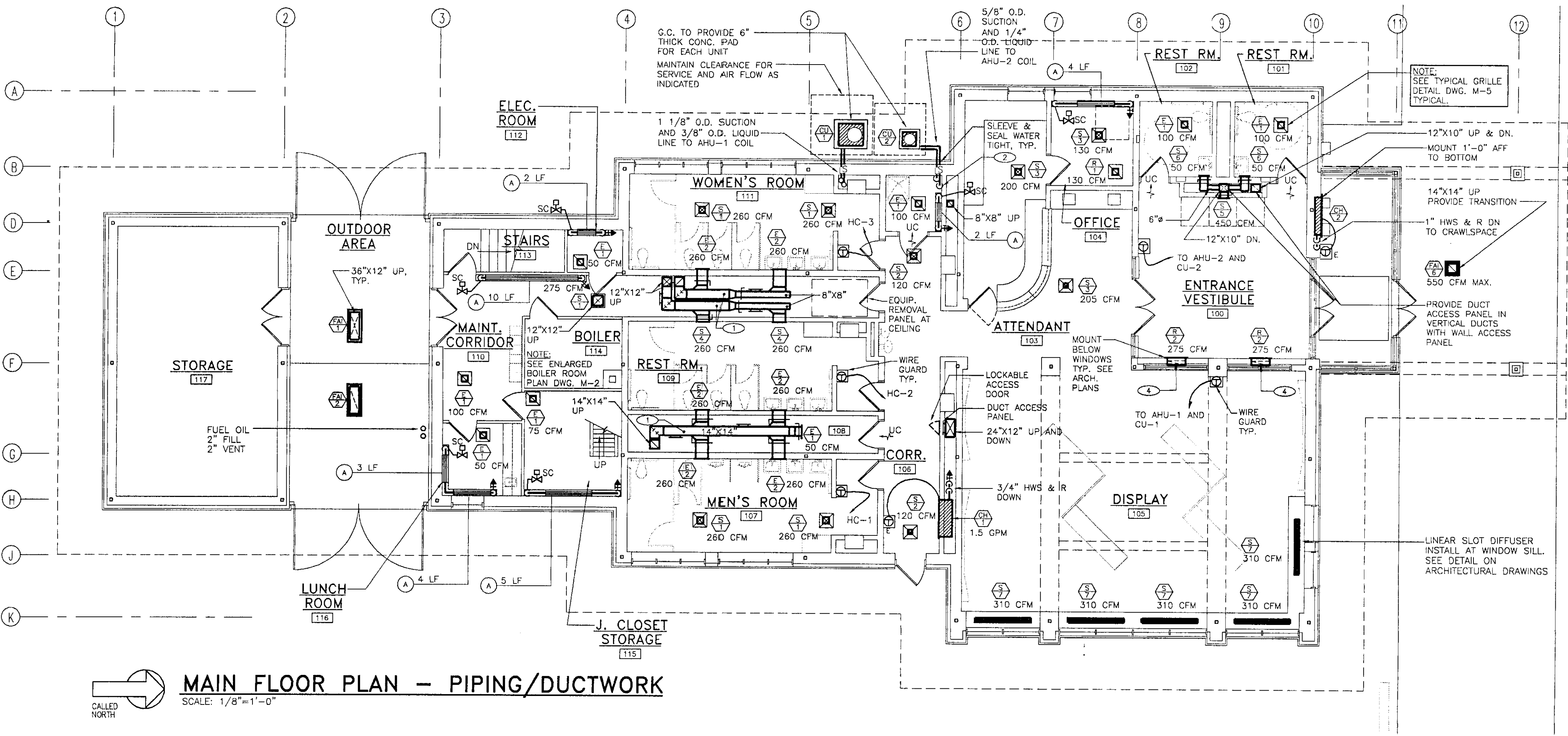


ATTIC MECHANICAL ROOM FLOOR PLAN - DUCTWORK
 SCALE: 1/8"=1'-0"
 CALLED NORTH



ATTIC MECHANICAL ROOM FLOOR PLAN - PIPING
 SCALE: 1/8"=1'-0"
 CALLED NORTH



MAIN FLOOR PLAN - PIPING/DUCTWORK
 SCALE: 1/8"=1'-0"
 CALLED NORTH

MECHANICAL LEGEND AND ABBREVIATIONS

	FLEXIBLE DUCT CONNECTION	CH	CABINET HEATER
	SUPPLY DUCT RISER	UH	UNIT HEATER
	RETURN OR EXHAUST AIR DUCT RISER	DS	DUCT SILENCER
	RETURN OR EXHAUST DUCT DROP	OA	OUTSIDE AIR
	SUPPLY DUCT DROP	SA	SUPPLY AIR
	AIR BRANCH DUCT TAKE-OFF 45°	RA	RETURN AIR
	AIR TURNING VANES IN DUCTWORK	HC	HEATING COIL
	BOTTOM ACCESS DOOR IN DUCTWORK	⊕	SPACE THERMOSTAT, E = 120VAC
	VOLUME DAMPER	EF	EXHAUST FAN
	MOTORIZED DAMPER	AHU	AIR HANDLING UNIT
	BALL VALVE	HRU	HEAT RECOVERY UNIT
	BALL VALVE DRAIN W/CAP & CHAIN	AFF	ABOVE FINISH FLOOR
	CHECK VALVE	B.D.D.	GRAVITY BACKDRAFT DAMPER
	BALANCING VALVE	—	HOT WATER SUPPLY PIPING
	ACCESS DOOR IN SIDE OF DUCTWORK	---	HOT WATER RETURN PIPING
	UC UNDERCUT DOOR	—FOS	FUEL OIL SUPPLY
		—FOR	FUEL OIL RETURN
		↑	AIR VENT
		SC	SELF-CONTAINED RADIATION VALVE

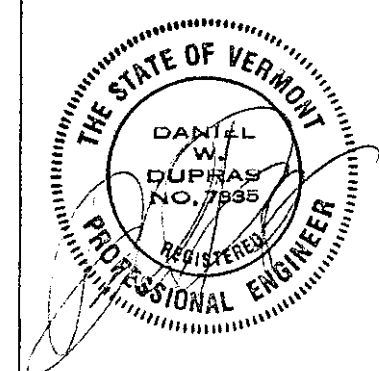
KEYED NOTES: (APPLY TO THIS DRAWING ONLY)

- ① DUCTWORK LOCATED BELOW CEILING
- ② SLEEVE AND FIRE SEAL PIPE PENETRATIONS
- ③ NOT USED
- ④ 18"x4" DOWN TO CRAWLSPACE, TYPICAL FOR TWO, COORDINATE WITH BAR JOISTS, SEE ARCHITECTURAL DETAIL
- ⑤ RUN BETWEEN ROOF TRUSSES, COORDINATE WITH FINAL TRUSS CONFIGURATION
- ⑥ EF IN ATTIC SPACE HANG FROM TRUSS WITH THREADED RODS AND SPRING ISOLATORS
- ⑦ RUN DUCT IN ATTIC SPACE COORDINATE WITH FRAMING

N·B·F
 Nimt • Berryhill • Figiel
 ARCHITECTS P.C.
 24 1/2 Center Street
 Rutland, Vermont
 0 5 7 0 1

Steven J. Banik, P.E.
 STRUCTURAL ENGINEER
 Cuttingsville, Vermont
 0 5 7 3 8

LANE ASSOCIATES
 CONSULTING ENGINEERS, P.C.
 Rutland, Vermont
 0 5 7 0 1



DuBois & King
 Engineering • Planning
 • Development • Management
 Rutland, Vermont
 0 5 7 0 1

Southbound I-91
 Hartford
 Travel and Information Center
 Hartford, Vermont

HVAC PLANS
 AND DETAILS

10/31/00	CLIENT REVIEW
Date	Issued For

Project: Hartford
 Project Number: 0029
M1
 Sheet # 16 of 28