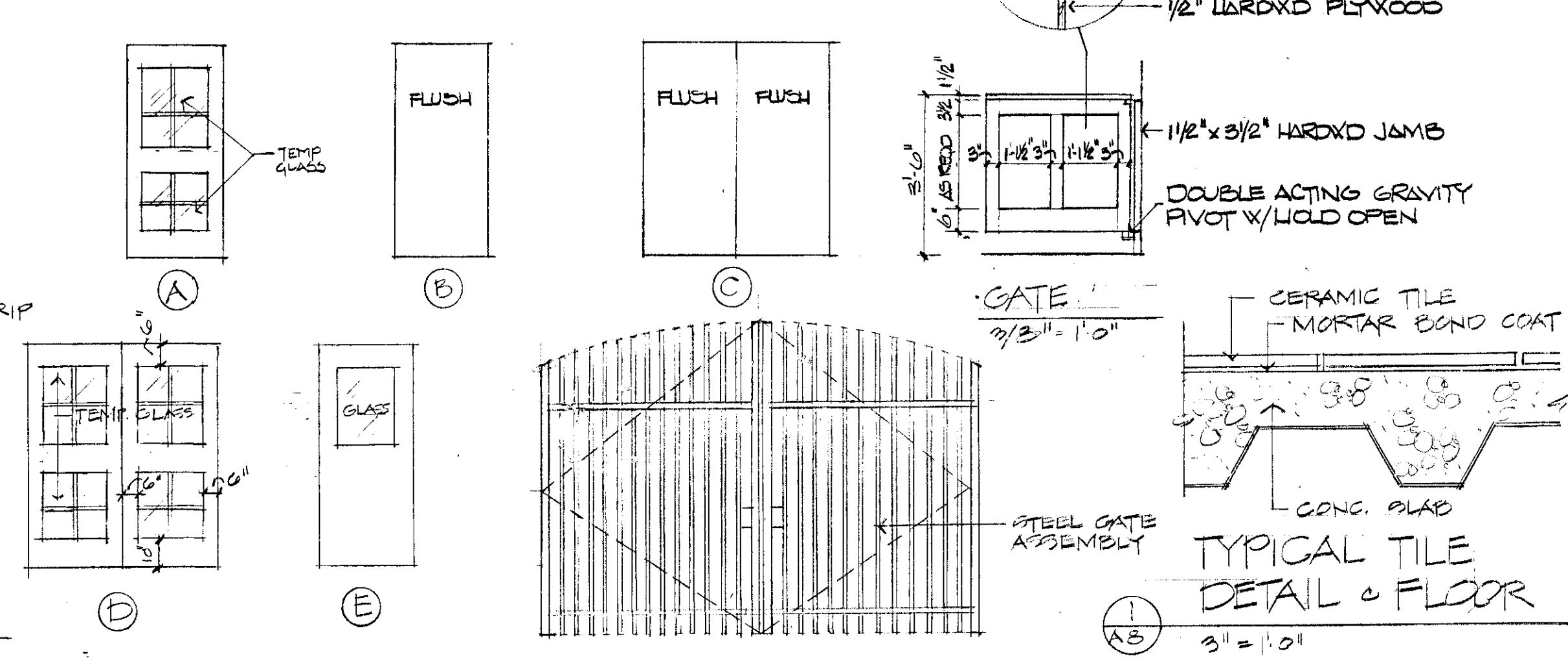


#	ROOM NAME	FLOOR		BASE		WALLS		TRIM		CEILING			REMARKS
		MAT.	FIN.	MAT.	FIN.	MAT.	FIN.	MAT.	FIN.	MAT.	FIN.	HGT.	
100	ENTRANCE VESTIBULE	CONC.	C.T.	C.T.	---	C.M.U.	C.T./WD	---	---	GWB	PAINT	9'-0"	
101	RESTROOM	CONC.	C.T.	C.T.	---	C.M.U.	C.T.	---	---	GWB	PAINT	9'-0"	
102	RESTROOM	CONC.	C.T.	C.T.	---	C.M.U.	C.T.	---	---	GWB	PAINT	9'-0"	
103	ATTENDANT	CONC.	C.T.	C.T.	---	C.M.U.	C.T./WD	---	---	GWB	PAINT	9'-0"	BUILT IN PEER
104	OFFICE	CONC.	C.T.	C.T.	---	C.M.U./GWB	PAINT	---	---	GWB	PAINT	9'-0"	FLOOR HATCH
105	DISPLAY	CONC.	C.T.	C.T.	---	C.M.U.	C.T./WD	WOOD	PAINT	WOOD	STAIN	VARIES	
106	CORRIDOR	CONC.	C.T.	C.T.	---	C.M.U.	C.T.	---	---	GWB	PAINT	9'-0"	
107	MEN'S ROOM	CONC.	C.T.	C.T.	---	C.M.U.	C.T.	---	---	GWB	PAINT	9'-0"	
108	MAINT. CORRIDOR	CONC.	V.C.T.	COVE	---	C.M.U.	PAINT	---	---	GWB	PAINT	9'-0"	
109	RESTROOM	CONC.	C.T.	C.T.	---	C.M.U.	C.T.	---	---	GWB	PAINT	9'-0"	
110	MAINT. CORRIDOR	CONC.	V.C.T.	COVE	---	C.M.U./GWB	PAINT	---	---	GWB	PAINT	9'-0"	
111	WOMEN'S ROOM	CONC.	C.T.	C.T.	---	C.M.U.	C.T.	---	---	GWB	PAINT	9'-0"	
112	ELEC. STORAGE	CONC.	PAINT	COVE	---	C.M.U./GWB	PAINT	---	---	GWB	PAINT	9'-0"	
113	STAIRS	CONC./W.D.	PAINT	---	---	C.M.U./GWB	PAINT	---	---	GWB	PAINT	9'-0"	
114	BOILER	CONC.	PAINT	COVE	---	C.M.U./GWB	PAINT	---	---	GWB	PAINT	9'-0"	
115	J. CLOSET & STORAGE	CONC.	V.C.T.	COVE	---	C.M.U./GWB	PAINT	---	---	GWB	PAINT	9'-0"	
116	LUNCH ROOM	CONC.	V.C.T.	COVE	---	C.M.U./GWB	PAINT	---	---	GWB	PAINT	9'-0"	
117	STORAGE	CONC.	---	---	---	C.M.U.	---	---	---	GWB	PAINT	9'-0"	SURFACE HARDENER
100A	FOYER	CONC.	C.T.	C.T.	---	C.M.U.	---	---	---	GWB	PAINT	9'-0"	RECESSED MAT
AD1	ATTIC	WOOD	PAINT	---	---	GWB	PAINT	---	---	GWB	PAINT	VARIES	3/4" T&G PLYWOOD FUR.
BD1	UNFINISHED CRAWL	CONC.	---	---	---	C.M.U.	---	---	---	EXPOSED JOISTS	---	---	SURFACE HARDENER

DOOR #	WTH	HGT	TYPE	MAT.	FIN.	FIRE RTG	FRAME			HARDWARE SET		
							SILL	MAT.	FIN.	TYPE	MAT.	FIN.
100	6'0"	7'0"	D	ALUM.	---	---	09	12	ALUM.	H-4, L-8, CL-1, PP-1, T, W		
100A	6'0"	7'0"	D	ALUM.	---	---	09	0	ALUM.	H-4, L-8, CL-1, PP-1, W		
100B	6'0"	7'0"	D	ALUM.	---	---	09	0	ALUM.	H-4, L-8, CL-1, PP-1, W		
101	3'0"	7'0"	B	WOOD	STAIN	---	04	---	---	MTL PAINT H-1, L-3, L-4, SI, KP, ST		
102	3'0"	7'0"	B	WOOD	STAIN	---	04	---	---	MTL PAINT H-1, L-3, L-4, SI, KP, ST		
106	3'0"	7'0"	B	H.M.	PAINT	---	01	---	---	MTL PAINT H-2, L-1, W, T		
107	3'0"	7'0"	B	WOOD	STAIN	---	04	---	---	MTL PAINT H-1, L-7, PP, SI, KP, ST		
108	3'0"	7'0"	B	WOOD	STAIN	---	04	---	---	MTL PAINT H-1, L-6, SI, KP REDUCER STRIP		
109	3'0"	7'0"	B	WOOD	STAIN	---	05	---	---	MTL PAINT H-1, L-7, PP, SI, KP REDUCER STRIP		
109A	6'0"	7'0"	B	WOOD	STAIN	---	05	11	MTL	PAINT H-1, L-6, SI, KP REDUCER STRIP		
110B	6'0"	7'0"	C	H.M.	PAINT	---	02	12	MTL	PAINT H-2, L-2, PP, PH, W, T		
111	3'0"	7'0"	B	WOOD	STAIN	---	05	---	---	MTL PAINT H-1, L-7, PP, SI, KP		
112	3'0"	7'0"	B	WOOD	STAIN	---	05	---	---	MTL PAINT H-1, L-6, SI, KP		
113	3'0"	7'0"	B	WOOD	STAIN	COM	02	---	---	MTL PAINT H-1, L-2, FB, PH, W, T		
114	3'0"	7'0"	B	WOOD	STAIN	COM	03	---	---	MTL PAINT H-1, L-2 ST, SI, REDUCER STRIP		
115	3'0"	7'0"	B	WOOD	STAIN	---	05	---	---	MTL PAINT H-1, L-7, PP, SI, SE, KP		
116	3'0"	7'0"	B	WOOD	STAIN	---	02	---	---	MTL PAINT H-1, L-5, CL, SI, V REDUCER STRIP		
117	6'0"	7'0"	C	H.M.	PAINT	---	03	12	MTL	PAINT H-2, L-2, PP, PH, W, T		
118	3'0"	7'0"	B	WOOD	STAIN	---	03	---	---	MTL PAINT H-1, L-2, SI, ST		
119A/119	VARIES	F	STEEL	PAINT	---	---	---	---	---	MTL PAINT HINGES & LOCKS BY MANUF.		
119B/119	VARIES	F	STEEL	PAINT	---	---	---	---	---	MTL PAINT HINGES & LOCKS BY MANUF.		
200	3'0"	6'6"	B	H.M.	PAINT	COM	03	---	---	MTL PAINT H-1, L-5		

DOOR TYPES
1/2" = 1'-0"



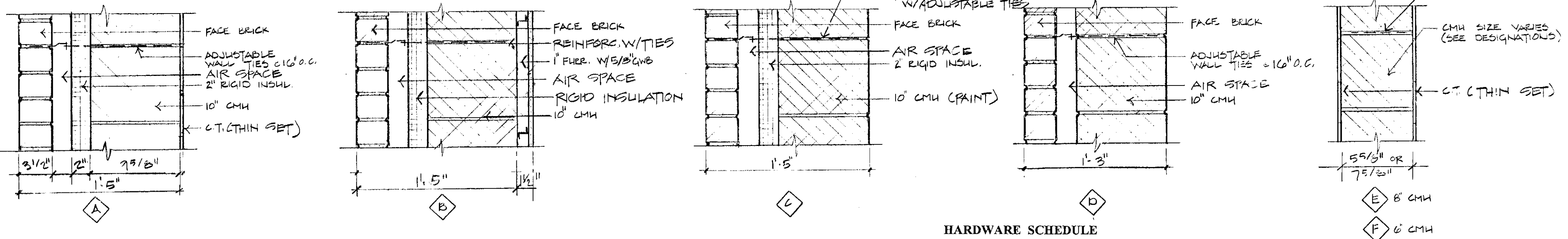
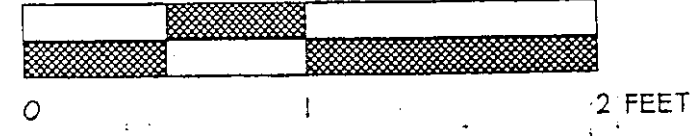
WALL TYPES
1/2" = 1'-0"

NOTE: NOM. DIMENSIONS ARE TO FACE OF BLOCK

NOTE: USE RADIUS OR "SHALL NOSE" CORNERS @ ALL EXPOSED AREAS.

NOTE: USE STEEL AND PINTLE TIE ROD TYPE (9 GA) @ 10" OC. SPACING.

1 NUMBERED BESIDE SYMBOL
◇ DENOTES WALL FIRE RATING IN MINUTES.

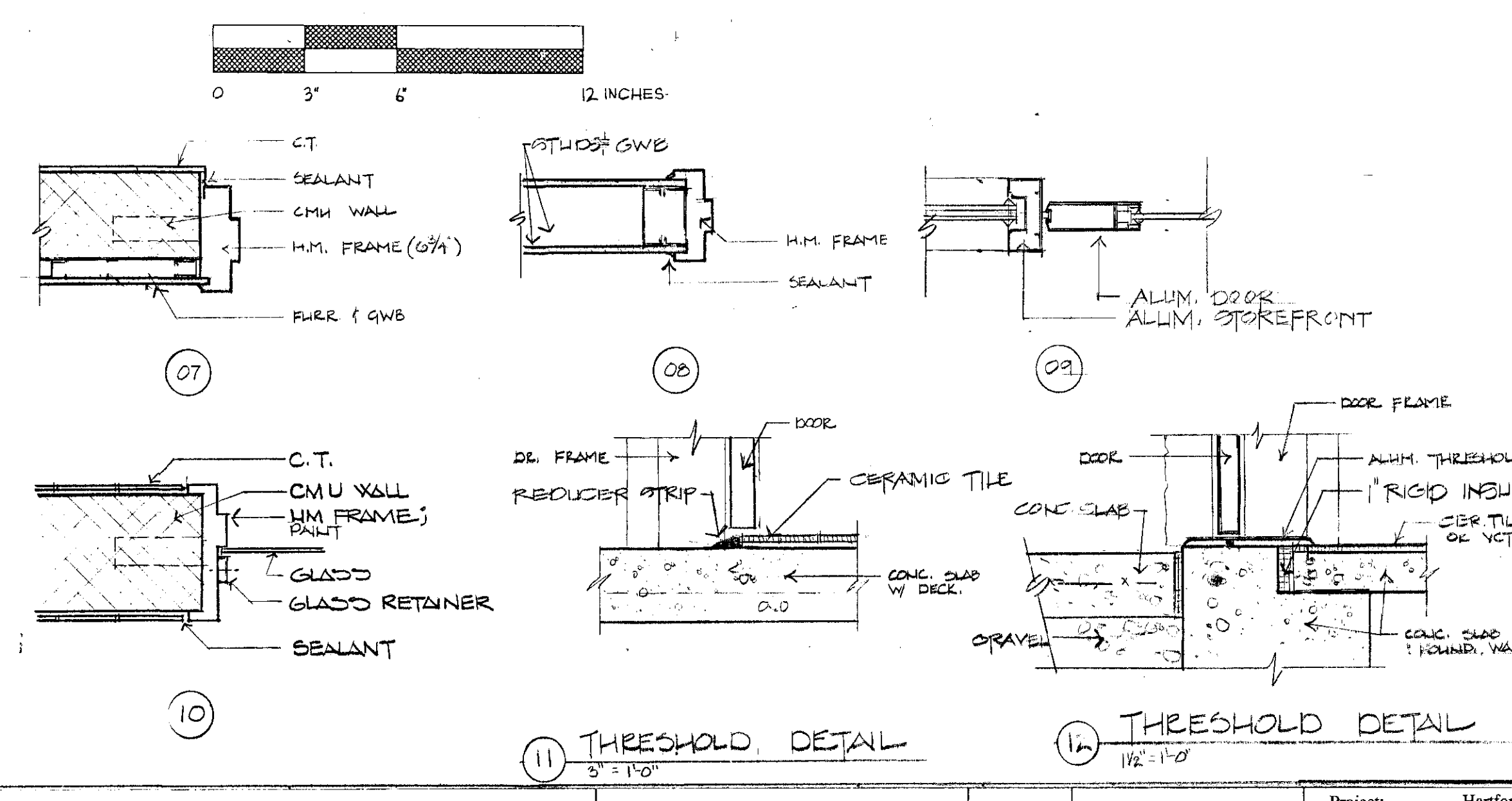


HARDWARE SCHEDULE

SYMBOL	ITEM DESCRIPTION	MANUFACTURER & PRODUCT DESIGNATION
H-1	1 1/2" pair ball bearing butt hinges per leaf	Stanley FBB 179 4 1/2 x 4 1/2 US4 for 3'-0" wide doors
H-2	1 1/2" pair non-ferrous ball bearing butt hinges per leaf with non-removable pin	Stanley FBB 168 4 1/2 x 4 1/2 US4 (for doors over 3'-0" w)
H-3	Gravity Pivot Hinges	Bonner Type 7512-H, US4
H-4	1 1/2" pair stainless steel butt hinges	KAWNEER 9145 W/NRP
L-1	Panic Exit Device, lever handle	NT Monarch 18M-4LE "Dane", US4
L-2	Mortise Storeroom/Exit Lock, lever handle	NT Falcon LM-581-DN, US4
L-3	Bored lockset, Privacy function, lever handle	NT Falcon T-301-D, US4
L-4	Cylinder deadlock	NT Falcon #D421, US4
L-5	Bored lockset, Passage function, lever handle	NT Falcon T-101-D, US4 (@ fire rated doors use 3/4" proj.)
L-6	Bored lockset, Classroom function, lever handle	NT Falcon T-561-D, US4
L-7	Cylinder deadlock w/ thumb-turn	NT Falcon #D441, US4
Note:	All locks to have 7 pin interchangeable cores.	
L-8	PANIC EXIT DEVICE	KAWNEER "DOR-O-MATIC 1690"
CL	Closer - one per leaf	Sargent 350 w delay action, parallel arm, paint to match frame.
SL-1	CLOSER - ONE PER LEAF	LCN 400 SUPER SMOOTHIE
PP	Push plate & pull - one set per leaf @ maintenance side	Ives 8103 x 12" US4 Pull
PP-1	KAWNEER "ARCHITECTS CLASSIC 1690"	Ives 8200 8" x 16" US4 Push Plate
SI	Door silencers - 3 per leaf @ jamb, 2 per db1 leaf @ head.	Ives #20
FB	Flush bolts - one pair per leaf	Ives #458 US4
SB	Surface bolts - one pair per leaf	Ives #454, 8" long, US4
ST	Kickplate - one per leaf on push side - 8" high by 1 1/2" less than door width for single door	Ives #8400 Metal US4
DH	Door stop or wall bumper as required one per leaf	Ives #407 1/2 - US4 or Ives #430 series US4 where floor mounted
W	Door holder - one per leaf	Ives #452, 5" long, US4
T	Weatherstripping & seals	National Guard Products, Inc. 5050 Weatherstrip 320V Door bottom Astragal @ db1 doors

LEGEND: ROOM FINISH SCHEDULE ABBREVIATIONS

FLOOR	WALLS
CONC. - CONCRETE	C.M.U. - CONCRETE/MASONRY UNIT
C.T. - CERAMIC TILE	GWB - GYPSUM WALL BOARD
V.C.T. - VINYL TILE	C.T. - CERAMIC TILE
WD. - WOOD	
CPT. - CARPET	
BASE	
C.T. - CERAMIC TILE	
COVE. - KICKER	



N.B.F. Nimitz • Berryhill • Figiel ARCHITECTS P.C. 24 1/2 Center Street Rutland, Vermont 0 5 7 0 1	Steven J. Banik, P.E. STRUCTURAL ENGINEER Cuttingsville, Vermont 0 5 7 3 8	LANE ASSOCIATES CONSULTING ENGINEERS, P.C. Rutland, Vermont 0 5 7 0 1	DuBois & King • Engineering • Planning • Development • Management Rutland, Vermont 0 5 7 0 1	Southbound I-91 Hartford Travel and Information Center Hartford, Vermont		Room Finish Schedule Door Schedule Wall, Door & Frame Types		Project: Hartford Project Number: 9203
				Job Name	Date: 03.31.00	CLIENT REVIEW Issued For	Sheet # 8 Of 28	