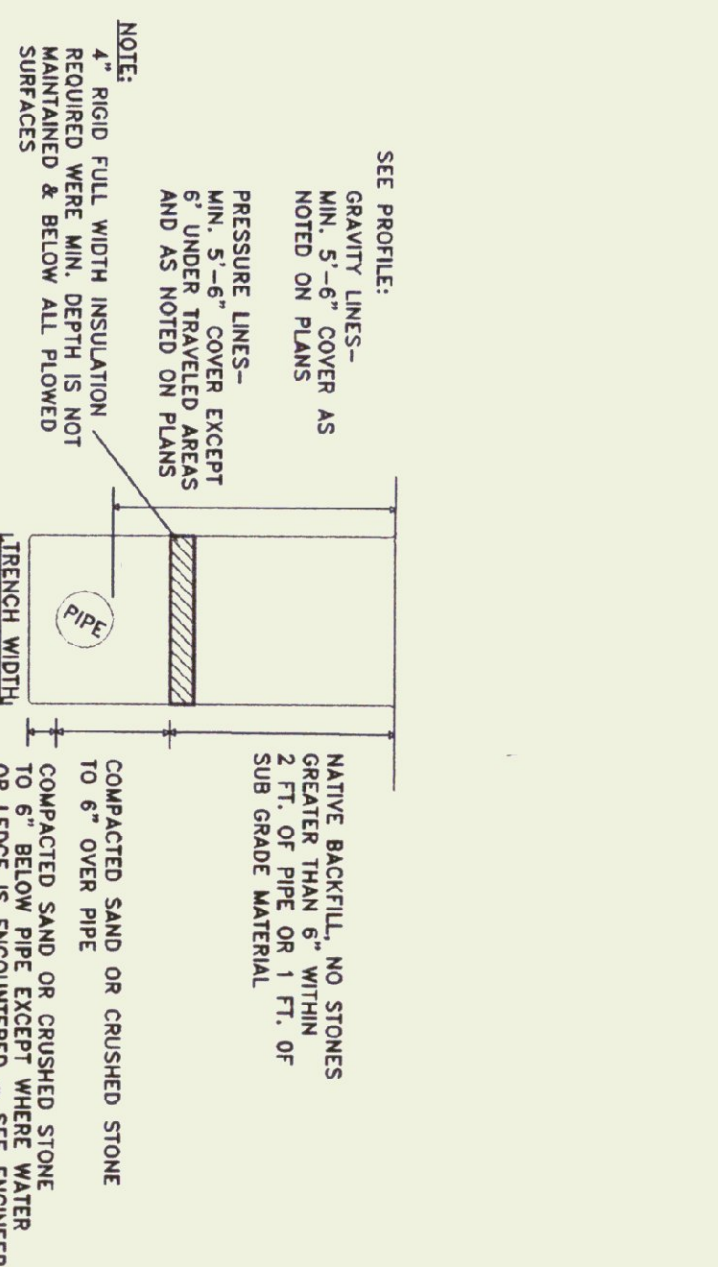


EXIST. PAVEMENT
SAWCUT EDGES
1 1/2" (MIN.) ASPHALT OR MATCH EXISTING WHICH EVER IS GREATER
SAWCUT EDGES
6" (MIN.) CRUSHED GRAVEL FOR ROAD BASE
12" (MIN.) GRAVEL FOR ROAD BASE

ALL CONST. TO MEET STATE OF VERMONT CONTACT P.W.D. FOR TOWN STANDARDS.

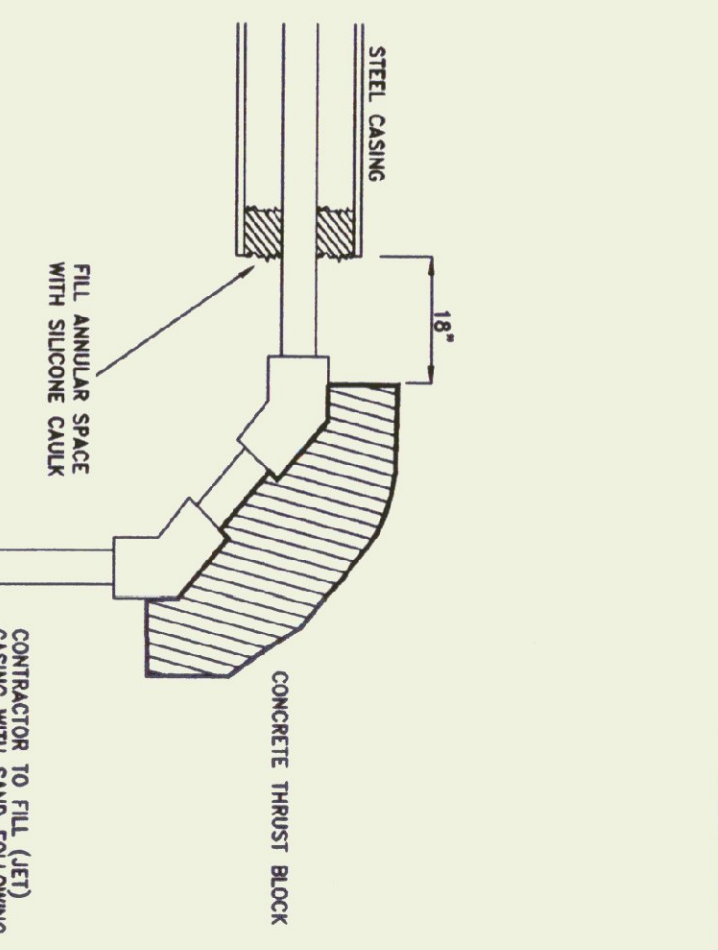


SEE PROFILE:
GRAVITY LINES - MIN. 5'-6" COVER AS NOTED ON PLANS
PRESSURE LINES - MIN. 6" COVER EXCEPT UNDER TRAVELED AREAS AND AS NOTED ON PLANS

NOTE:
4" RIGID FULL WIDTH INSULATION REQUIRED WHERE MIN. DEPTH IS NOT MAINTAINED THROUGHOUT SURFACES & BELOW ALL FLOWED SURFACES

NATIVE BACKFILL, NO STONES
MIN. 5" MIN. COVER
2 FT. OF PIPE OR 1 FT. OF SUB GRADE MATERIAL

COMPACTED SAND OR CRUSHED STONE TO 6" OVER PIPE
TO 6" BELOW PIPE EXCEPT WHERE WATER TO BE ENCOUNTERED - SEE ENGINEER



CONTRACTOR TO FILL (LET) CASING WITH SAND FOLLOWING INSTALLATION

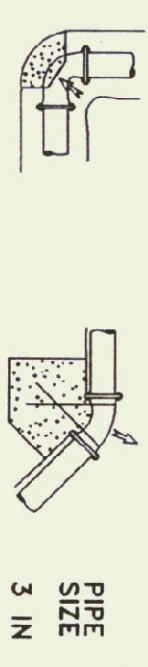
PAVEMENT REPAIR
NTS

TYPICAL TRENCH DETAIL
NTS

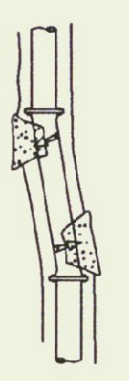
SLEEVE TERMINATION DETAIL
NTS

ESTIMATED BEARING LOADS

SOIL	lbs / sq ft
SILT	1500
SANDY SILT	3000
SAND	4000



MAX. THRUST GENERATED (lbs.)
PIPE SIZE 3 IN
45" BEND 1940

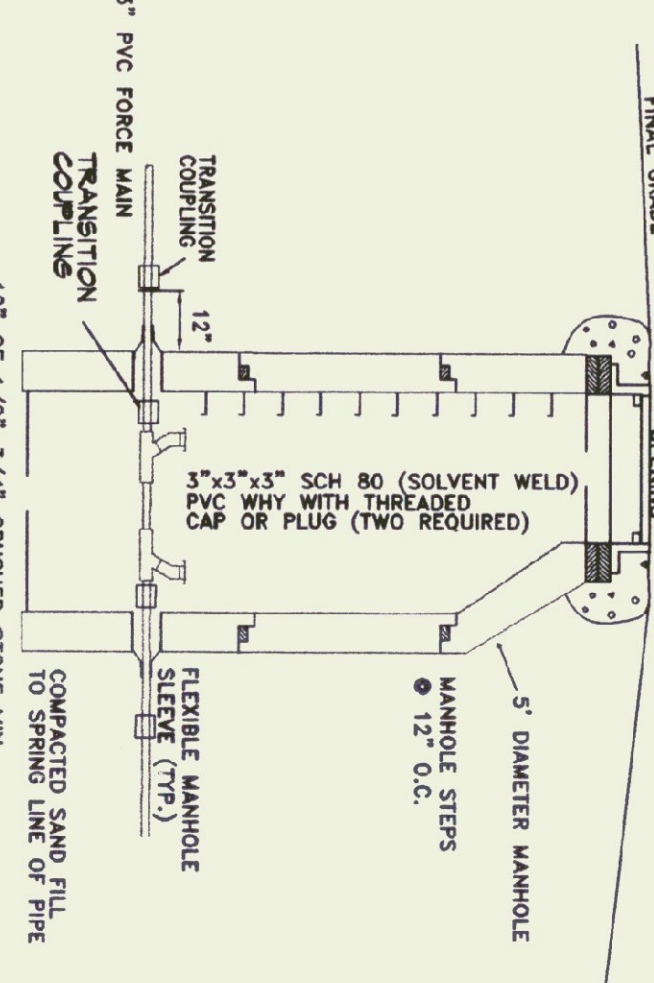
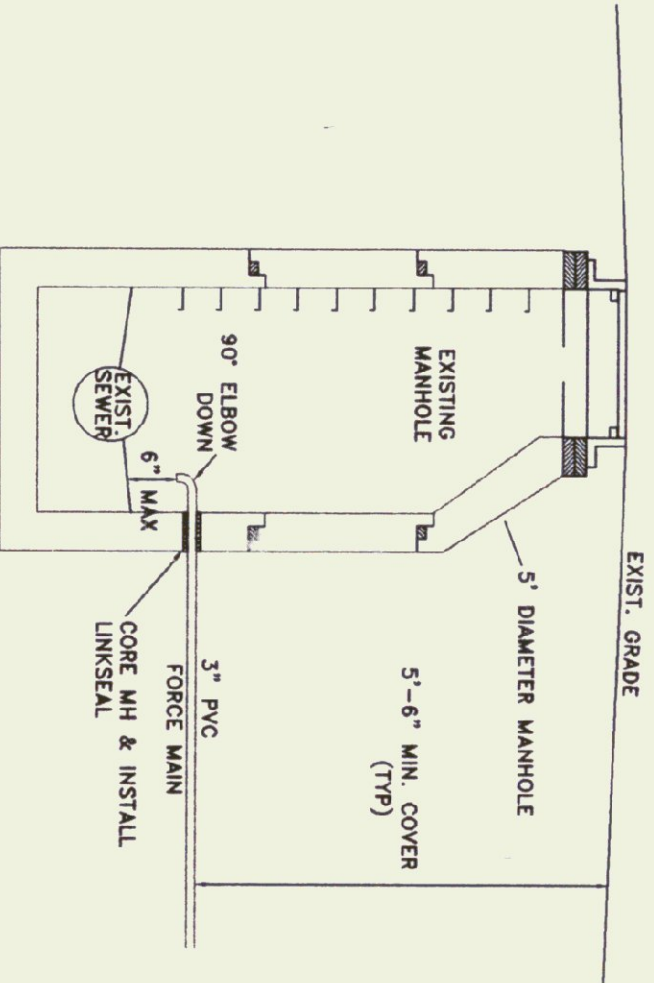


THRUST BLOCK BEARING AREAS (SQ. FT.)
PIPE SIZE 3 IN
45" BEND 1.3

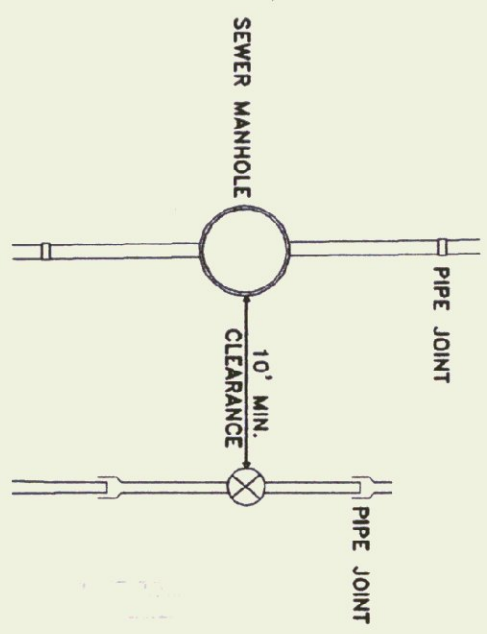
- MAX. DESIGN WATER PRESSURE =
WATER TEST PRESSURE =
1. CONCRETE SHALL BE PRODUCED IN A READY MIX PLANT FOR THIS PROJECT.
 2. SLUMP SHALL BE BETWEEN 1" AND 4".
 3. ALL JOINTS SHALL CONFORM TO ASTM C 493.
 4. MINIMUM STRENGTH SHALL BE 2000 PSI AT 28 DAYS.
 5. ALL JOINTS SHALL BE REINFORCED WITH ENGINEER INSPECTS.

THRUST BLOCK LOCATION
NTS

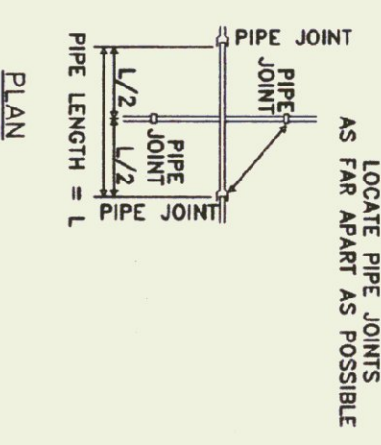
FORCE MAIN TERMINATION MANHOLE
NTS



TWO WAY CLEANOUTS
NTS

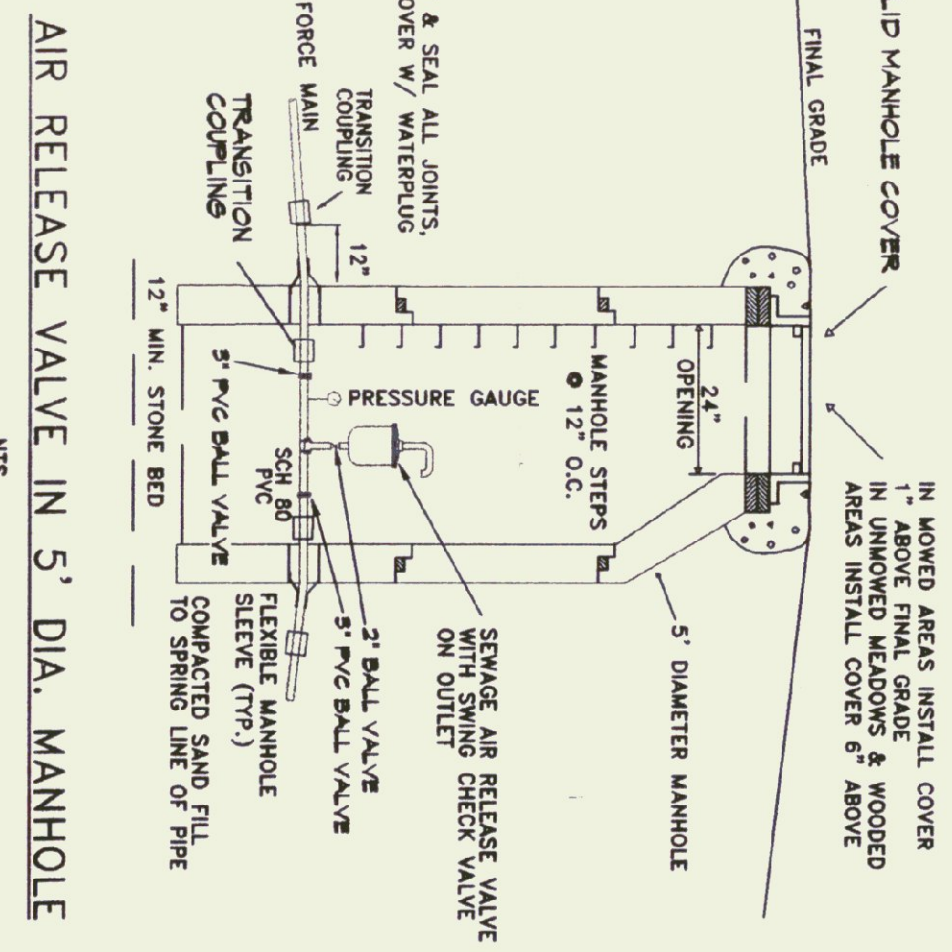


PARALLEL WATER AND SEWER MAIN INSTALLATION
NTS



WATER AND SEWER MAIN CROSSINGS
NTS

NOTE: ALL GATE VALVES, WATER SHUT OFFS, ETC., TO BE A MINIMUM OF 10' FROM SEWERS.



THIS RECORD DRAWING IS BASED ON INFORMATION PROVIDED BY THE CLIENT. THE ENGINEER HAS CONDUCTED VISUAL INSPECTIONS OF THE EXISTING CONDITIONS WHICH CAN NOT BE VERIFIED BY ENMAN ENGINEERING P.C. PERSONNEL. THE ENGINEER HAS CONDUCTED VISUAL INSPECTIONS OF THE EXISTING CONDITIONS WHICH CAN NOT BE VERIFIED BY ENMAN ENGINEERING P.C. PERSONNEL. THE ENGINEER HAS CONDUCTED VISUAL INSPECTIONS OF THE EXISTING CONDITIONS WHICH CAN NOT BE VERIFIED BY ENMAN ENGINEERING P.C. PERSONNEL.

REVISIONS:

3/11/99	ADD THRUST BLOCK DETAIL
6/15/99	ADD TRENCH DETAIL FOR REVIEW
7/02/99	RESUBMIT FORCE MAIN MISC. NOTE
8/20/99	ADD CLEANOUT LOCATIONS
2/18/00	MISC. NOTE EDITS
	ADD RECORD INFORMATION

RELEASED: APRIL 2000
RELEASED FOR: RECORD DRAWING

FAIR HAVEN, VERMONT
WELCOME CENTER

Emman Engineering
Environmental • Civil • Sanitary
230 North Main Street
Rutland, Vermont 05701
(802)770-3437
All rights reserved.

THE CERTIFICATION ON THIS DRAWING ONLY INDICATES THAT THE ENGINEER HAS CONDUCTED VISUAL INSPECTIONS OF THE EXISTING CONDITIONS WHICH CAN NOT BE VERIFIED BY ENMAN ENGINEERING P.C. PERSONNEL. THE ENGINEER HAS CONDUCTED VISUAL INSPECTIONS OF THE EXISTING CONDITIONS WHICH CAN NOT BE VERIFIED BY ENMAN ENGINEERING P.C. PERSONNEL. THE ENGINEER HAS CONDUCTED VISUAL INSPECTIONS OF THE EXISTING CONDITIONS WHICH CAN NOT BE VERIFIED BY ENMAN ENGINEERING P.C. PERSONNEL.

MISCELLANEOUS SEWER DETAILS
RECORD DRAWING
SCALE: AS NOTED
DATE: 02/24/99
DESIGN BY: BJE/TNT
DRAWN BY: JBT/JPL
SHEET NO: 7 OF 9
PROJECT NO: 9816