

ASSUME 3" H. = 100.00'

NOTE:

EXIST. PIPE 4" CAST IRON, 2' OUT FROM B.L.A.

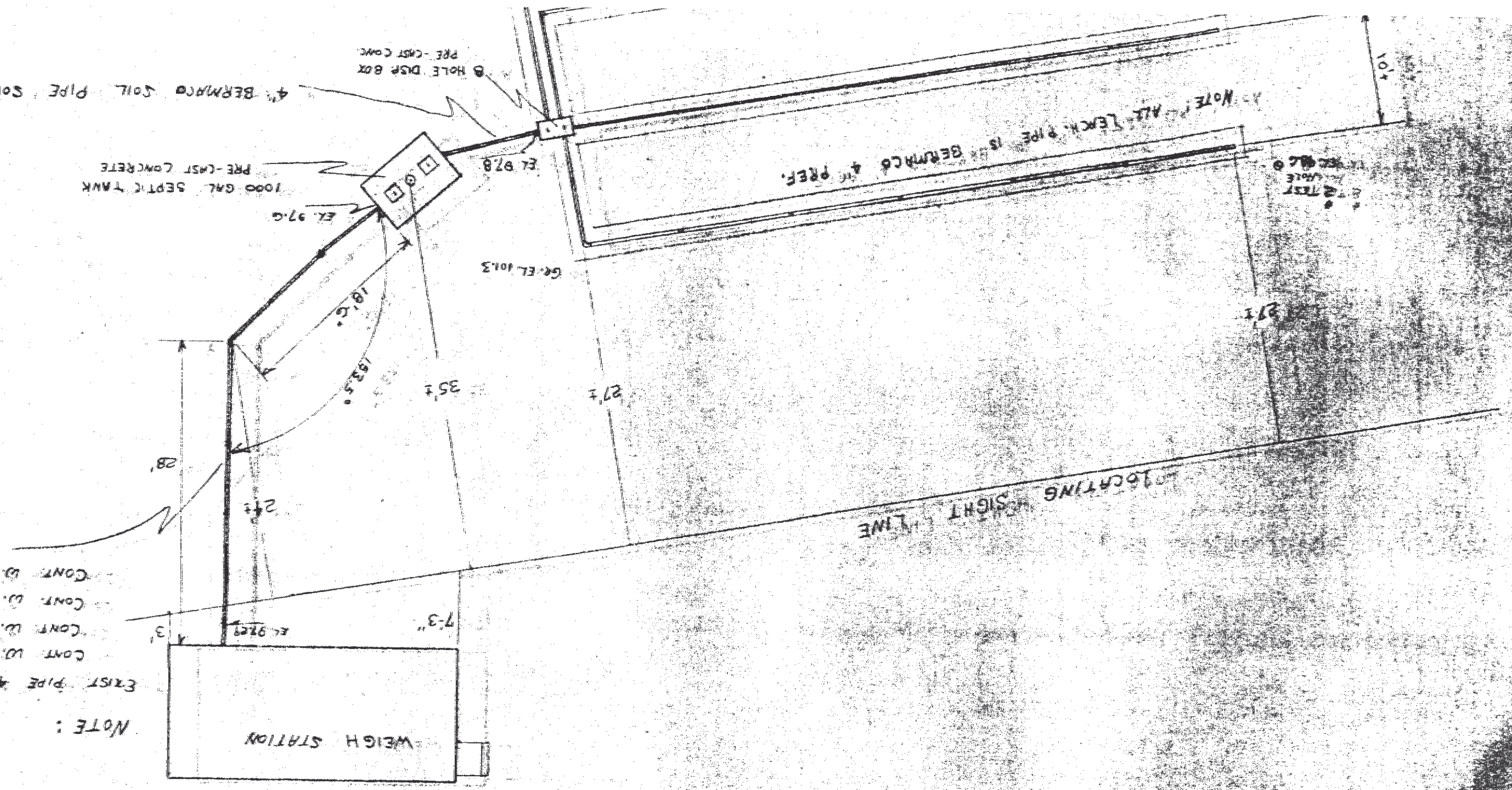
CONT. W. CAST IRON, NO HUB, FOR 10'

CONT. W. TRANSITE PIPE FOR 10'

CONT. W. 4" 45' EL.

CONT. W. 4" PIPE FOR 10'-0"

6512 795



NOTE: ALL LEACH PIPE IS BERMUDA 4" PREF.

4" BERMUDA SOIL PIPE SOLID (9'-6" Lg.)

1000 GAL. SEPTIC TANK
PRE-CAST CONCRETE

HOLE DISP. BOX
PRE-CAST CONC.

TEST
HOLE

LOCATING SIGHT LINE

WEIGH STATION

7'-3"

EL. 97.0

4' 3"

24'

28'

35'

27'

GR. EL. 101.3

EL. 97.8

EL. 97.0

18'-0"

183.5'

101'

27'