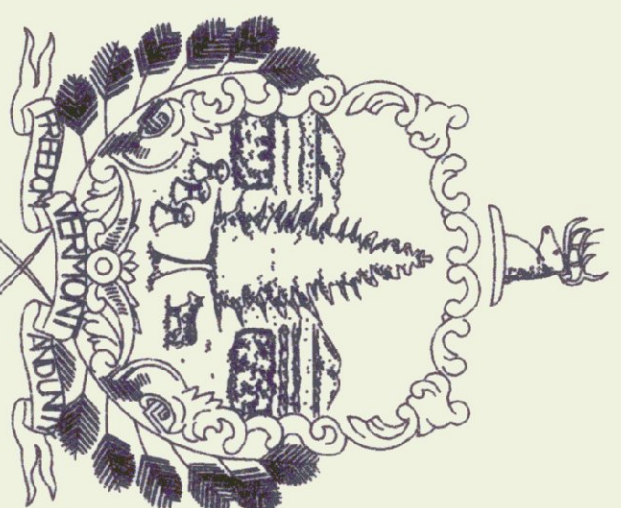


STATE OF VERMONT
DEPARTMENT OF STATE BUILDINGS
AGENCY OF ADMINISTRATION, MONTPELIER, VERMONT

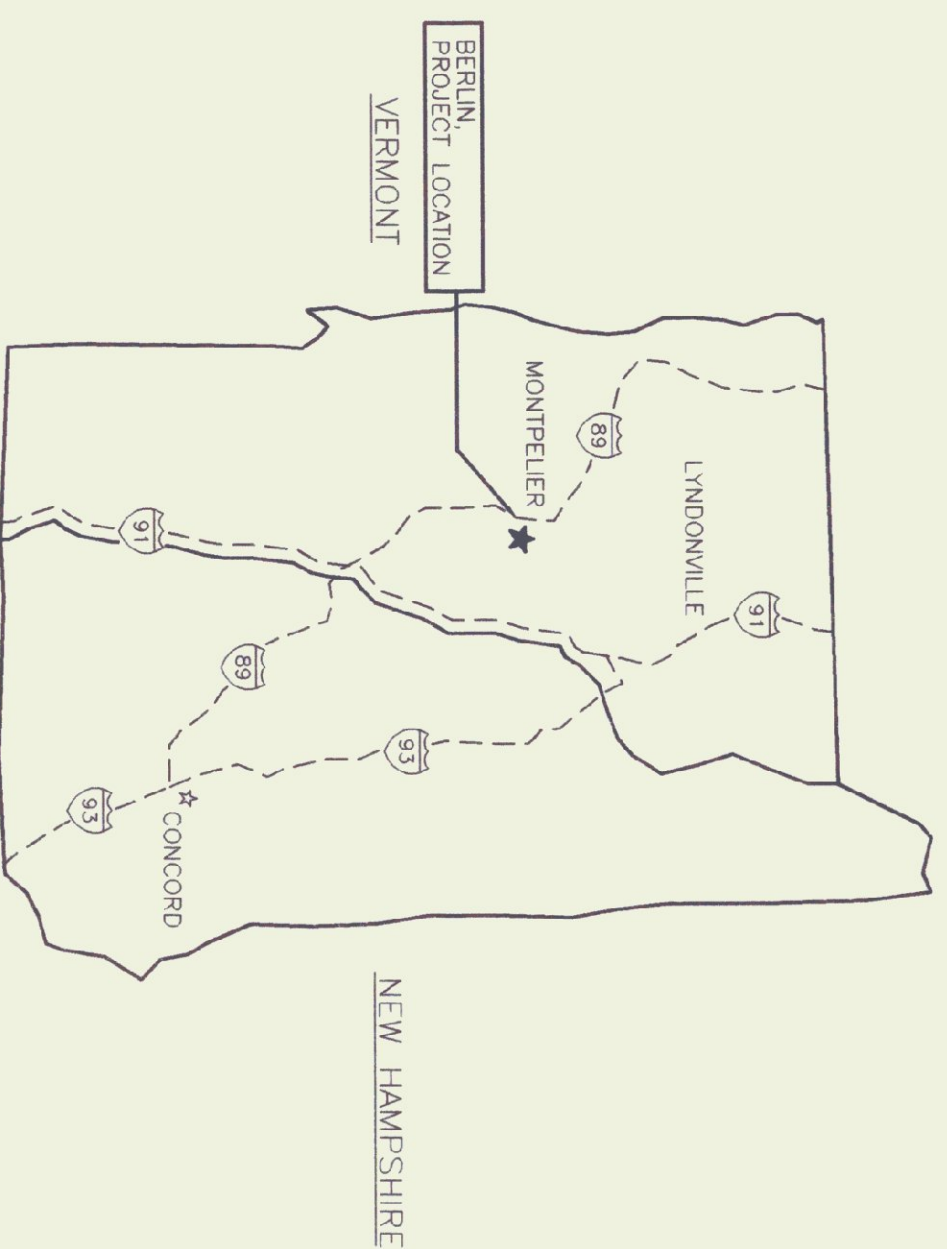
AGENCY OF TRANSPORTATION
MATERIALS AND RESEARCH DIVISION
AGGREGATE LABORATORY COLLECTION SYSTEM RENOVATIONS

BERLIN, VERMONT



Howard Dean, M.D.
Governor

JANUARY 29, 1999



PROJECT LOCATION MAP

NOT TO SCALE

LANE
ASSOCIATES
CONSULTING
ENGINEERS, P.C.

HEATING, VENTILATION, & AIR CONDITIONING,
PLUMBING, FIRE PROTECTION, & ELECTRICAL

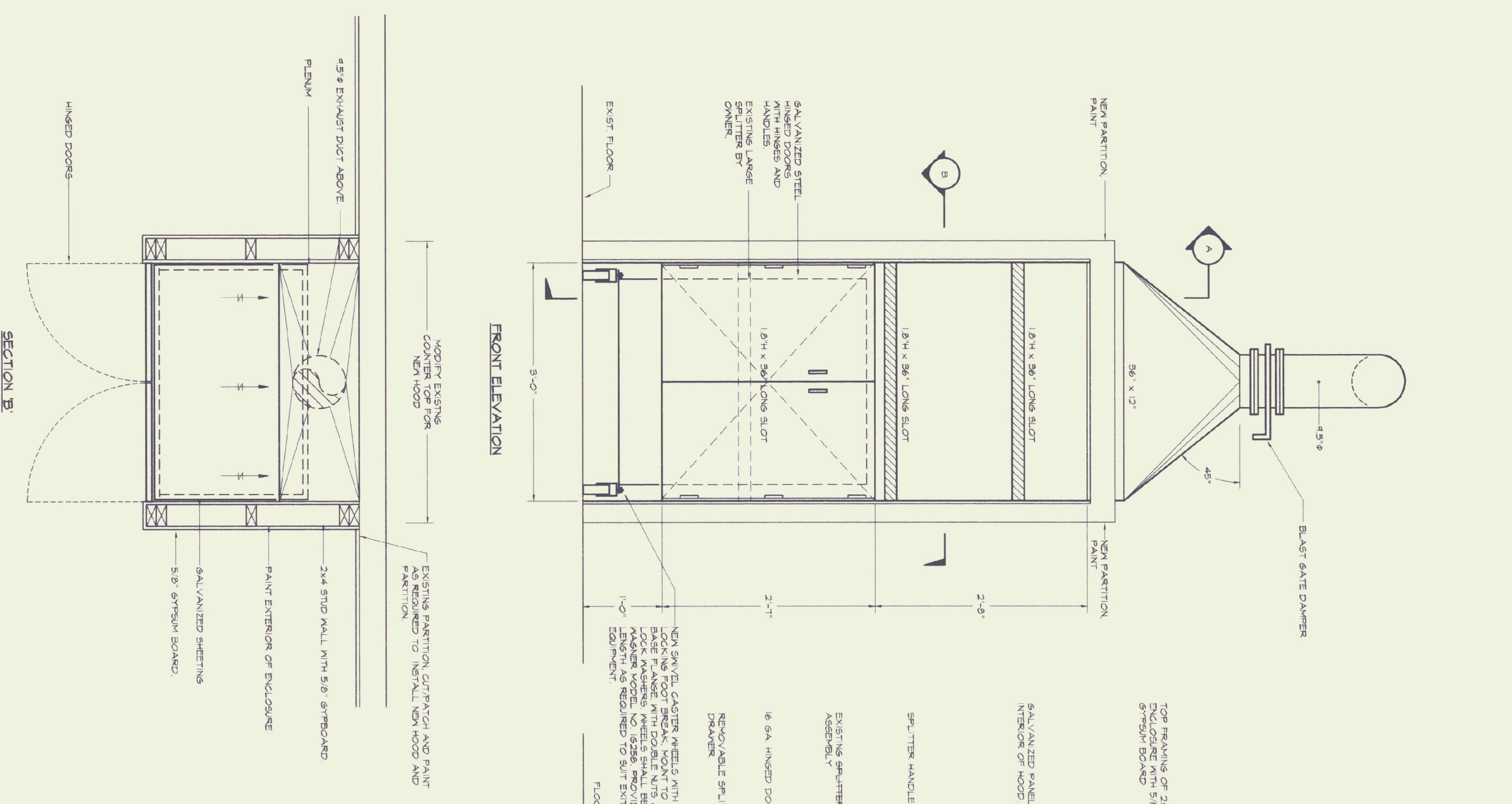
CHARLES F. LANE, P.E.
DANIEL W. DUPRAS, P.E.
WILLIAM C. LANE, P.E.

51 KILLINGTON AVENUE,
RUTLAND, VERMONT 05701
TELEPHONE: (802)747-3346
FAX/MODEM: (802)747-3356

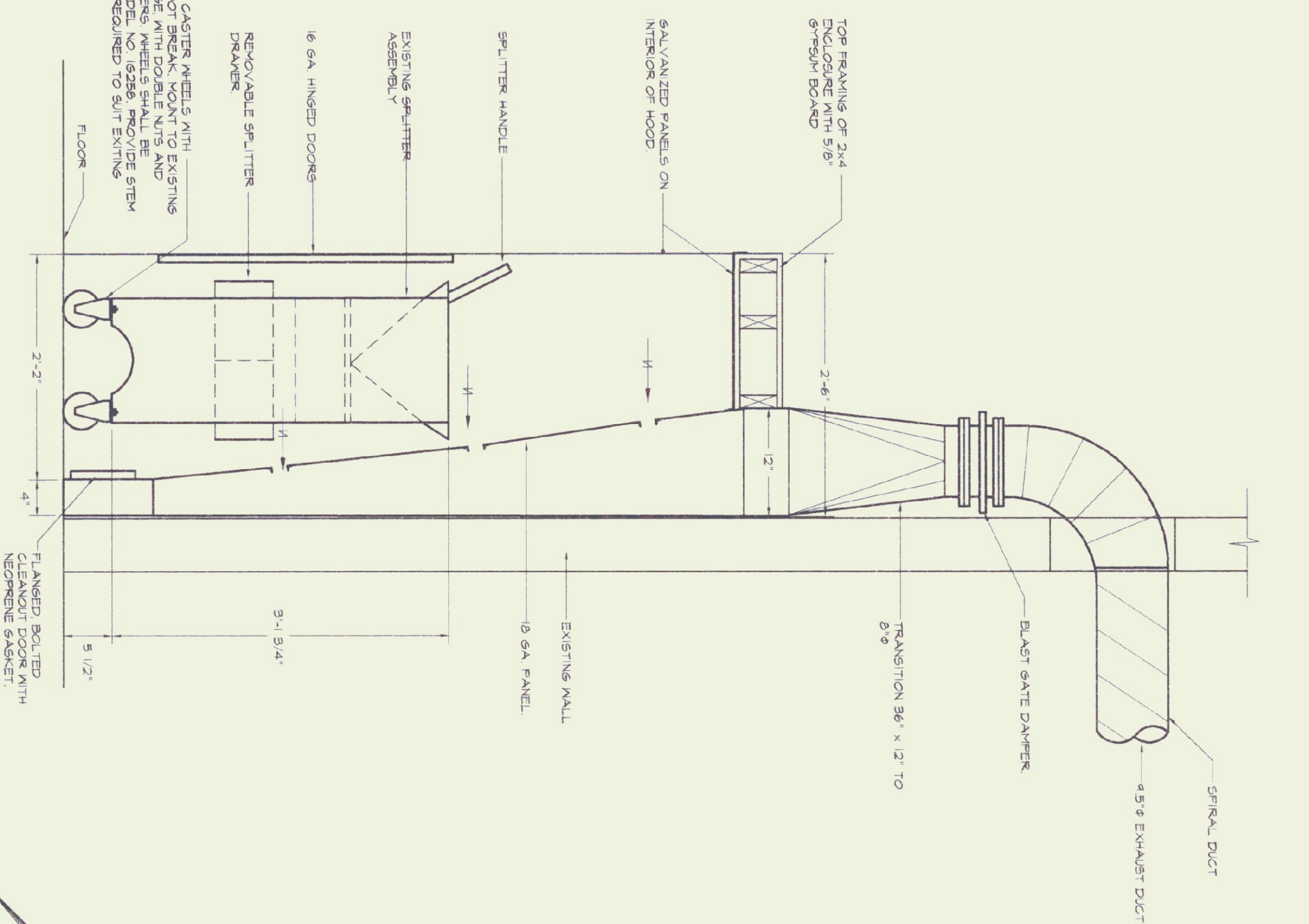
INDEX OF DRAWINGS

- M1 A01 LABORATORY DUST COLLECTION SYSTEM PLANS AND DETAILS
- M2 A01 LABORATORY DUST COLLECTION SYSTEM DETAILS
- E1 DUCT COLLECTION SYSTEM - ELECTRICAL

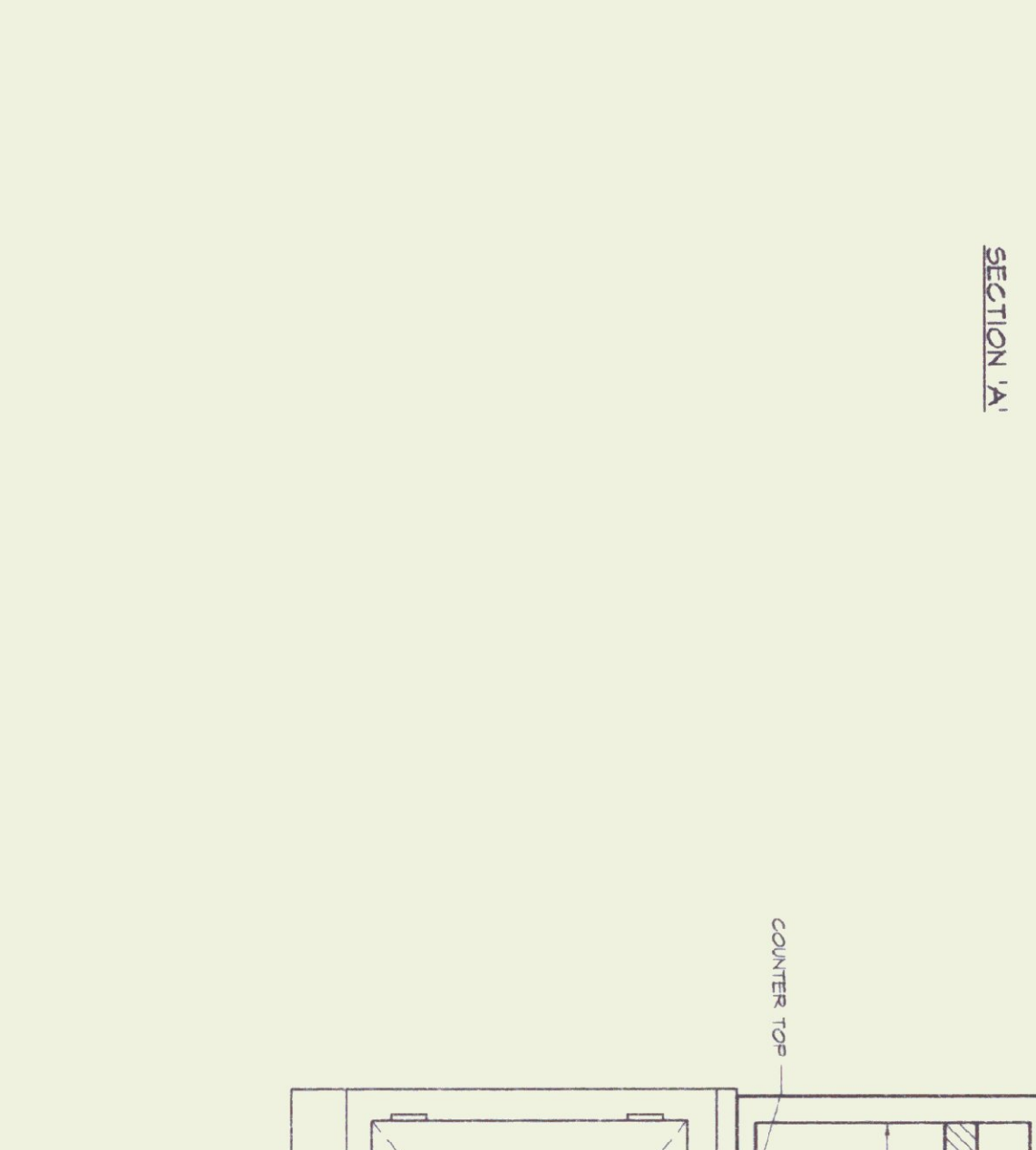
AGENCY OF ADMINISTRATION
DEPT. OF BUILDINGS & GENERAL SERVICES
2 GOVERNOR AIKEN AVENUE
MONTPELIER, VERMONT 05633-5801
THOMAS W. TORTI, COMMISSIONER



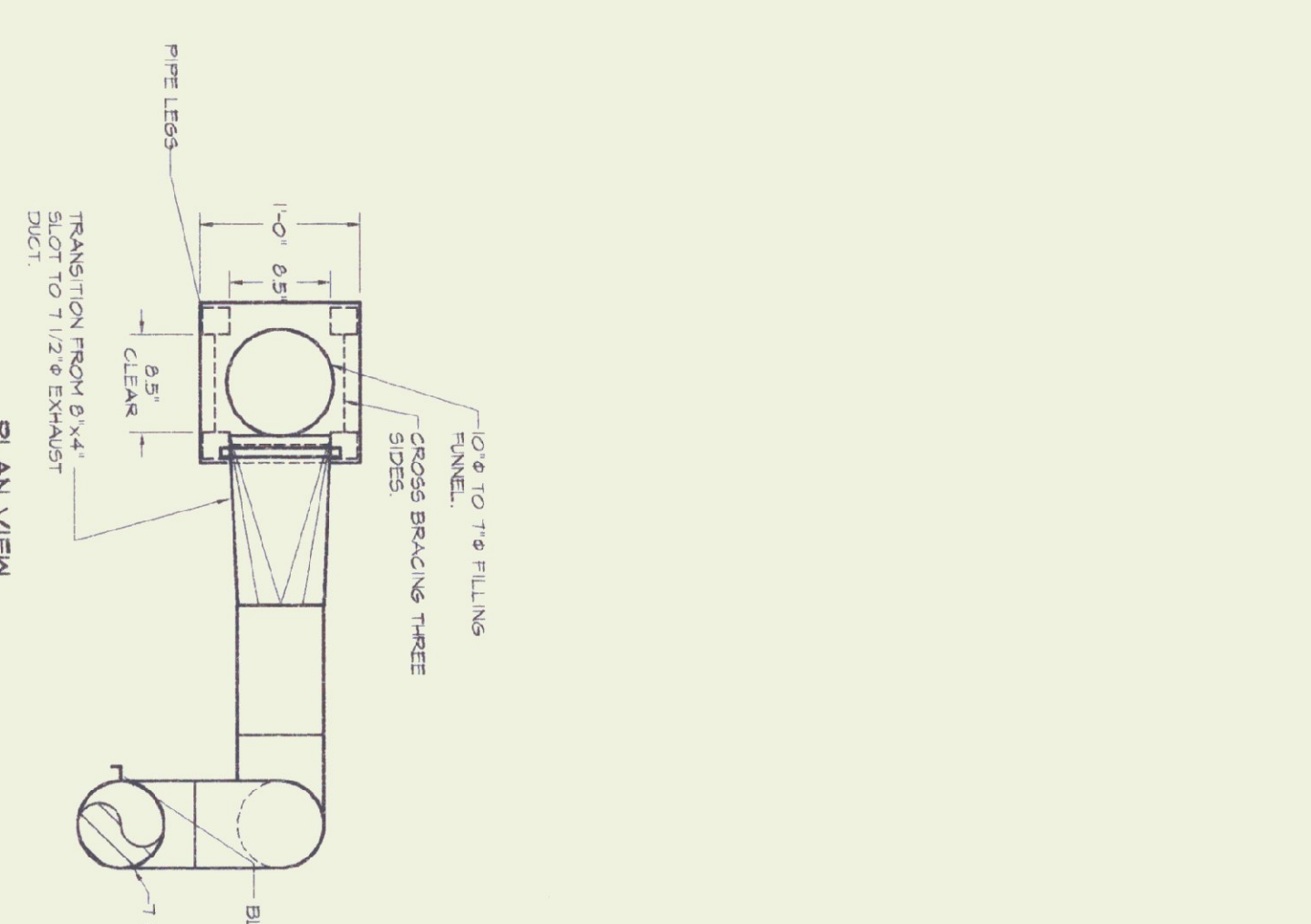
B LARGE SPLITTER HOOD DETAILS
SCALE 1/4\"/>



SECTION A

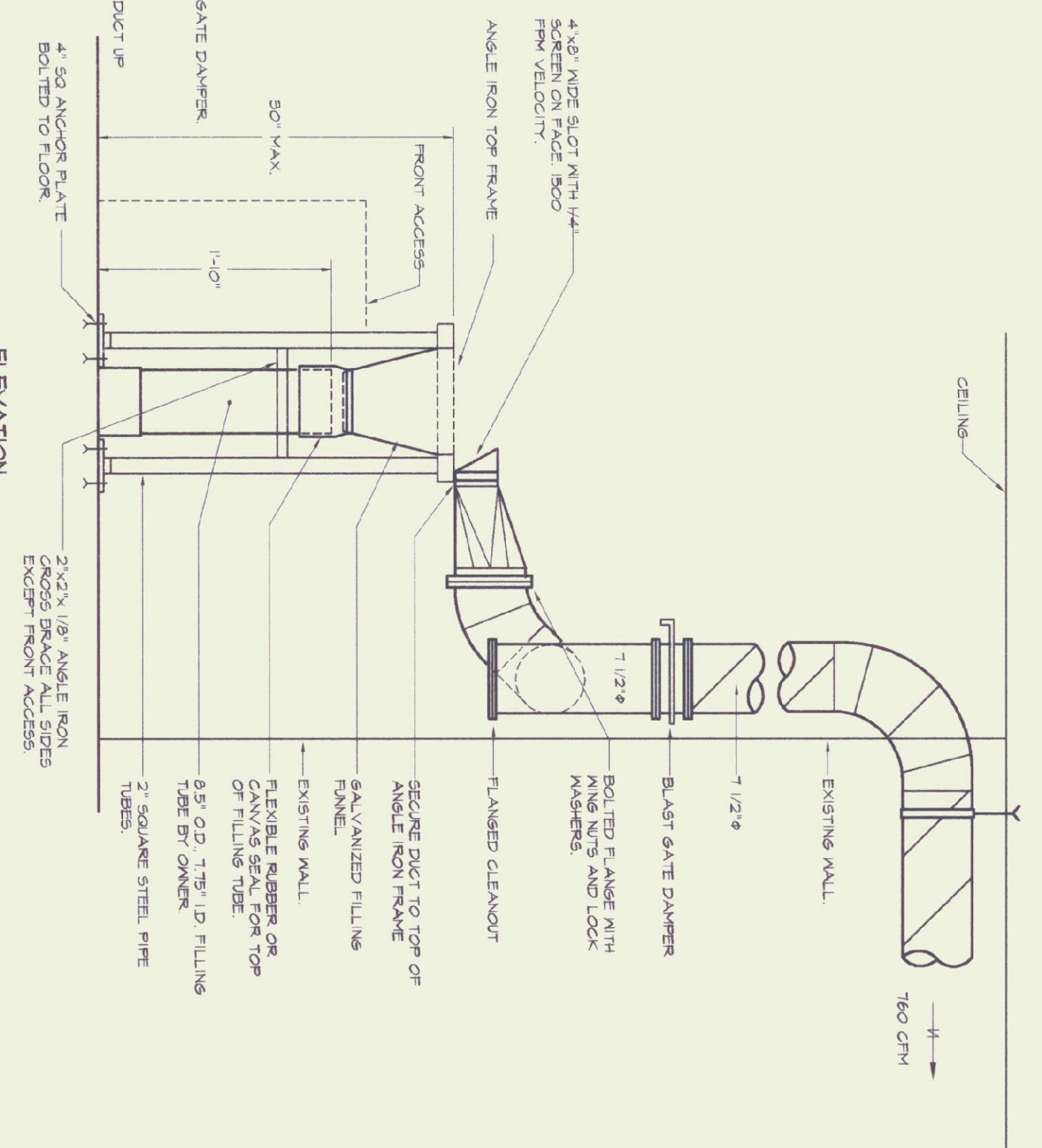


SECTION B

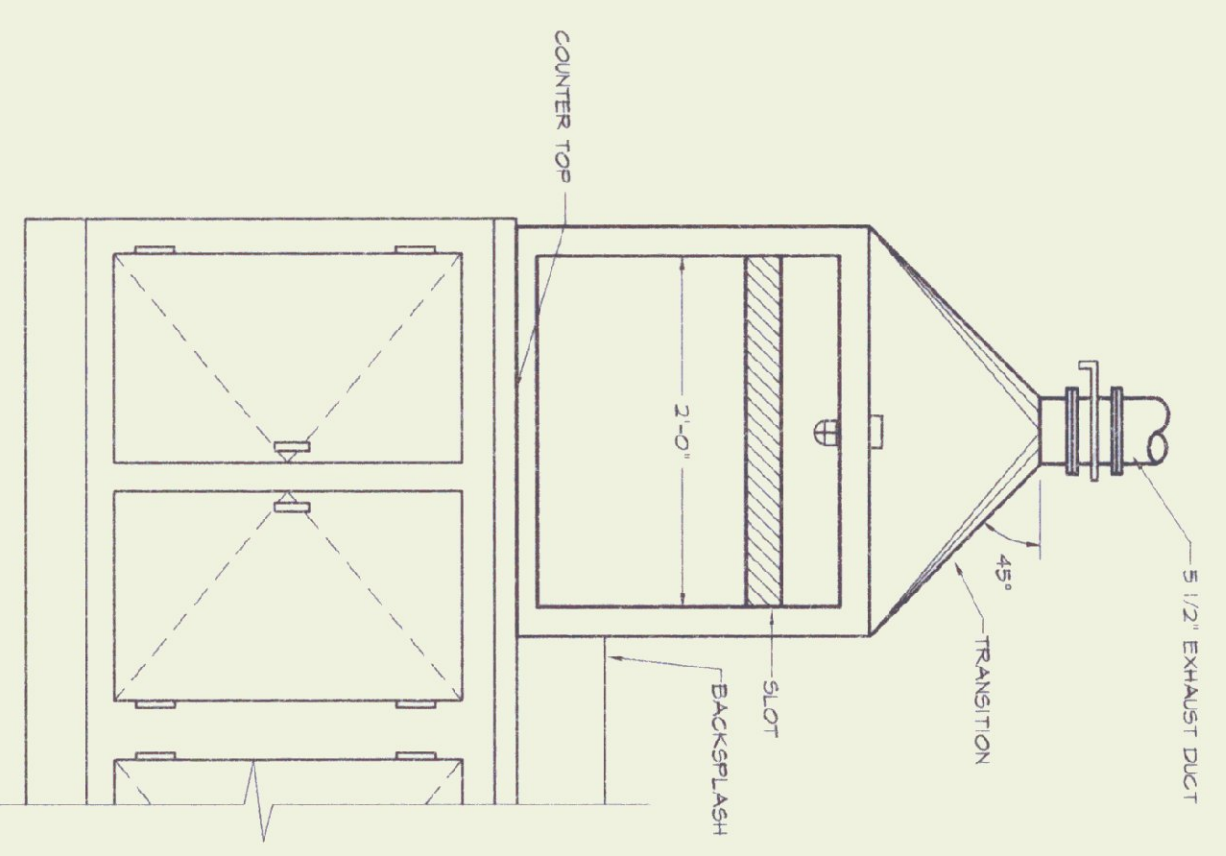


PLAN VIEW

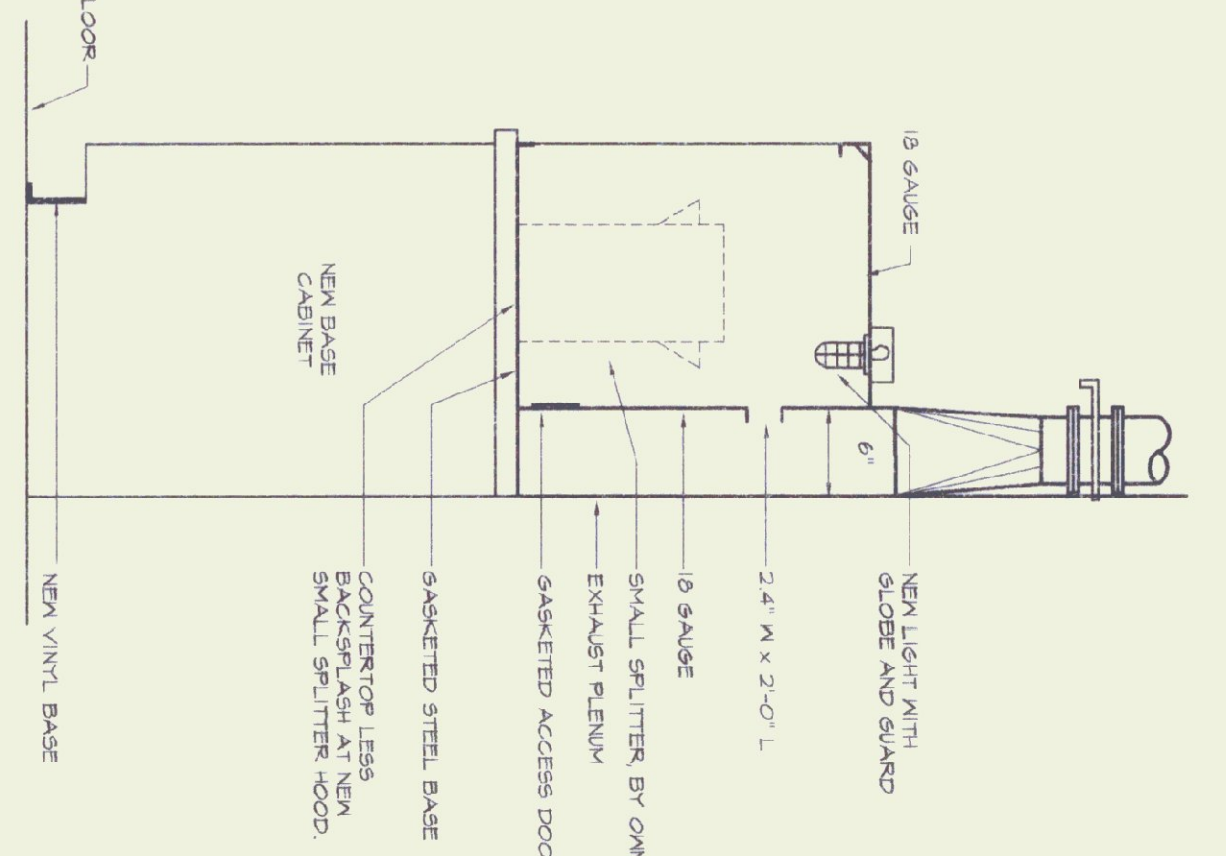
C BAG FILLING HOOD DETAIL
SCALE 1/4\"/>



ELEVATION

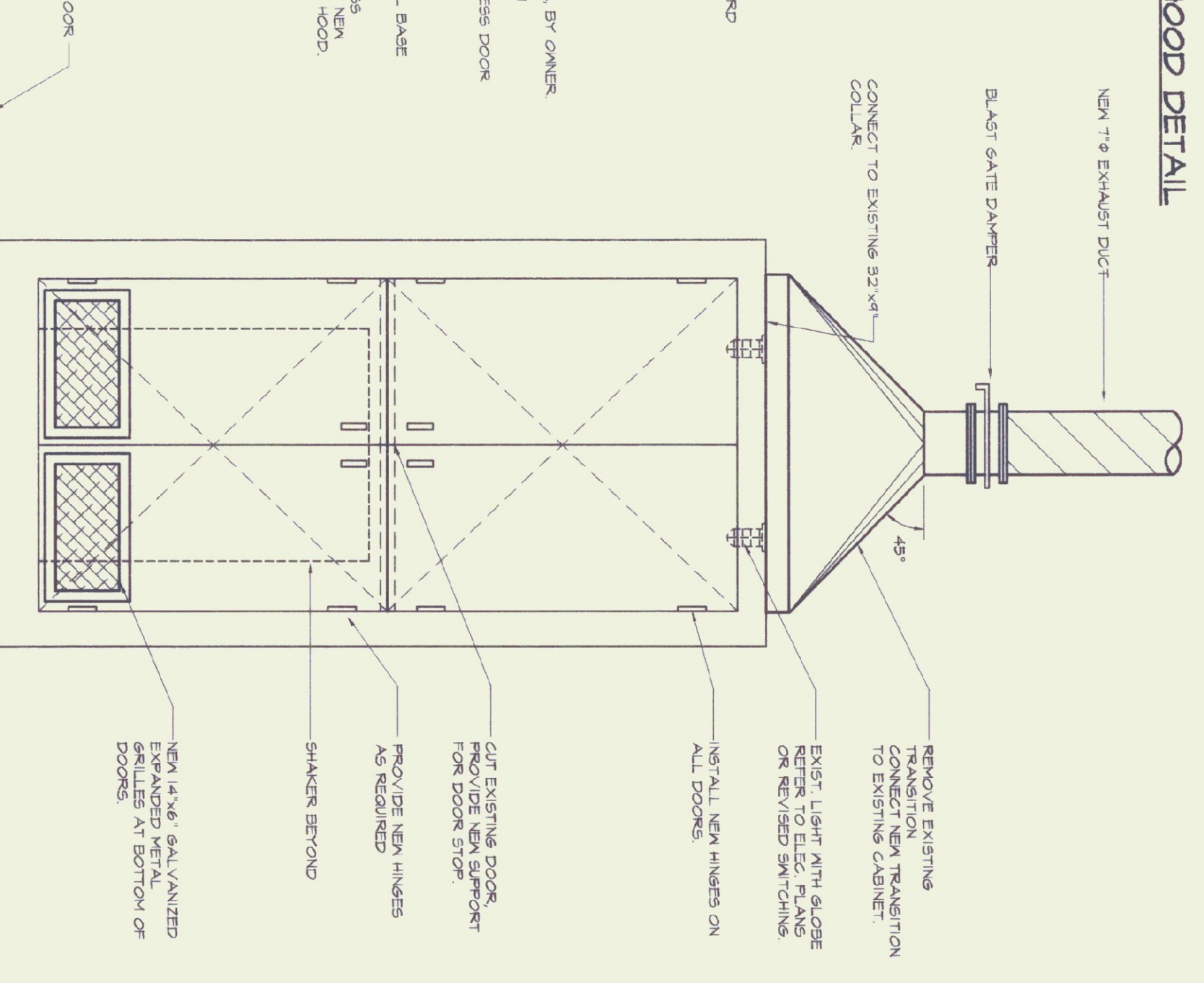


FRONT ELEVATION

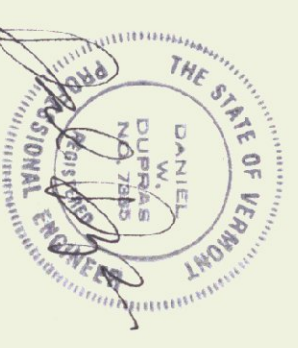


SIDE ELEVATION

D SMALL SPLITTER HOOD DETAILS
SCALE 1/4\"/>



A MODIFICATIONS TO EXISTING SHAKER CABINET
SCALE 1/4\"/>



NO.	REVISIONS	DATE
0	FOR BIDDING	1/29/98

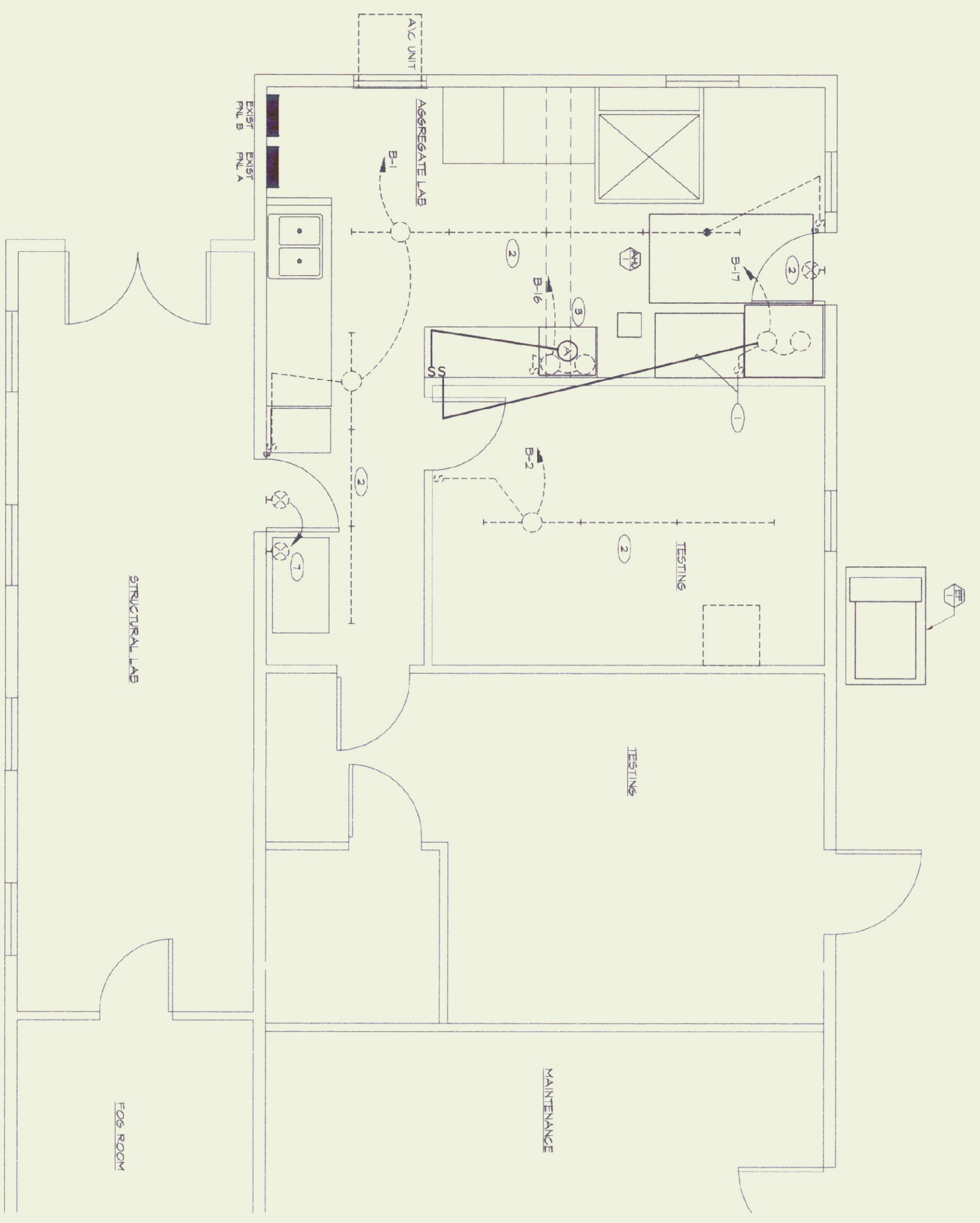
LANE ASSOCIATES
CONSULTING ENGINEERS, P.C.
51 KILLINGTON AVENUE
ROULUNDO, VERMONT 05701
TELEPHONE: (802) 241-2346
FAX/MORDEX: (802) 241-2348

HEATING, VENTILATION, & AIR CONDITIONING
PLUMBING, FIRE PROTECTION, & ELECTRICAL

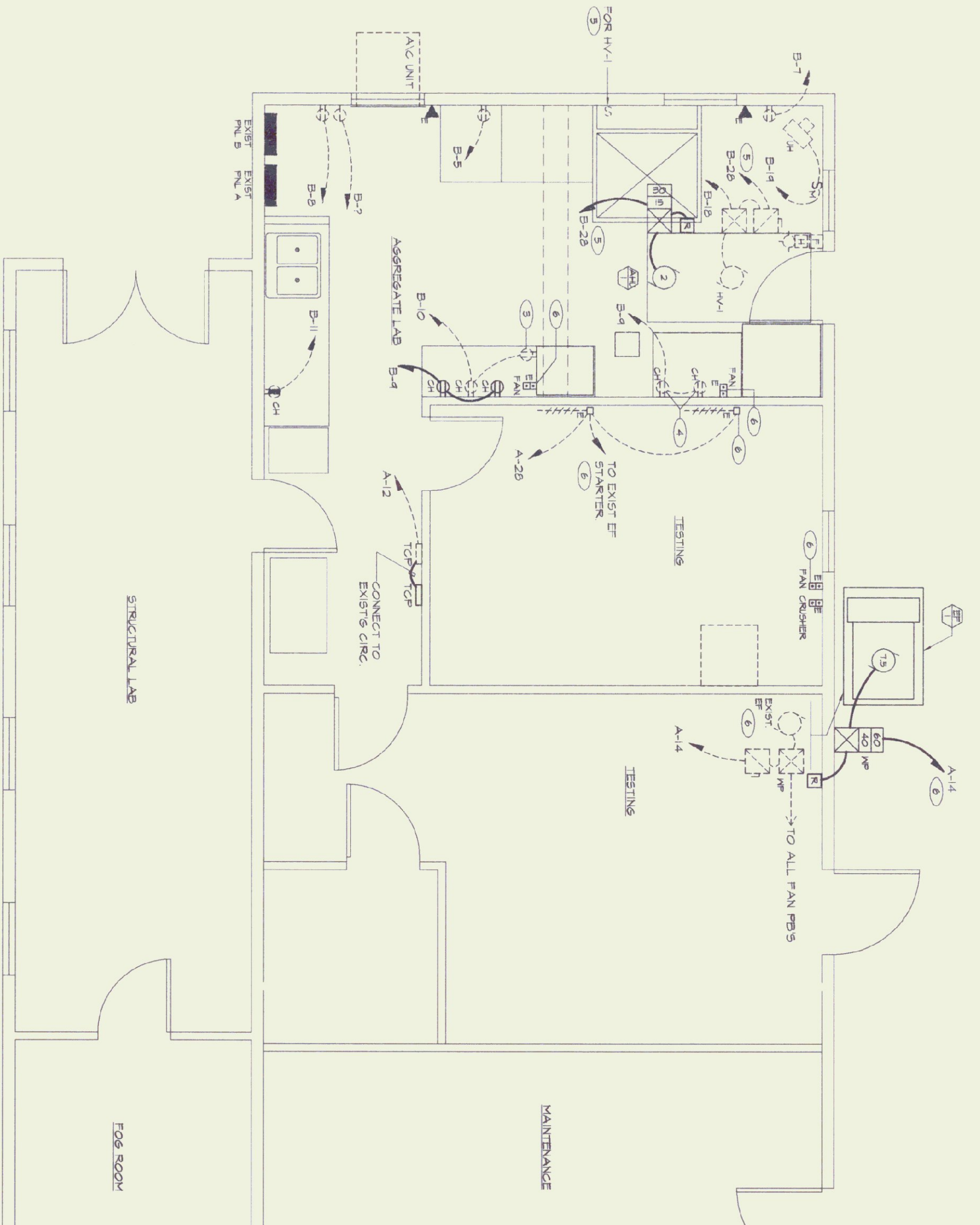
**AOI AGGREGATE LABORATORY
DUST COLLECTION SYSTEM DETAILS**

STATE OF VERMONT
DEPARTMENT OF STATE BUILDINGS
AGENCY OF ADMINISTRATION, MONITORING, VERMONT
AGENCY OF TRANSPORTATION
MATERIALS & RESEARCH LABORATORY
DUST COLLECTION SYSTEM RENOVATION
BRULIN, VERMONT

APPR.	DWD	DRWNN	TDL	SCALE	AS NOTED	PROJ. NO.
						4726-08



PARTIAL MAIN FLOOR PLAN - LIGHTING
SCALE: 1/4" = 1'-0"



PARTIAL MAIN FLOOR PLAN - POWER & SIGNAL
SCALE: 1/4" = 1'-0"

ELECTRICAL LEGEND & ABBREVIATIONS

- SURFACE MOUNTED FLUORESCENT FIXTURE TYPE AS INDICATED REFER TO SPECIFICATIONS. SUBSCRIPTS: a = SWITCHGEAR, N = DIMOUNTED NIGHT LIGHT.
- INCANDESCENT FL OR CIRCULINE FLUORESCENT OR HID FIXTURE TYPE AS INDICATED. REFER TO SPECIFICATIONS, SUBSCRIPTS: a = SWITCHGEAR, N = DIMOUNTED NIGHT LIGHT.
- WALL MOUNTED EXT. LIGHT. MH = 1'-6" UON.
- SINGLE POLE SWITCH MH = 4'-0" UON, SUBSCRIPTS: 2 = 2 POLE, 3 = 3 WAY, 4 = 4 WAY, D = DIMMER, V = VARIABLE SPEED, a = SWITCHGEAR.
- DUPLEX RECEPTACLE MH = 1'-6" UON.
- DUPLEX RECEPTACLE WITH 5 MA GFCI, MH = 1'-6" UON.
- SINGLE RECEPTACLE MH = 1'-6" UON.
- BRANCH CIRCUIT MENUS
- HOME RUN TO PANELBOARD AND CIRCUIT BREAKER INDICATED.
- PANELBOARD WITH DESIGNATION 100/240 OR 100/208 VOLTS REFER TO SCHEDULE MH = 6'-0" TO TOP.
- MOTOR WITH HORSEPOWER DESIGNATED. F = FRACTIONAL HORSEPOWER LESS THAN 1/2 HP.
- TOGGLE TYPE MOTOR DISCONNECT SWITCH HP RATED MH = 4'-6" UON OR ON EQUIPMENT.
- DISCONNECT SWITCH MH = 6'-0" OR ON EQUIPMENT. 60/40 = TRAVEL/PHASE SIZE, N = NOT USED.

NOTE: ANY SYMBOL DRAWN DASHED INDICATES EXISTING EQUIPMENT, OUTLETS AND WIRING.

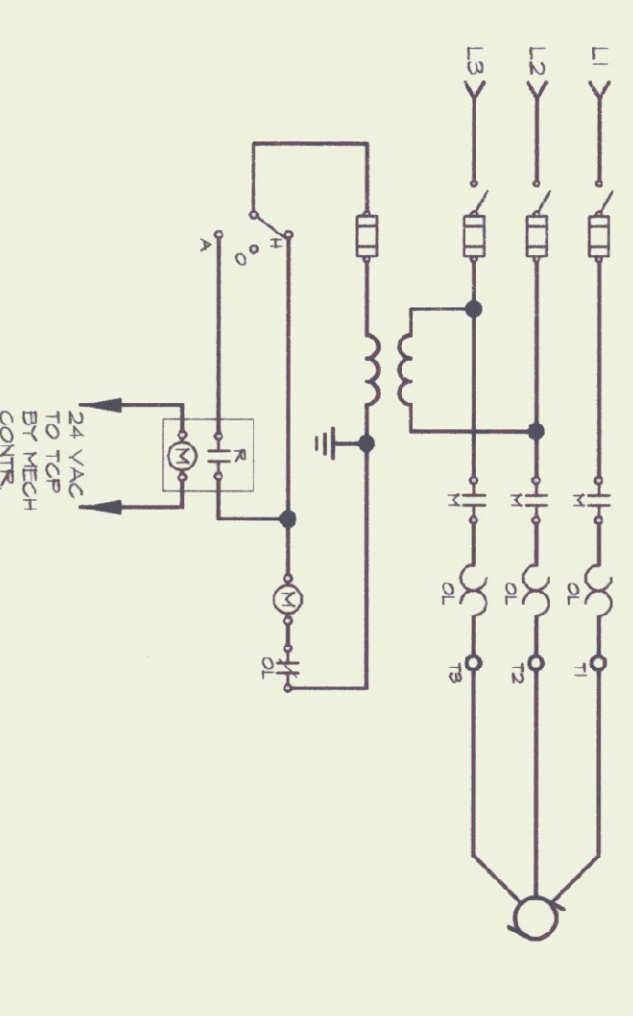
DRAWING NOTES (PLAN SYMBOL)

- ① REMOVE EXISTING SWITCH. PROVIDE NEW SWITCH AT LOCATION INDICATED AND EXTEND EXISTING WIRING.
- ② REMOVE EXISTING LIGHT FIXTURES AS REQUIRED TO ALLOW FOR NEW LIGHTING. PROVIDE NEW SUPPORTS SPACING AT EXISTING LOCATIONS AND PROVIDE NEW SUPPORTS SPACING BELOW MECHANICAL EQUIPMENT AND DUCTWORK AS REQUIRED.
- ③ REMOVE ALL WIRING AND DEVICES FOR EXISTING SMALL HOOD. REUSE CIRCUITS FOR NEW SMALL HOOD AS INDICATED.
- ④ REMOVE EXISTING RECEPTACLES AND ALL WIRING. REUSE CIRCUIT FOR NEW RECEPTACLES AS INDICATED.
- ⑤ REMOVE ALL WIRING FOR EXISTING MH, INCLUDING POWER AND CONTROL CIRCUITS, CONTROL SWITCH AND WIRING. REMOVE EXISTING SOAK-UP CIRCUIT BREAKER B-28 AND INSTALL 20A-3P BREAKER WITH 5 MA GFCI, 120 TO NEW WIRING.
- ⑥ REMOVE ALL WIRING FOR EXISTING EXHAUST FAN INCLUDING EXHAUST FAN, EXHAUST DUCT, EXHAUST MOTOR AND WIRING. REMOVE EXISTING 20A-3P CIRCUIT BREAKER A-14 AND INSTALL 20A-3P BREAKER WITH 5 MA GFCI, 120 TO NEW WIRING.
- ⑦ RELOCATE EXISTING EXT. LIGHT AND EXTEND WIRING AS REQUIRED. MOUNT TOP OF EXT. BELOW BOTTOM OF NEW DUCT WORK.

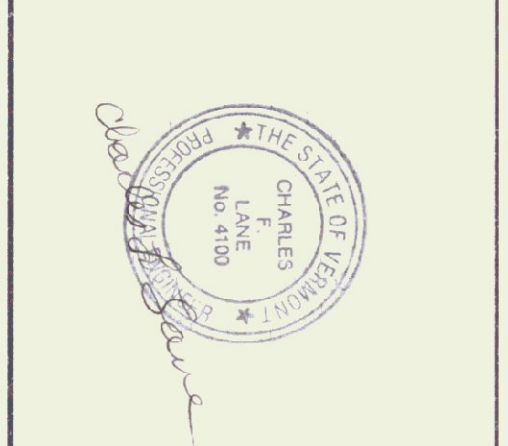
GENERAL NOTES

- ① EXISTING CONDITIONS SHOWN ON THESE PLANS ARE BASED ON DRAWINGS BY MECHANICAL ENGINEERS, INC. AND ENGINEERS' FIELD OBSERVATIONS. CONTRACTOR SHALL VERIFY EXISTING CONDITIONS AND REPORT WORK TO SMT.

MOTOR CONTROL WIRING DIAGRAM - AHU-1
NOT TO SCALE



- NOTES
- 1. BONDING CONDUCTOR NOT SHOWN.
- 2. SYMBOLS FOR FPL.



NO.	REVISIONS	DATE
0	FOR BIDDING	1/29/99

LANE ASSOCIATES
CONSULTING ENGINEERS, P.C.

HEATING, VENTILATION, & AIR CONDITIONING, PLUMBING, FIRE PROTECTION, & ELECTRICAL

CHARLES F. LANE, P.E.
DANIEL W. DUBROK, P.E.
WILLIAM C. LANE, P.E.

51 KILLINGTON AVENUE
RITLAND, VERMONT 05701
TELEPHONE: (802) 747-3346
FAX/MODEM: (802) 747-3356

DUST EXHAUST SYSTEM - ELECTRICAL

STATE OF VERMONT
DEPARTMENT OF STATE BUILDINGS
AGENCY OF ADMINISTRATION, MONTELEONE, VERMONT

AGENCY OF TRANSPORTATION
MATERIALS & RESEARCH LABORATORY
DUST COLLECTION SYSTEM RENOVATION
BERLIN, VERMONT

APPRO. C.F.L. DRAWN: B.K.L. SCALE: AS NOTED PROJ. NO.: 9136-02

E 1