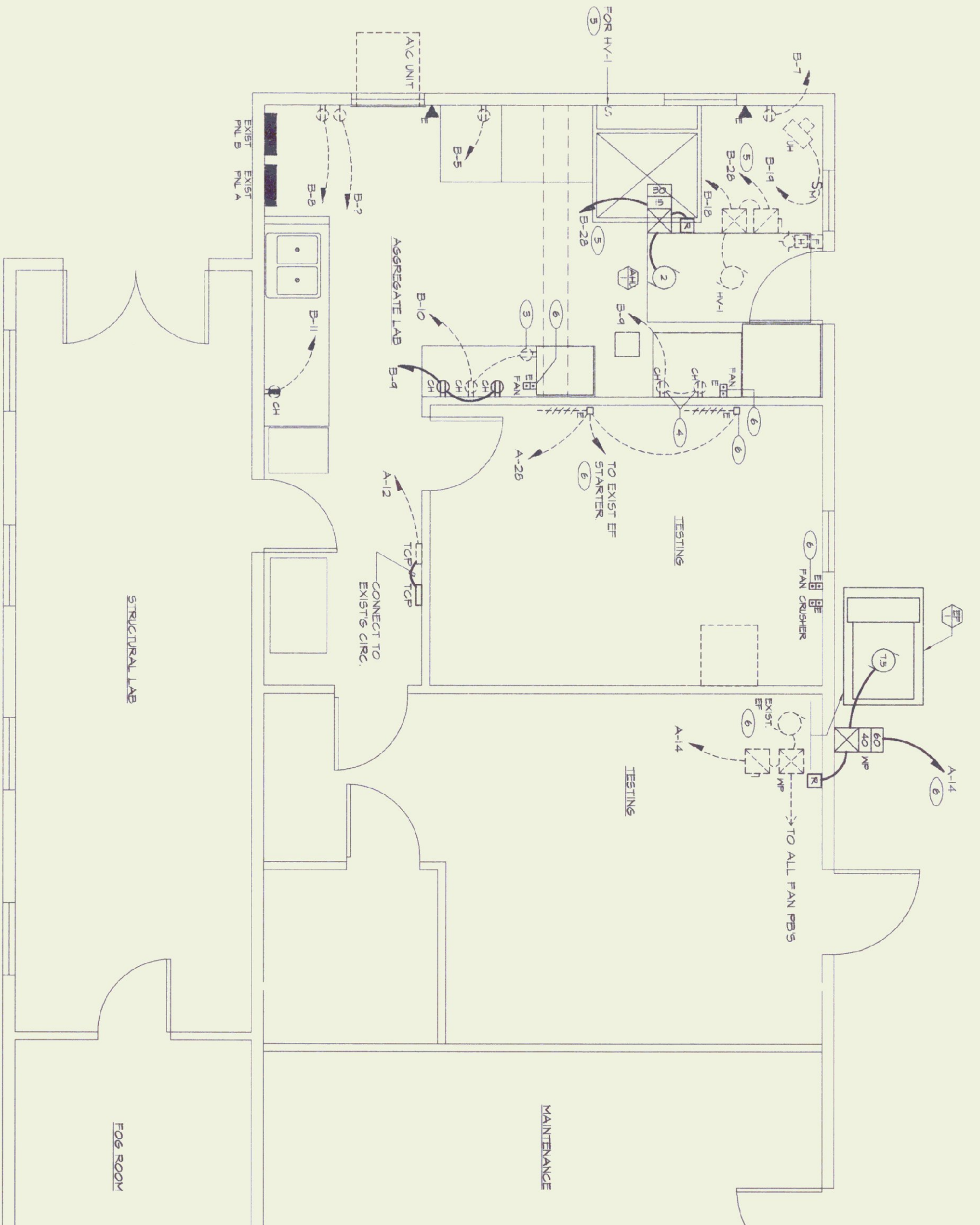


PARTIAL MAIN FLOOR PLAN - LIGHTING
SCALE 1/4" = 1'-0"



PARTIAL MAIN FLOOR PLAN - POWER & SIGNAL
SCALE 1/4" = 1'-0"

ELECTRICAL LEGEND & ABBREVIATIONS

- SURFACE MOUNTED FLUORESCENT FIXTURE TYPE AS INDICATED REFER TO SPECIFICATIONS. SUBSCRIPTS: a = SWITCHGEAR, N = DIMOUNTED NIGHT LIGHT.
- INCANDESCENT FL OR CIRCUING FLUORESCENT OR HID FIXTURE TYPE AS INDICATED. REFER TO SPECIFICATIONS, SUBSCRIPTS: a = SWITCHGEAR, N = DIMOUNTED NIGHT LIGHT.
- ⊗ WALL MOUNTED EXT. LIGHT. MH = 1'-6" UON.
- S₂ SINGLE POLE SWITCH MH = 4'-0" UON, SUBSCRIPTS: 2 = 2 POLE, 3 = 3 WAY, 4 = 4 WAY, D = DIMMER, V = VARIABLE SPEED, a = SWITCHGEAR.
- ⊕ DIPLEX RECEPTACLE MH = 1'-6" UON.
- ⊕ DIPLEX RECEPTACLE WITH 5 MA GFCI, MH = 1'-6" UON.
- ⊕ SINGLE RECEPTACLE MH = 1'-6" UON.
- BRANCH CIRCUIT WIRING
- HOME RUN TO PANELBOARD AND CIRCUIT BREAKER INDICATED
- PANELBOARD WITH DESIGNATION 100/240 OR 100/200 VOLTS REFER TO SCHEDULE MH = 6'-0" TO TOP.
- MOTOR WITH HORSEPOWER DESIGNATED. F = FRACTIONAL HORSEPOWER LESS THAN 1/2 HP.
- Ⓚ TOGGLE TYPE MOTOR DISCONNECT SWITCH HP RATED MH = 4'-6" UON OR ON EQUIPMENT.
- Ⓚ DISCONNECT SWITCH MH = 6'-0" OR ON EQUIPMENT. 60/40 = TRAVEL/PHASE SIZE, N = NOT USED.

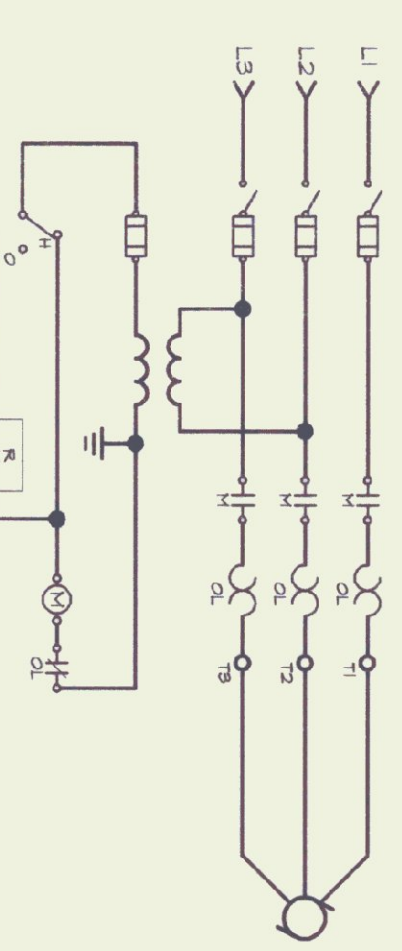
NOTE: ANY SYMBOL DRAWN DASHED INDICATES EXISTING EQUIPMENT, OUTLETS AND WIRING.

DRAWING NOTES (PLAN SYMBOL)

- ① REMOVE EXISTING SWITCH. PROVIDE NEW SWITCH AT LOCATION INDICATED AND EXTEND EXISTING WIRING.
- ② REMOVE EXISTING LIGHT FIXTURES AS REQUIRED TO ALLOW INSTALLATION OF NEW FIXTURES AT EXISTING LOCATIONS AND PROVIDE NEW SUPPORTS SPACING BELOW MECHANICAL EQUIPMENT AND DUCTWORK AS REQUIRED.
- ③ REMOVE ALL WIRING AND DEVICES FOR EXISTING SMALL HOOD. REUSE CIRCUITS FOR NEW SMALL HOOD AS INDICATED.
- ④ REMOVE EXISTING RECEPTACLES AND ALL WIRING. REUSE CIRCUIT FOR NEW RECEPTACLES AS INDICATED.
- ⑤ REMOVE ALL WIRING FOR EXISTING MH, INCLUDING POWER AND CONTROL CIRCUITS, CONTROL SWITCH AND WIRING. REMOVE EXISTING SOAK-UP CIRCUIT BREAKER B-28 AND INSTALL 20A-3P BREAKER WITH 5 MA GFCI, 120 TO NEW MH.
- ⑥ REMOVE ALL WIRING FOR EXISTING EXHAUST FAN INCLUDING EXHAUST FAN, EXHAUST DUCT, EXHAUST MOTOR AND WIRING. REMOVE EXISTING 20A-3P CIRCUIT BREAKER A-14 AND INSTALL 20A-3P BREAKER WITH 5 MA GFCI, 120 TO NEW FAN.
- ⑦ RELOCATE EXISTING EXT. LIGHT AND EXTEND WIRING AS REQUIRED. MOUNT TOP OF EXT. BELOW BOTTOM OF NEW DUCT WORK.

GENERAL NOTES

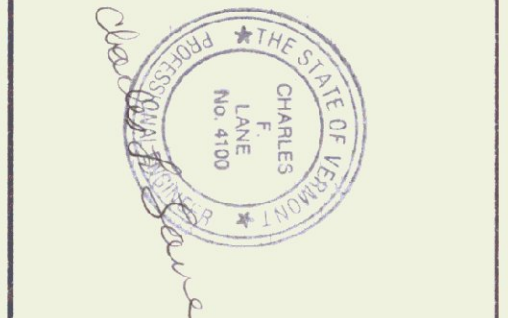
- ① EXISTING CONDITIONS SHOWN ON THESE PLANS ARE BASED ON DRAWINGS BY MECHANICAL ENGINEERS, ELECTRICAL ENGINEERS, PLUMBING ENGINEERS, AND OTHER PROFESSIONALS AND SHOULD REFER TO SET.



MOTOR CONTROL WIRING DIAGRAM - AHU-1
NOT TO SCALE
NOTES:
1. BONDING CONDUCTOR NOT SHOWN.
2. SYMBOLS FOR SET.

DUST EXHAUST SYSTEM - ELECTRICAL

STATE OF VERMONT
DEPARTMENT OF STATE BUILDINGS
AGENCY OF ADMINISTRATION, MONTELEONE, VERMONT
AGENCY OF TRANSPORTATION
MATERIALS & RESEARCH LABORATORY
DUST COLLECTION SYSTEM RENOVATION
BERLIN, VERMONT



NO.	REVISIONS	DATE
0	FOR BIDDING	1/29/99

LANE ASSOCIATES
CONSULTING ENGINEERS, P.C.
HEATING, VENTILATION, & AIR CONDITIONING, PLUMBING, FIRE PROTECTION, & ELECTRICAL
CHARLES F. LANE, P.E.
DANIEL W. DUBOIS, P.E.
WILLIAM C. LANE, P.E.
51 KILLINGTON AVENUE
RITLAND, VERMONT 05701
TELEPHONE: (802) 747-3346
FAX/MODEM: (802) 747-3356

APPRO.	CTL	DRAWN.	SCALE	AS NOTED	PROJ. NO.
					9136-08