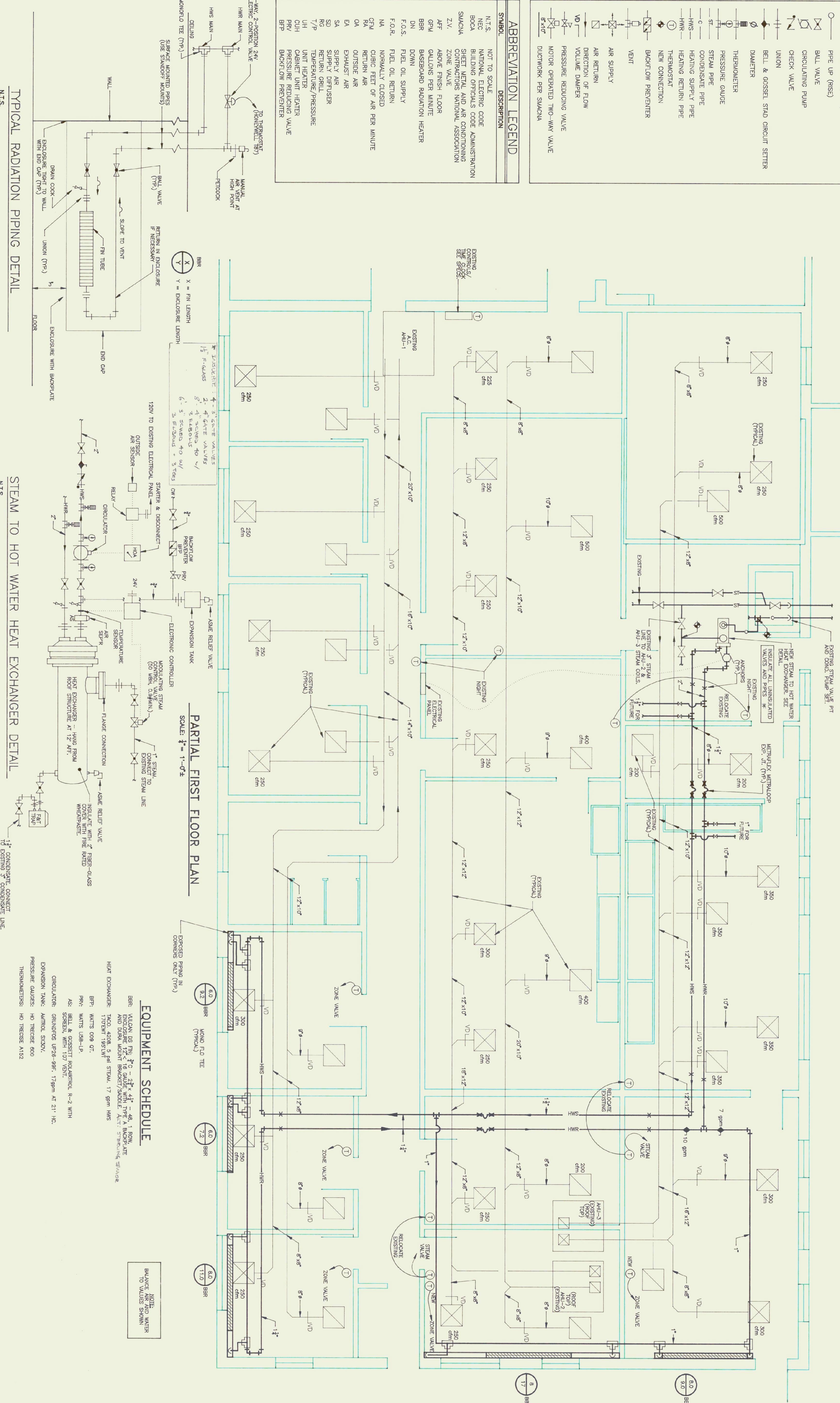


SYMBOLS LEGEND

SYMBOL	DESCRIPTION
	PIPE DOWN (DROP)
	PIPE UP (RISE)
	BALL VALVE
	CIRCULATING PUMP
	CHECK VALVE
	UNION
	BELL & GOSSETT STATIC CIRCUIT SETTER
	DIAMETER
	THERMOMETER
	PRESSURE GAUGE
	STEAM PIPE
	CONDENSATE PIPE
	HEATING SUPPLY PIPE
	HEATING RETURN PIPE
	THERMOSTAT
	NEW CONNECTION
	BACKFLOW PREVENTER
	VENT
	AIR SUPPLY
	AIR RETURN
	DIRECTION OF FLOW
	VOLUME DAMPER
	PRESSURE REDUCING VALVE
	MOTOR OPERATED TWO-WAY VALVE
	DUCTWORK PER SIACNA

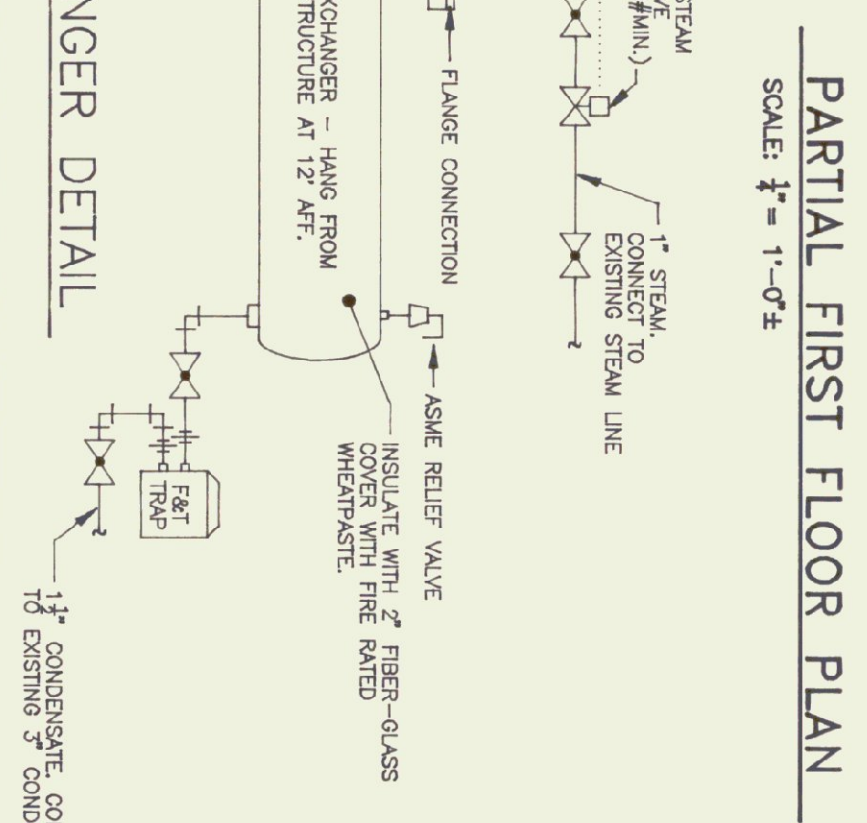
ABBREVIATION LEGEND

SYMBOL	DESCRIPTION
N.T.S.	NOT TO SCALE
NEC	NATIONAL ELECTRIC CODE
BOCA	BUILDING OFFICIALS CODE ADMINISTRATION
SIACNA	SHEET METAL AND AIR CONDITIONING CONTRACTORS NATIONAL ASSOCIATION
Z.V.	ZONE VALVE
AFF	ABOVE FINISH FLOOR
GP/M	GALLONS PER MINUTE
BBR	BASEBOARD RADIATION HEATER
DN	DOWN
F.O.S.	FUEL OIL SUPPLY
F.O.R.	FUEL OIL RETURN
N.O.C.	NORMALLY CLOSED
MA	CUBIC FEET OF AIR PER MINUTE
GRM	RETURN AIR
OA	OUTSIDE AIR
EA	EXHAUST AIR
SA	SUPPLY AIR
SD	SUPPLY DIFFUSER
RG	RETURN GRILL
T/P	TEMPERATURE/PRESSURE
UH	UNIT HEATER
CUH	CABINET UNIT HEATER
PRV	PRESSURE REDUCING VALVE
BFP	BACKFLOW PREVENTER



TYPICAL RADIATION PIPING DETAIL
N.T.S.

STEAM TO HOT WATER HEAT EXCHANGER DETAIL
N.T.S.



EQUIPMENT SCHEDULE

BBR: VULCAN DS F10 2" x 2" x 4 1/2" - 48" L, 1" ROW, AND DUAL MOUNT BRACKET/SIDING. SEE SPEC. FOR DETAILS.

HEAT EXCHANGER: 1400, 4208, 5 PSI STEAM, 17 gpm HWS

BFP: WATTS 009 07'

PRV: WATTS USB-1P

AS: BELL & GOSSETT RADIATOR R-2 WITH SCREEN, WITH 107 VENT

CIRCULATOR: GRUNDOS UP26-99F, 17 gpm AT 21' HC.

EXPANSION TANK: AMROL SX20V, PRESSURE GAUGE: HO TRESCO 600

THERMOMETERS: HO TRESCO A152

MONO FLO TEE (TYPICAL)

NOTE: BALANCE AIR AND WATER TO VALVES SHOWN