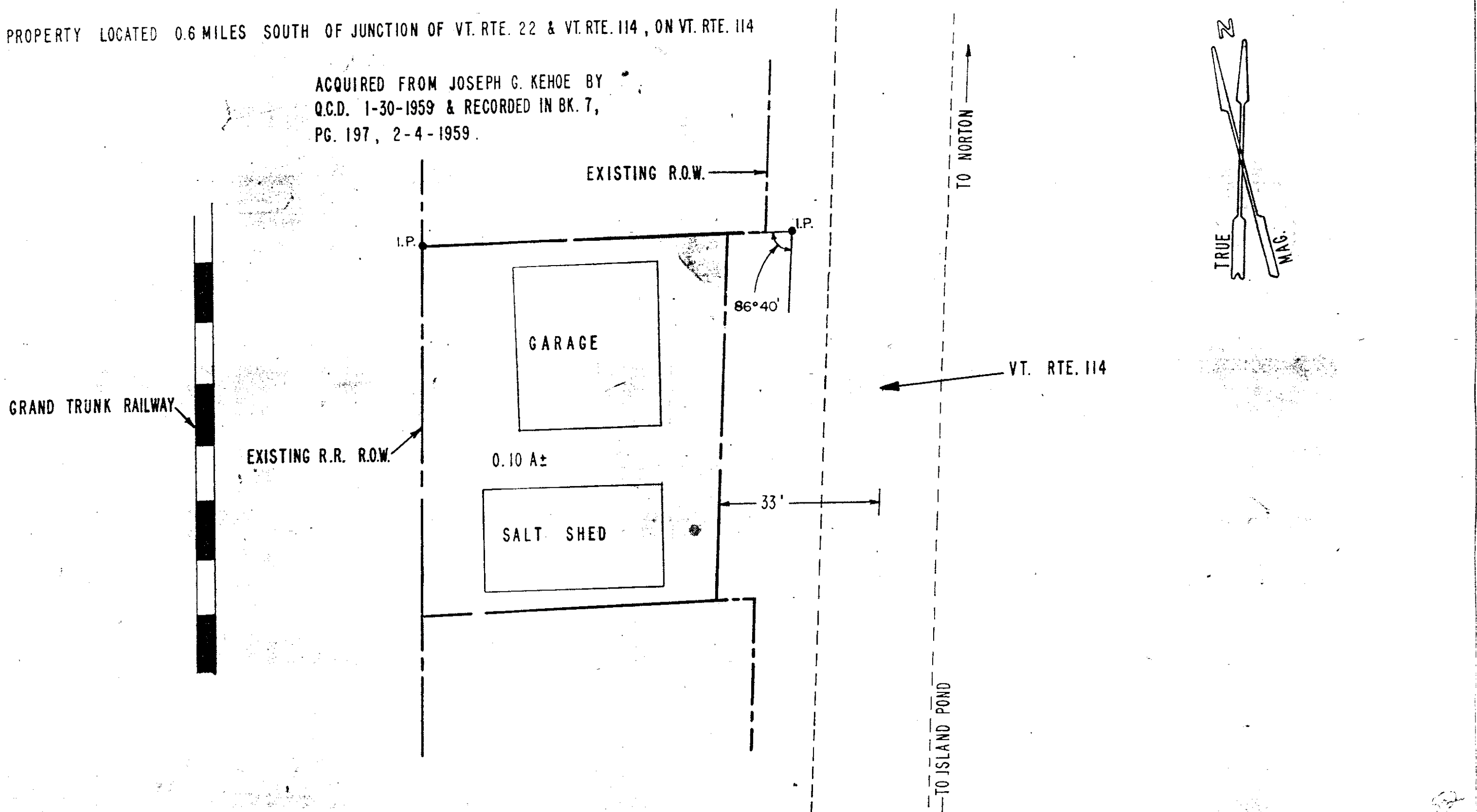
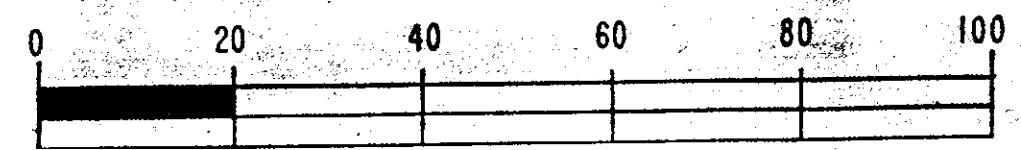


PROPERTY LOCATED 0.6 MILES SOUTH OF JUNCTION OF VT. RTE. 22 & VT. RTE. 114, ON VT. RTE. 114

ACQUIRED FROM JOSEPH G. KEHOE BY
Q.C.D. 1-30-1959 & RECORDED IN BK. 7,
PG. 197, 2-4-1959.



SCALE 1" = 20'



STATE OF VERMONT DEPT. OF HIGHWAYS		
TOWN OF NORTON		
VT. RTE. 114 MAINT. AREA		
APPROX. SCALE 1"=20'	DATE 7-27-76	DRAWN BY KDP