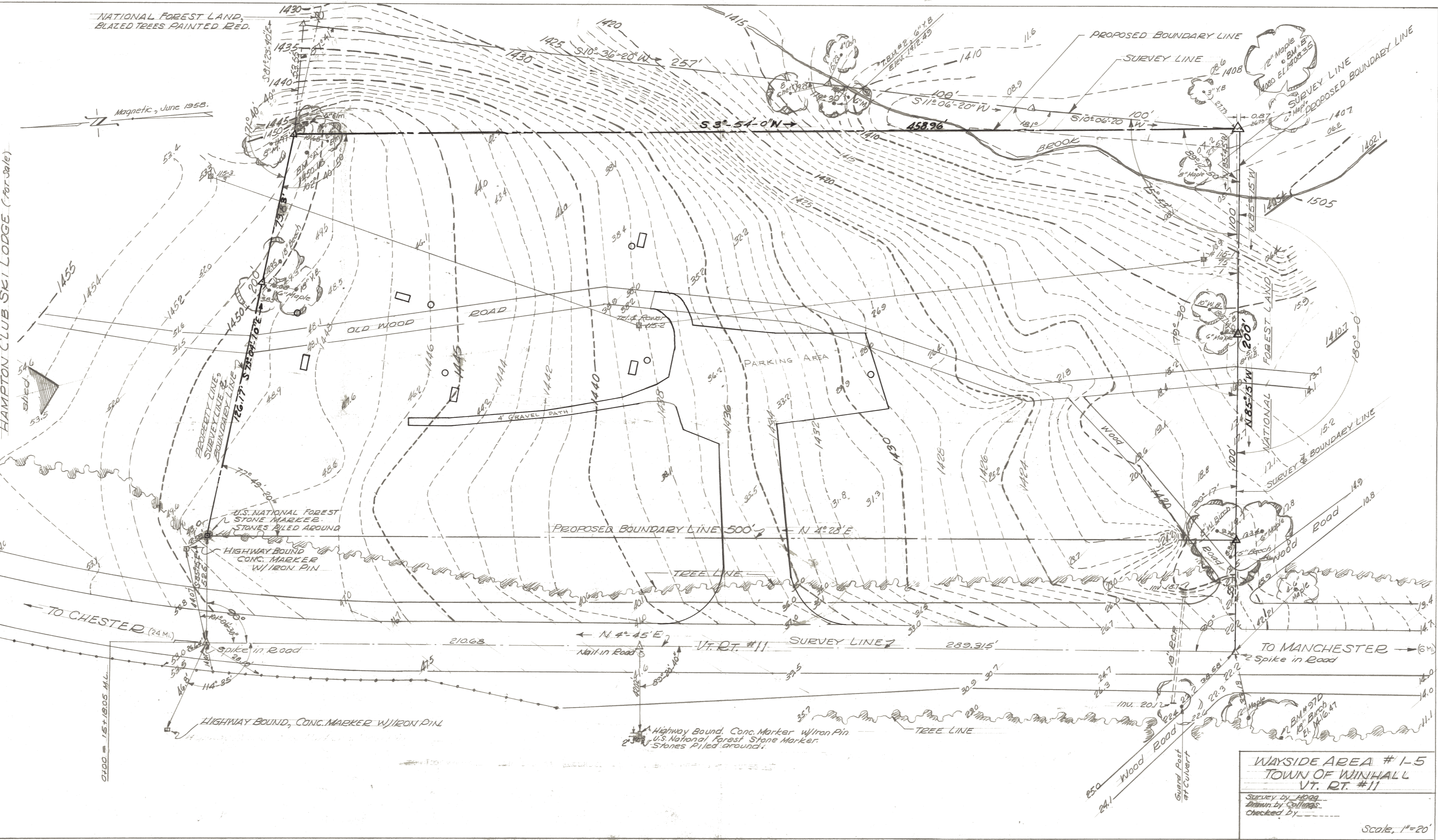


NATIONAL FOREST LAND,  
BLAZED TREES PAINTED RED.

Magnetic, June 1958.

HAMPTON CLUB SKI LODGE (For Sale)



**WAYSIDE AREA # 1-5**  
**TOWN OF WINHALL**  
**VT. RT. # 11**

Survey by HOGG  
 Drawn by COLLINGS  
 Checked by \_\_\_\_\_

Scale, 1" = 20'