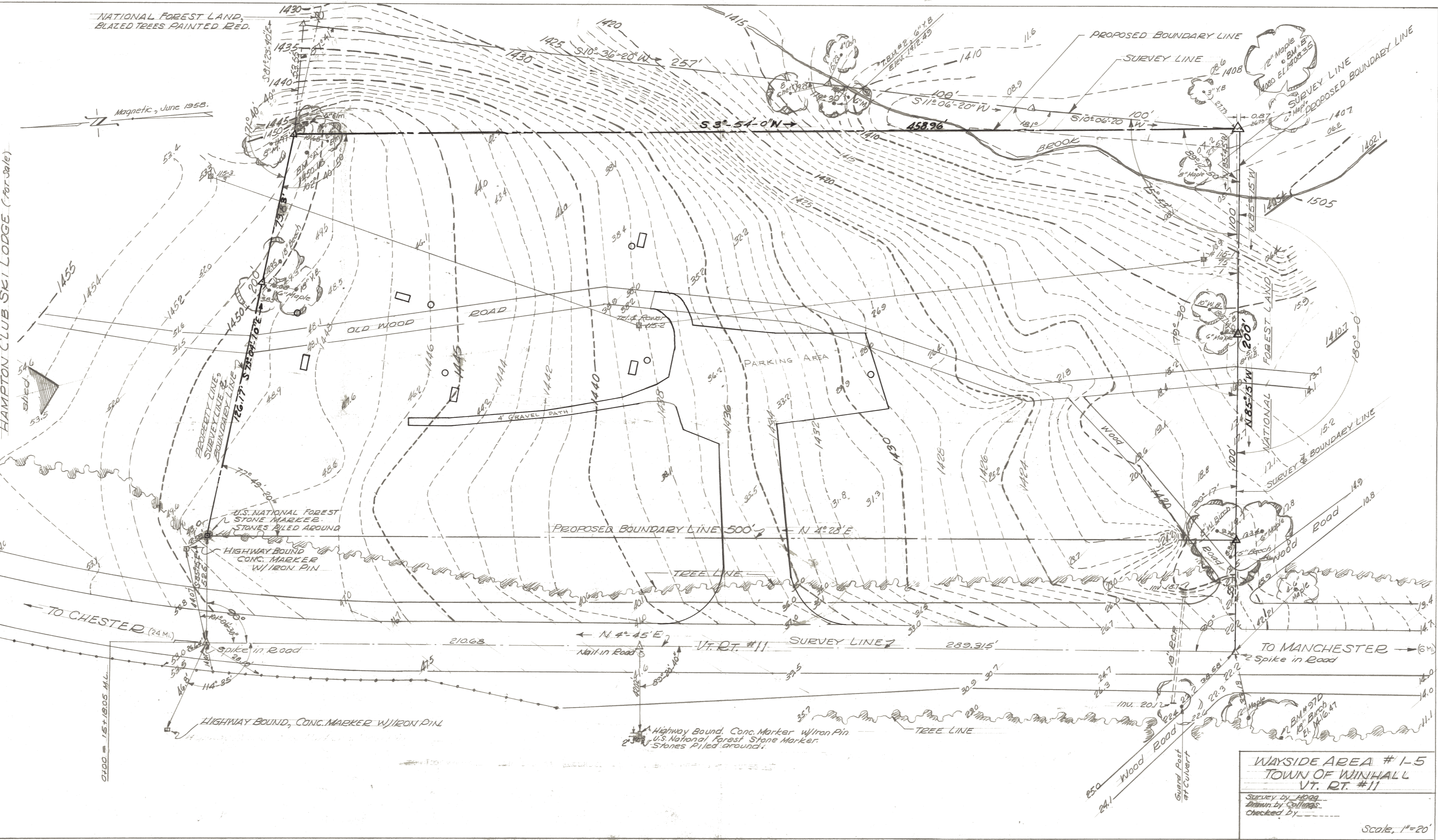


NATIONAL FOREST LAND,
BLAZED TREES PAINTED RED.

Magnetic, June 1958.

HAMPTON CLUB SKI LODGE (For Sale)



TO CHESTER (24 MI.)

TO MANCHESTER (6 MI.)

HIGHWAY BOUND, CONC. MARKER W/ IRON PIN

Highway Bound, Conc. Marker w/ Iron Pin
U.S. National Forest Stone Marker
Stones Piled around

WAYSIDE AREA # 1-5
TOWN OF WINHALL
VT. RT. # 11

Survey by HOGG
Drawn by COLLINGS
Checked by _____

Scale, 1" = 20'