

State of Vermont  
Department of Buildings & General Services  
BLOOMFIELD STATE HIGHWAY GARAGE  
44' x 64' SAND/SALT SHED  
Bloomfield, Vermont

AGENCY OF ADMINISTRATION  
DEPT. OF BUILDINGS & GENERAL SERVICES  
2 GOVERNOR AIKEN AVENUE  
MONTPELIER, VERMONT 05633-5801  
R. TASHA WALLIS, COMMISSIONER

AGENCY OF TRANSPORTATION  
NATIONAL LIFE BUILDING  
MONTPELIER, VERMONT 05633-5001  
DAWN TERRILL, SECRETARY



James Douglas  
Governor

July 2006

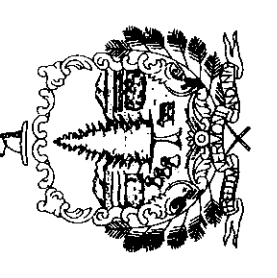
INDEX OF SHEETS

A-1 PLAN, DETAILS, AND ELEVATIONS  
A-2 SECTIONS

SET # 11  
DO NOT COPY



STATE OF VERMONT  
 Department of Buildings  
 and General Services  
 Agency of Administration  
 Montpelier, Vermont



VERMONT

AGENCY OF TRANSPORTATION  
 NEW 44' x 64' SALT / SAND SHED  
 PLAN, DETAILS & ELEVATIONS

BLOOMFIELD

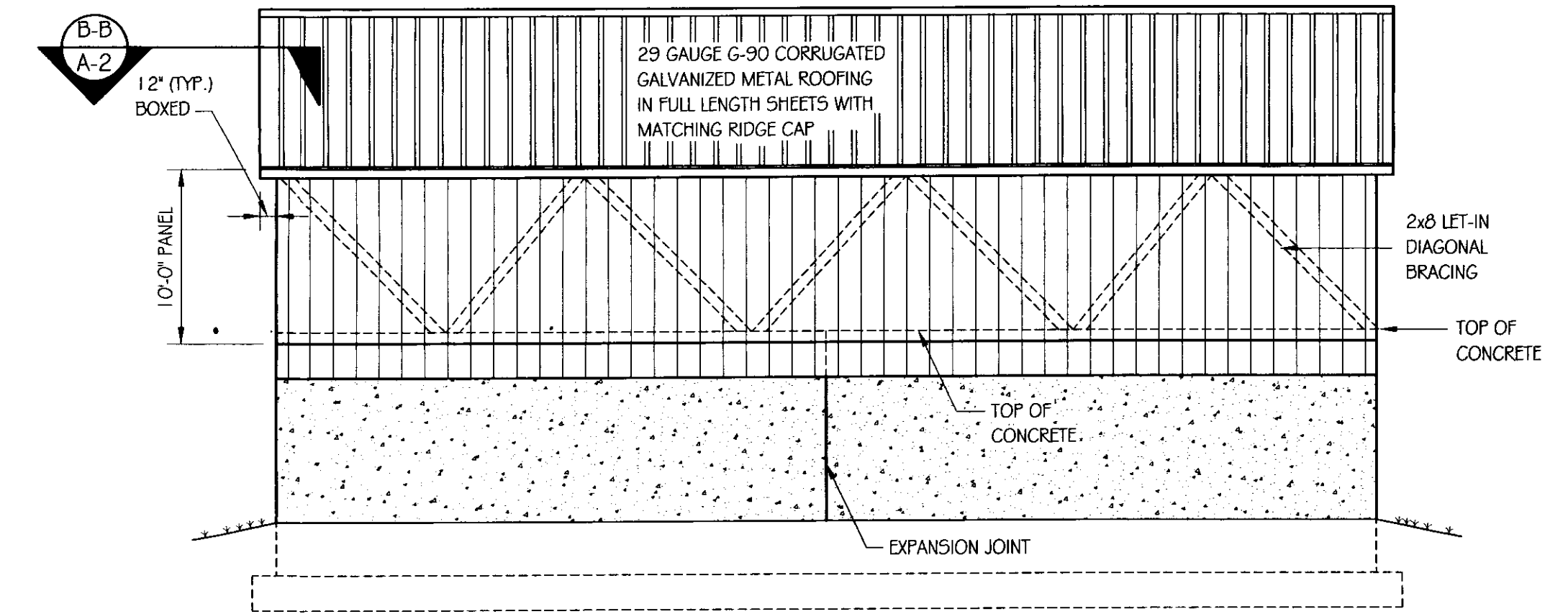
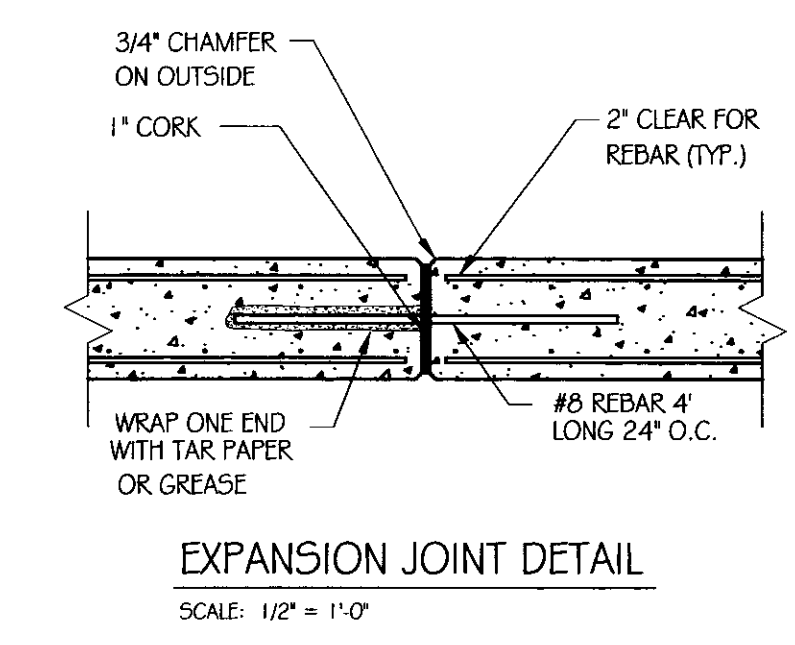
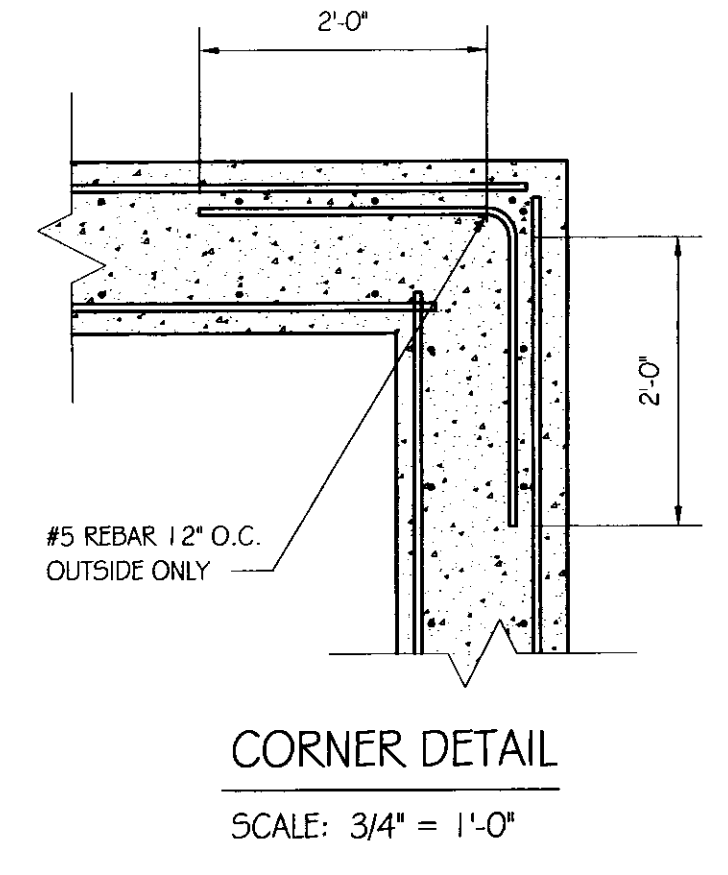
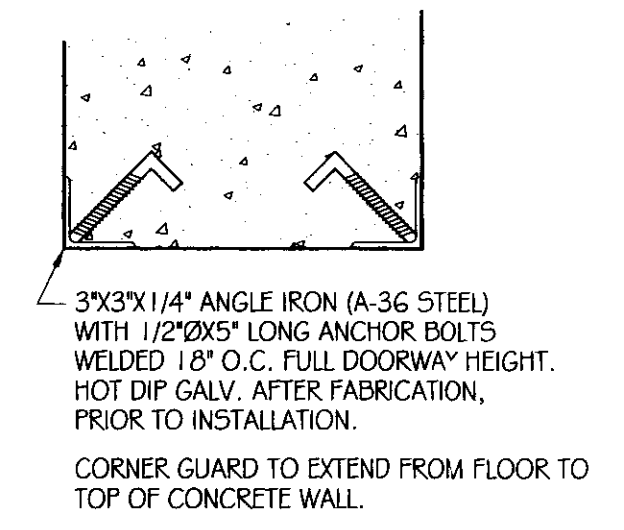
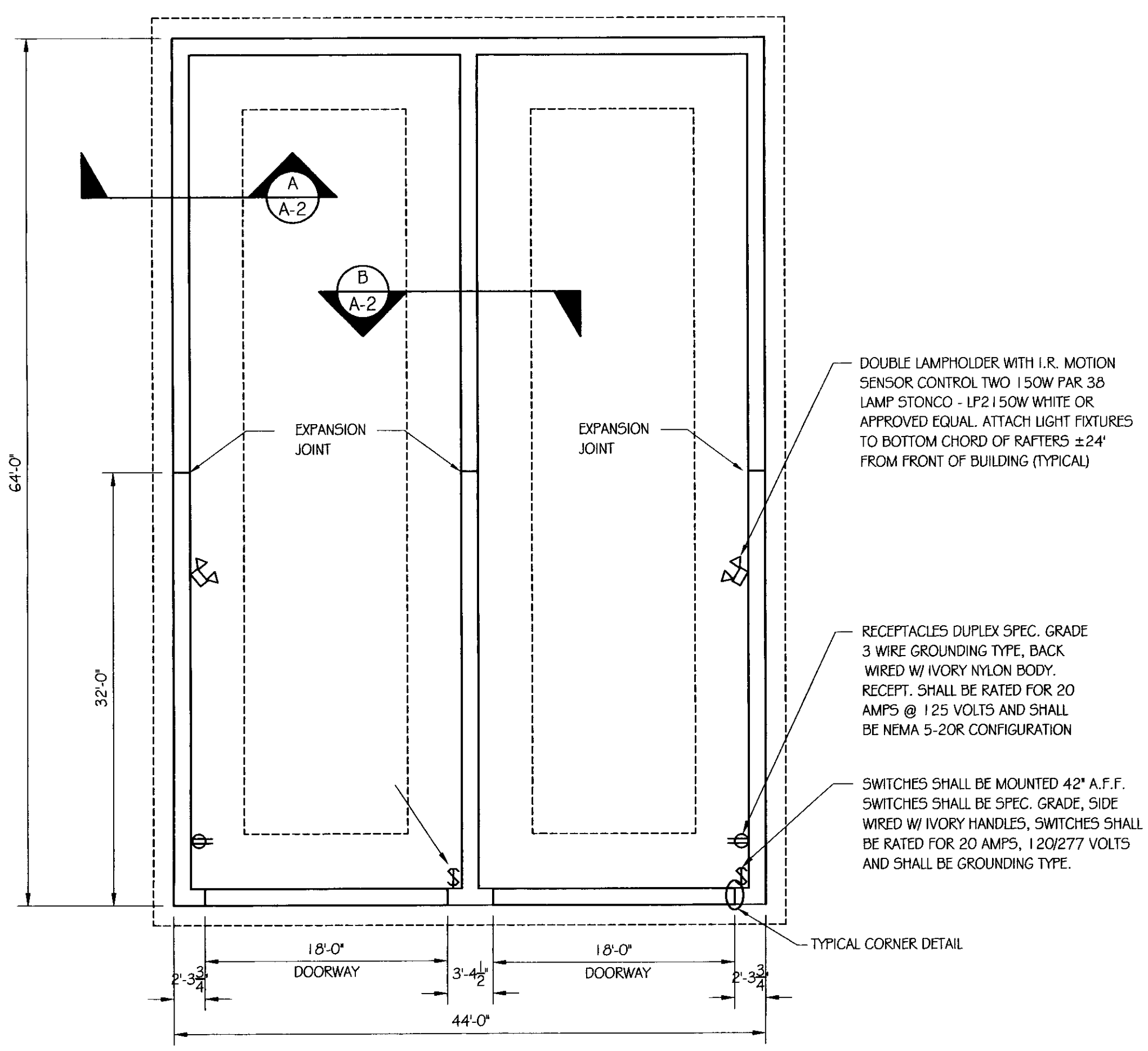
REVISIONS

SCALE:	AS NOTED
DATE:	JULY 2006
DRAWN BY:	S.K. Janawicz
APPR. BY:	R. BARRY

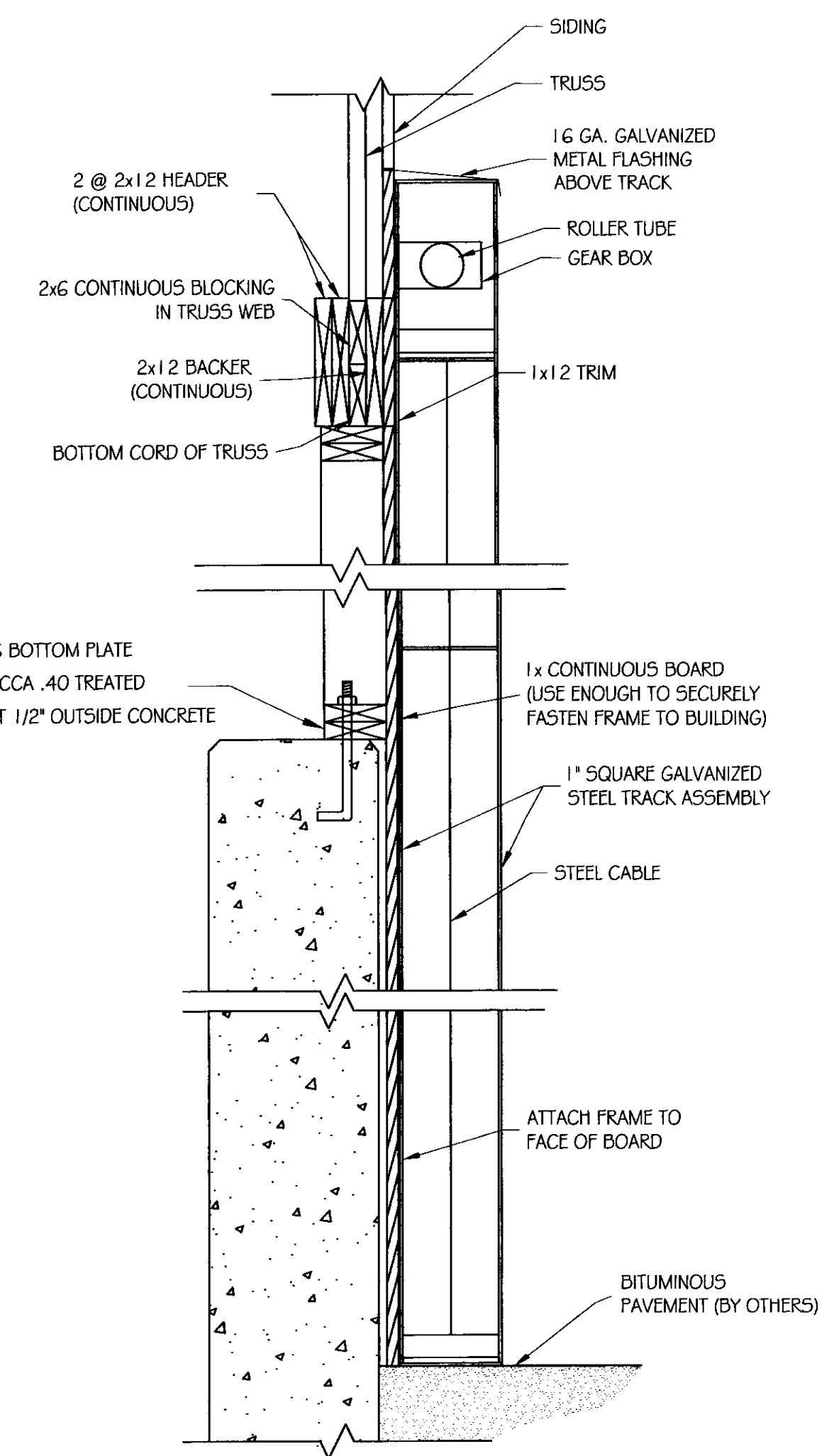
AGENCY OF TRANSPORTATION  
 NEW 44' x 64' SALT / SAND SHED  
 PLAN, DETAILS & ELEVATIONS

A-1

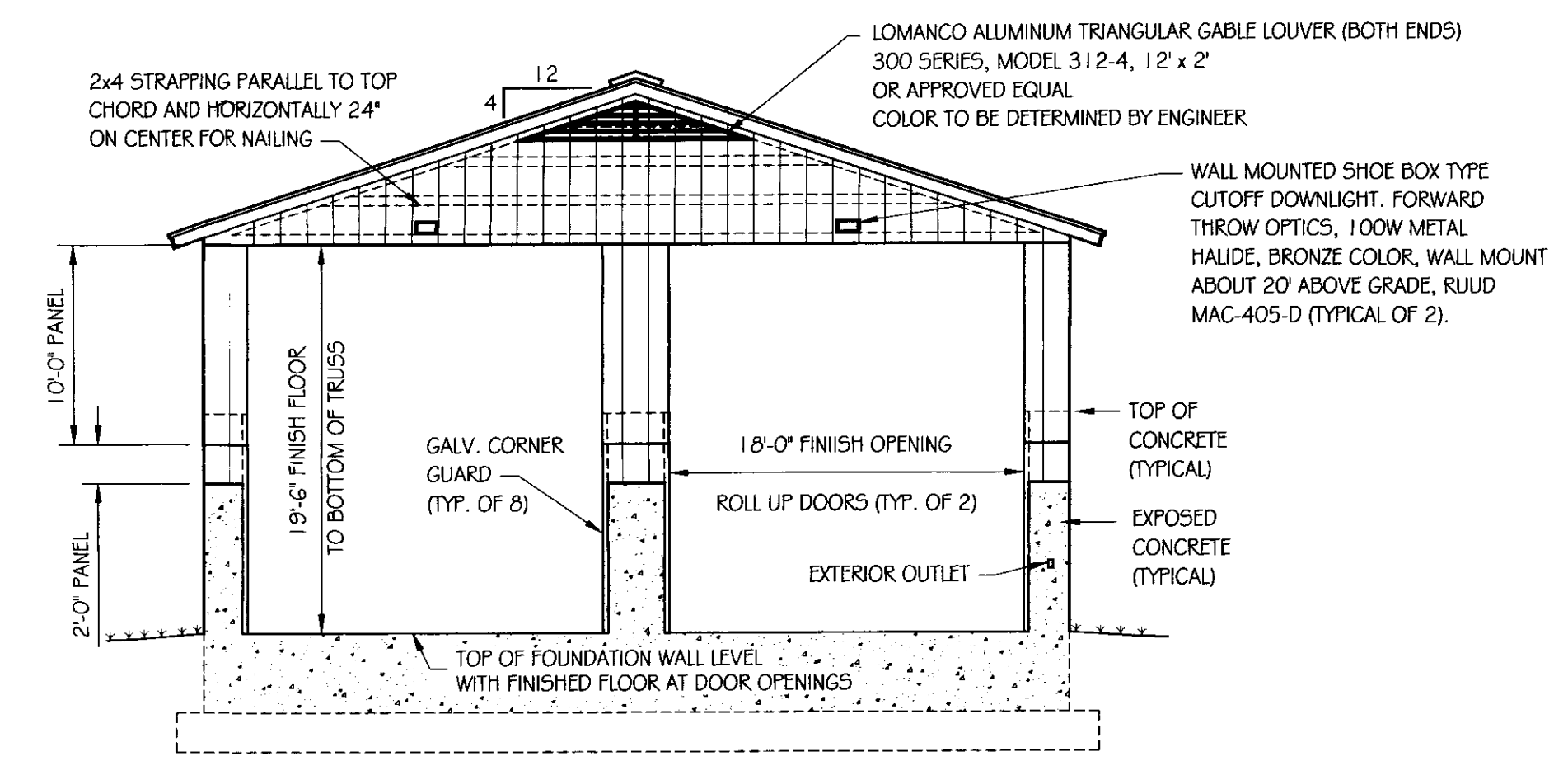
1 OF 2



SIDE ELEVATION  
 SCALE: 1/8" = 1'-0"

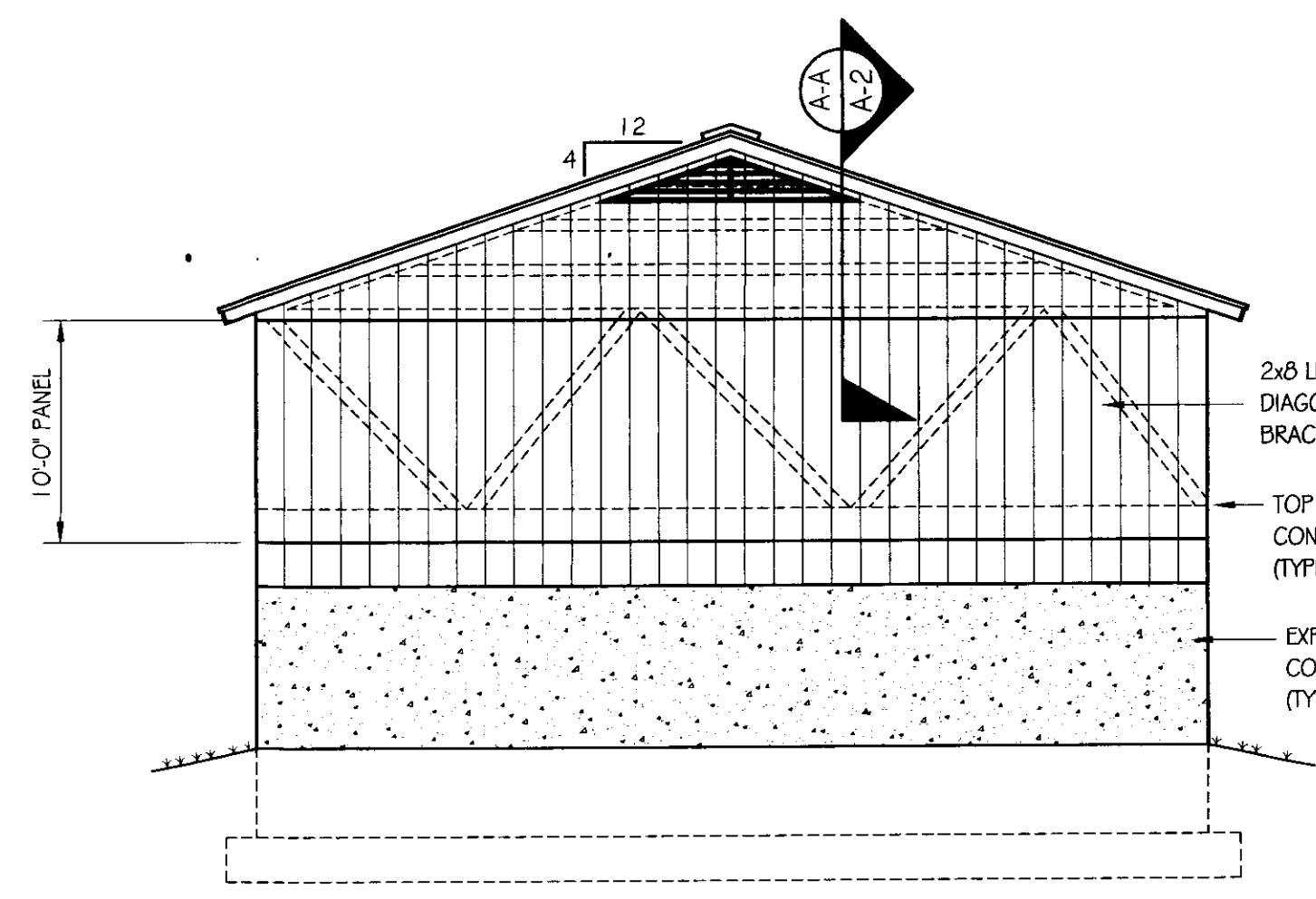


CURTAIN TRACK & GUIDE DETAIL  
 SCALE: 1" = 1'-0"

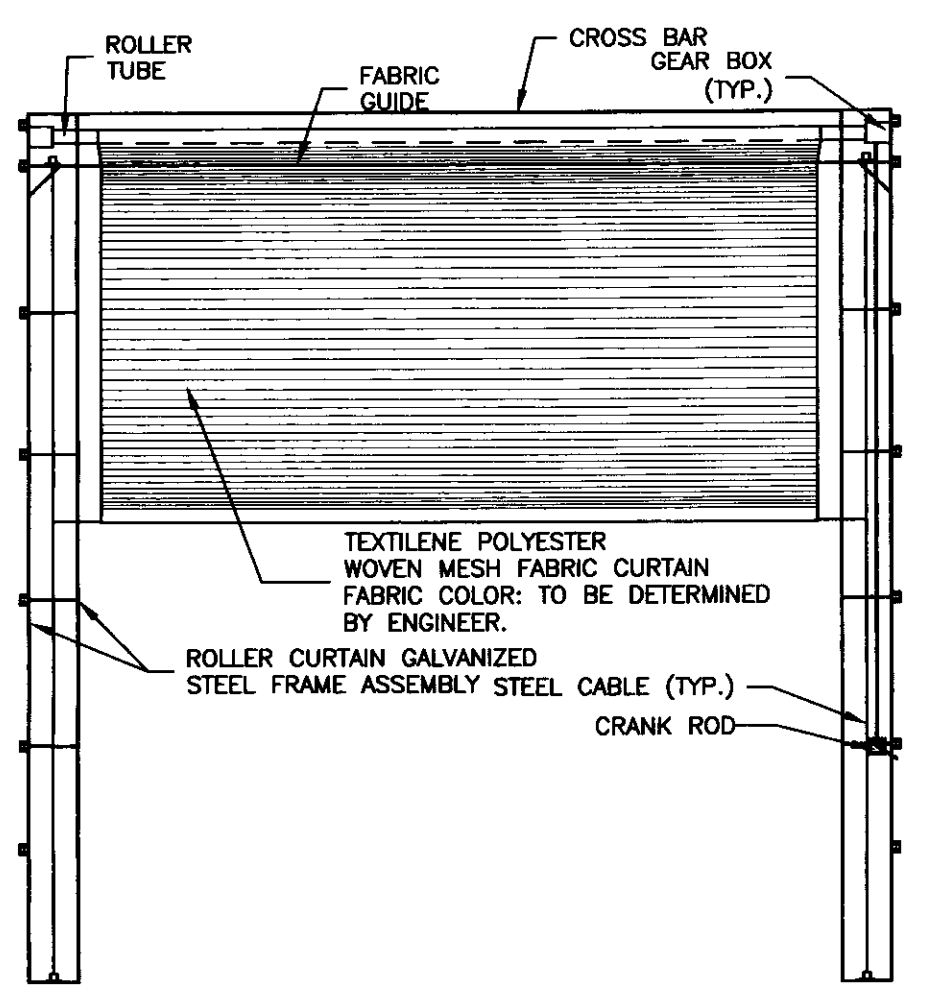


FRONT ELEVATION  
 SCALE: 1/8" = 1'-0"

NOTE:  
 ALL ELECTRICAL CONDUIT BELOW GRADE AND ON THE EXTERIOR OF THE BUILDING SHALL BE 1" RIGID CONDUIT. CONDUIT INSIDE THE BUILDING SHALL BE 3/4" SCH. 80 PVC.



BACK ELEVATION  
 SCALE: 1/8" = 1'-0"



TRACK ASSEMBLY AND CURTAIN FABRIC WILL BE SUPPLIED BY: (OTTER CREEK AWNINGS; 19 ECHO PLACE, WILLISTON, VT. 05495 (802) 864-3009.)

NEW ROLLER CURTAIN  
 SCALE: N.T.S.

GENERAL NOTES

ALL BUILDINGS RELATED EXCAVATION, FILL, BACKFILL, COMPACTION WILL BE PERFORMED BY VTRANS AND COORDINATED WITH GENERAL CONTRACTOR.

ALL SUB BASE OF GRAVEL, COMPACTION, FINAL GRADING AND PAVING OF DRIVES AND PARKING AREAS WILL BE PERFORMED BY VTRANS AND COORDINATED WITH GENERAL CONTRACTOR.

TRUSS NOTES:

TRUSS MANUFACTURER TO PROVIDE DEPT. OF STATE BUILDINGS ENGINEER A SET OF ENGINEERED & STAMPED DRAWINGS FOR APPROVAL PRIOR TO TRUSS MANUFACTURE (ENGINEER MUST BE LICENSED IN VERMONT).

TRUSS MANUFACTURER TO PROVIDE THE CONTRACTOR WITH ALL NECESSARY INSTRUCTIONS FOR PROPER TRUSS INSTALLATION, ANCHORAGE, BRACING, TRUSS DESIGN LOADS IN ACCORDANCE WITH THE 1987 B.O.C.A. FOR VERMONT.

MINIMUM LOADS:

LIVE - PER 1987 B.O.C.A. FOR VERMONT (40 PSF MIN.)  
 DEAD - AS CALCULATED FROM TRUSSES & ROOF MATERIAL 5 PSF ON BOTTOM CORD  
 WIND - 25 PSF  
 DIAGONAL WIND BRACING PER TRUSS MANUFACTURER.

LUMBER NOTES:

FRAMING MEMBERS TO BE KILN DRIED CONSTRUCTION GRADE SPRUCE S4S 19% MOISTURE CONTENT.

PLATES & NAILERS IN CONTACT WITH CONCRETE TO BE CCA 0.40 TREATED ALL FASTENERS TO BE GALVANIZED AND SHALL BE APPROPRIATELY SIZED.

TRIM AND SOFFIT MATERIAL TO BE NATIVE ROUGH SAWN WHITE PINE, SPRUCE, EASTERN FIR OR RED PINE.

SMARTSIDE PANEL NOTES:

8d GALVANIZED NAILS FOR 19/32" PANELS PENETRATING STUDS 1 1/2" NAIL SPACING: 6" MAX. PERIMETER, 12" MAX FIELD, 3/8" MIN. FROM EDGES. NAILS TO BE SET FLUSH. DO NOT COUNTERSINK NAILS INTO PANEL. MINIMUM 3/8" GAP REQUIRED AT HORIZONTAL JOINTS OF PANEL SIDING. SMARTSIDE PANEL SIDING MUST NOT CONTACT CONCRETE. 1/2" CLEARANCE MIN. SMARTSIDE PANEL SIDING MUST NOT CONTACT GROUND. 6" CLEARANCE MIN. PAINT ALL PANEL SURFACES INCLUDING BOTTOM EDGES

ADDITIONAL SMARTSIDE PANEL INSTALLATION INFO CAN BE FOUND AT WWW.SMARTSIDEONLINE.COM OR CALL 800-648-6893

FINISH NOTES:

ROOFING COLOR: IVY GREEN (BY AMERI-DRAIN) OR AS DIRECTED BY ENGINEER PAINT TO BE OLYMPIC ACRYLIC LATEX SATIN FINISH. COLOR TO BE DETERMINED BY ENGINEER.

APPLY PAINT AS SOON AS POSSIBLE AFTER SIDING IS INSTALLED.

PRE-PRIME ALL ROUGH SAWN FINISH MATERIAL PRIOR TO INSTALLATION. APPLY TWO COATS OF FINISH.

CONCRETE NOTES:

PER A.O.T. STANDARD.

CONCRETE STRENGTH TO BE 3500 PSI  
 CONCRETE FINISH TO BE FLOATED.

CONCRETE TO BE CLASS "B" PER AOT STANDARD SPECIFICATIONS TABLE 501.03A WITH 5% ± 1% AIR ENTRAINMENT, AND 2"-4" 5LUMP.

RE-BAR TO BE CONTINUOUS THROUGH CONSTRUCTION JOINTS.

CONTRACTOR TO LEAVE NO METAL WITHIN 1" OF SURFACE. USE 1" DEEP PLASTIC CONES AT ALL TIES AND PLUG ALL TIE HOLES WITH AN APPROVED NON-SHRINK GROUT.

ALL RE-BAR TO BE GRADE 60 WITH 3" CLEARANCE ON ALL SIDES UNLESS NOTED OTHERWISE.

RE-BAR TO BE STORED ON BLOCKING 4" MINIMUM ABOVE GROUND.

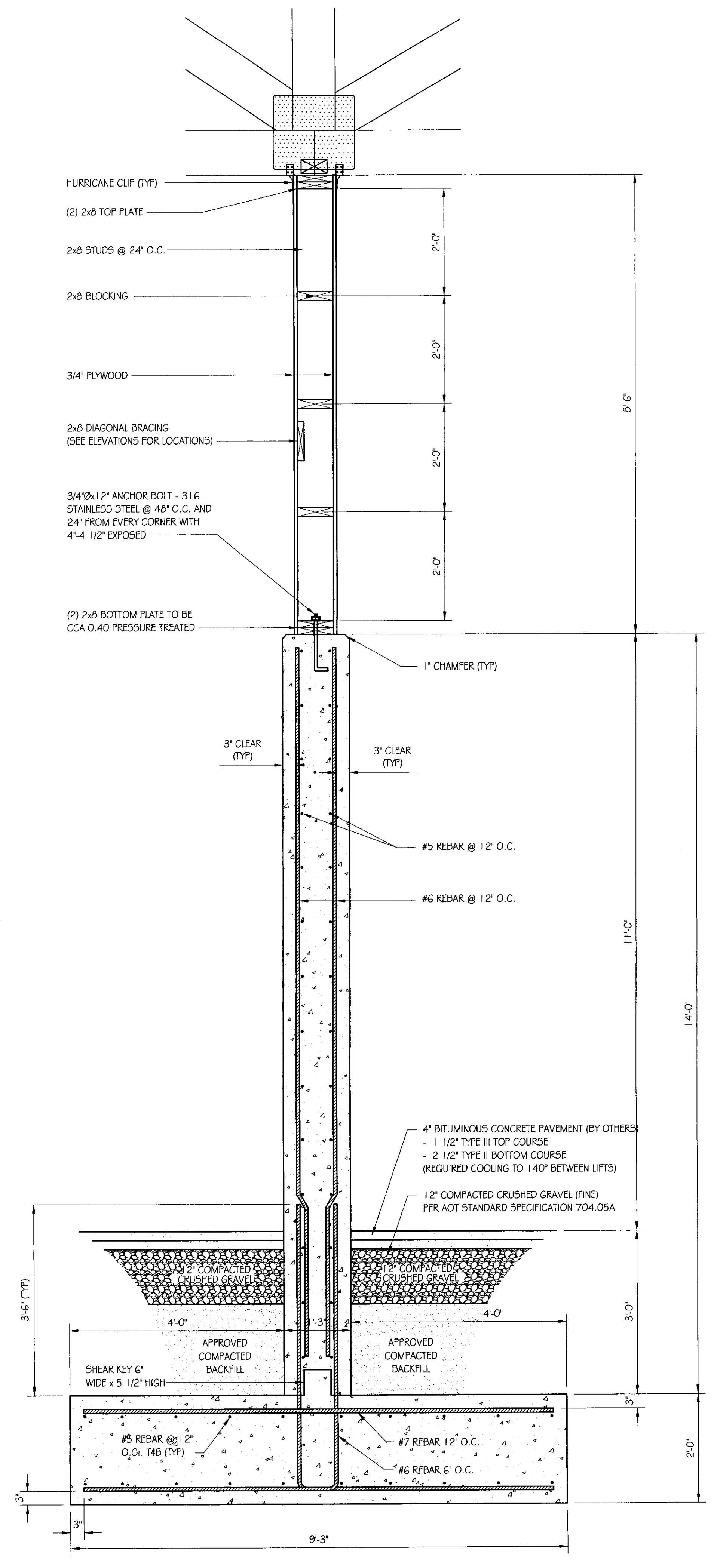
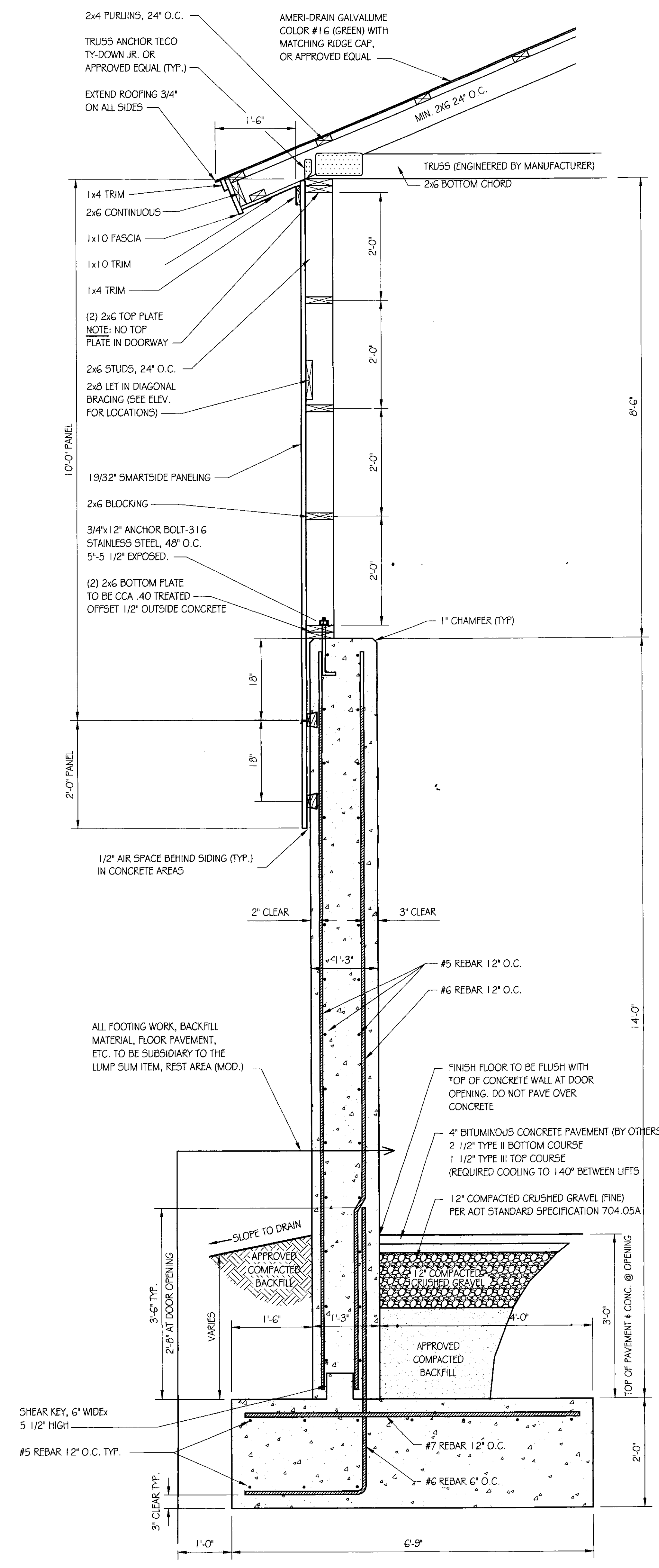
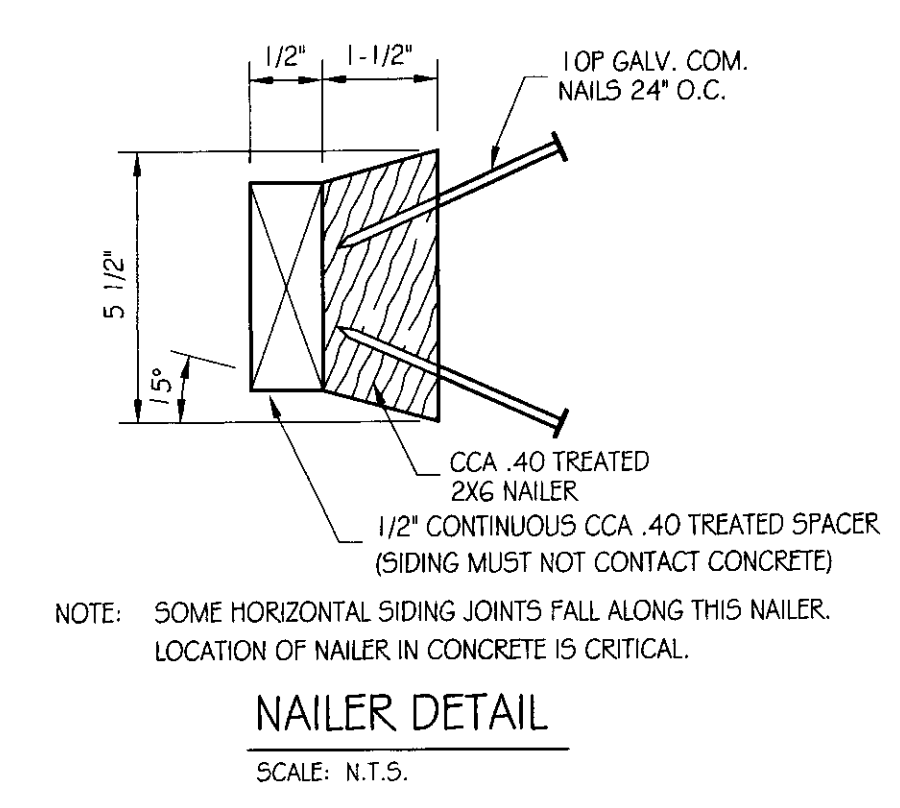
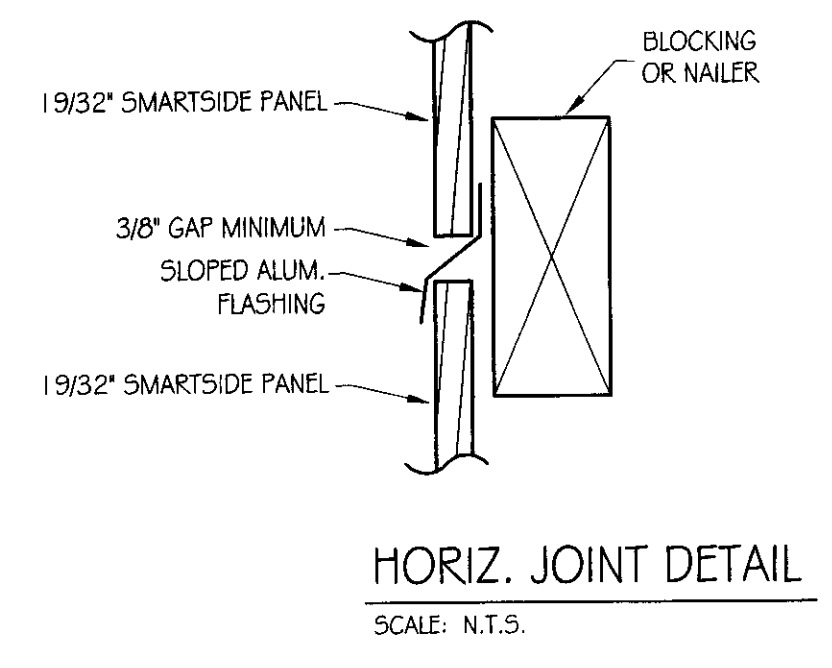
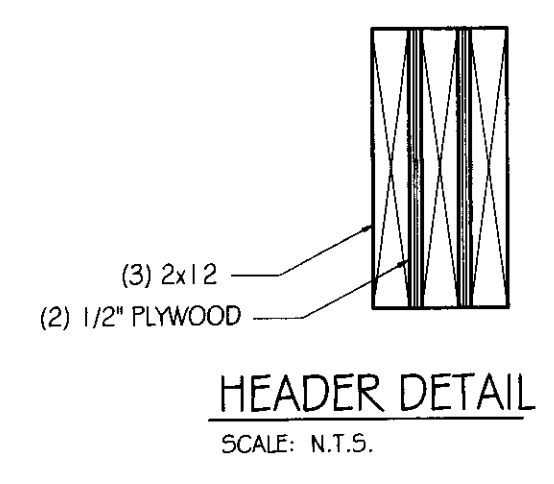
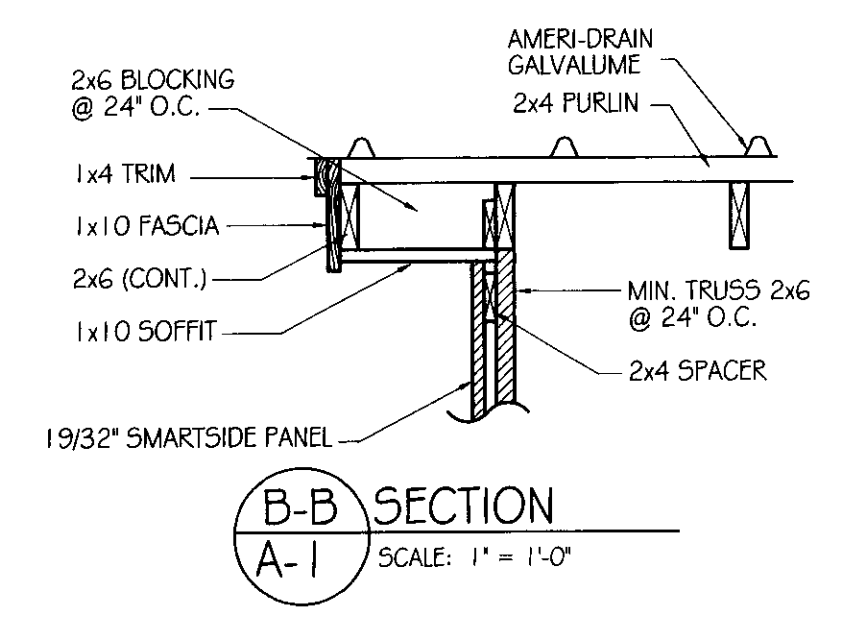
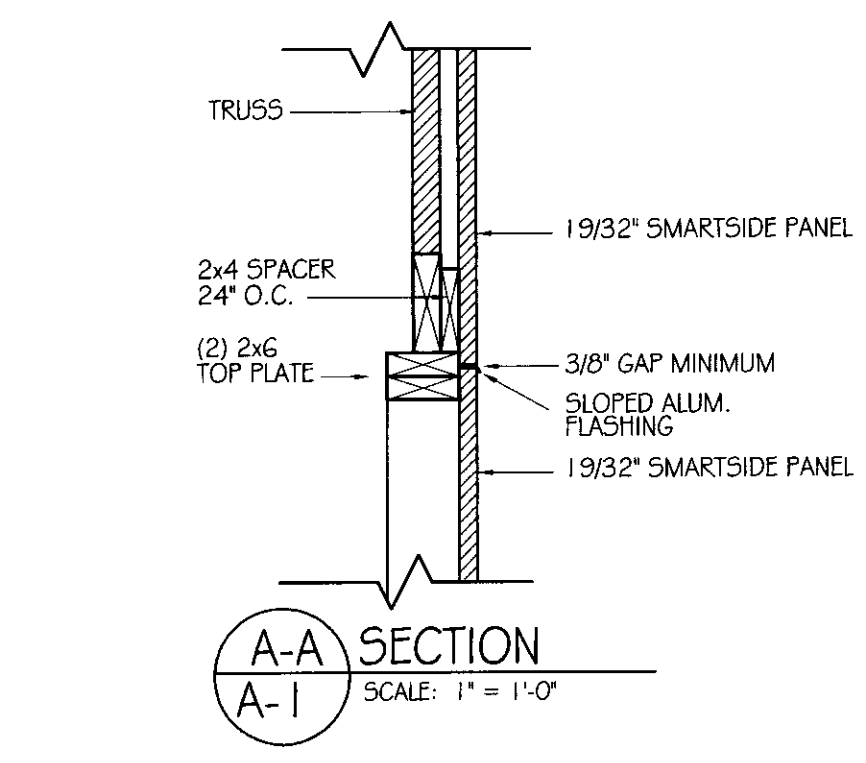
CONCRETE SUPPLIER TO PROVIDE TEST CYLINDERS FOR CONCRETE TESTING.

ALL CONCRETE TESTING TO BE DONE BY OWNER. CONTRACTOR IS RESPONSIBLE FOR SCHEDULING.

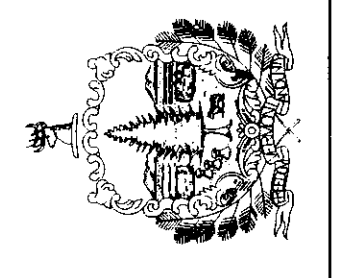
CONCRETE CURING SHALL FOLLOW IMMEDIATELY AFTER FORM REMOVAL PER A.O.T. STANDARD 501.17A. WATER CURING WILL BE REQUIRED, UNLESS ALTERNATE MEANS OF CURING IS APPROVED, IN WRITING, BY THE PROJECT ENGINEER.

ELECTRICAL NOTES:

SEE DRAWING E-3 FOR ELECTRICAL DETAILS & SPECIFICATIONS.



STATE OF VERMONT  
 Department of Buildings  
 and General Services  
 Agency of Administration  
 Montpelier, Vermont



VERMONT

AGENCY OF TRANSPORTATION  
 NEW 44' x 64' SALT / SAND SHED  
 SECTIONS

BLOOMFIELD

REVISIONS

SCALE: AS NOTED	DATE: JULY 2006	DRAWN BY: S.K. Jaramwicz	APPR. BY: R. BARRY
-----------------	-----------------	--------------------------	--------------------

AGENCY OF TRANSPORTATION  
 NEW 44' x 64'  
 SALT / SAND SHED  
 SECTIONS

A-2

2 OF 2