



STATE OF VERMONT  
 Department of Buildings  
 and General Services  
 Agency of Administration  
 Montpelier, Vermont



VERMONT

AGENCY OF TRANSPORTATION  
 NEW 44' x 64' SALT / SAND SHED  
 PLAN, DETAILS & ELEVATIONS

BLOOMFIELD

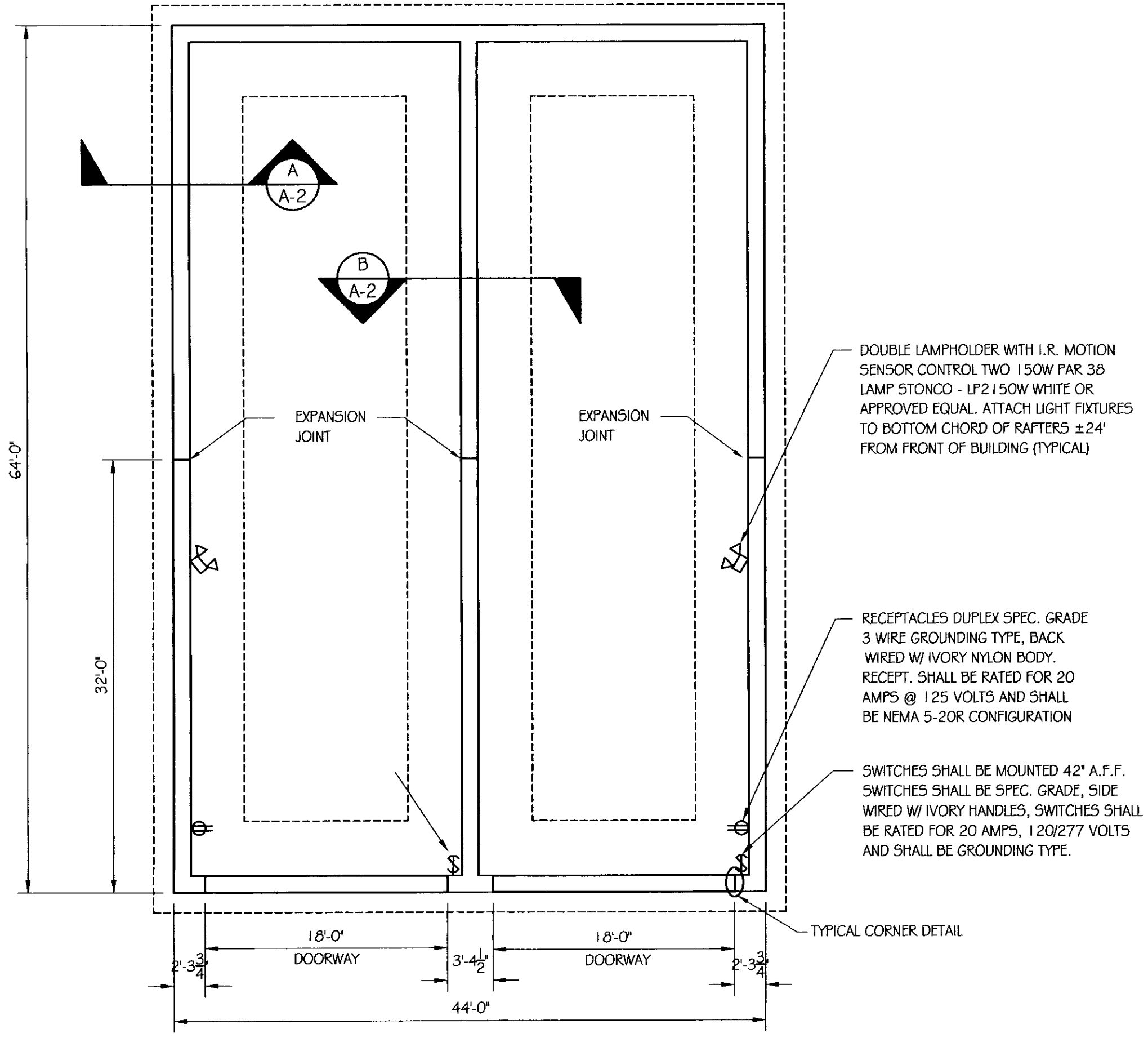
REVISIONS

SCALE:	AS NOTED
DATE:	JULY 2006
DRAWN BY:	S.K. Janawicz
APPR. BY:	R. BARRY

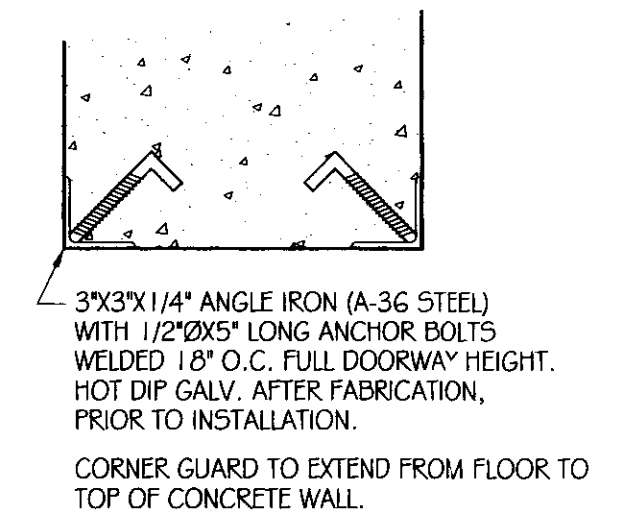
AGENCY OF TRANSPORTATION  
 NEW 44' x 64' SALT / SAND SHED  
 PLAN, DETAILS & ELEVATIONS

A-1

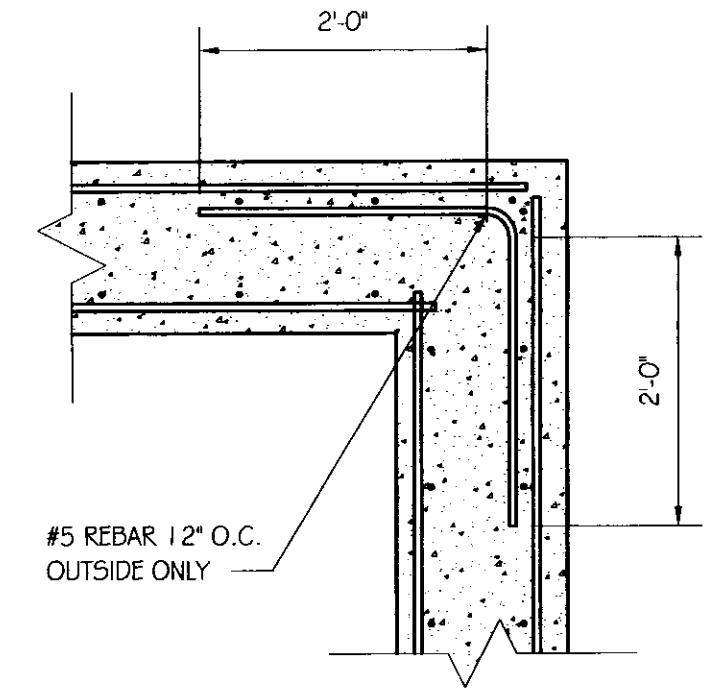
1 OF 2



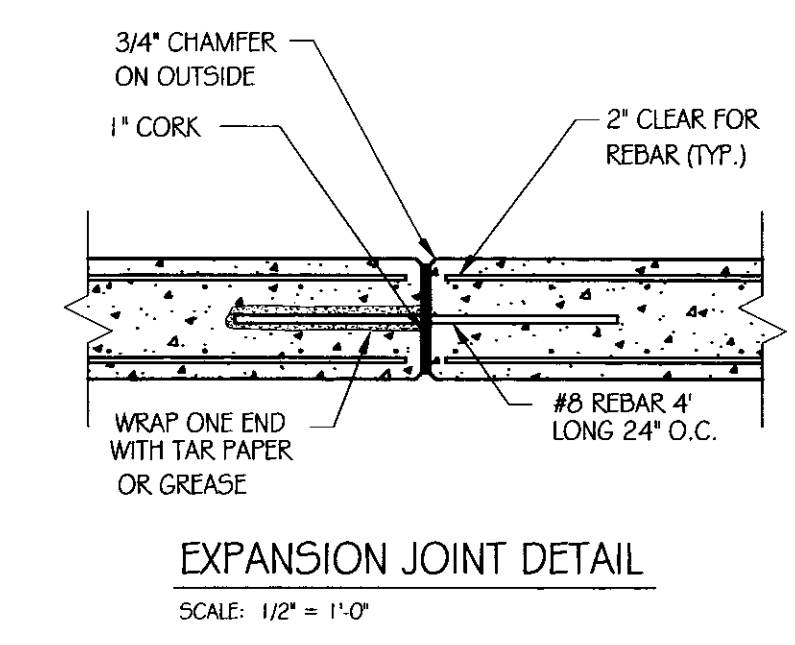
FOUNDATION PLAN  
 SCALE: 1/8" = 1'-0"



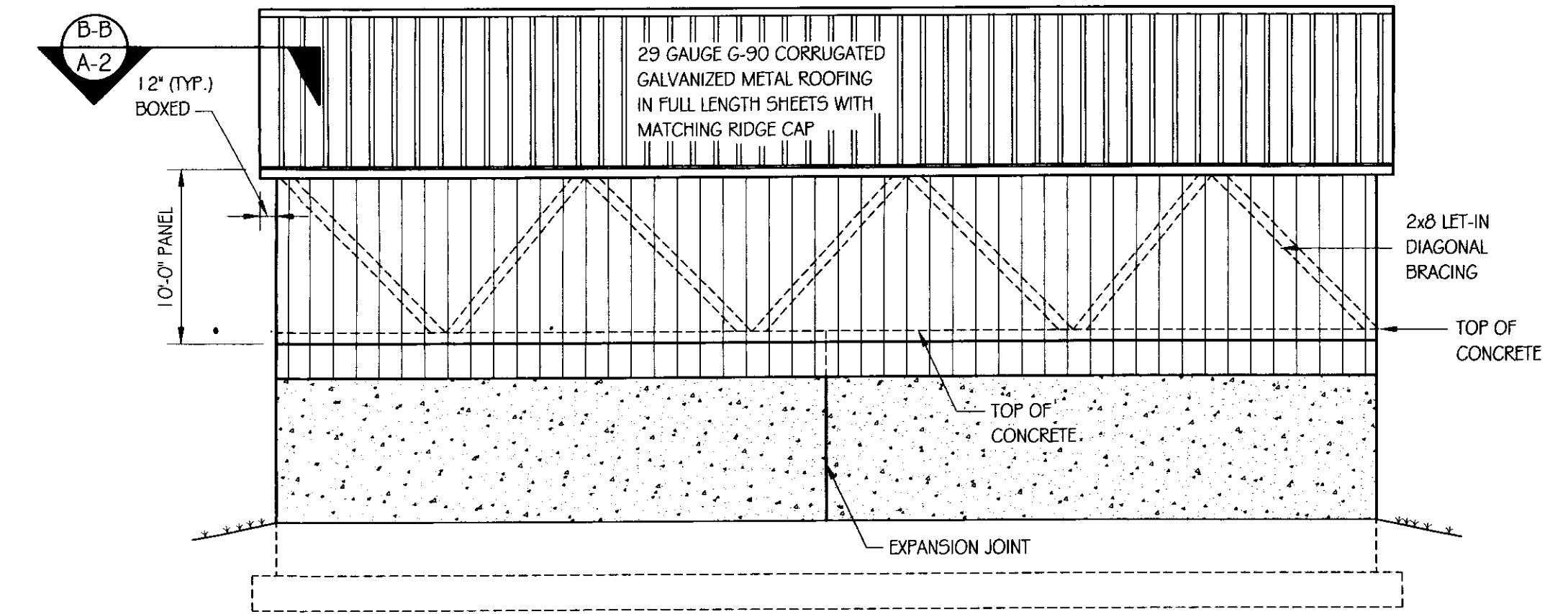
CORNER DETAIL AT OPENINGS  
 SCALE: 1 1/2" = 1'-0"



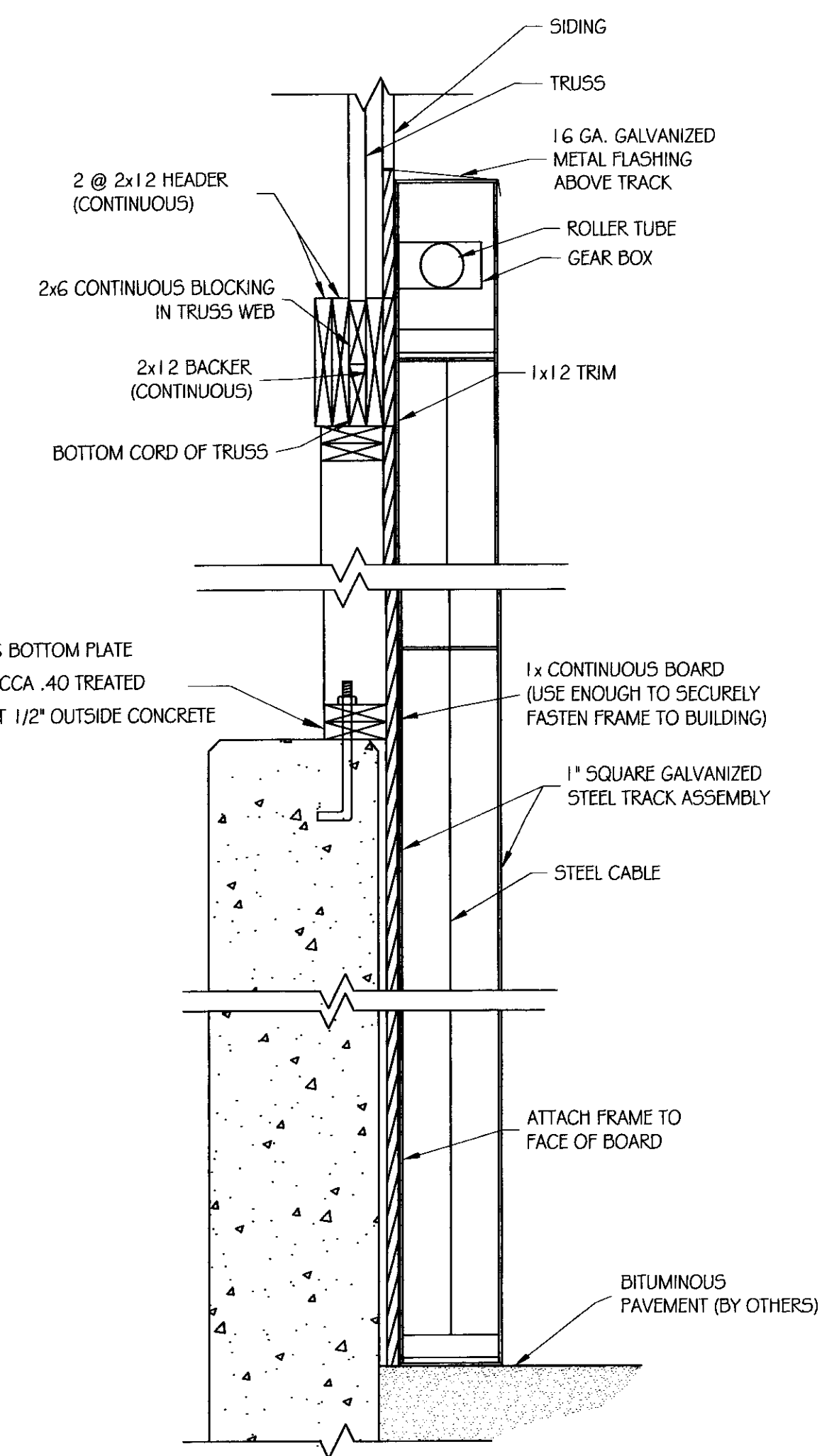
CORNER DETAIL  
 SCALE: 3/4" = 1'-0"



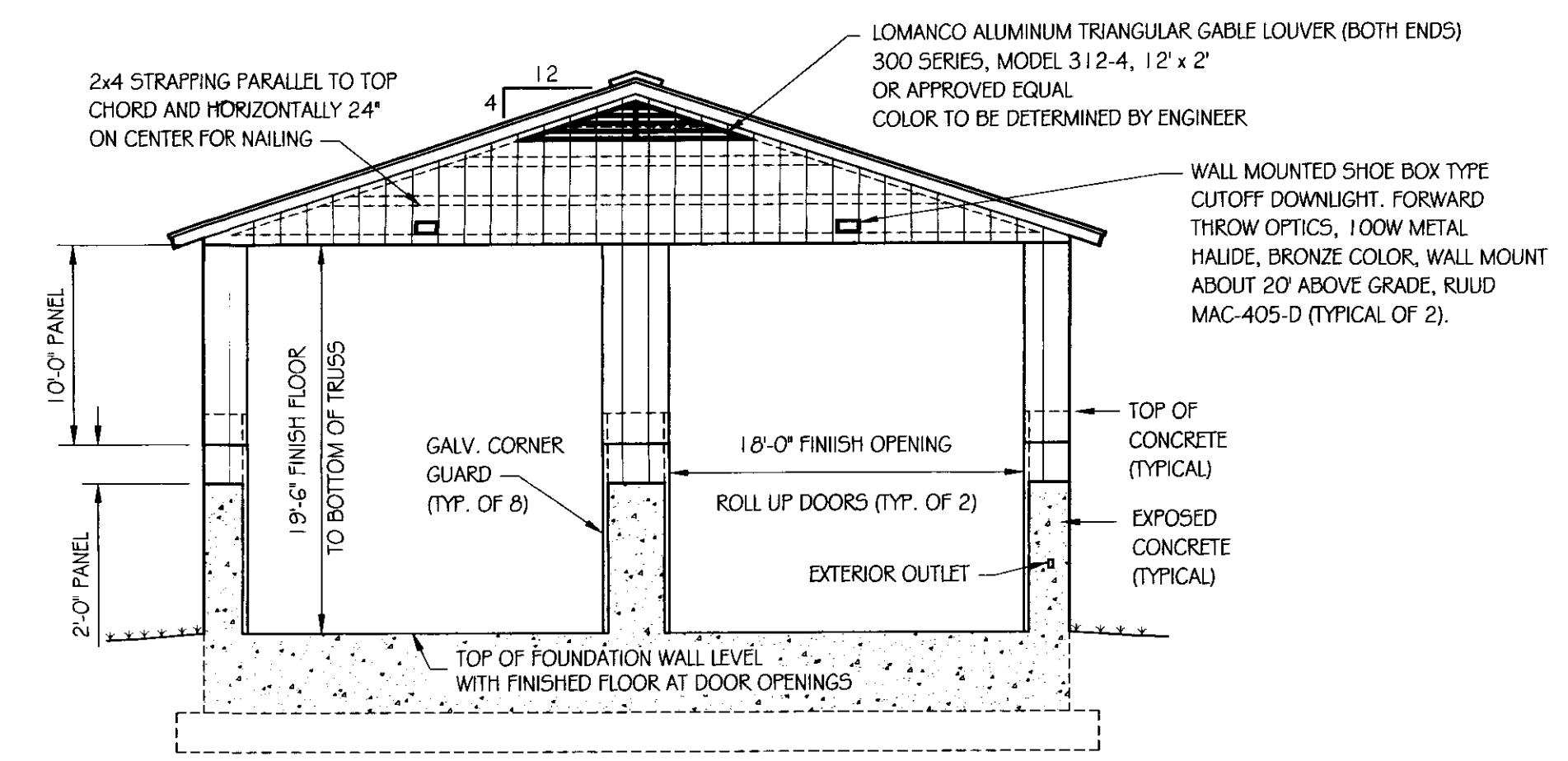
EXPANSION JOINT DETAIL  
 SCALE: 1/2" = 1'-0"



SIDE ELEVATION  
 SCALE: 1/8" = 1'-0"

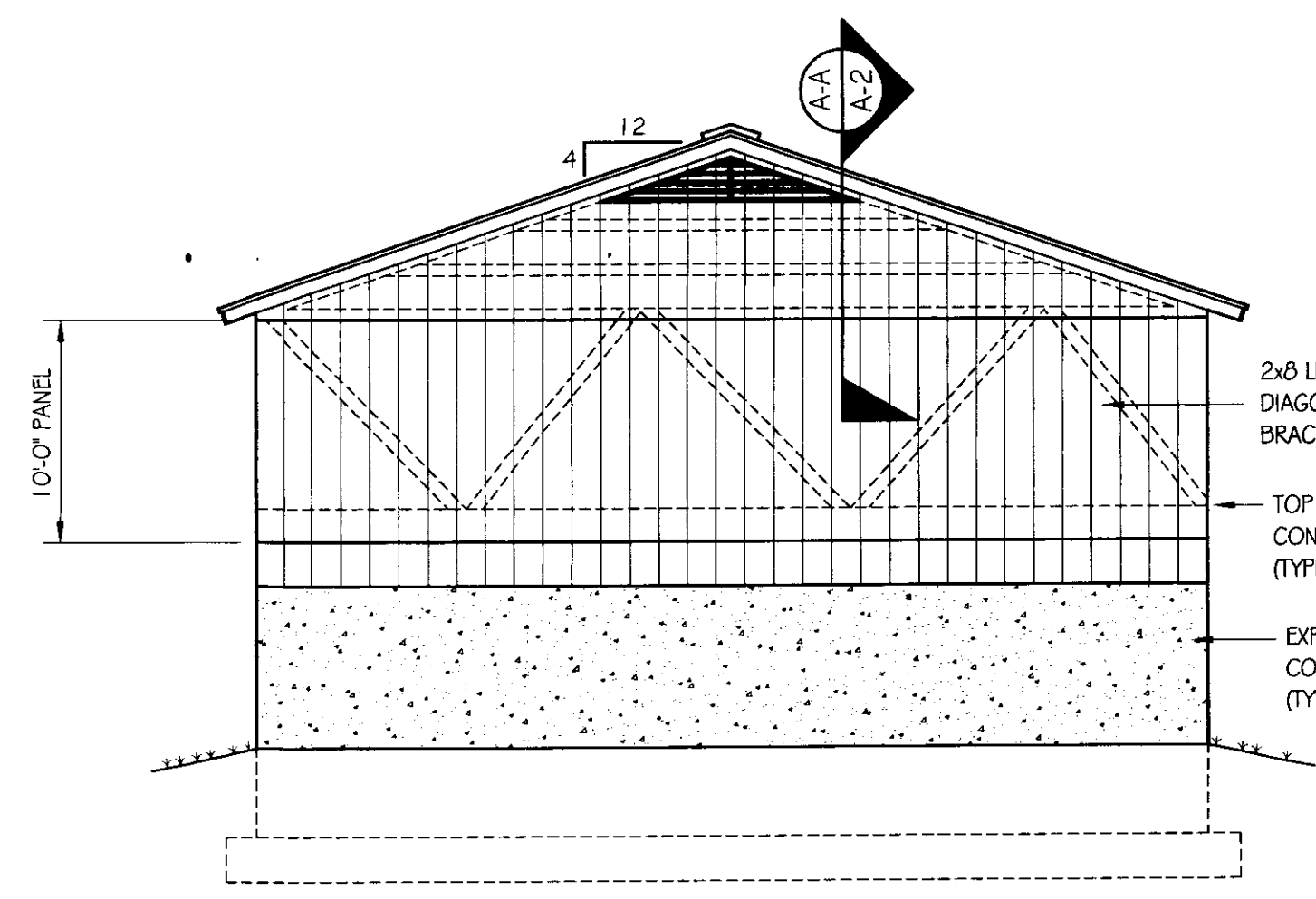


CURTAIN TRACK & GUIDE DETAIL  
 SCALE: 1" = 1'-0"

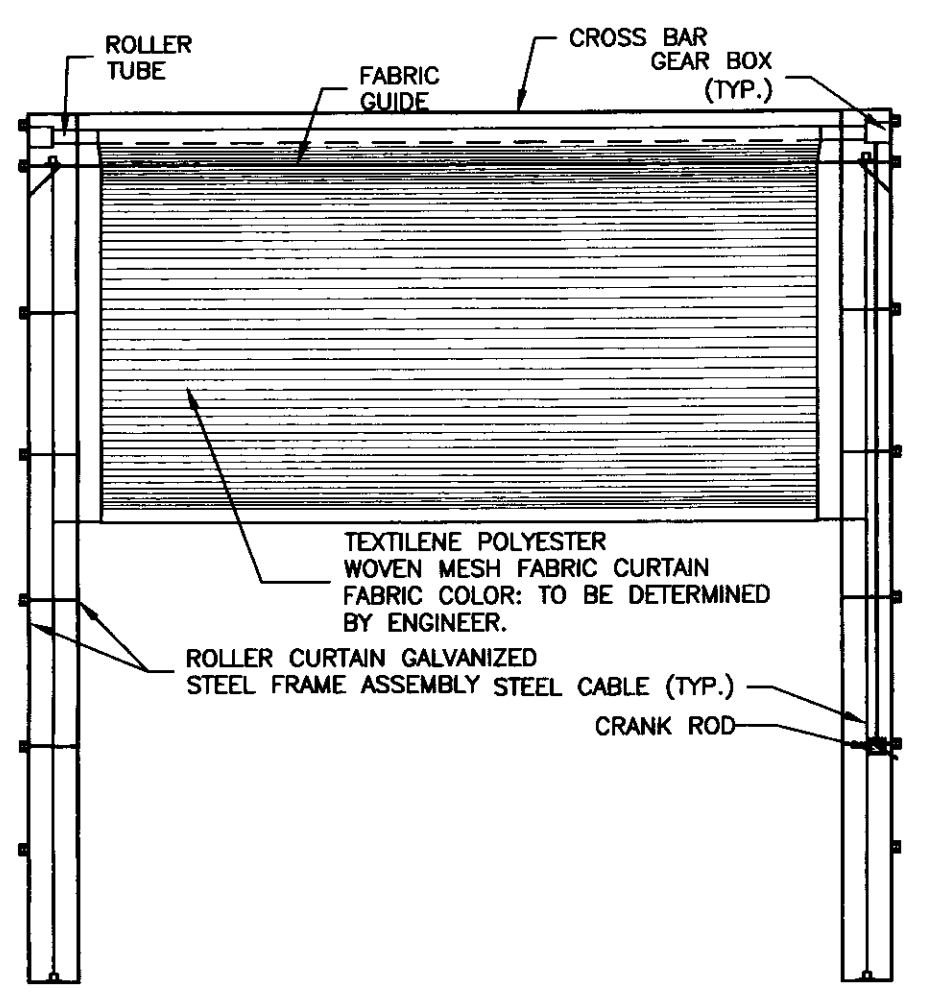


FRONT ELEVATION  
 SCALE: 1/8" = 1'-0"

NOTE:  
 ALL ELECTRICAL CONDUIT BELOW GRADE AND ON THE EXTERIOR OF THE BUILDING SHALL BE 1" RIGID CONDUIT. CONDUIT INSIDE THE BUILDING SHALL BE 3/4" SCH. 80 PVC.



BACK ELEVATION  
 SCALE: 1/8" = 1'-0"



TRACK ASSEMBLY AND CURTAIN FABRIC WILL BE SUPPLIED BY: (OTTER CREEK AWNINGS; 19 ECHO PLACE, WILLISTON, VT. 05495 (802) 864-3009.)

NEW ROLLER CURTAIN  
 SCALE: N.T.S.