

SECTION B - B
1/8" = 1'-0"

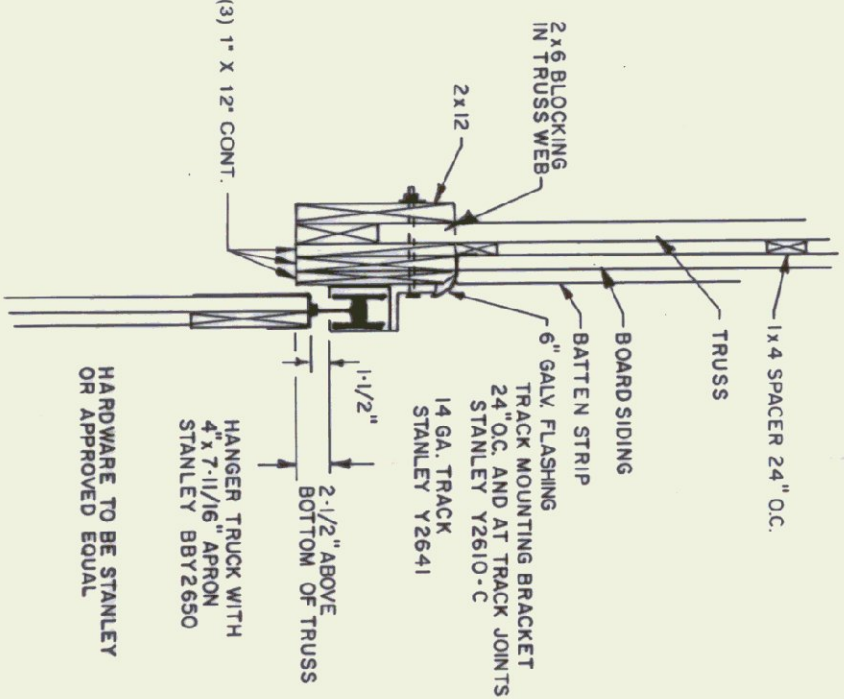
LUMBER NOTES

- ALL LUMBER NOT INDICATED AS SUPPLIED BY OWNER IS THE RESPONSIBILITY OF THE CONTRACTOR
- PLATE AND NAILS IN CONTACT WITH CONCRETE TO BE CCA 40 TREATED
- BOARD AND BATTEN SIDING TO BE NATIVE PUGH SAWN WHITE PINE. BOARDS TO BE RANDOM WIDTH 10'-12" BATTEN WIDTH 4"
- BOARD SIDING AND BATTEN STRIPS TO BE FULL LENGTH WITH NO HORIZONTAL JOINTS
- ALL NAILS TO BE GALVANIZED

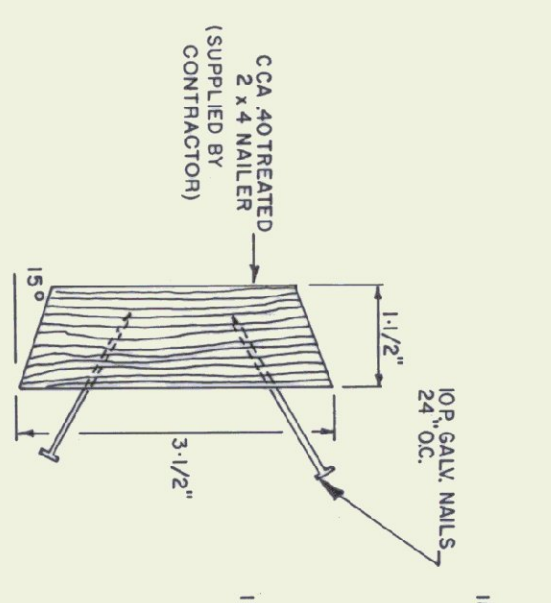
FINISH NOTES

- ALL ROOFING AND BATTENS TO BE STAINED WITH ONE COAT ON ALL SIDES FROM TRUSS TO RECEIVE ONE ADDITIONAL COAT OF STAIN
- STAIN TO BE OLIVE OIL GALE SEMI TRANSPARENT CROWN BROWN # 713

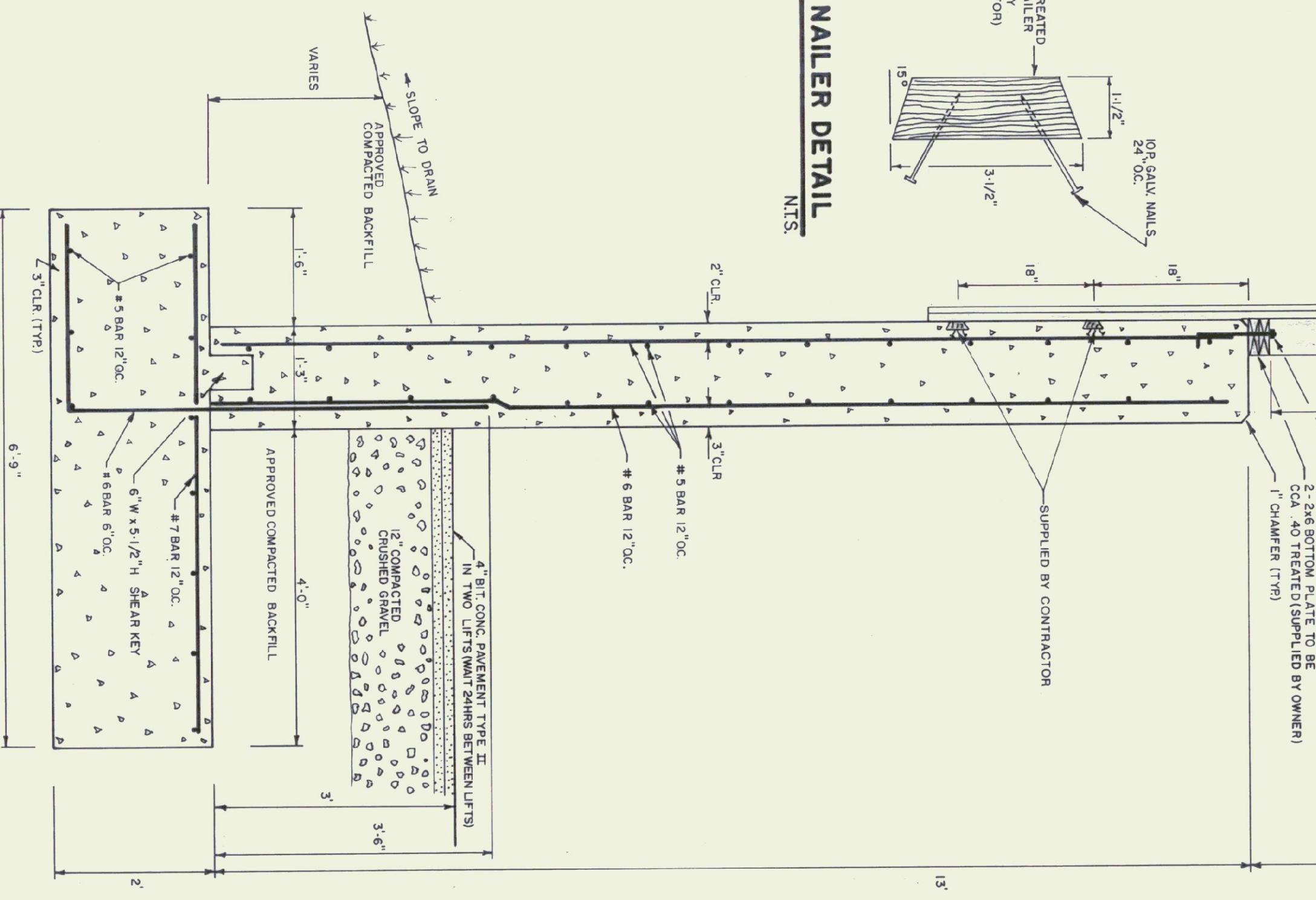
- TRUSS NOTES**
- TRUSS MANUFACTURER TO PROVIDE THE DEPT. OF STATE BUILDINGS ENGINEER A SET OF ENGINEERED & STAMPED DRAWINGS FOR APPROVAL PRIOR TO TRUSS MANUFACTURE
 - TRUSS MANUFACTURER TO PROVIDE THE CONTRACTOR WITH ALL NECESSARY INSTRUCTIONS FOR PROPER TRUSS INSTALLATION, ANCHORAGE, BRACING, LIFTING, ETC.
 - TRUSS DESIGN LOADS IN ACCORDANCE WITH THE 1987 BOCA, FOR VERMONT MINIMUM LOADS:
 - LIVE - PER 1987 B.O.C.A. FOR VT. (50 PSF MIN)
 - DEAD - AS CALCULATED FROM TRUSS & ROOF MATERIALS & IN ADDITION 5 PSF ON BOTTOM CHORD
 - WIND - 25 P.S.F.
 - DIAGONAL WIND BRACING PER TRUSS MANUFACTURER



TRACK MOUNT DETAIL
NTS.

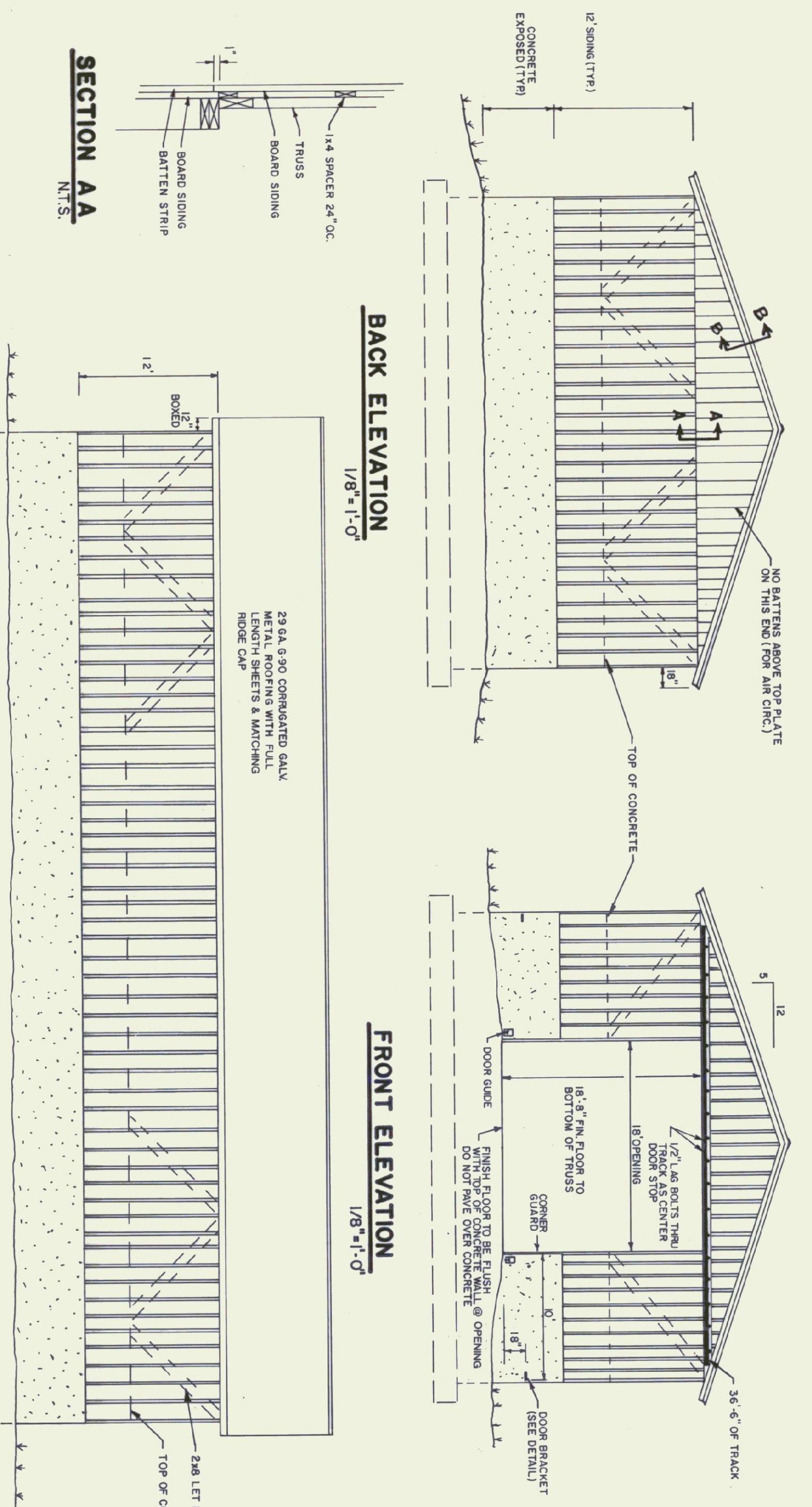


MAILER DETAIL
NTS.



TYPICAL WALL SECTION
3/4\"/>

NOTE: ALL 2X6 AND 2X8 FRAMING LUMBER AND BOARD AND BATTEN SIDING WILL BE ROUGH SAWN AND SUPPLIED BY OWNER. (STATE OF VERMONT) CONTRACTOR TO SUPPLY ALL OTHER MATERIAL INCLUDING BOARD AND BATTEN FOR DOORS



BACK ELEVATION
1/8\"/>

FRONT ELEVATION
1/8\"/>

SIDE ELEVATION
1/8\"/>

DOOR GUIDE DETAIL
NTS.

DOOR DETAIL
NTS.

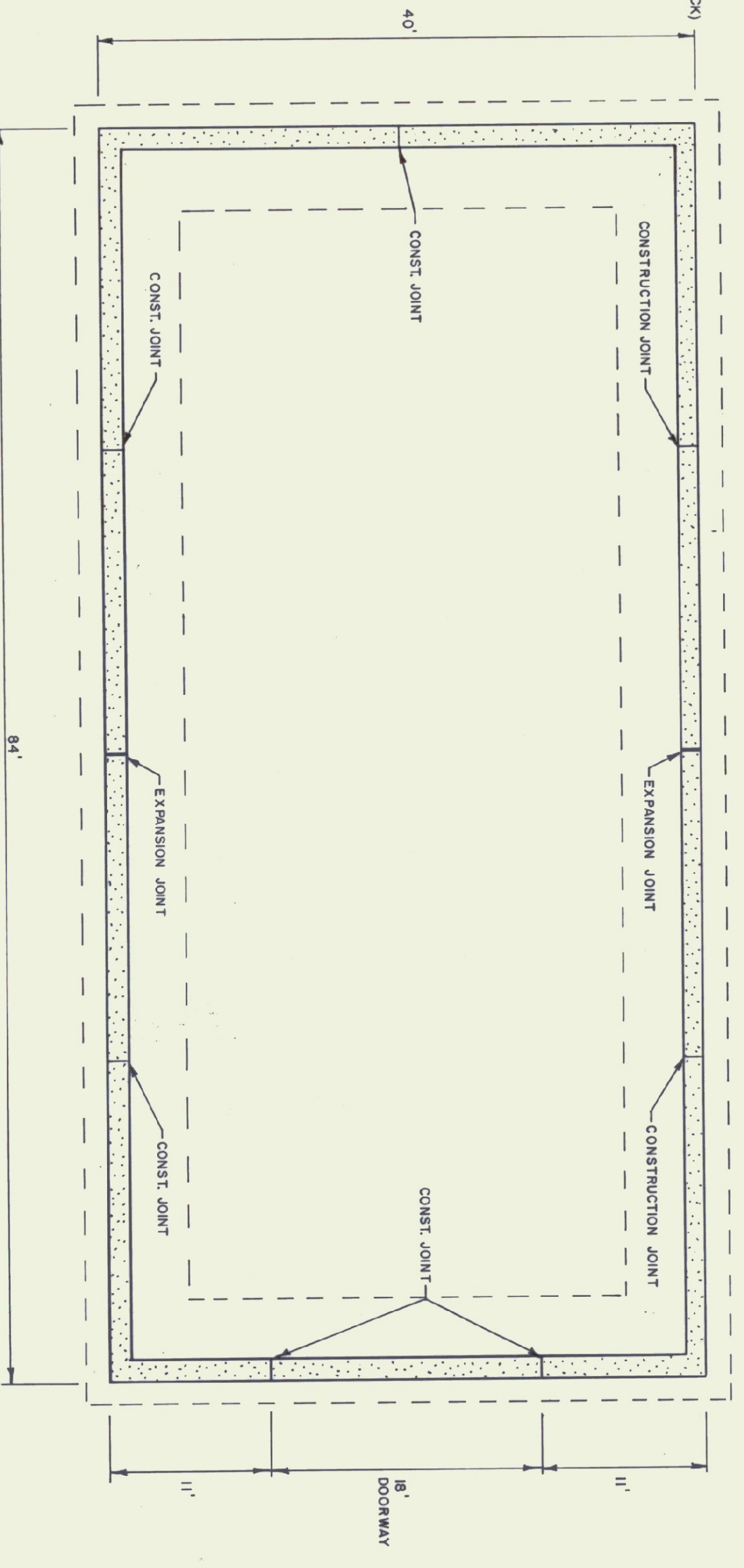
DOOR BRACKET LOCATIONS
NTS.

DOOR BRACKET DETAIL
NTS.

EXPANSION JOINT DETAIL
NTS.

CORNER GUARD
NTS.

FOUNDATION PLAN
1/8\"/>



STATE OF VERMONT
DEPARTMENT OF STATE BUILDINGS
AGENCY OF ADMINISTRATION
MONTPELIER, VERMONT

AGENCY OF TRANSPORTATION
40' X 84' SAND SHED
BRIGHTON MAINTENANCE FACILITY

BRIGHTON		VERMONT	
DATE: JUNE 1995	SCALE: AS NOTED	REVISIONS:	DWG. NO: A-1
DRAWN BY: B. MCAVITT	APPROVED BY: K. TREBAULT		3 OF 4