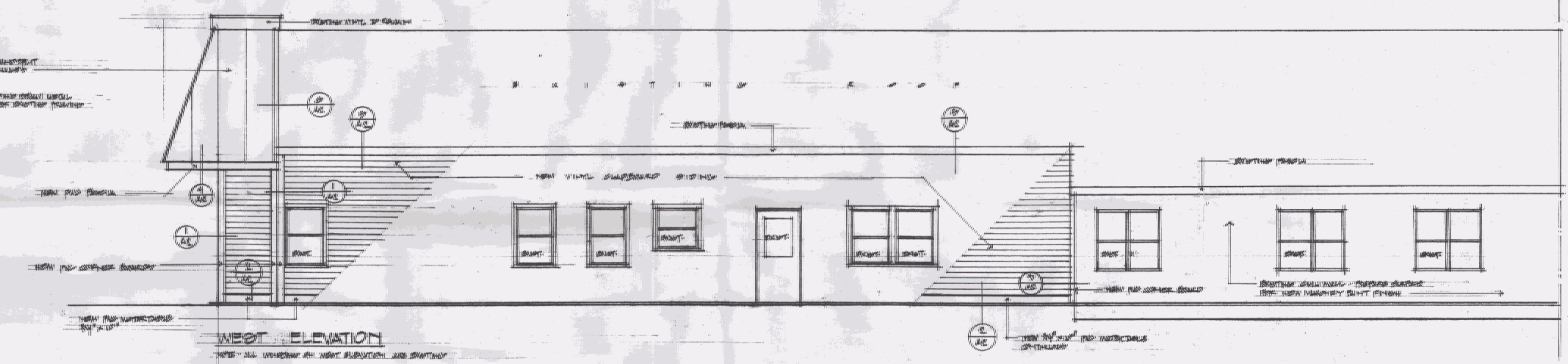
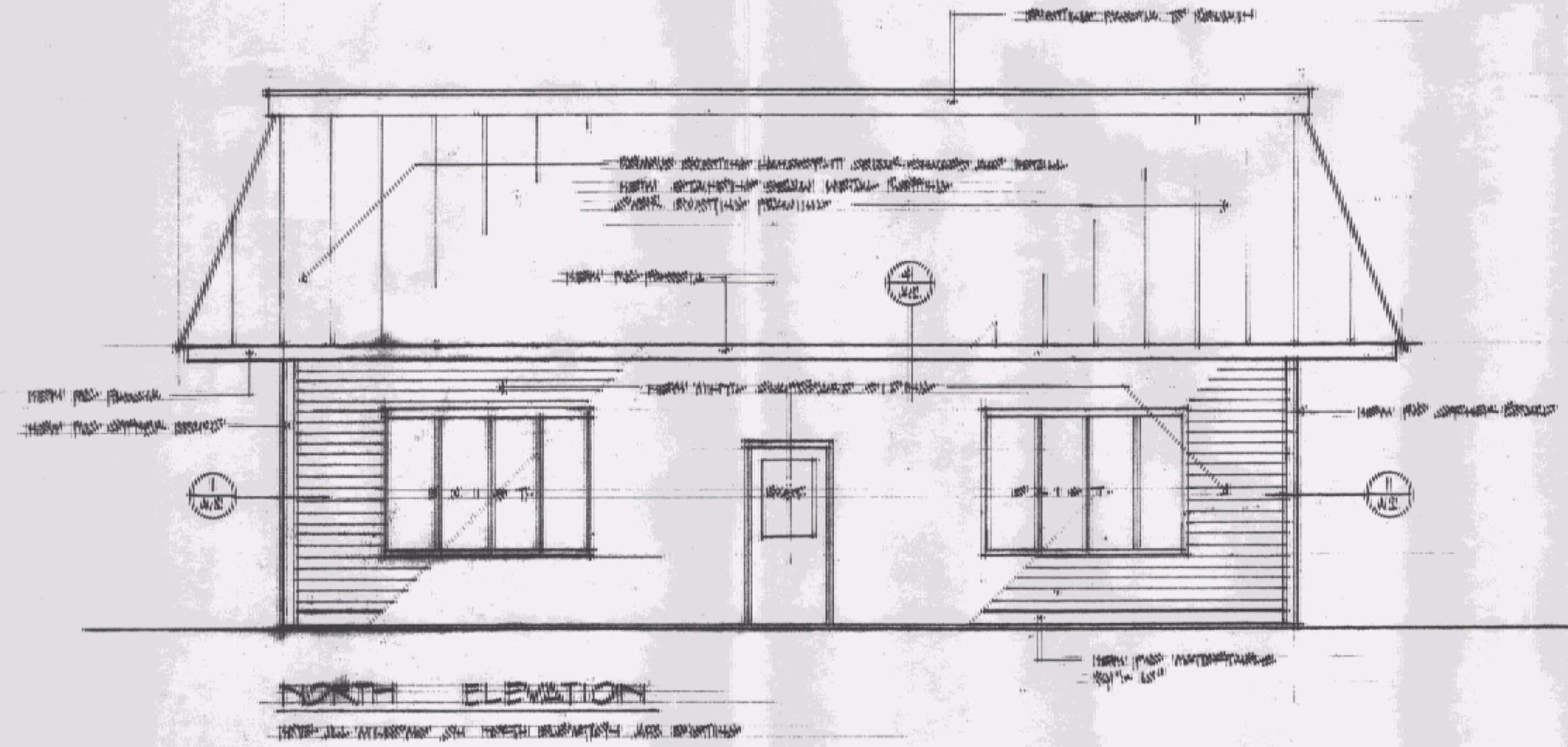


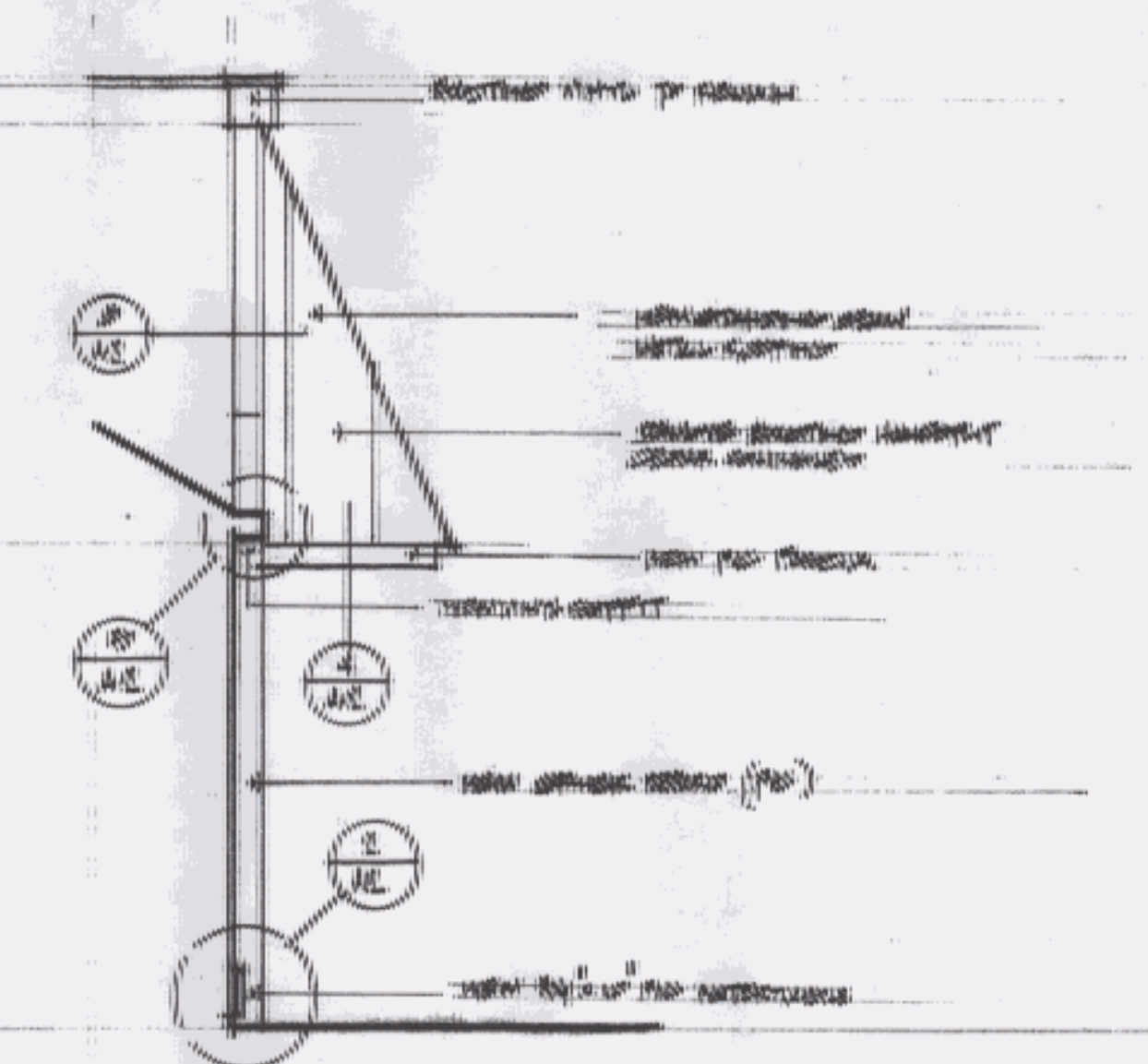
**EAST ELEVATION**



**WEST ELEVATION**



**NORTH ELEVATION**

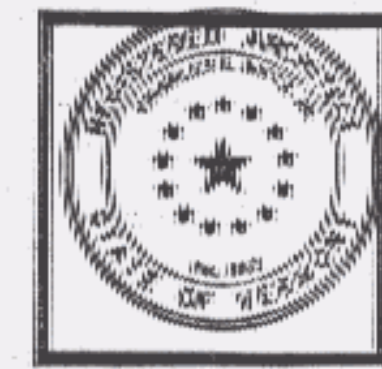


**SOUTH ELEVATION PARTIAL**

RECEIVED  
164 30 2011  
OPERATIONS DIVISION

DO NOT COPY

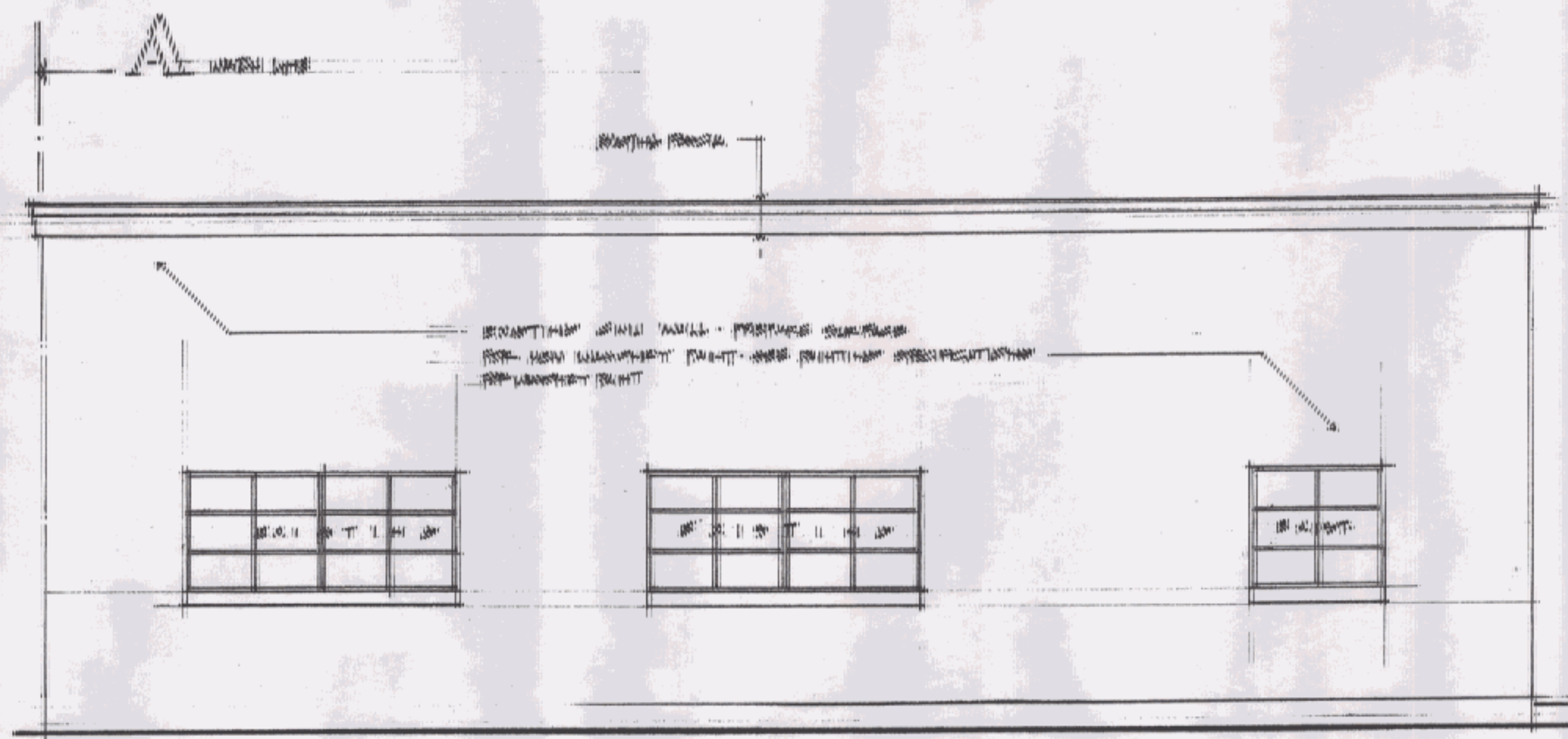
SET # 13



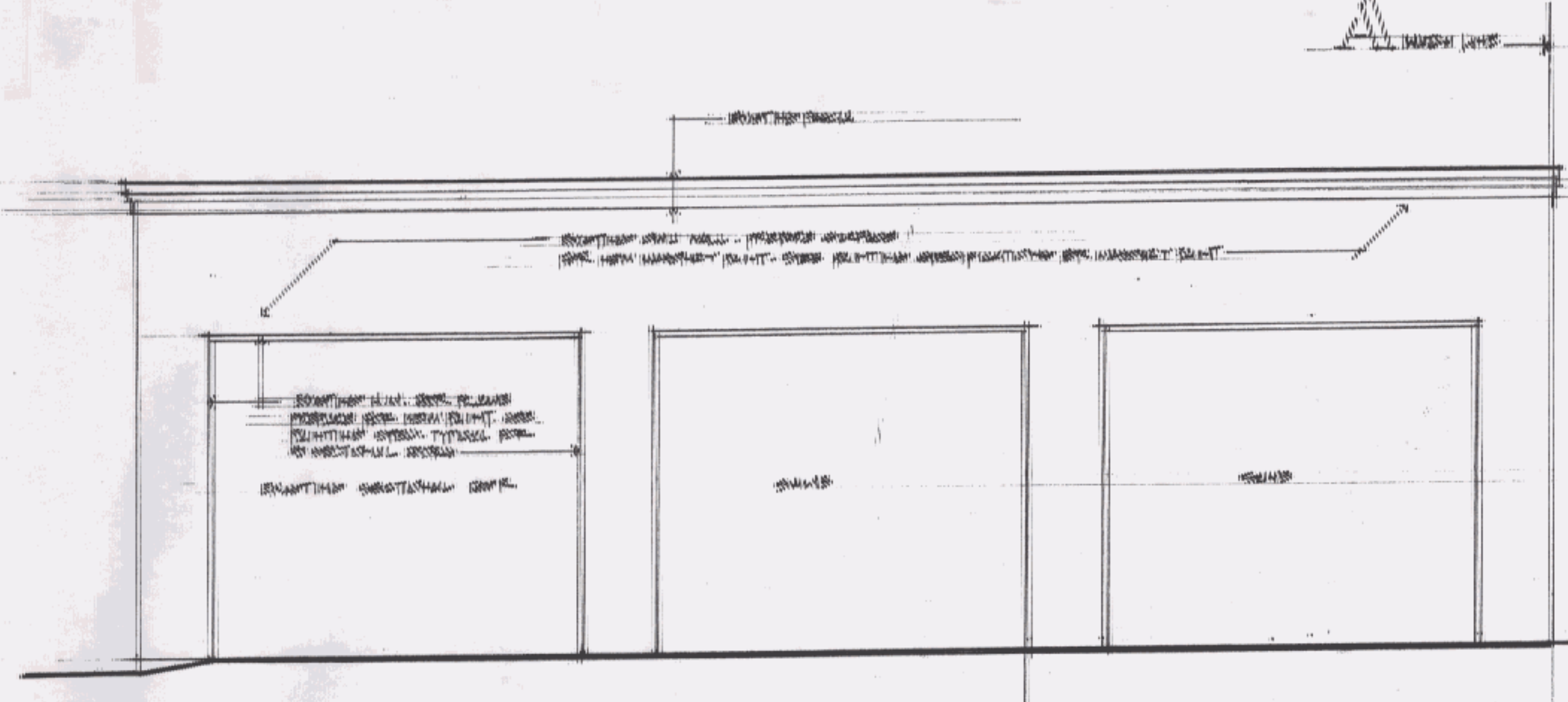
PROJECT:  
EXTERIOR RENOVATIONS  
EAST DISTRICT #1  
TITLE: EXTERIOR RENOVATIONS  
EXTERIOR ELEVATIONS  
SCALE 1/8" = 1'

CHARLES E. METZ  
ARCHITECT  
THE GRIST MILL  
BRADFORD VT 05033

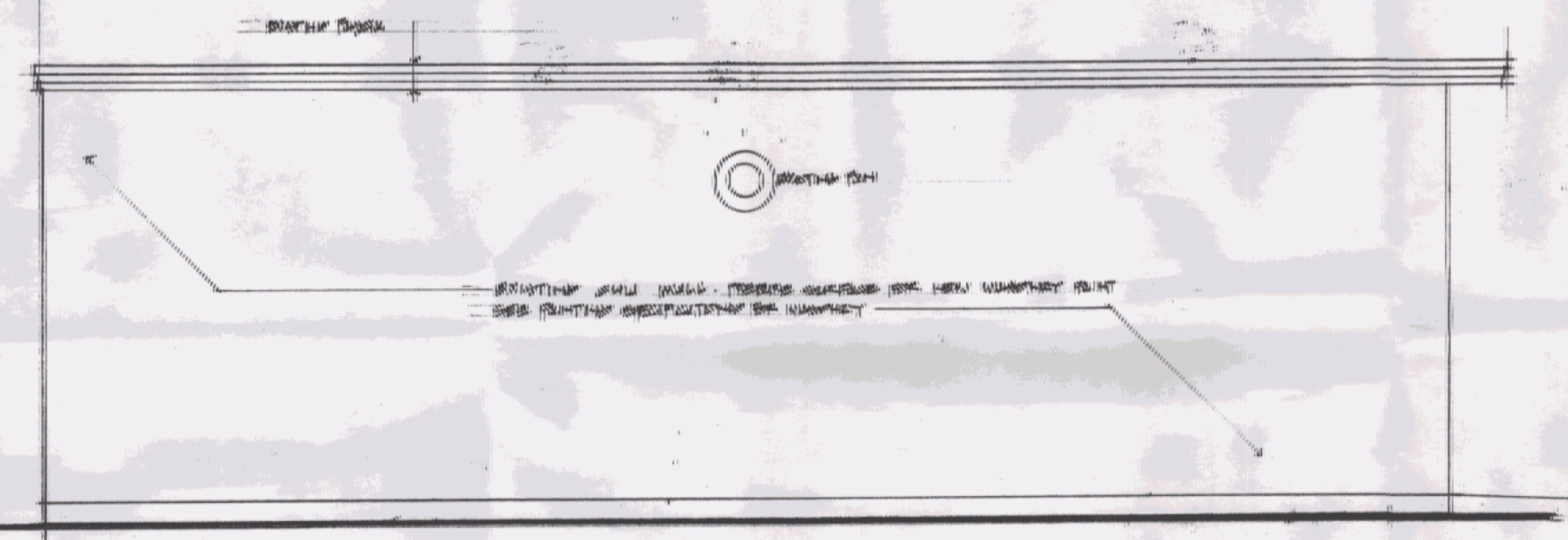




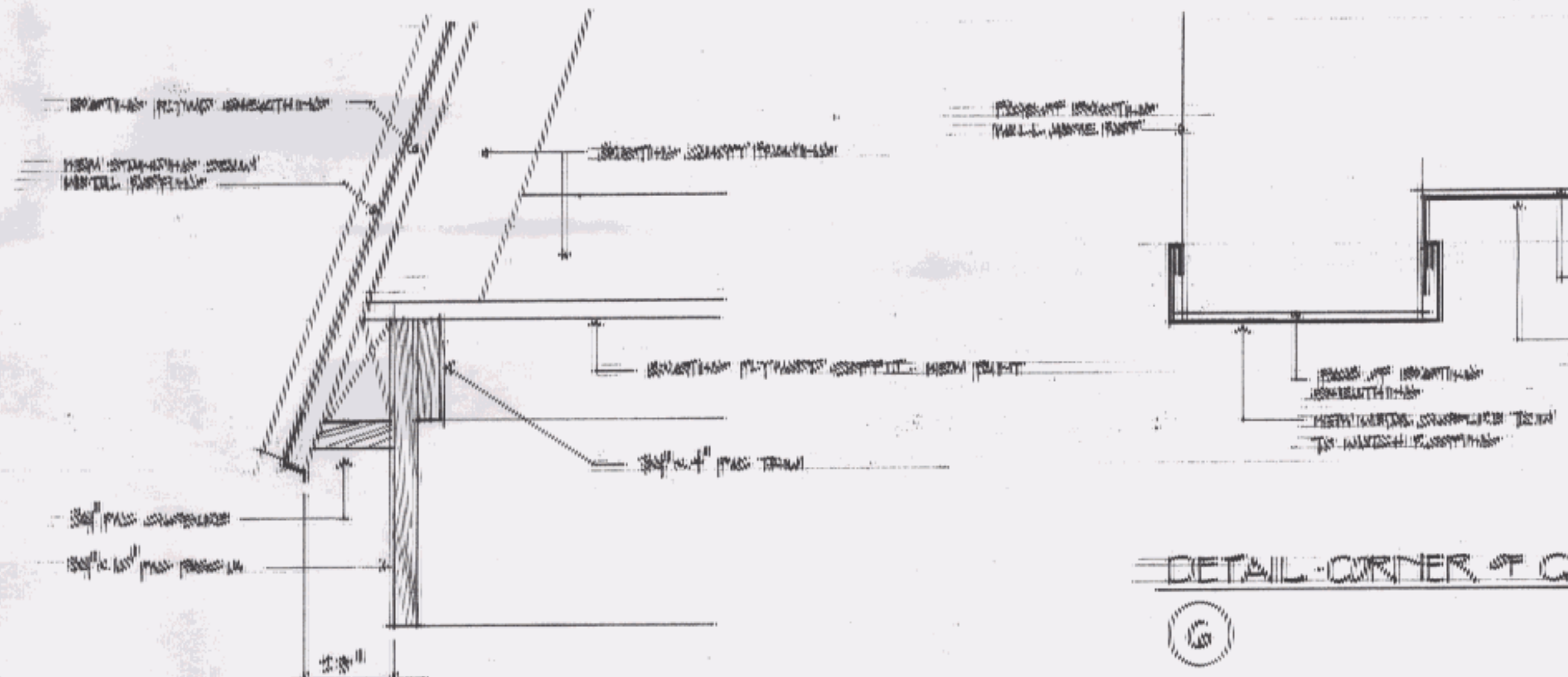
WEST ELEVATION - SURFACE ONLY



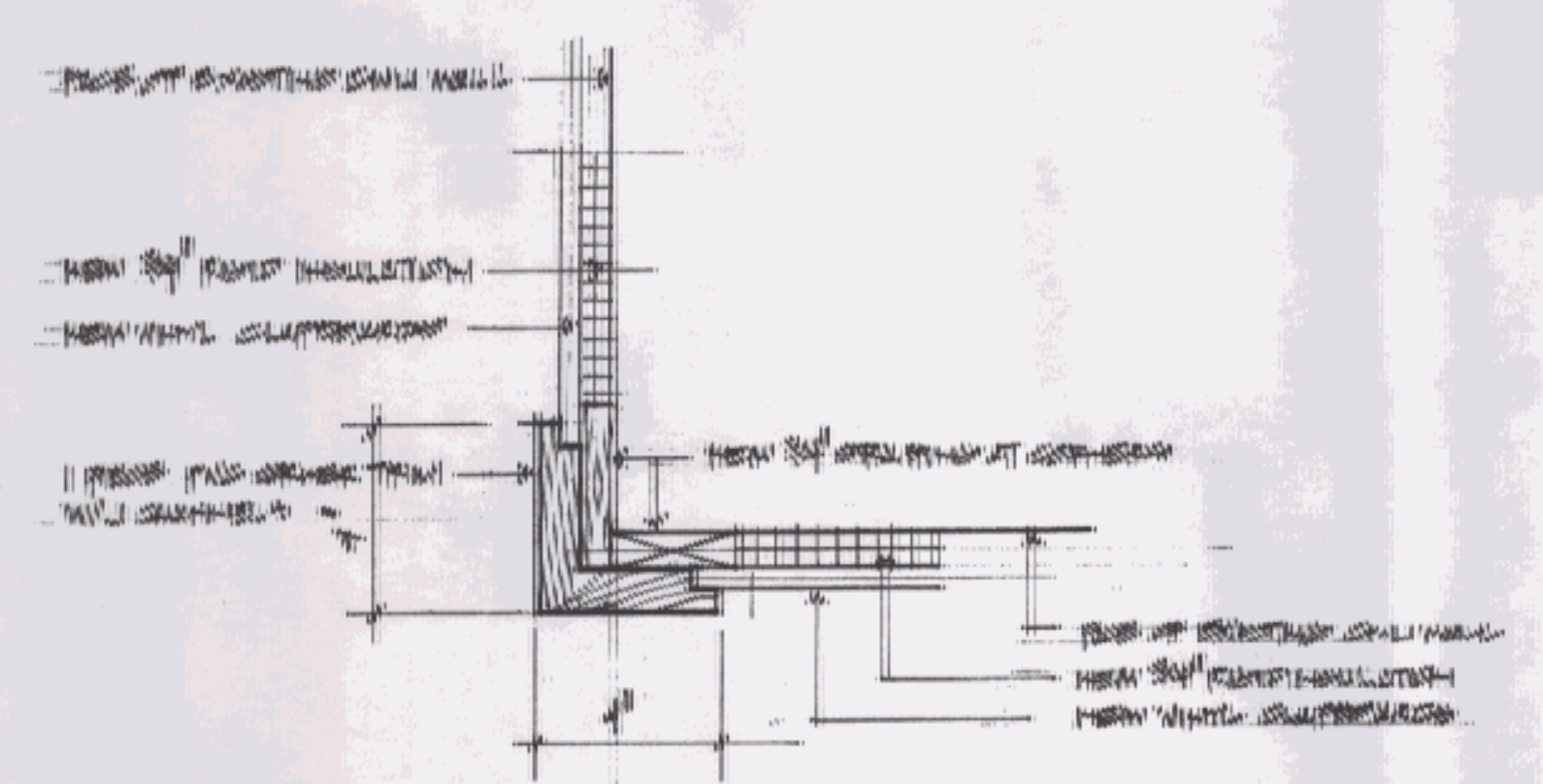
EAST ELEVATION - SURFACE ONLY



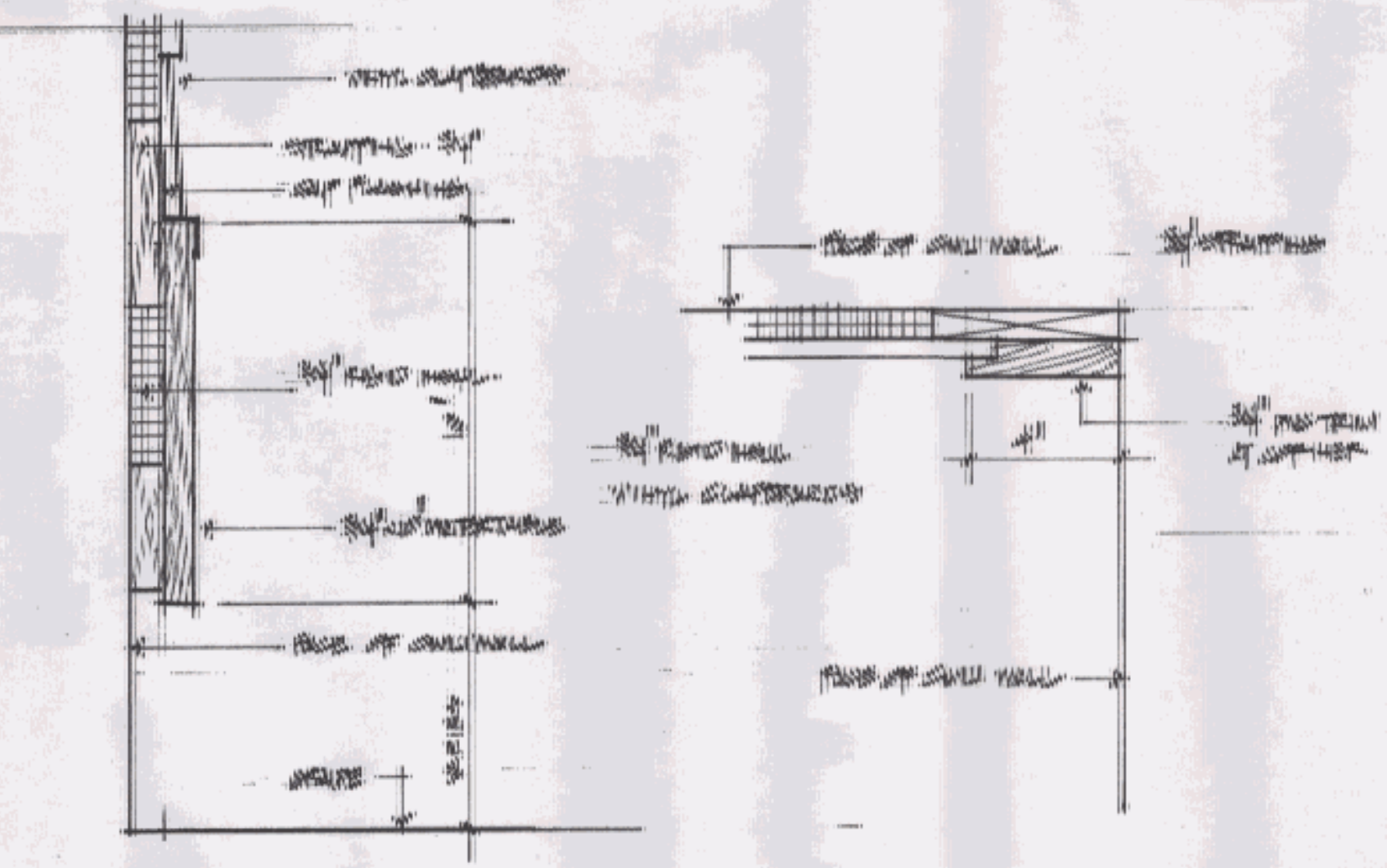
SOUTH ELEVATION



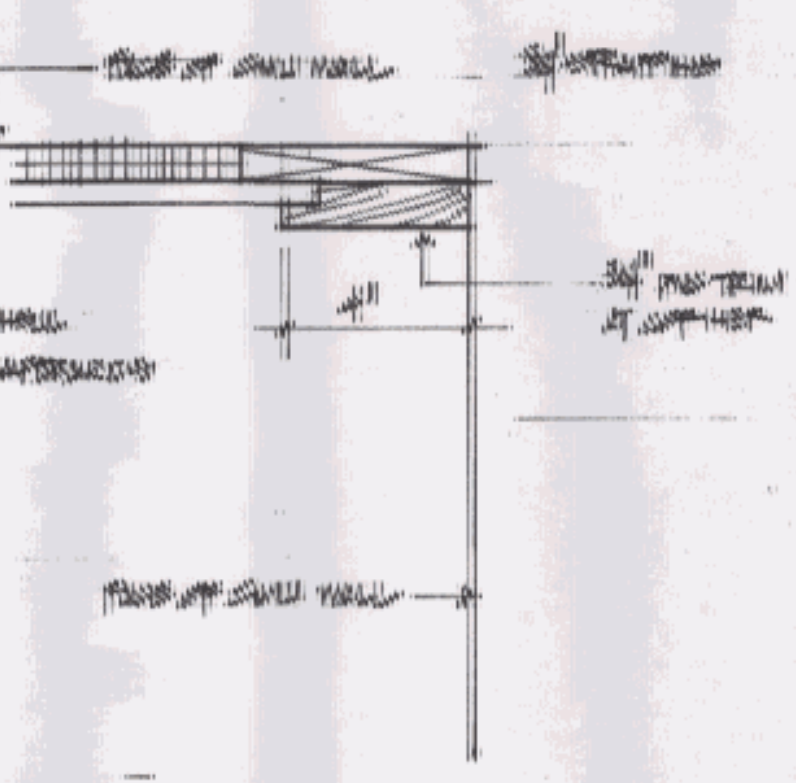
DETAIL - CORNER OF CANOPY



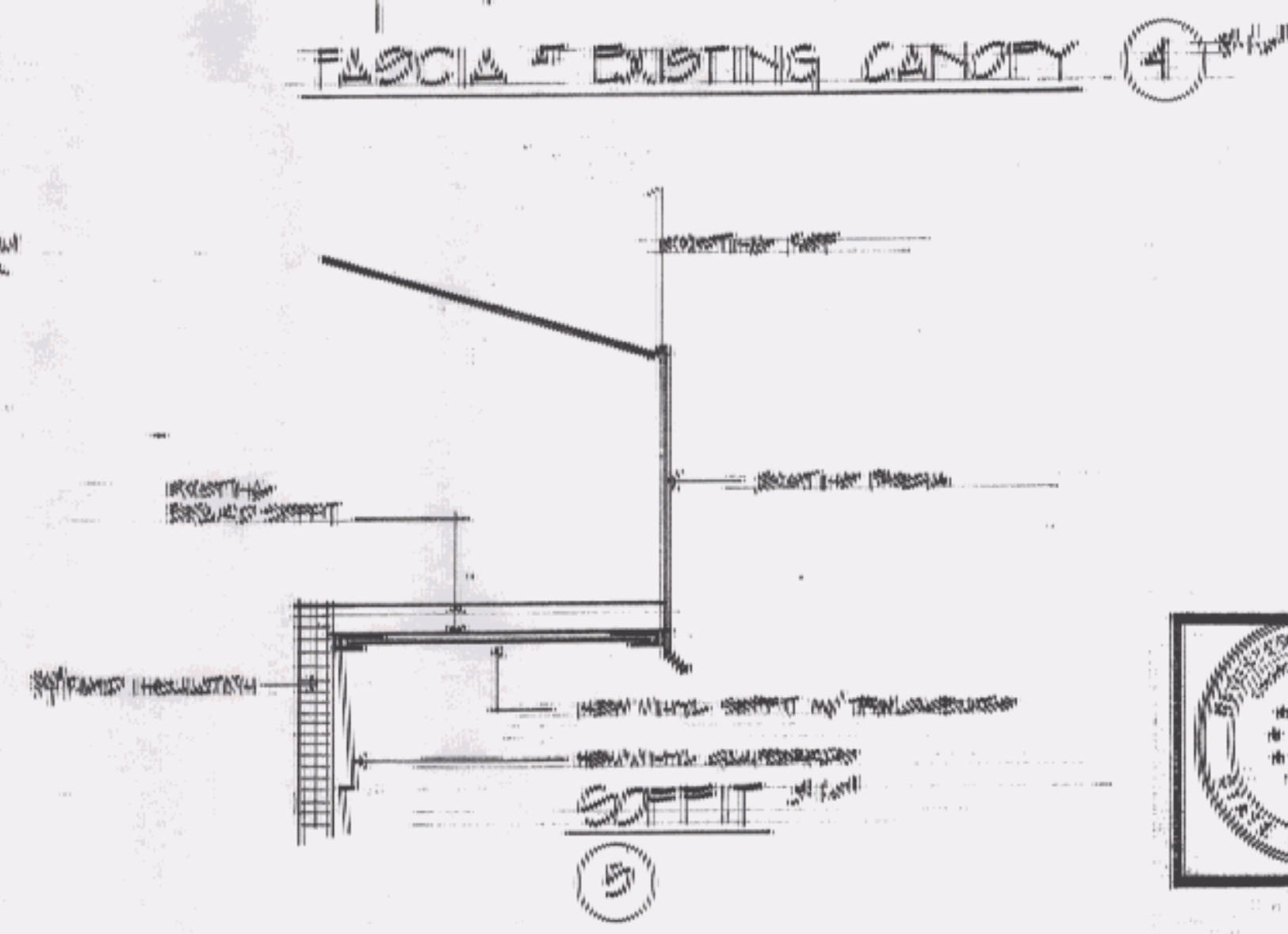
CORNER BOARD ① 3/4\"/>



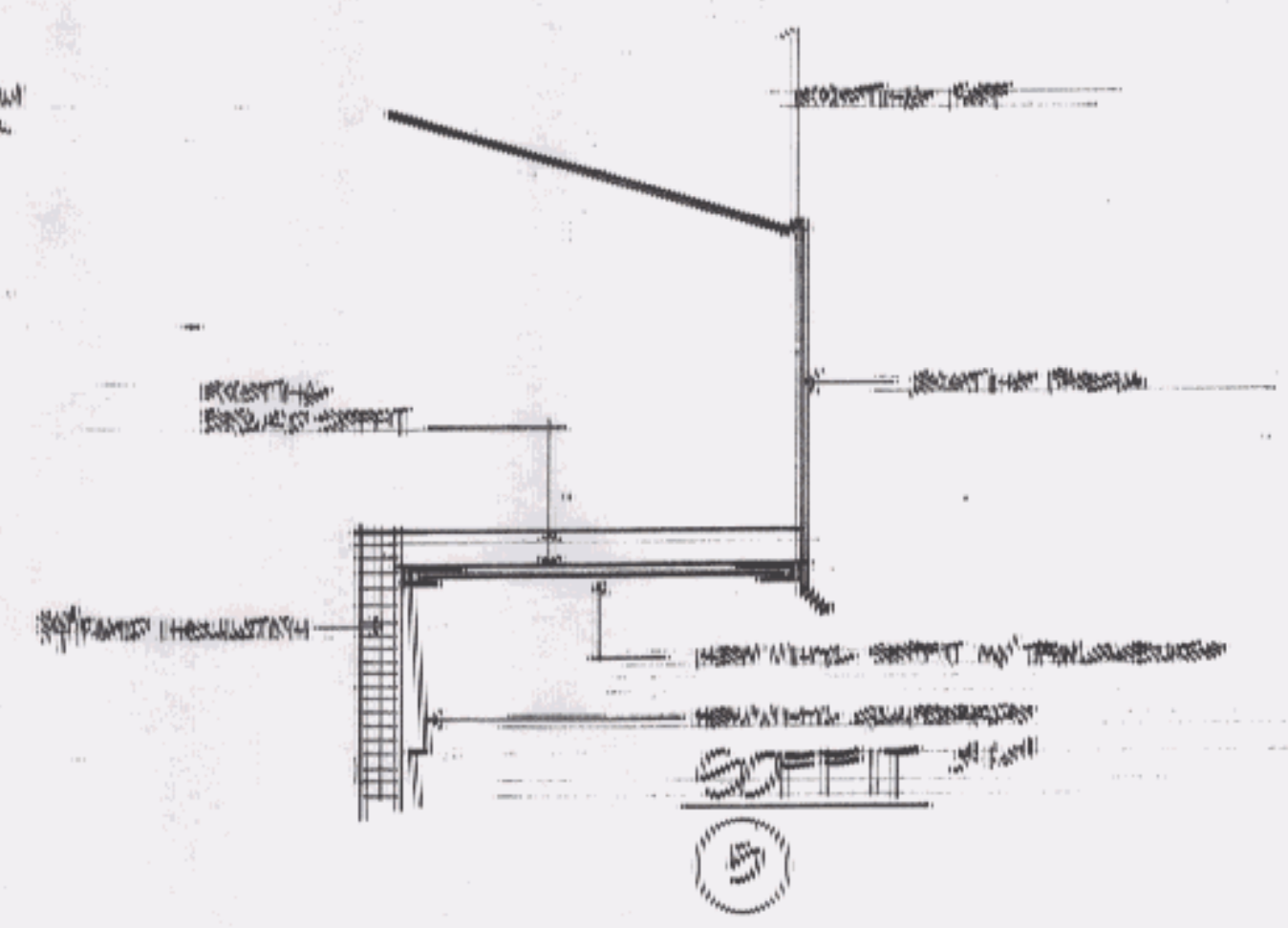
WATERTABLE ② 3/4\"/>



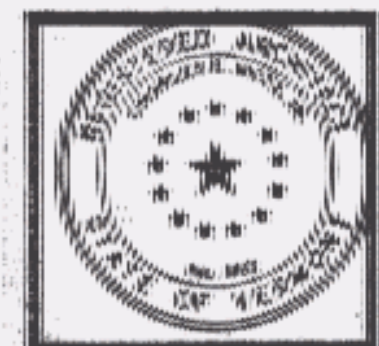
CORNER ③ 3/4\"/>



FASCIA AT EXISTING CANOPY ④ 3/4\"/>



SOFFIT ⑤ 3/4\"/>



PROJECT: EXTERIOR RENOVATION  
 LOT DISTRICT 1  
 TITLE: BRICK SHUTTER  
 EXTERIOR ELEVATION  
 DETAILS

CHARLES E. METZ  
 ARCHITECT  
 THE GRIST MILL  
 BRADFORD VT 05033

**SECTION 0800 - FINISH CARPENTRY**

**PRODUCTS**

**MATERIALS GENERAL**

The Waterable, Corner Boards, Feads, Soffits and Miscellaneous Trim shall be Polyvinyl chloride (PVC) as manufactured by KIDMAN Trimboards by Monmering, 33110 Starnwood Blvd., Huntville, AL 35891, (800) 234-3338 or VERSAFLEX as manufactured by Wolftec Technologies Inc., 1111 Leesdale Drive, Unit 121, Leesdale, PA 15228, (724) 236-7333.

**INSTALLATION**

Install the work plumb, level, true and straight with no distortions. Shim as required using concealed shims. Install to a tolerance of 1/8" in 8'-0" for plumb and level and with 1/16" maximum offset in flush adjoining surfaces, 1/8" maximum offset in revealed adjoining surfaces.

Scrub and cut work to fit adjoining work and refinish cut surfaces on repair damaged finish all cuts.

**Shimming and Running Trim:** Install with minimum number of joints possible, using full-length pieces from maximum length of lumber available to the greatest extent possible. Stagger joints in adjacent and related members. Coped at returns, miter at corners, and comply with Quality Standards for Joinery.

Install in strict accordance with manufacturer's instructions.

**PRODUCTS**

**MATERIALS GENERAL**

The Waterable, Corner Boards, Feads, Soffits and Miscellaneous Trim shall be Polyvinyl chloride (PVC) as manufactured by KIDMAN Trimboards by Monmering, 33110 Starnwood Blvd., Huntville, AL 35891, (800) 234-3338 or VERSAFLEX as manufactured by Wolftec Technologies Inc., 1111 Leesdale Drive, Unit 121, Leesdale, PA 15228, (724) 236-7333.

**INSTALLATION**

Install the work plumb, level, true and straight with no distortions. Shim as required using concealed shims. Install to a tolerance of 1/8" in 8'-0" for plumb and level and with 1/16" maximum offset in flush adjoining surfaces, 1/8" maximum offset in revealed adjoining surfaces.

Scrub and cut work to fit adjoining work and refinish cut surfaces on repair damaged finish all cuts.

**Shimming and Running Trim:** Install with minimum number of joints possible, using full-length pieces from maximum length of lumber available to the greatest extent possible. Stagger joints in adjacent and related members. Coped at returns, miter at corners, and comply with Quality Standards for Joinery.

Install in strict accordance with manufacturer's instructions.

**SECTION 0800 - PAINTING**

**PART 1 - GENERAL**

**RELATED DOCUMENTS**

The general provisions of the contract, including General and Supplementary Conditions and General Requirements, apply to the work specified in this section.

**DESCRIPTION OF WORK**

The extent of painting work is shown on the drawings and schedules, and as herein specified. Include preparation of new and existing surfaces scheduled to receive paint.

The work includes painting and finishing of exterior exposed items and surfaces throughout the project, except as herein specified.

Surface preparation, priming and coats of paint specified are in addition to shop-priming and surface treatment specified under other sections, except as otherwise specified.

Do not apply water-base paints when the temperature of surfaces to be painted and the surrounding air temperatures are below 40 deg. F., unless otherwise permitted by the paint manufacturer's printed instructions.

Do not apply solvent-thinned paints when the temperature of surfaces to be painted and the surrounding air temperatures are below 45 deg. F., unless otherwise permitted by the paint manufacturer's printed instructions.

Do not apply paint in snow, rain, fog or mist or when the relative humidity exceeds 85%, or to damp or wet surfaces, unless otherwise permitted by the paint manufacturer's printed instructions. Painting may be continued during inclement weather only if the areas and surfaces to be painted are enclosed and heated within the temperature limits specified by the paint manufacturer during application and drying periods.

**PART 2 - PRODUCTS**

**MANUFACTURERS**

Pratt & Lambert products are used to designate the paint materials and types. Equal products by Benjamin Moore, Pittsburgh Paints, Sherwin Williams may be submitted to the Architect for approval.

**MATERIAL QUALITY**

Provide the best quality grade of the various types of coatings as regularly manufactured by approved paint materials manufacturer. Materials not displaying the manufacturer's identification as a standard, best-grade, product will not be acceptable.

Provide unbleached paint produced by the same manufacturer as the finish coats. Use only thinners approved by the paint manufacturer, and use only with recommended limits.

**SECTION 0840 - Vinyl Siding and Accessories**

**PART 1 - GENERAL**

**SCOPE OF WORK**

Furnish labor, materials and equipment required to complete installation of Alico Vinyl Siding and all other related work indicated on drawings or specified items.

**MANUFACTURERS**

A. Alico Building Products, Inc., 1921 Michigan Street, P.O. Box 57, Sidney, OH 45385-0057; (800) 833-8973.

**MATERIALS**

M. Solid vinyl siding: extruded polyvinyl chloride (PVC) compound as defined in ASTM D 2673-93 and ASTM D 4477-94. Vinyl siding to exceed requirements for thickness per ASTM D 2673-93 section 4.2.

B. Product must meet or exceed the following requirements:

Tensile strength (PSI)	7,100 - 7,800
Tensile modulus (PSI)	300,000 - 400,000
Specific gravity	1.38 - 1.48
Hardness (Shore-D)	78 ± 3
Head deflection under load 264 psi	110"
ICOD Impact strength (ft-lbs/in. of notch)	3.3
Chemical resistance	Excellent
Coefficient of expansion (in./in./°F)	2.6 (1/37) ± 1/25

C. Fire-resistance Ratings:

ASTM E 84	less than 30	ASTM E 635	less than 5 sec.
Flame spread	0	Avg. time of burning	30 min
Fuel contribution	0	Avg. length of burning	30 min
Smoke density	400	ASTM D 3842 (UBC 8-93-2)	
		Smoke density	48

**SHOW DESCRIPTION**

**PREMIUM SIDING BY ALICO**

Vinyl Siding: GRAND SIERRA, Low-gloss color grain texture.

Double 4" x8-48  
Max. Thickness  
Length  
12' 0"

Premium Color:

**EXTERIOR HOLLOW METAL**

P.H. Spec. 21109 Alkyd Gloss  
1 coat P.H. Protective Primer Suptime No. 8  
2 coats P.H. Effect Enamel

**EXTERIOR PAINTED WOOD**

P + L Spec. 321.03  
1 coat P + L Exterior Latex Primer  
2 coats P + L Aqua Poly - satin finish

**EXTERIOR CONCRETE MASONRY UNITS**

1 coat Pro-Hide Silver Heavy Duty Latex Block Filler  
1 coat Aqua Shell

Other Paint System(s) as required, and as recommended by paint manufacturer for substrates encountered, where not specifically noted above.

**PART 2 - EXECUTION**

**Examination:** Examine substrates and conditions under which painting will be performed for compliance with requirements. Do not begin application until unsatisfactory conditions have been corrected.

**Surface Preparation:** Clean and prepare surfaces to be painted according to the manufacturer's instructions for each particular substrate condition and as specified.

**APPLICATION**

**General:**

Apply paint in accordance with the manufacturer's directions. Use applicators and techniques best suited for the type of material being applied.

**Cleanups:** During the progress of the work, remove from the project daily all discarded paint materials, rags, cans and rags.

Upon completion of painting work, clean all window glass and other paint-splattered surfaces. Remove splattered paint by proper methods of washing and scraping, using care not to scratch or otherwise damage finished surfaces.

**Protection:** Protect work of other trades, whether to be painted or not, against damage by painting and finish work. Correct any damages by cleaning, repairing or replacing, and repainting, as directed by the Architect.

Provide "Wet Paint" signs as required to protect newly-painted finishes.

**SECTION 0850 - METAL ROOFING**

**PART 1 - GENERAL**

**RELATED DOCUMENTS**

Drawings and general provisions of Contract, including General and Supplementary Conditions and Division-1 Specifications sections, apply to work of this section.

**DESCRIPTION OF WORK**

Extent of each type of roofing, siding and flashing work is indicated on drawings and by provisions of this section.

Types of work specified in this section include the following:

Standing seam metal roofing 28 ga. minimum. Color to be as selected by architect.

Metal flashings and base counterflashings.

Exposed metal trim.

Miscellaneous sheet metal accessories.

**QUALITY ASSURANCE**

**Guarantee:** Submit written guarantee against loss of watertightness due to faults or defects in material or workmanship. Guarantee period to two (2) years from date of substantial completion. Defects include but are not limited to the following:

- leaking
- excessive wrinkling/buckling
- loose parts
- galvanic action between roofing and dissimilar materials
- failure to meet performance standards of metal finish

**JOBS CONDITIONS**

Coordinate work of this section with interfacing and adjoining work for proper sequencing of each installation. Ensure best possible weather resistance and durability of work and protection of materials and finishes.

**PART 2 - PRODUCTS**

**Metal Flashing:** Same material and finish as roofing and siding.

**Miscellaneous Materials and Accessories:**

**Metal Accessories:** Provide sheet metal clips, straps, anchoring devices and similar accessory units as required for installation of work, matching or compatible with material being installed, noncorrosive, size and gage required for performance.

**Fasteners:** Same metal as flashing/sheet metal or other noncorrosive metal as recommended by sheet manufacturer. Match finish of exposed heads with material being fastened.

**SECTION 0900 - THERMAL INSULATION**

**PART 1 - GENERAL**

**RELATED DOCUMENTS**

Drawings and general provisions of the contract, including General and Supplementary Conditions and Division 1 Specification Sections, apply to this section.

**DESCRIPTION OF WORK**

The extent of thermal insulation work is shown on the drawings, and indicated by provisions of this section.

**PART 2 - PRODUCTS**

**MATERIALS**

**Extruded Polystyrene Board Insulation:** Rigid, cellular polystyrene thermal insulation with closed cells and integral high density skin, formed by the expansion of polystyrene base resin in an extrusion process to comply with ASTM C 578 for type indicated; with 5-year aged  $\rho$ -values of 5.4 and 5 at 40 and 75 deg F (4.4 and 3.3 @ deg. C), respectively; and as follows:

Type IV, 1.8 pcf/min. density, unless otherwise indicated.

**Surface Burning Characteristics:** Maximum flame spread and smoke developed values of 75 and 450, respectively.

**Manufacturer:** Subject to compliance with requirements, provide products of one of the following:

- AMOCO Foam Products Co.
- Dow Chemical Co., Midland, MI.
- UC Industries/US Gypsum, Chicago, IL.



PROJECT:  
EXTERIOR RENOVATIONS  
DISTRICT 4  
TITLE: EXISTING ROOFING  
SPECIFICATIONS

CHARLES E. METZ  
ARCHITECT  
THE GRIST MILL  
BRADFORD VT 05033

DRAWING:  
A3  
12 SEP. 00