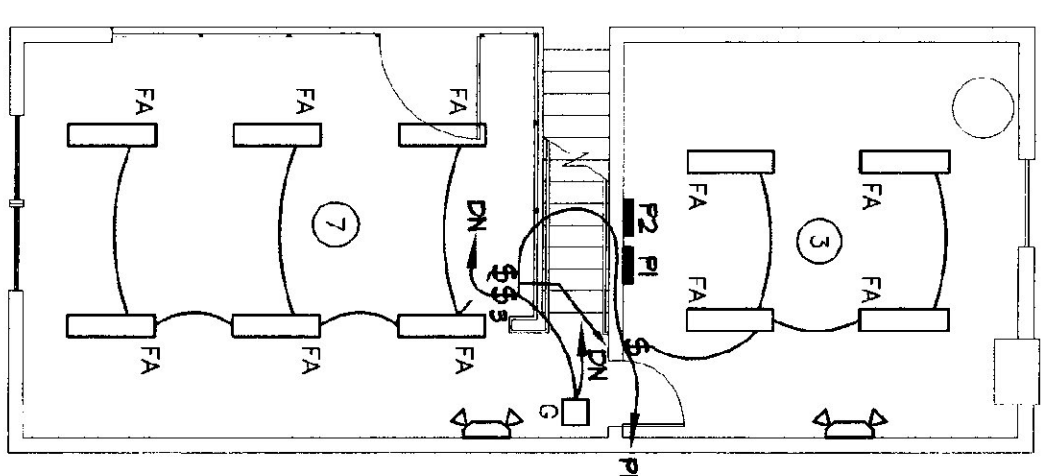
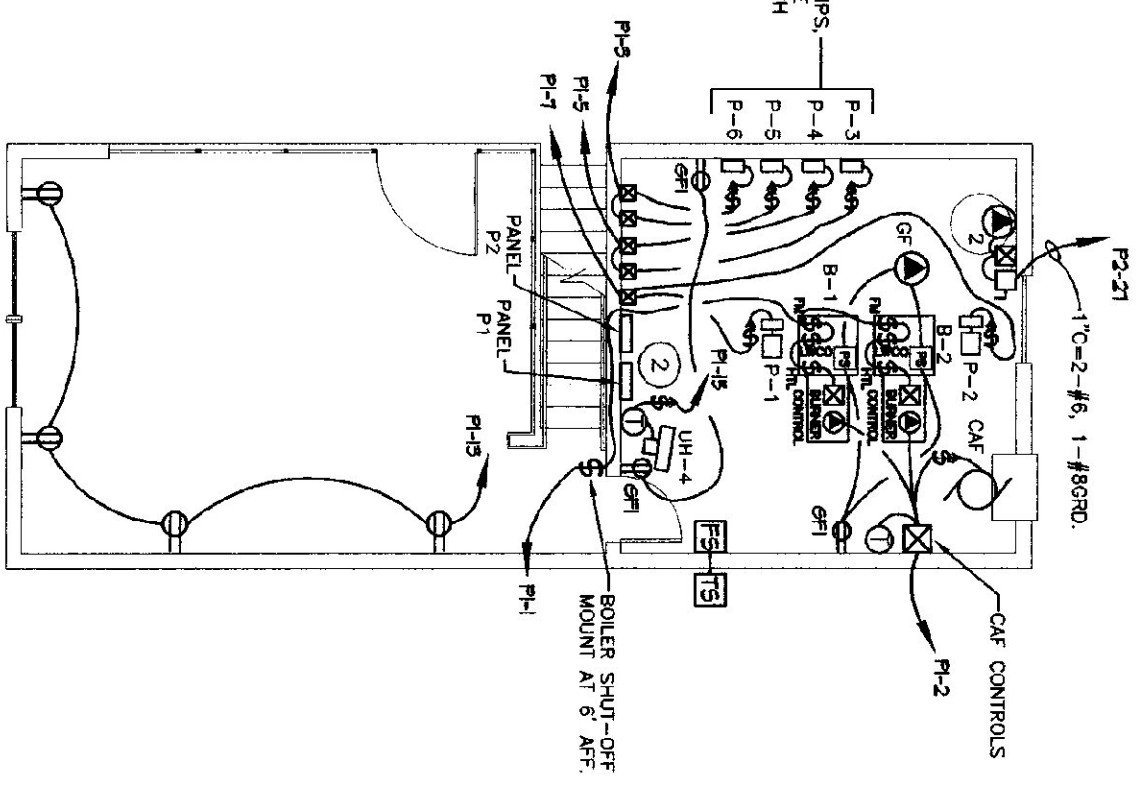


FLOOR PLAN - LIGHTING
SCALE: 1/8" = 1'-0"

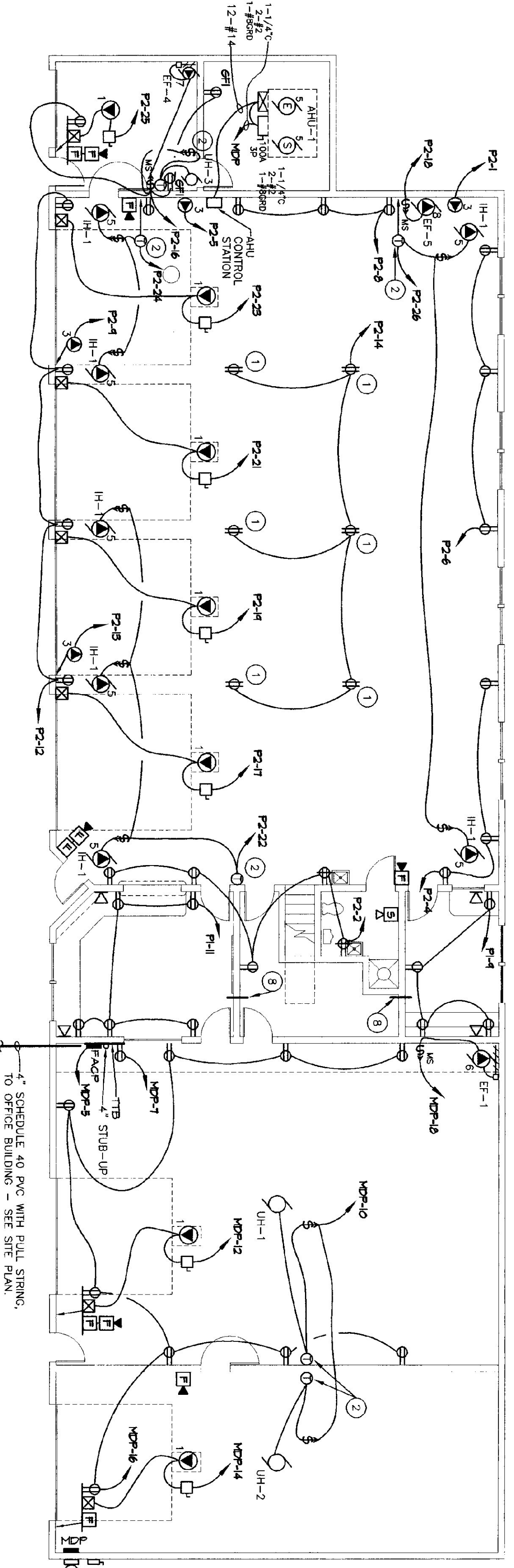
UPPER FLOOR PLAN - LIGHTING
SCALE: 1/8" = 1'-0"



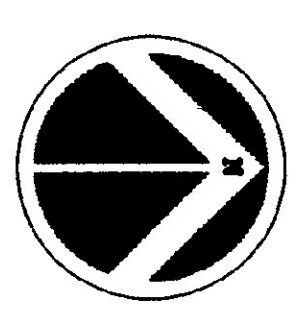
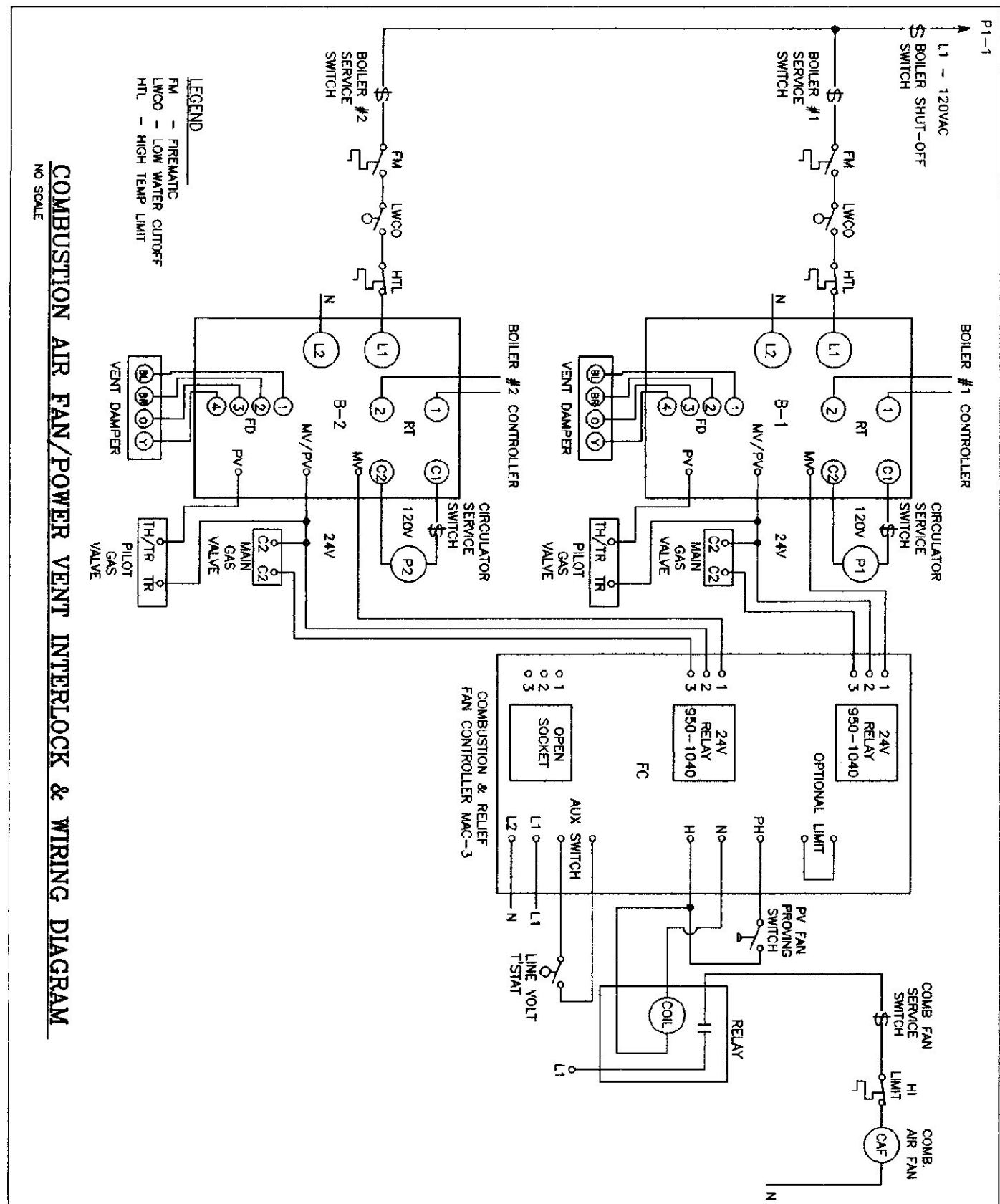
UPPER FLOOR PLAN - POWER
SCALE: 1/8" = 1'-0"



- KEYED NOTES:**
- 1 JUNCTION BOX ON TRUSS WITH SO CORO DROP TO 60" AFF. CORO SECURED AT TRUSS WITH KELLUM'S GRIP. MAINTAIN CLEARANCE FROM INFRA RED HEATERS
 - 2 LINE VOLTAGE THERMOSTAT SUPPLIED BY M.C. INSTALLED BY EC.
 - 3 COORDINATE LIGHT FIXTURE LAYOUT WITH MECHANICAL EQUIPMENT.
 - 4 PROVIDE 2 POLE LIGHT SWITCHES.
 - 5 SURFACE MOUNT LIGHT FIXTURES TO BOTTOM OF CONCRETE DECK FOR CONCEAL CONDUIT IN CONCRETE DECK. FLUSH MOUNT JUNCTION BOXES FOR LIGHT FIXTURES.
 - 6 RECESS LIGHT FIXTURE IN SHOWER CEILING.
 - 7 CENTER LIGHT FIXTURES BETWEEN TRUSSES. BOTTOM OF FIXTURE TO BE EVEN WITH BOTTOM OF TRUSSES.
 - 8 PROVIDE (2) 1" SLEEVES FOR FUTURE DATA CABLES AT JUNCTION OF WALL AND CEILING.



FLOOR PLAN - POWER
SCALE: 1/8" = 1'-0"



Gosens Bachman
 Architecture and Interior Design
 Gosens Bachman, Inc.
 66 Granite Shed Lane
 Montpelier, Vermont 05602
 Tel: 802.229.1664
 Fax: 802.229.1664
 Email: GosensBachman@aol.com

Peterson & Associates
 100 North Main Street
 P.O. Box 410 Stowe, Vermont 05672
 Tel: 802.229.1664
 Fax: 802.229.1664
 Email: GosensBachman@aol.com

