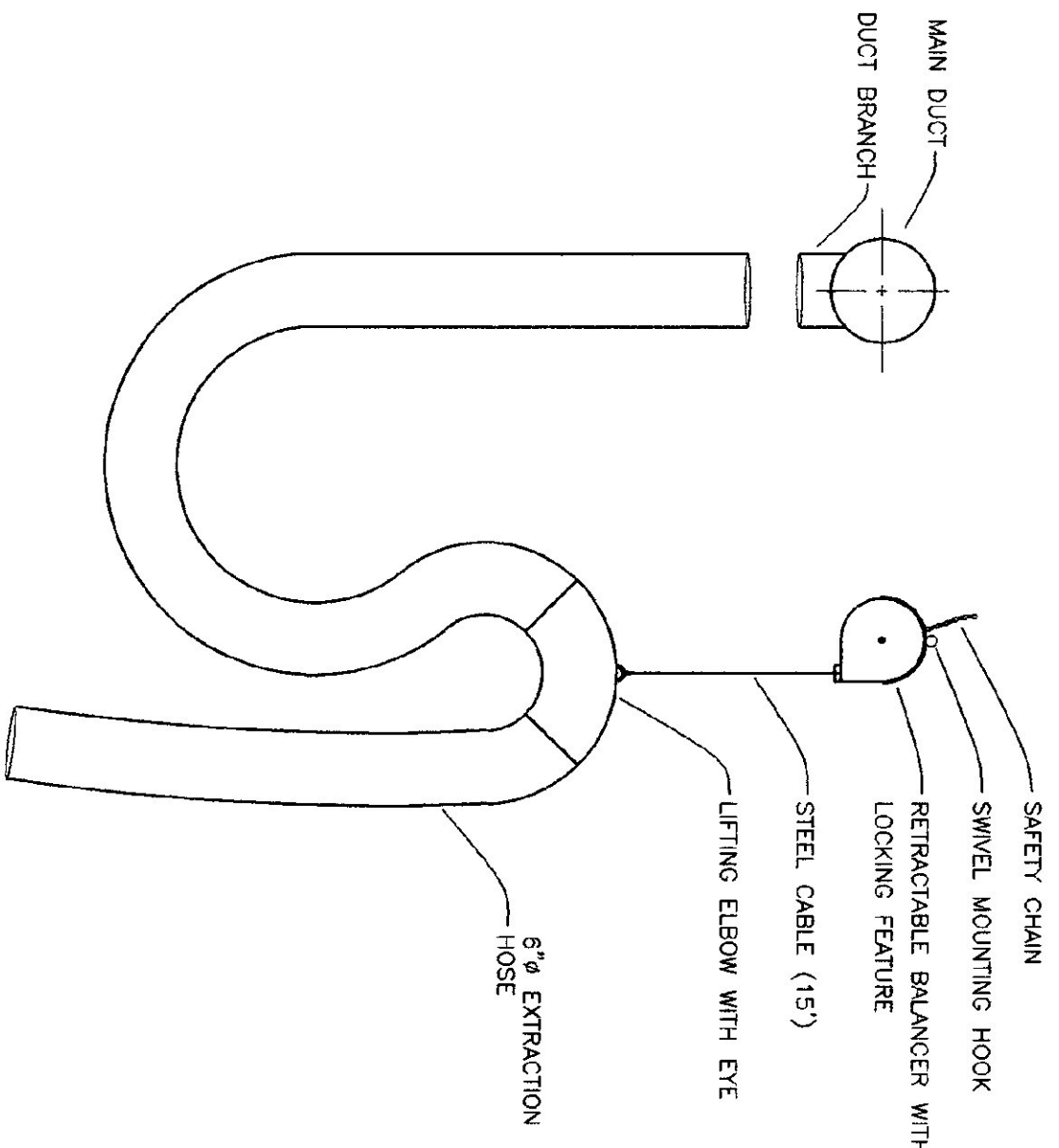


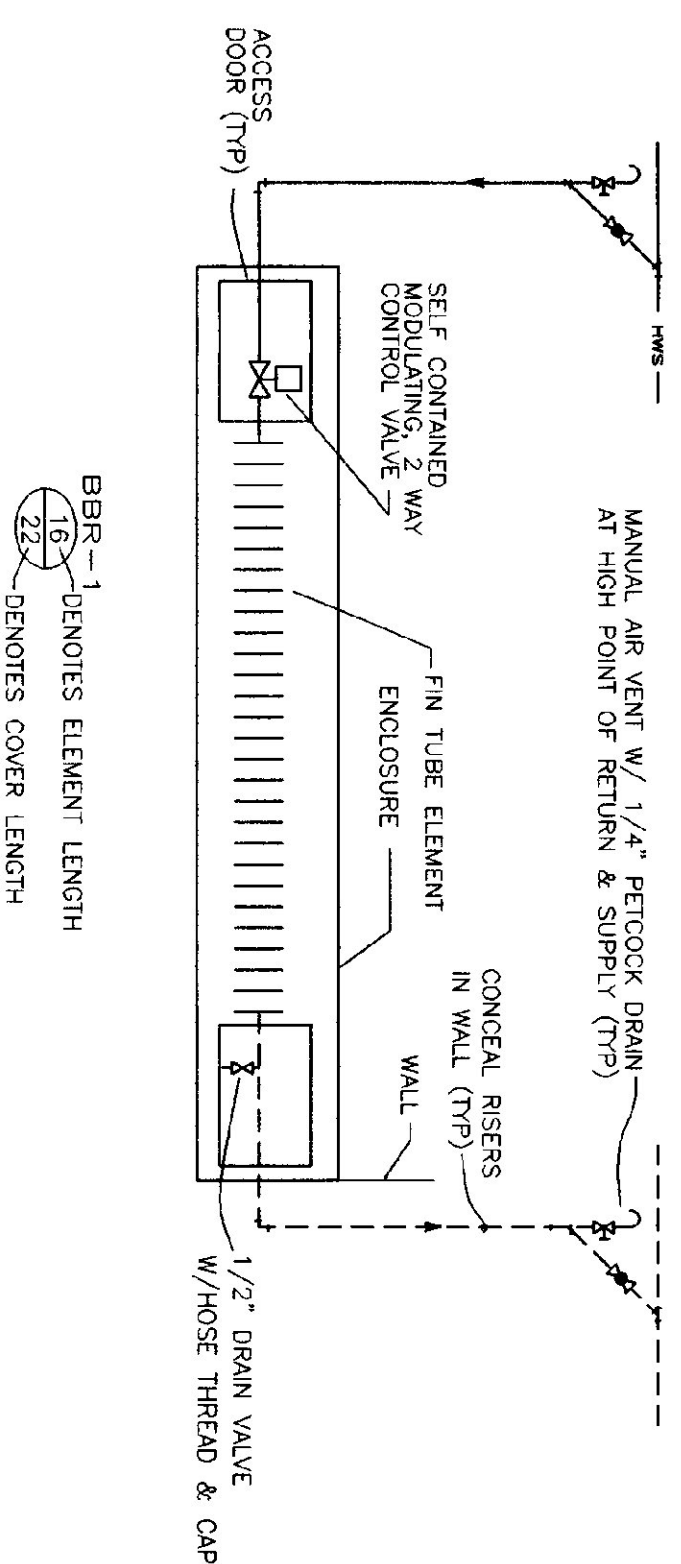
UNIT HEATER PIPING SCHEMATIC DIAGRAM
NO SCALE



RETRACTABLE OVERHEAD EXTRACTION SYSTEM DETAIL
NO SCALE

ITEM	MANUFACTURER	MODEL #	GPM	FT HEAD	HP	VOLT	PH	SPD
P-1	TACO	005	12	5	1/35	115	1	1
P-2	TACO	005	12	5	1/35	115	1	1
P-3	TACO	007	6	9	1/25	115	1	1
P-4	TACO	0013	18	15	1/8	115	1	1
P-5	TACO	0013	17	15	1/8	115	1	1
P-6	TACO	005	10	6	1/25	115	1	1

PUMP SCHEDULE



TYPICAL BBR-1 BASEBOARD PIPING DETAIL
NO SCALE

MECHANICAL LEGEND	
---	HOT WATER SUPPLY
---	HOT WATER RETURN
Δ	AIR VENT
○	BALL VALVE
→	FLOW CHECK
→	FLOW DIRECTION
○	PIPE UP
○	PIPE DOWN
○	PRESSURE GAUGE
○	TEMPERATURE/PRESSURE PORT
○	UNION
○	ABOVE FINISH FLOOR
○	BASEBOARD RADIATION
○	DOMESTIC HOT WATER TANK
○	ELECTRICAL CONTRACTOR
○	GLYCOL FEEDER
○	M/C
○	AHU
○	AIR HANDLING UNIT
○	SUPPLY REGISTER
○	UNIT HEATER

MECHANICAL LEGEND

ITEM	DESCRIPTION
HOOD	36" X 24" 18 GAUGE BLACK IRON HOOD WITH EPOXY COATING. 10' COLLAR. MONOUMENT F15324
EXTRACTION ARM	10' X 6" WALL MOUNT EXTRACTION ARM WITH BRACKET. MONOUMENT 15105
RETRACTABLE OVERHEAD EXTRACTION SYSTEM	24' X 6" HOSE BALANCER WITH SAFETY CHAIN AND LIFTING ELBOW. MONOUMENT 11246-D TAPERED CONE NOZZLE. MONOUMENT TCA-6 MAGNETS (2 PER NOZZLE). MONOUMENT MAG SLIDE GATE. MONOUMENT 23816 SLIDE. MONOUMENT SL-6

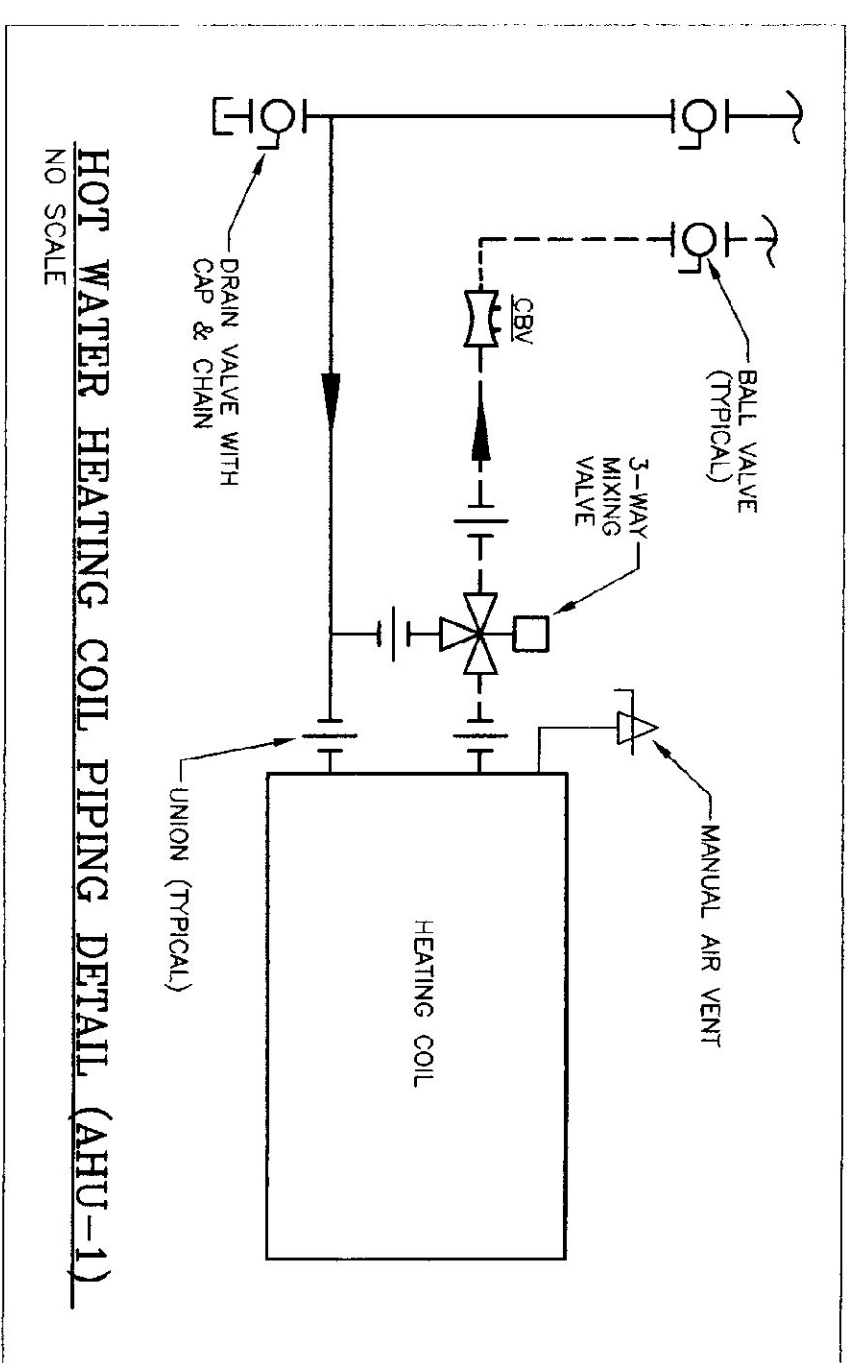
SOURCE CAPTURE SCHEDULE

ITEM	DESCRIPTION
AE	AIR ELIMINATION VALVE. SPRIOTERM QUICK AIR RELEASE
AS-1	AIR SEPARATOR. SPRIOTERM DIRT DRAIN 2"
BBR-1	BASEBOARD RADIATOR 770 BTUH / FT @ 180°F EMT. 4 GPM. 65°F EMT. VALICAN MODEL NO. FS-210. SELF CONTAINED THERMOSTAT/CONTROL VALVE.
B-1	BOILER. BUDERUS MODEL NO. G23KX-45. PROVIDE WITH PROPANE AND FLEX LINE. 230 VOLT ONE PHASE GROSS RATING 187 MBTU/HR. NET IFR 154 MBTU/HR OUTPUT. 84% EFFICIENCY. ACCESSORIES: 30LB RELIEF VALVE. AQUASTAT. MANUAL RESET LOW WATER CUTOFF. MANUAL RESET HIGH TEMPERATURE LIMIT. 2" MANIFOLD SET. UL BURNER CONTROL. 4" VENT DAMPER ADAPTER. H2015 ECONOMIC CONTROL. PROVIDE 4" HIGH CONCRETE PAD WITH ANGLE IRON BOILER SUPPORT. PROVIDE VENT TERMINATION CAP & ABOVE THE ROOF LINE.
B-2	FIELD BURNER. BUDERUS MODEL NO. TBS-1800. PROVIDE WITH PROPANE AND FLEX LINE. 230 VOLT ONE PHASE GROSS RATING 187 MBTU/HR. NET IFR 154 MBTU/HR OUTPUT. 84% EFFICIENCY. ACCESSORIES: 30LB RELIEF VALVE. AQUASTAT. MANUAL RESET LOW WATER CUTOFF. MANUAL RESET HIGH TEMPERATURE LIMIT. 2" MANIFOLD SET. UL BURNER CONTROL. 4" VENT DAMPER ADAPTER. H2015 ECONOMIC CONTROL. PROVIDE 4" HIGH CONCRETE PAD WITH ANGLE IRON BOILER SUPPORT. PROVIDE VENT TERMINATION CAP & ABOVE THE ROOF LINE.
DHW-1	DOMESTIC HOT WATER TANK. BUDERUS MODEL NO. TBS-1800. PROVIDE WITH PROPANE AND FLEX LINE. 230 VOLT ONE PHASE GROSS RATING 187 MBTU/HR. NET IFR 154 MBTU/HR OUTPUT. 84% EFFICIENCY. ACCESSORIES: 30LB RELIEF VALVE. AQUASTAT. MANUAL RESET LOW WATER CUTOFF. MANUAL RESET HIGH TEMPERATURE LIMIT. 2" MANIFOLD SET. UL BURNER CONTROL. 4" VENT DAMPER ADAPTER. H2015 ECONOMIC CONTROL. PROVIDE 4" HIGH CONCRETE PAD WITH ANGLE IRON BOILER SUPPORT. PROVIDE VENT TERMINATION CAP & ABOVE THE ROOF LINE.
ET-1	EXPANSION TANK. EXTROL AX40-HORIZONTAL.
GF	GLYCOL FEEDER. 50 GALLON TANK WITH COVER. LMI 26350. ELECTROMAGNETIC OPERATING PUMP LMI 151-191. 1" LIQUID LEVEL SWITCH - PUMP CONTROL. LMI 26731. PRESSURE RELIEF. HONEYWELL L404A1370
UH-1	UNIT HEATER. 99,900 BTU/HR @ 180°F EMT. 160°F LMT. 10.0 GPM. 0.9 WPD. 60°F EMT. 30% PROPYLENE GLYCOL. VALICAN MODEL NO. V1144. 1/4HP. 115 VAC.
UH-2	UNIT HEATER. 70,000 BTU/HR @ 180°F EMT. 160°F LMT. 7.0 GPM. 0.3 WPD. 60°F EMT. 30% PROPYLENE GLYCOL. VALICAN MODEL NO. V1104. 1/20 HP. 115 VAC.
UH-3	UNIT HEATER. 18,400 BTU/HR @ 180°F EMT. 160°F LMT. 1.9 GPM. 2.2 WPD. 60°F EMT. 30% PROPYLENE GLYCOL. VALICAN MODEL NO. HV-1184. 1/30 HP. 115 VAC.
UH-4	UNIT HEATER. 18,400 BTU/HR @ 180°F EMT. 160°F LMT. 1.9 GPM. 2.2 WPD. 60°F EMT. 30% PROPYLENE GLYCOL. VALICAN MODEL NO. HV-1194. 1/30 HP. 115 VAC.
IH-1	INFRA-RED HEATER. SE-JERBER RAY MODEL NO. DHS30-755-2. OR EQUAL. PROVIDE WITH CHAINS. LINE VOLTAGE THERMOSTAT. BLEDGET VENT CAP. NO. Y-DUAL EXHAUST ASSEMBLY FOR COMMON EXHAUST WHERE REQUIRED. WV-4 WALL INTAKE CAP WITH BRD SCREEN. ALL MAGNETS. REFLECTORS. PIPED ROOF CURB FOR EXHAUST VENTS. PROVIDE 4" HIGH CONCRETE PAD WITH ANGLE IRON BOILER SUPPORT. PROVIDE VENT TERMINATION CAP & ABOVE THE ROOF LINE.
CAF	COMBUSTION AIR FAN. TIERNLUND PRODUCTS, INC. MODEL NO. PA-4. 400,000 BTU/HR INPUT. 115/1/60 VOLTS. PROVIDE WITH WALL INTAKE HOOD.
AHU-1	AIR HANDLING UNIT HEATX UNIT MODEL NO. H-1-30A-1200. OR EQUAL. 3000 CFM. 115/1/60 VOLTS. PROVIDE WITH WALL INTAKE SECTION 15790 FOR FURTHER INFORMATION.
FF	FILTER. AQUA PURE MODEL NO. SS1HA

MECHANICAL EQUIPMENT SCHEDULE

ITEM	DESCRIPTION
L-1	LOUVER. CARNES MODEL NO. FPA, EXTRUDED ALUMINUM. STATIONARY DRAMABLE BLADE. 60" WIDE X 36" HIGH. 4" CENTERS WITH 6" FRAME. BRD SCREEN AND COLOR TO BE SELECTED BY ARCHITECT.
L-2	LOUVER. CARNES MODEL NO. FPA, EXTRUDED ALUMINUM. STATIONARY DRAMABLE BLADE. 60" WIDE X 36" HIGH. 4" CENTERS WITH 6" FRAME. BRD SCREEN AND COLOR TO BE SELECTED BY ARCHITECT.
L-3	LOUVER. CARNES MODEL NO. FPA, EXTRUDED ALUMINUM. STATIONARY DRAMABLE BLADE. 60" WIDE X 36" HIGH. 4" CENTERS WITH 6" FRAME. BRD SCREEN AND COLOR TO BE SELECTED BY ARCHITECT.
SR-1	SUPPLY REGISTER. CARNES MODEL NO. PARAH. 48" WIDE X 36" HIGH. WHITE ALUMINUM.

LOUVERS, GRILLS, REGISTERS, DIFUSERS SCHEDULE



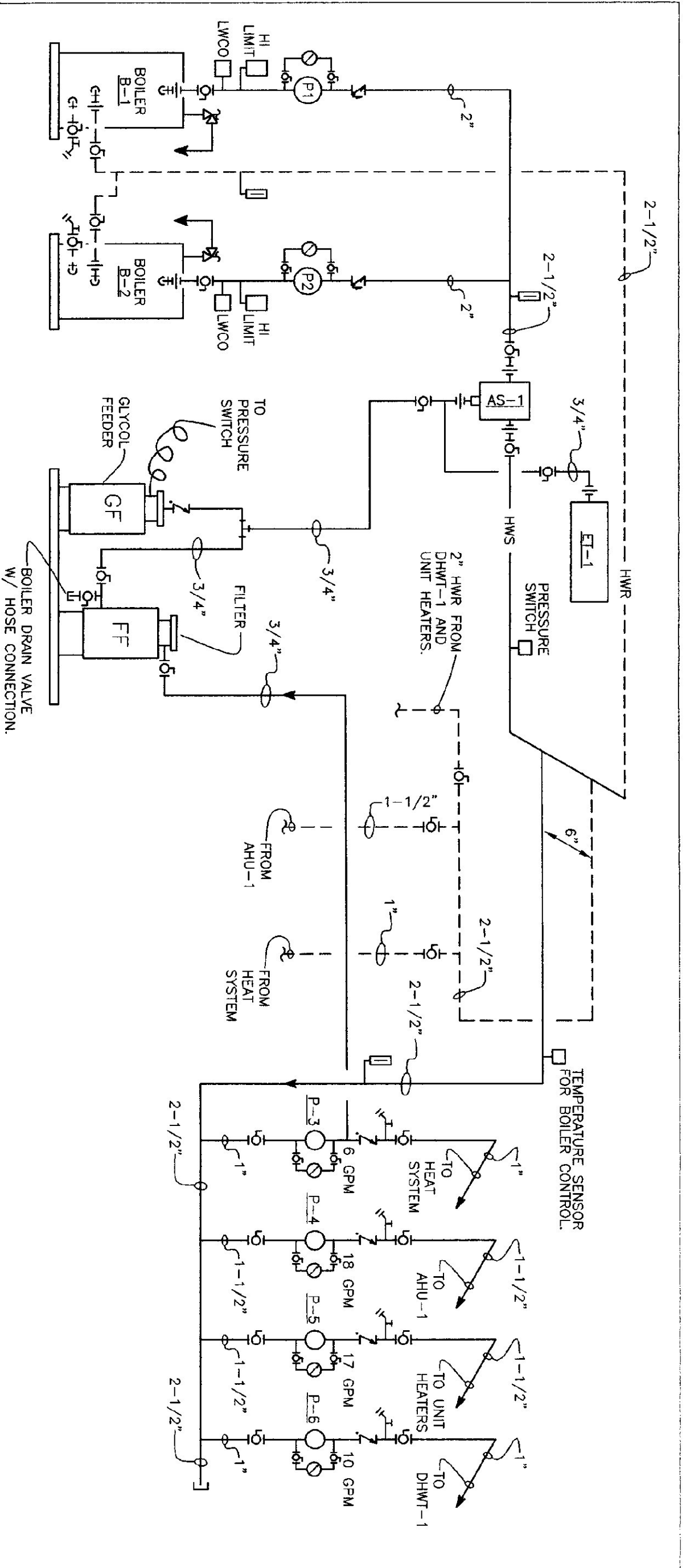
HOT WATER HEATING COIL PIPING DETAIL (AHU-1)
NO SCALE

TAG	UNIT	TYPE	ESP	MOTOR HP	MAX. RPM	VOLTAGE	MOTOR STARTER	DESIGN BASIS	MODEL No.	REMARKS
EF-1	2300	PROPELLER	0.25	1/3	510	120/1/60	CUTLER HAMMER	CARNES	LWB-30	1
EF-2	100	IN-LINE	0.25	1.2 AMPS	120/1/60	SWITCH BY EC	CARNES	VCD8015		2
EF-3	200	IN-LINE	0.38	2.3 AMPS	120/1/60	SWITCH BY EC	CARNES	VCD8030		2
EF-4	400	PROPELLER	0.125	1/3	1500	120/1/60	MANUAL MOTOR STARTER	CARNES	LVK-10K2	1
EF-5	600	UTILITY SET	4.0	1.5	3977	240/1/60	MANUAL MOTOR STARTER	CARNES	905 RB0/R	3

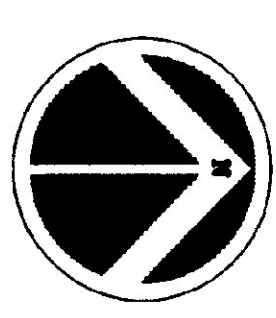
EXHAUST FAN SCHEDULE


- ACCESSORIES TO INCLUDE: OSHA GUARD, WALL BOX, DAMPER W/ACTUATOR, WEATHER HOOD, "DELA-ON" TIMER AND INTEGRAL FACTORY MOUNTED DISCONNECT SWITCH.
- ACCESSORIES TO INCLUDE: WALL CAP, BACKDRAFT DAMPER, NEOPRENE ISOLATORS AND INTEGRAL FACTORY MOUNTED DISCONNECT SWITCH.
- ACCESSORIES TO INCLUDE: SPRING VIBRATION ISOLATORS, MOTOR & BELT GUARD AND INLET & OUTLET FLANGES.

HOT WATER PIPING SCHEMATIC DIAGRAM
NO SCALE



BOILER DRAIN VALVE W/ HOSE CONNECTION.


Gossens Bachman
 Architecture and Interior Design
 Gossens Bachman, Inc.
 100 State Street
 Montpelier, Vermont 05602
 Tel: 802.229.1664
 Fax: 802.229.4822
 Email: gossensbachman.com

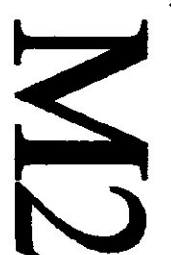

Pearson & Associates
 Mechanical Engineers
 100 State Street
 Montpelier, Vermont 05602
 Tel: (802) 229-1667 Fax: (802) 229-1250
 Email: pearson@pearsonme.com


 STATE OF VERMONT
 PROFESSIONAL ENGINEER
 No. 15790

Project Title:
 STAIR OF VERMONT
 AGENCY OF TRANSPORTATION
 DISTRICT NO. 9
 MAINTENANCE GARAGE
 DERBY, VERMONT

Revisions:
 Job Number: A07B
 File Name: A07B
 Drawn By: TTY
 Checked By: KSP
 Scale: As Shown
 Date: August 1999

Sheet Title:
 Mechanical Details
 and Schedules

Sheet Number:


© Gossens Bachman, Inc.