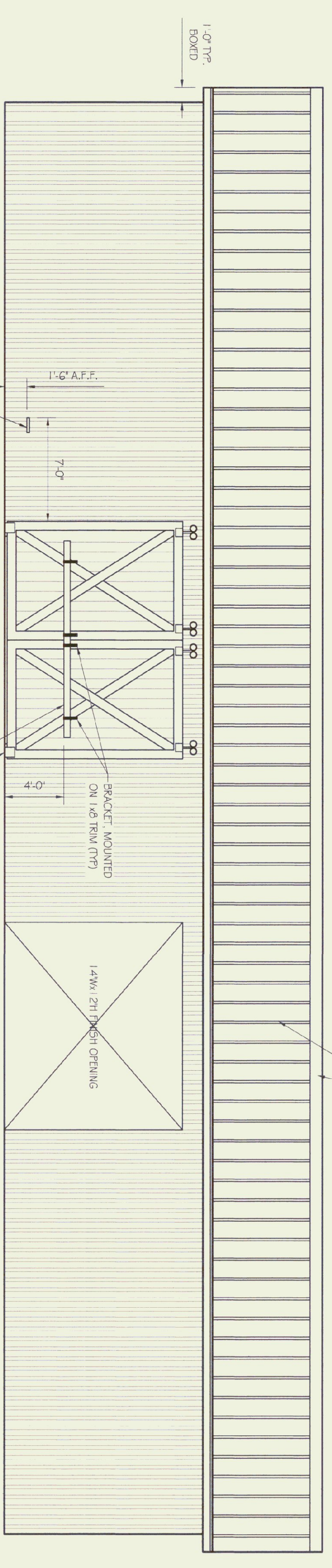
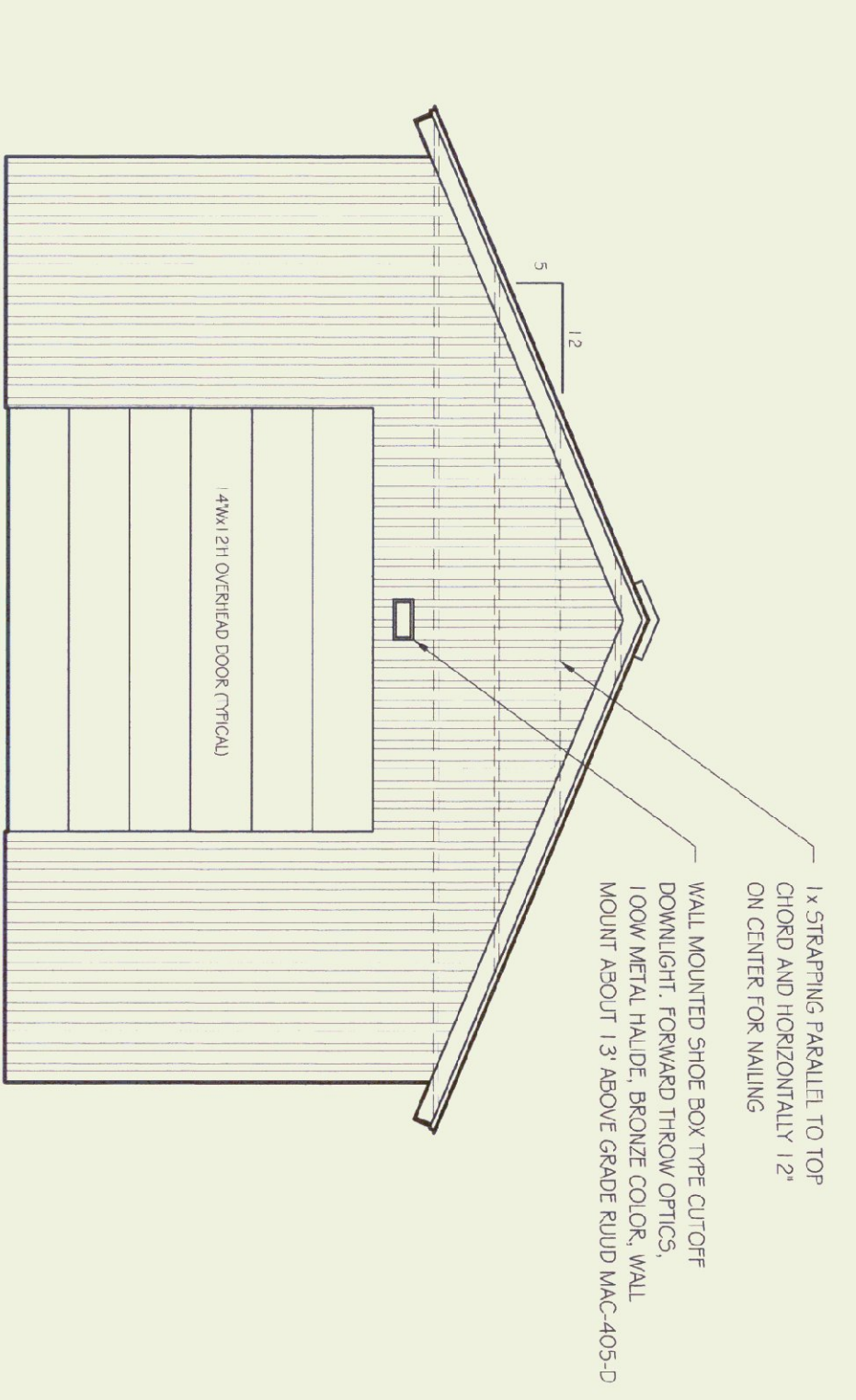


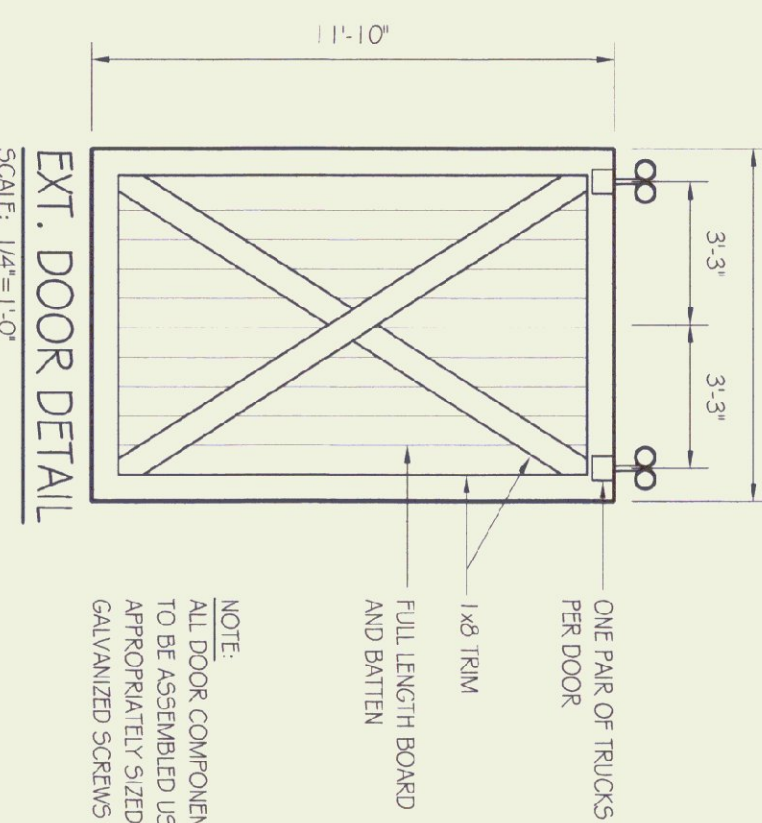
SHED PLAN
SCALE: 1/4"=1'-0"



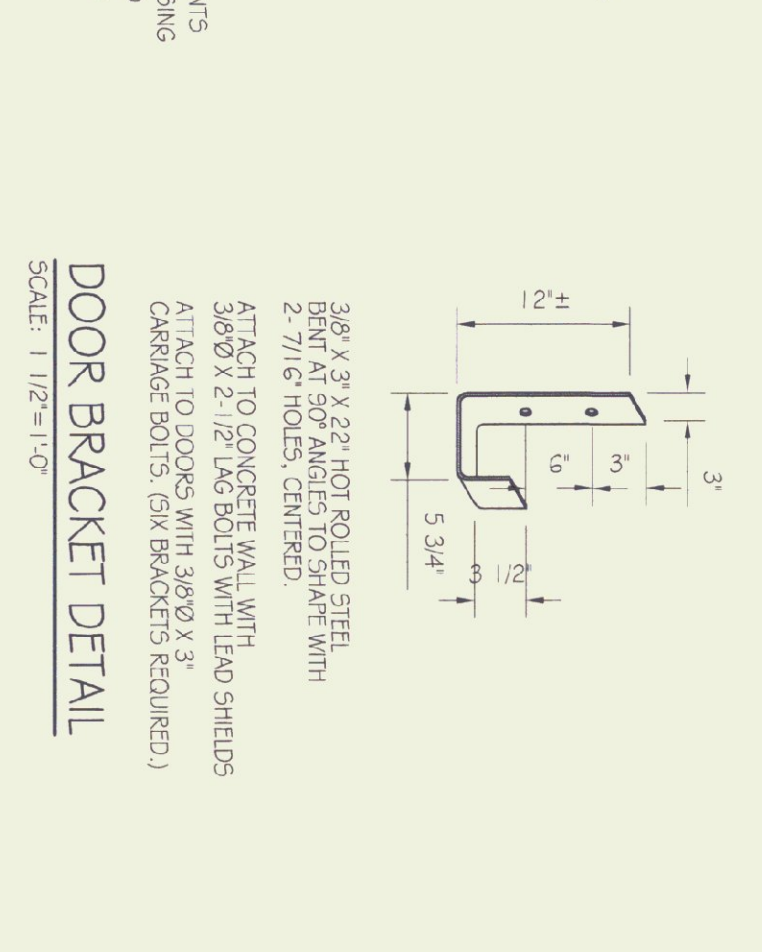
FRONT ELEVATION
SCALE: 3/16"=1'-0"



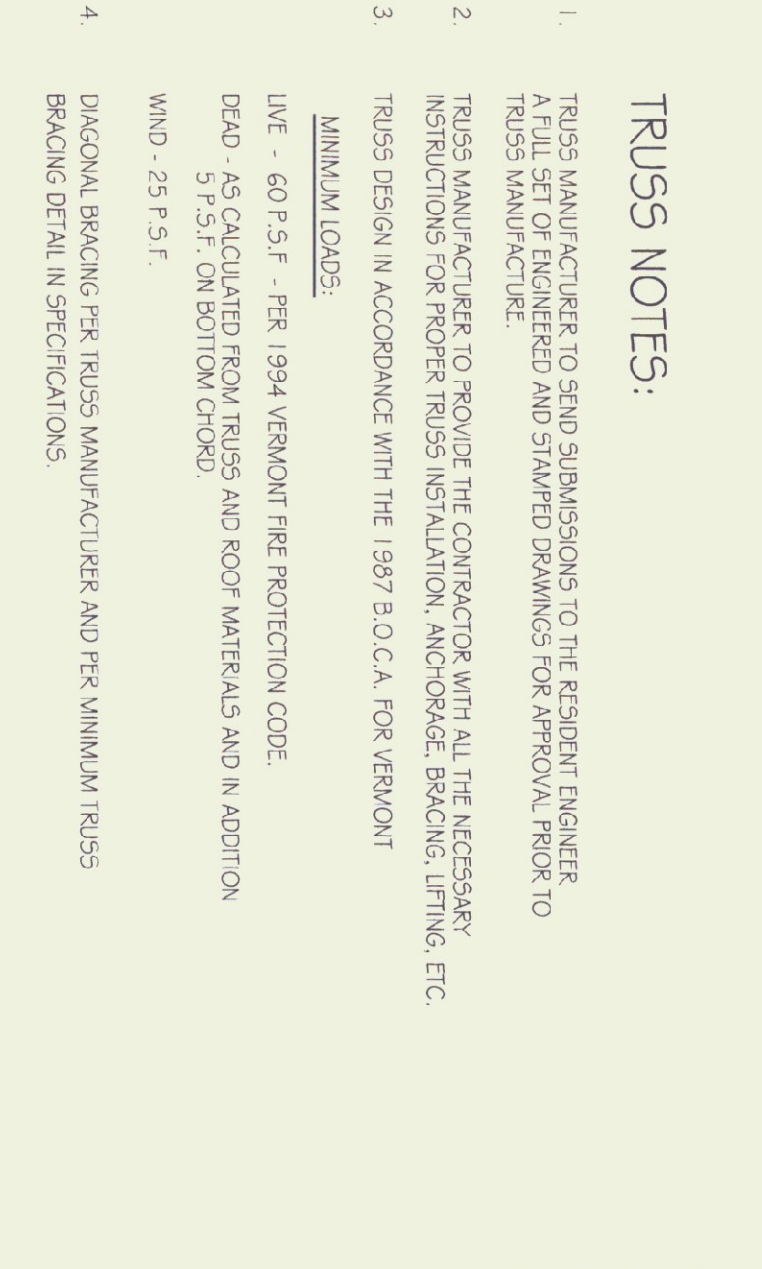
SIDE ELEVATION
SCALE: 1/4"=1'-0"



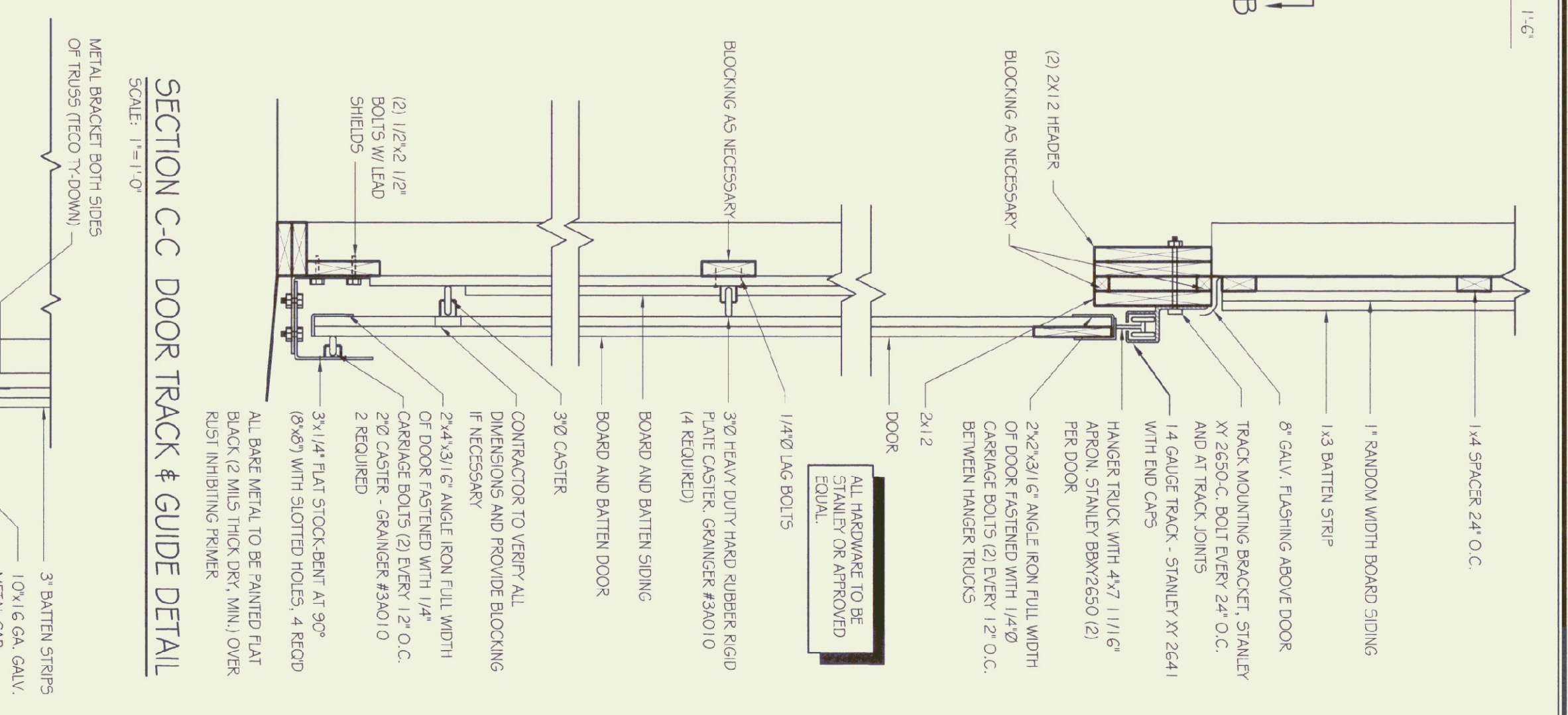
EXT. DOOR DETAIL
SCALE: 1/2"=1'-0"



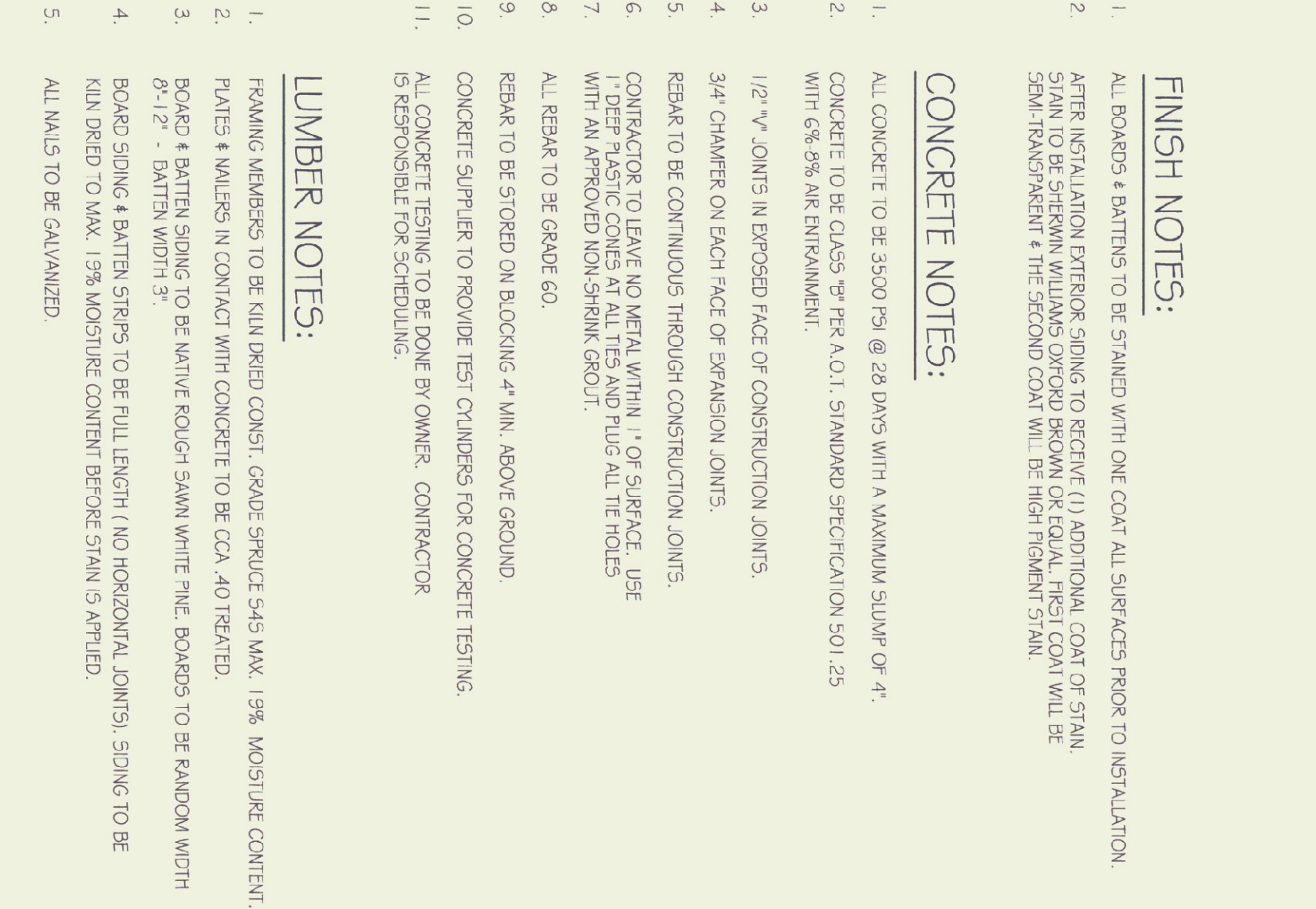
DOOR BRACKET DETAIL
SCALE: 1/2"=1'-0"



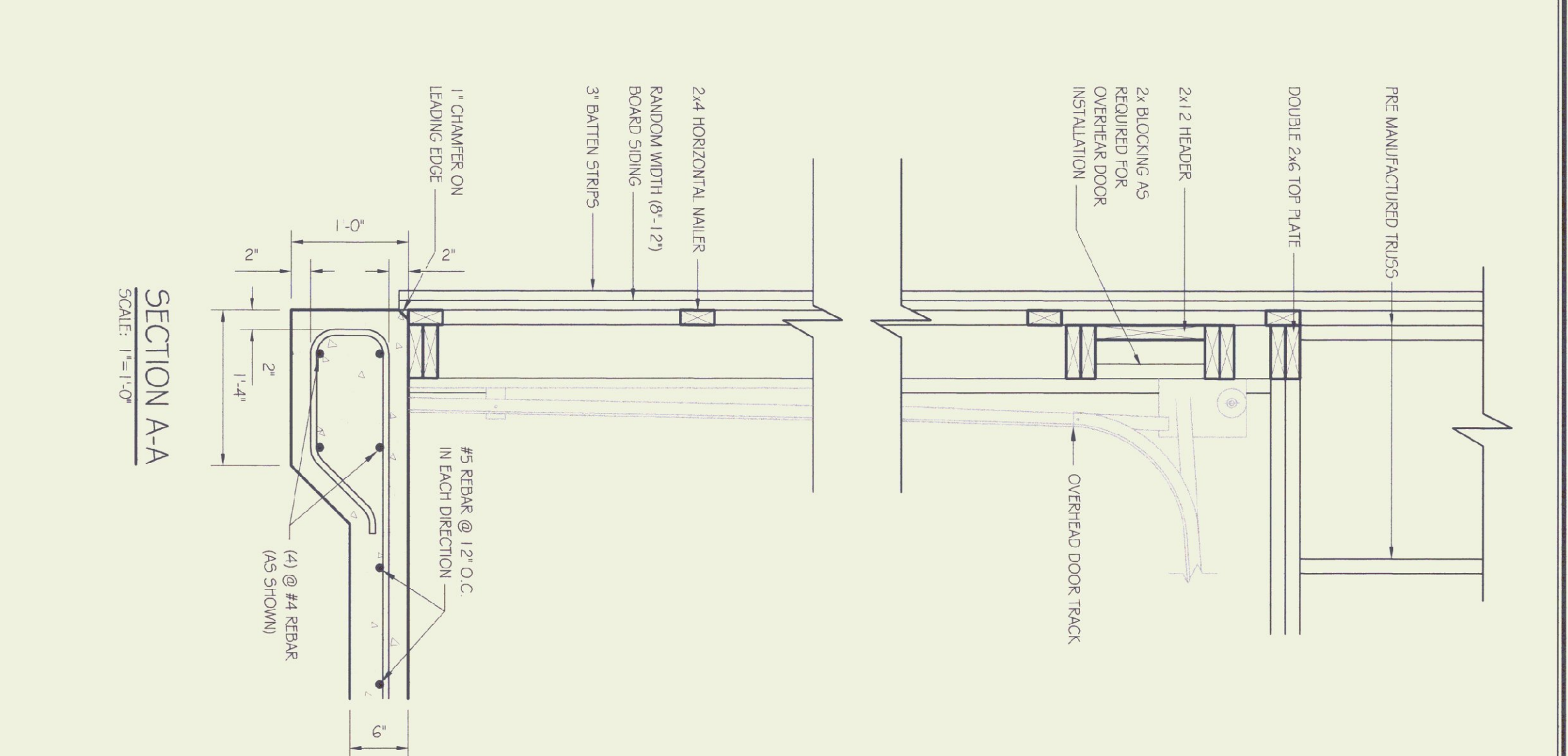
SECTION B-B SOFFIT DETAIL
SCALE: 1"=1'-0"



SECTION C-C DOOR TRACK & GUIDE DETAIL
SCALE: 1"=1'-0"



SECTION D-D HEADER
SCALE: 1"=1'-0"



SECTION A-A
SCALE: 1"=1'-0"

GENERAL NOTES:

1. ALL MATERIAL TO BE FINISHED BY CONTRACTOR.
2. ALL EXPOSED METAL EXCEPT GALVANIZED JOGGER ANGLES, DOOR GUIDES, BRACKETS ETC.) SHALL BE PAINTED FLAT BLACK (2 MILS THICK, DRY MIN) OVER RUST INHIBITING PRIMER.
3. ALL ELECTRICAL WORK SHALL COMPLY WITH N.E.C.
4. ALL FRAMING AND SOARD & BATTEN SIDING MATERIALS SHALL BE FASTENED USING APPROPRIATELY SIZED FASTENERS AND ACCORDING TO INDUSTRY STANDARDS.

TRUSS NOTES:

1. TRUSS MANUFACTURER TO SEND SUBMISSIONS TO THE RESIDENT ENGINEER.
2. ATTACH TO CONCRETE WALL WITH 3/8" X 3" X 2" GALVANIZED RODS WITH 2-7/16" HOLES, CENTERED.
3. TRUSS DESIGN IN ACCORDANCE WITH THE 1997 B.O.C.A. FOR VERMONT MINIMUM LOADS:
4. LIVE - 60 P.S.F. - PER 1994 VERMONT FIRE PROTECTION CODE.
5. DEAD - AS CALCULATED FROM TRUSSES AND ROOF MATERIALS AND IN ADDITION 5 P.S.F. ON FLOOR (GROUD).
6. WIND - 25 P.S.F.
7. DIAGONAL BRACING PER TRUSS MANUFACTURER AND PER MINIMUM TRUSSES BRACING DETAIL IN SPECIFICATIONS.

FINISH NOTES:

1. ALL BOARDS & BATTENS TO BE STAINED WITH ONE COAT. ALL SURFACES PRIOR TO INSTALLATION.
2. AFTER INSTALLATION EXTERIOR SIDING TO RECEIVE (1) ADDITIONAL COAT OF STAIN STAIN TO BE SHERWIN WILLIAMS OYDOR BROWN OR EQUAL, FIRST COAT WILL BE SEMI-TRANSPARENT & THE SECOND COAT WILL BE HIGH TRIGGER STAIN.

CONCRETE NOTES:

1. ALL CONCRETE TO BE 3500 PSI @ 28 DAYS WITH A MAXIMUM SLUMP OF 4".
2. CONCRETE TO BE CLASS 75 PER A.O.T. STANDARD SPECIFICATION 501.25 WITH 6% 95% AIR ENTRAINMENT.
3. 1/2" W/ JOINTS IN EXPOSED FACE OF CONSTRUCTION JOINTS.
4. CHAMFER ON EACH FACE OF EXPANSION JOINTS.
5. REBAR TO BE CONTINUOUS THROUGH CONSTRUCTION JOINTS.
6. CONTRACTOR TO LEAVE NO METAL WITHIN 1" OF SURFACE. USE 1" DEEP PLASTIC CONES AT ALL TIES AND PLUG ALL THE HOLES WITH AN APPROVED NON-SINK SMOUL.
7. ALL REBAR TO BE GRADE 60.
8. REBAR TO BE STORED ON BLOCKING 4" MIN. ABOVE GROUND.
9. CONCRETE SUPPLIER TO PROVIDE TEST CYLINDERS FOR CONCRETE TESTING.
10. ALL CONCRETE TESTING TO BE DONE BY OWNER, CONTRACTOR IS RESPONSIBLE FOR SCHEDULING.

LUMBER NOTES:

1. FRAMING MEMBERS TO BE KILN DRIED CONST. GRADE SPRUCE-54S MAX. 19% MOISTURE CONTENT.
2. PLATES & WALLERS IN CONTACT WITH CONCRETE TO BE CCA 40 TREATED.
3. BOARD & BATTEN SIDING TO BE NATIVE ROUGH SAWN WHITE PINE. BOARDS TO BE RANDOM WIDTH 6"-12". BATTEN WIDTH 3".
4. BOARD SIDING & BATTEN STRIPS TO BE FULL LENGTH, NO HORIZONTAL JOINTS. SIDING TO BE KILN DRIED TO MAX. 19% MOISTURE CONTENT BEFORE STAIN IS APPLIED.
5. ALL NAILS TO BE GALVANIZED.

SCALE:	AS NOTED
DATE:	4/2003
DRAWN BY:	T. DREW
APPR. BY:	R. BARRY

REVISIONS	DATE	DESCRIPTION

A.O.T. NEW SALT AND STORAGE SHEDS
96'X30'
SCALE: 1/4"=1'-0"

PLAN, ELEVATIONS AND DETAILS

3 OF 3

A.O.T. - NEW SALT AND STORAGE SHEDS
96'X30' STORAGE SHED
PLAN, ELEVATIONS AND DETAILS



STATE OF VERMONT
Department of Buildings and General Services
Agency of Administration
Montpelier, Vermont

