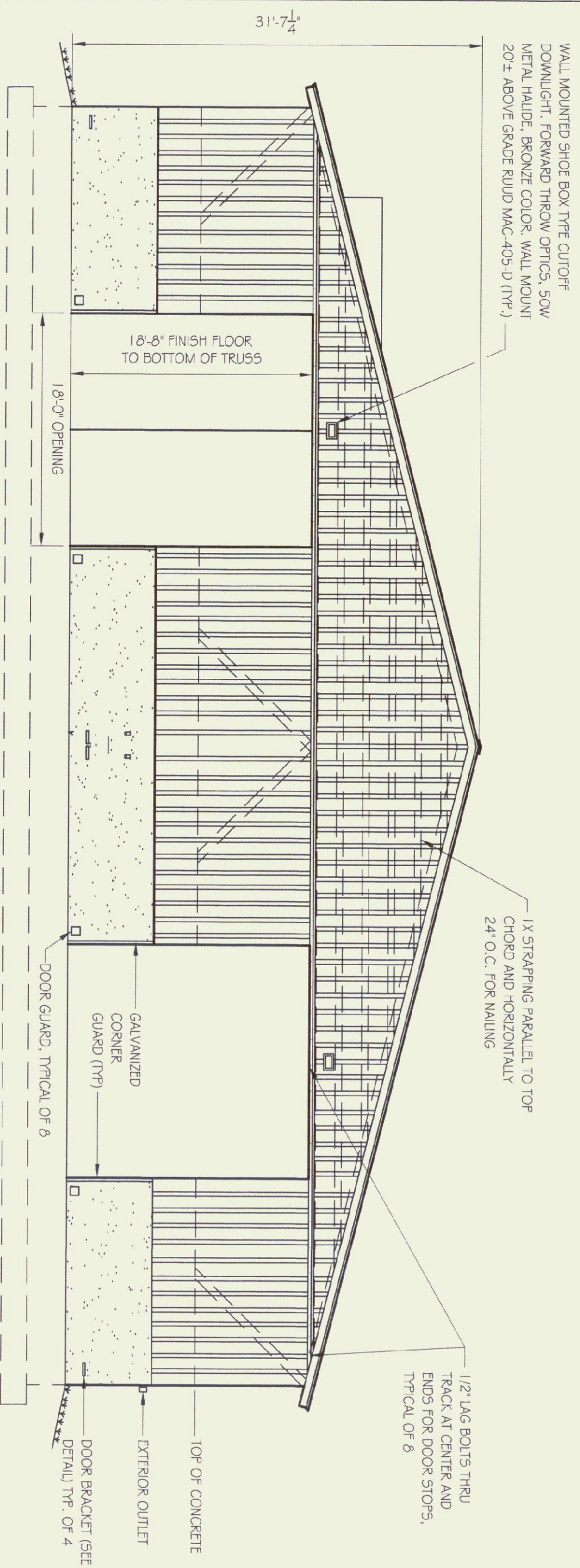


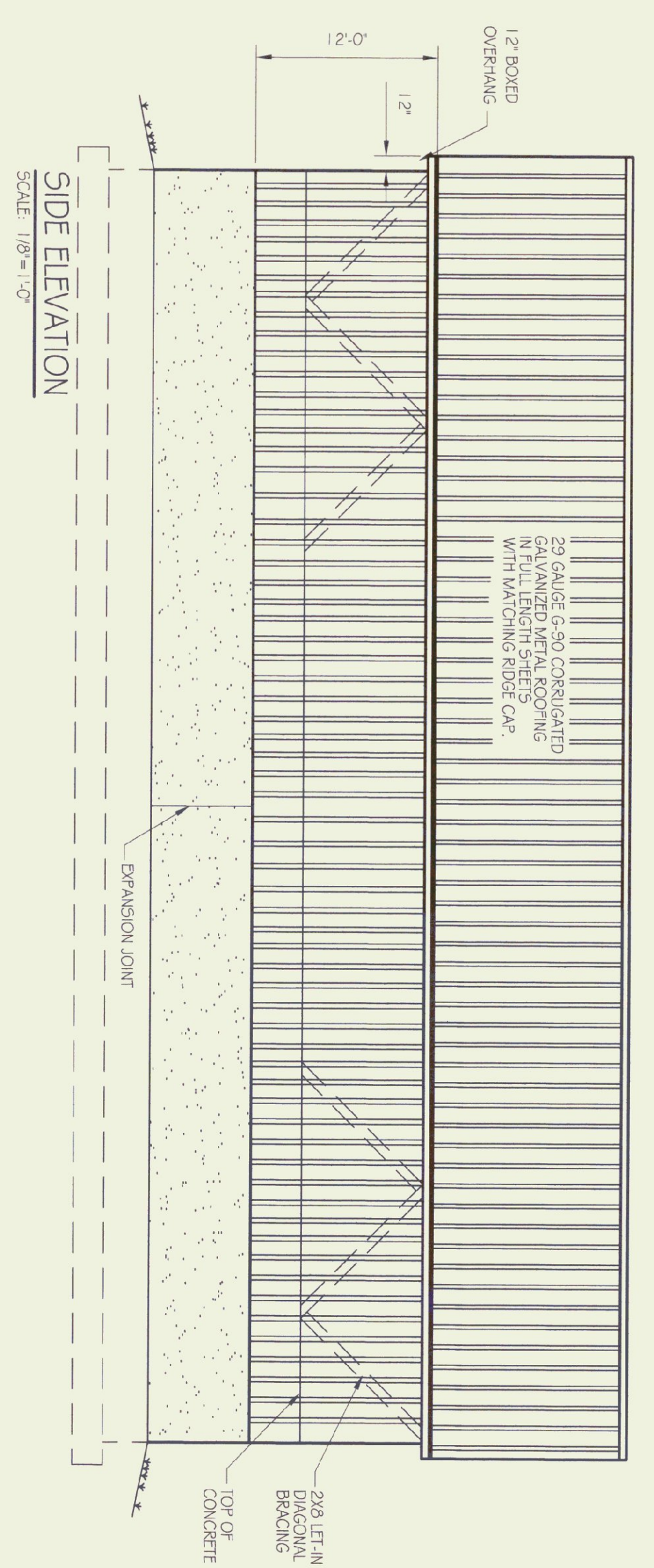
FOUNDATION PLAN
SCALE: 1/8"=1'-0"

SANDSALT CAPACITY:
—'—'—'
—'—'—'
—'—'—'

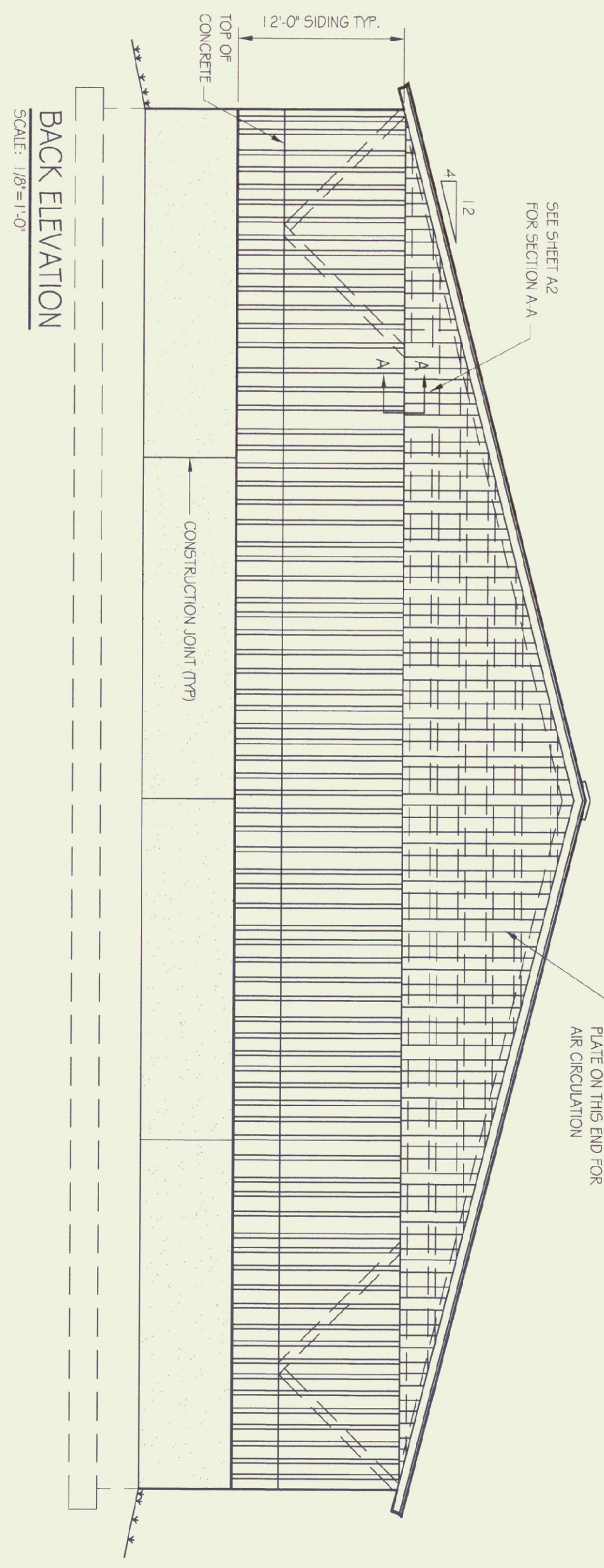


FRONT ELEVATION
SCALE: 1/8"=1'-0"

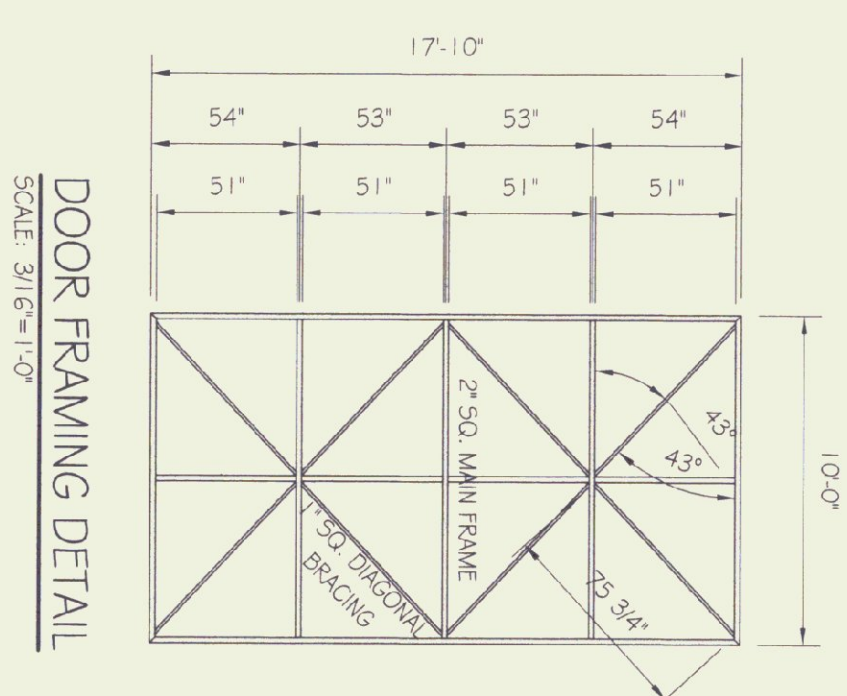
NOTE:
ALL ELECTRICAL CONDUIT BELOW GRADE AND ON THE EXTERIOR OF THE BUILDING SHALL BE 1" RIGID METAL CONDUIT. CONDUIT INSIDE THE BUILDING SHALL BE 3/4" SCH. 40 PVC.



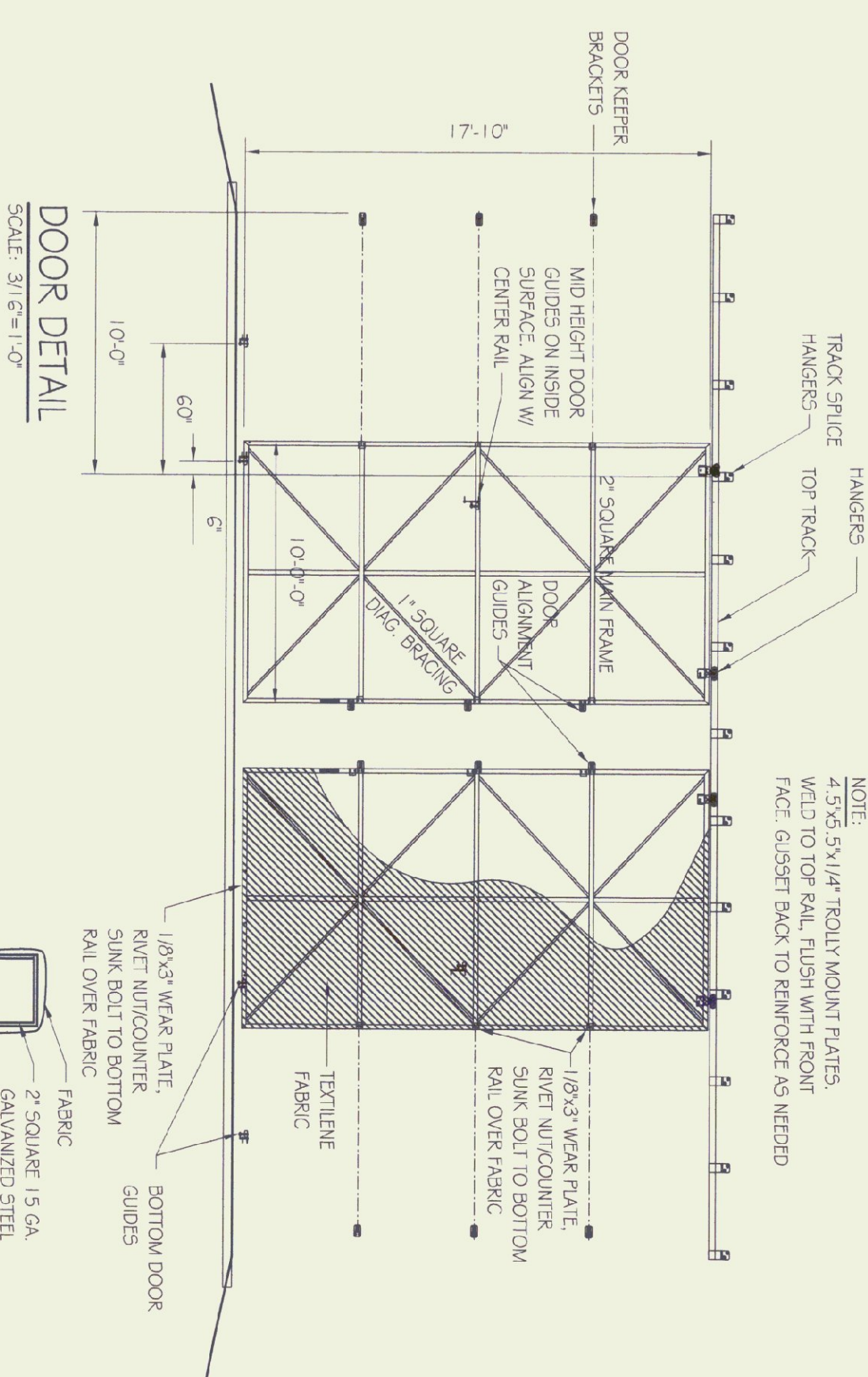
SIDE ELEVATION
SCALE: 1/8"=1'-0"



BACK ELEVATION
SCALE: 1/8"=1'-0"



DOOR FRAMING DETAIL
SCALE: 3/16"=1'-0"



DOOR DETAIL
SCALE: 3/16"=1'-0"

GENERAL INFORMATION:
FRAME: 2" SQUARE GALV. STEEL CATHEAD
FULLY WELDED
FABRIC: TEXTILE VINYL
FABRIC/FRAME ATTACHMENT: WRAP AND TEK HANGING HARDWARE OVERHEAD TRACK AND HANGERS
DOOR TRACK AND GUIDE DETAILS BY DOOR MANUFACTURER.



NOTE:
SEE SHEET A3 (3 OF 3) FOR GENERAL NOTES, TRUSS NOTES, FINISH NOTES, CONCRETE NOTES AND LUMBER NOTES.