

NEW FLOOR PLAN
1/4" = 1'-0"

LEGEND	
	SWITCH
	DUAL DUPLEX OUTLET
	DUPLEX OUTLET
	PHONE JACK
	QUAD PHONE JACK
	THERMOSTAT
	2x4 RECESSED FLUORESCENT FIXTURE
	2x2 SURFACE MOUNTED FLUORESCENT FIXTURE
	1x4 SURFACE MOUNTED FLUORESCENT FIXTURE

- NOTES:
1. MOVE (2) NETWORK LINES FROM COMPUTER ROOM TO DALES OLD OFFICE/COLEN & EXISTING CLERICAL AREA.
 2. MOVE 4340 TO COMPUTER ROOM, FAX (3337) TO DALES OLD OFFICE & 4346 TO CONFERENCE ROOM.
 3. INSTALL (4) NEW NETWORK DROPS AND PHONE LINES IN NEW TECH/GS OFFICE
 4. RAS SERVER PHONE LINES:
 - 334-3940
 - 334-3941
 - 334-3942
 - 334-3943
 - 334-3945
 - 334-3946
 - 334-3947
 - 334-3948

SCALE: 1/4" = 1'-0"
DATE: AUGUST 2001
DRAWN BY: L. MANN
APPR. BY:

REVISIONS
6/03/02 LEM

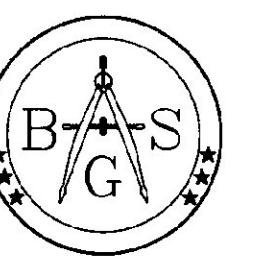
DERBY

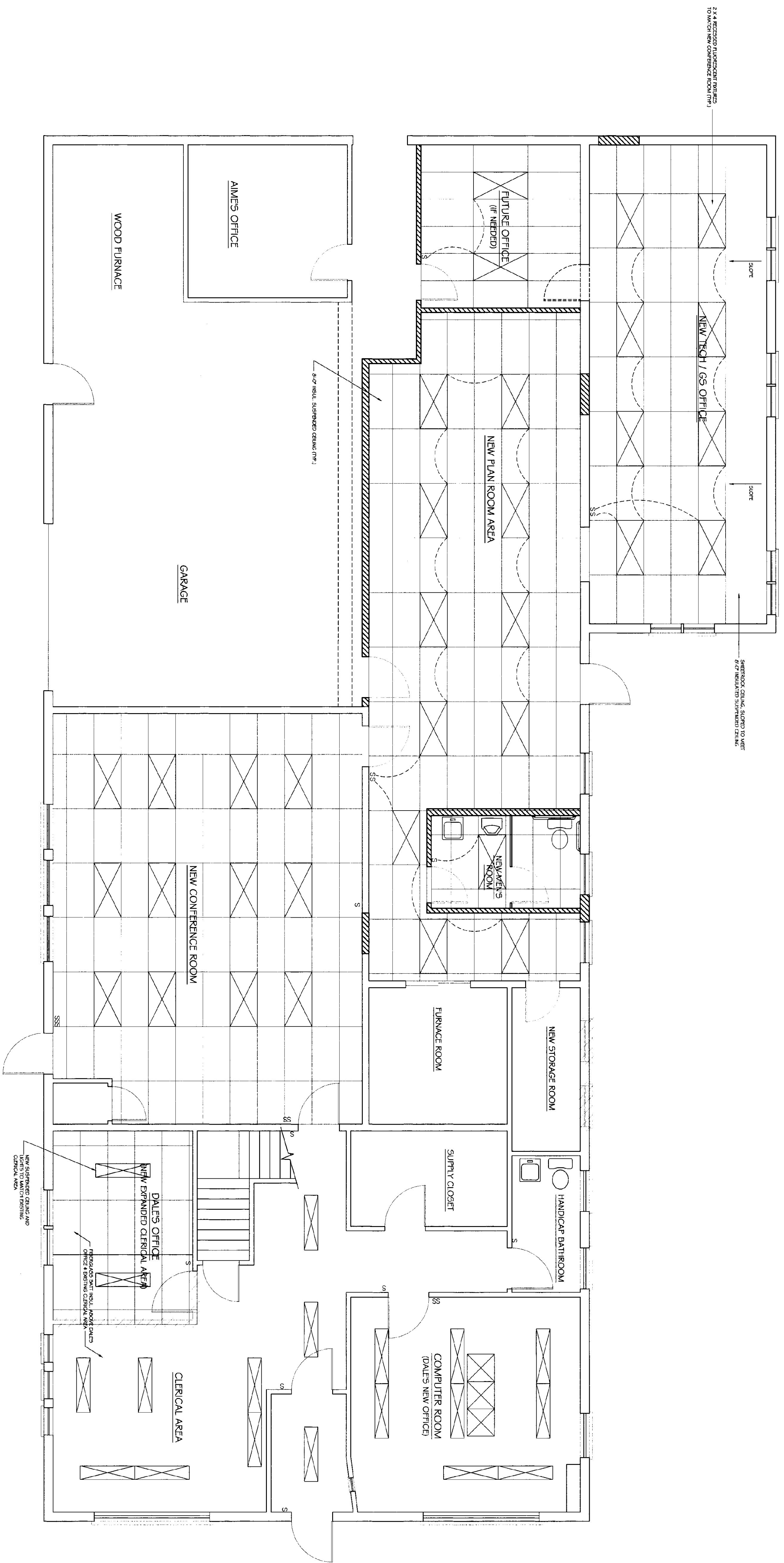
DERBY
AOT BUILDING RENOVATION
NEW FLOOR PLAN

VERMONT



STATE OF VERMONT
Department of Buildings
and General Services
Agency of Administration
Montpelier, Vermont





REFLECTED CEILING PLAN
1/4" = 1'-0"

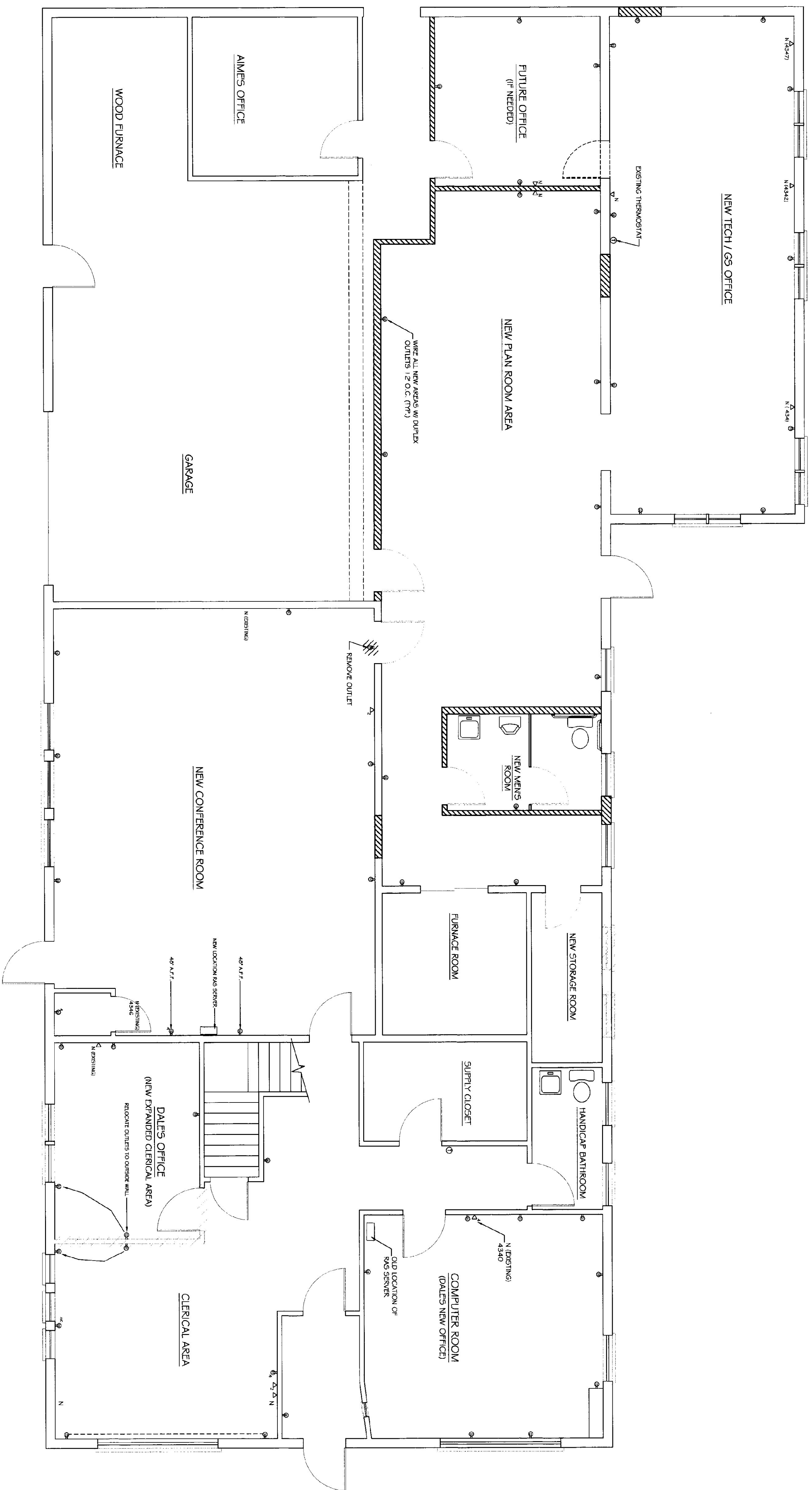
A-2 2 OF 3	DERBY	SCALE: 1/4" = 1'-0"	REVISIONS
	AOT BUILDING RENOVATION	DATE: AUGUST 2001	6/03/02 LEM
	REFLECTED CEILING PLAN	DRAWN BY: L. MANN	
		APPR. BY:	

DERBY
AOT BUILDING RENOVATION
REFLECTED CEILING PLAN




STATE OF VERMONT
Department of Buildings
and General Services
Agency of Administration
Montpelier, Vermont

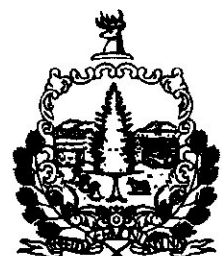




ELECTRICAL, PHONE & DATA LAYOUT
 1/4" = 1'-0"

A-3 3 OF 3	DERBY AOT BUILDING RENOVATION	SCALE: 1/4" - 1'-0" DATE: AUGUST 2001 DRAWN BY: L. MANN APPR. BY:	REVISIONS 6/03/02 LEM
	DERBY AOT BUILDING RENOVATION ELECTRICAL, PHONE & DATA LAYOUT		DERBY
	STATE OF VERMONT Department of Buildings and General Services Agency of Administration Montpelier, Vermont		
	DERBY AOT BUILDING RENOVATION ELECTRICAL, PHONE & DATA LAYOUT		VERMONT

DERBY
AOT BUILDING RENOVATION
ELECTRICAL, PHONE & DATA LAYOUT



STATE OF VERMONT
 Department of Buildings
 and General Services
 Agency of Administration
 Montpelier, Vermont

