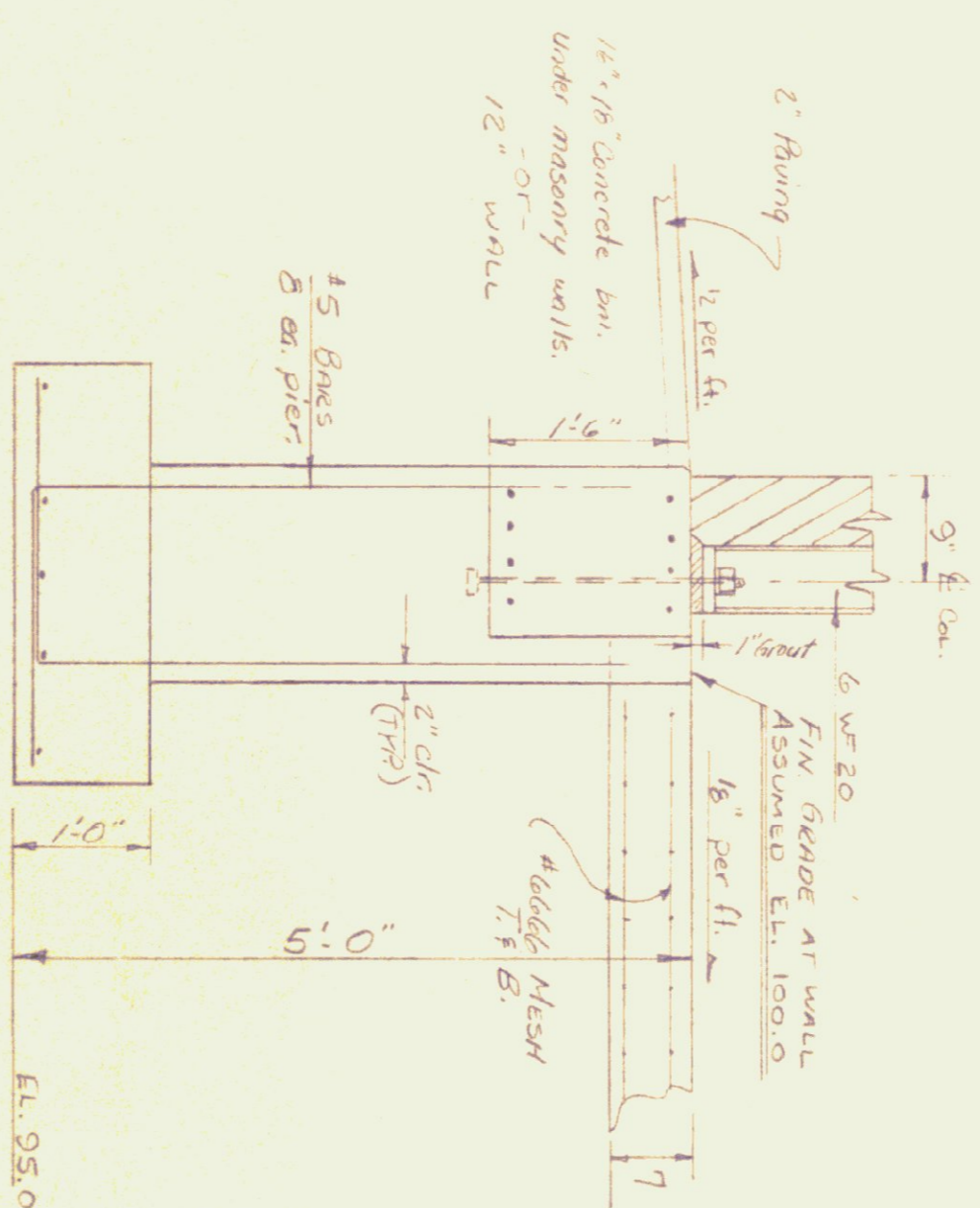


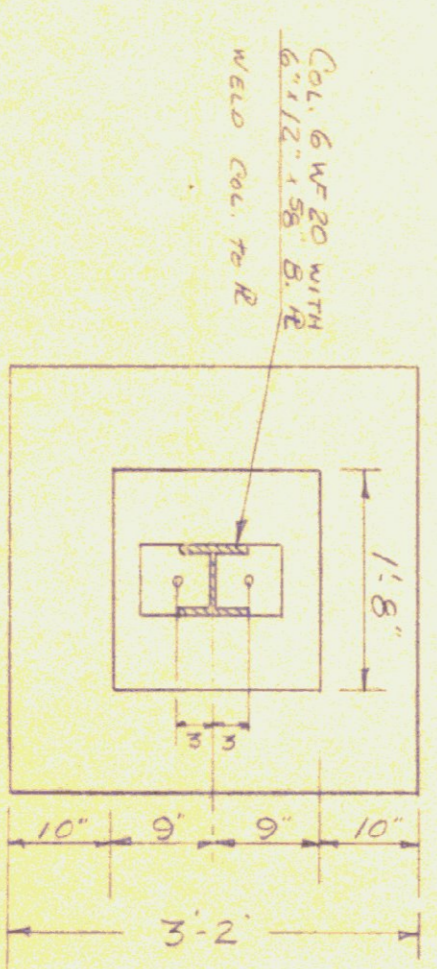


— REAR ELEVATION —

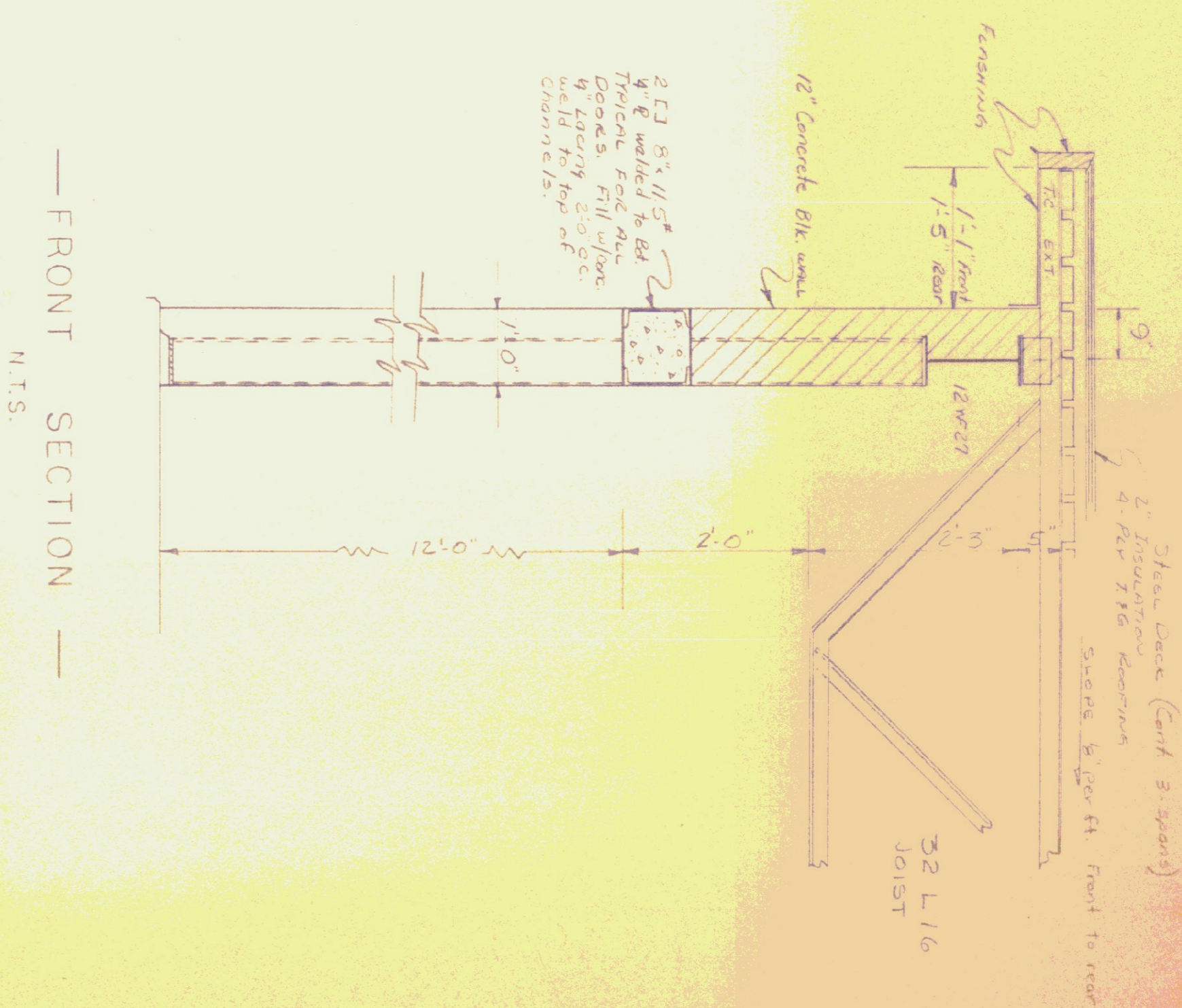
— FRONT ELEVATION —



— PEDISTAL DETAIL —



— FOOTING DETAIL —



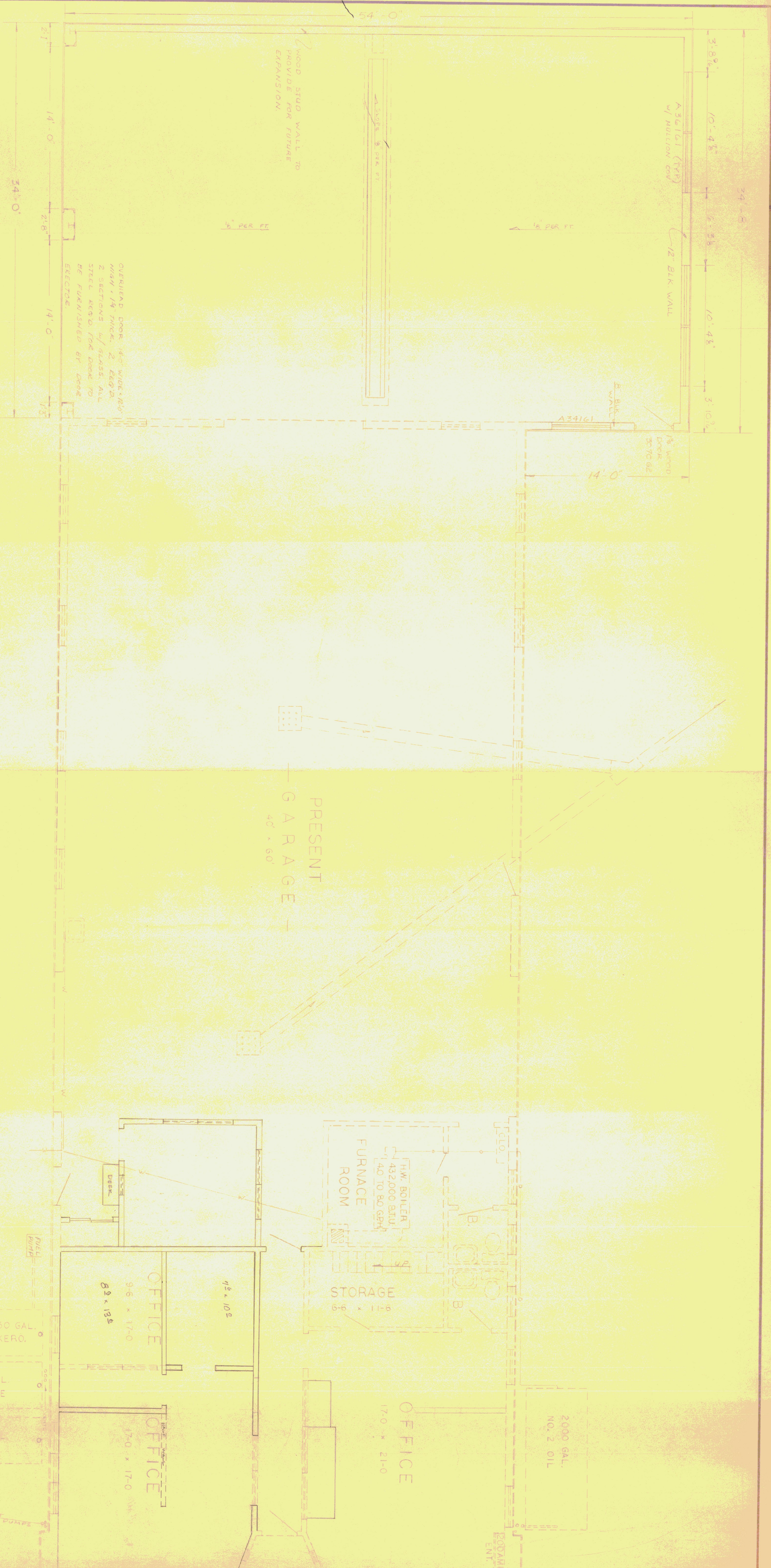
— FRONT SECTION —
N.T.S.

STATE OF VERMONT
DEPT OF HIGHWAYS
DISTRICT "9"
PROPOSED GARAGE ADDITION
F. P. ROUND DIST. ENGR.
J. A. BASSETT, AIDE.

PROPOSED ADDITION

EXISTING FACILITIES

PLAN
SCALE 1/8" = 1'-0"



STATE OF VERMONT
 DEPT OF HIGHWAYS
 DISTRICT # 9
 PROPOSED GARAGE ADDITION
 E.P. ROUND, DIST. ENGR.
 174 SASSSETT AVE