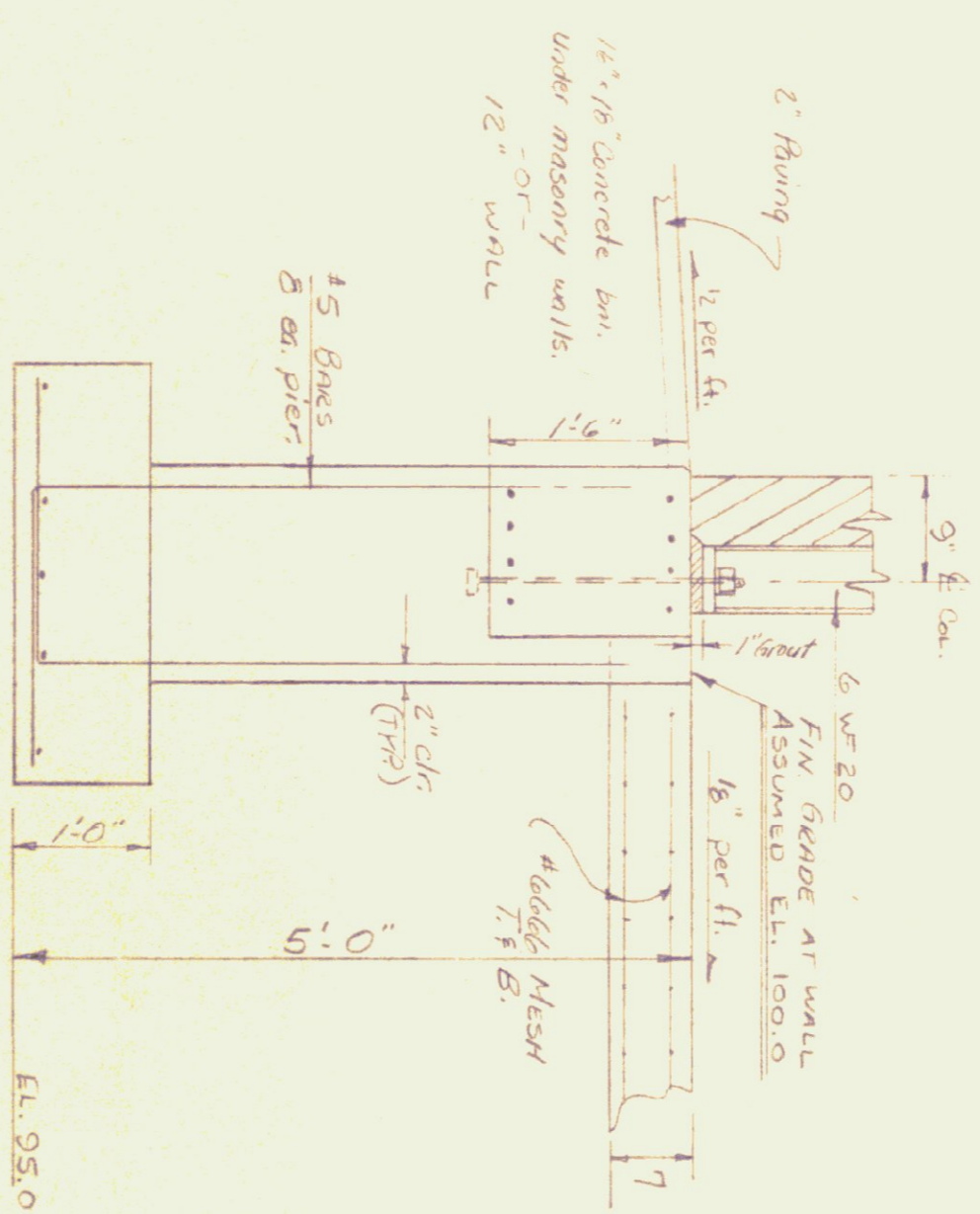


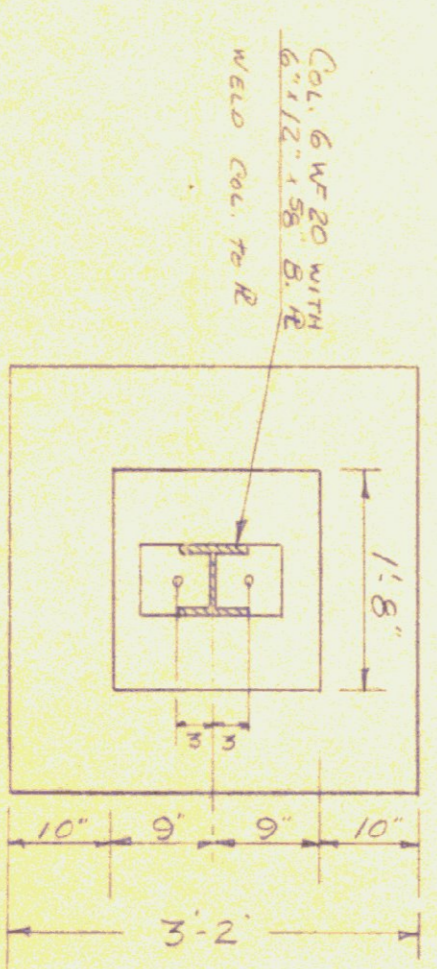


— REAR ELEVATION —

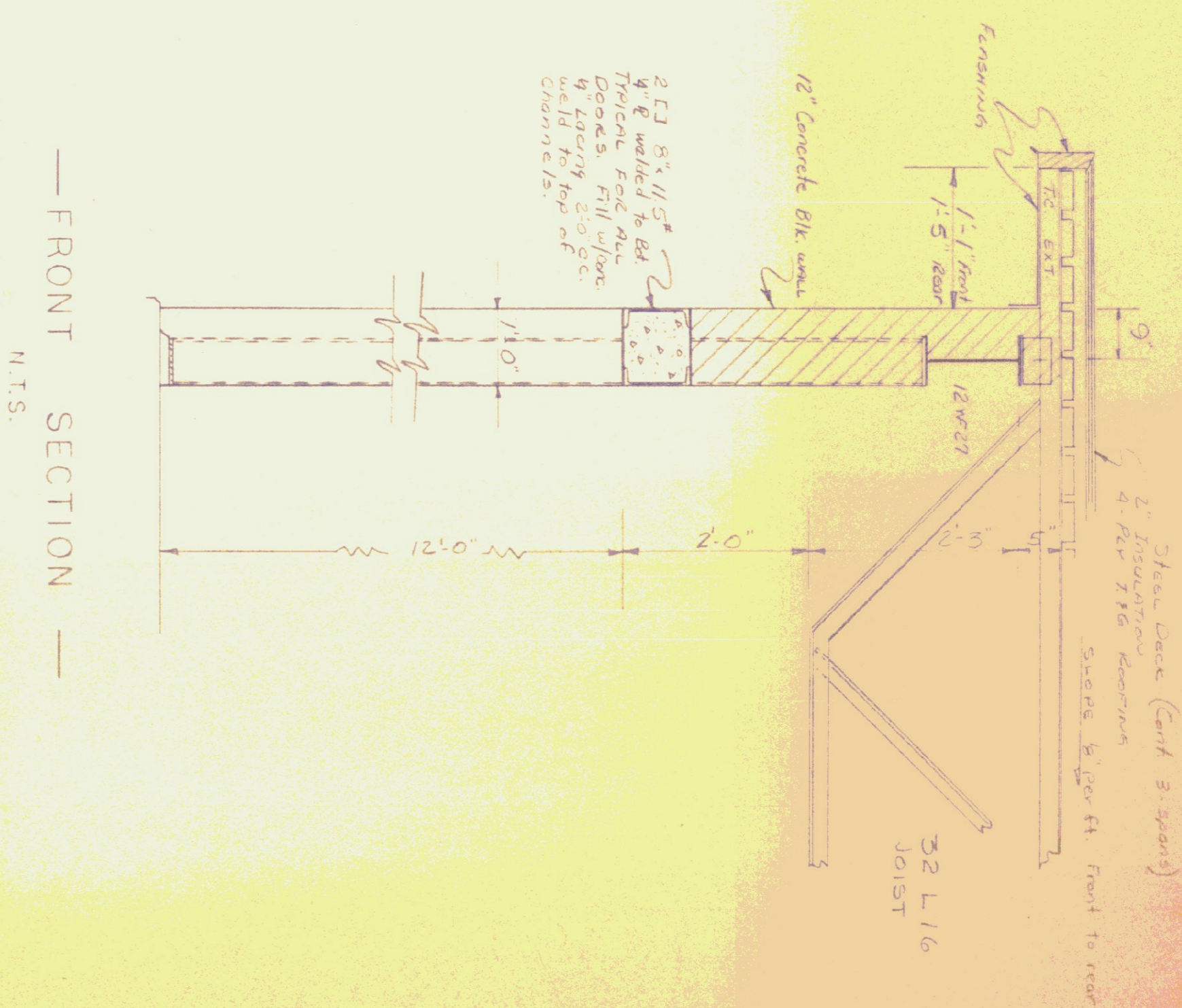
— FRONT ELEVATION —



— PEDISTAL DETAIL —



— FOOTING DETAIL —



— FRONT SECTION —
N.T.S.

STATE OF VERMONT
DEPT OF HIGHWAYS
DISTRICT "9"
PROPOSED GARAGE ADDITION
F. P. ROUND, DIST. ENGR.
J. A. BASSETT, AIDE.