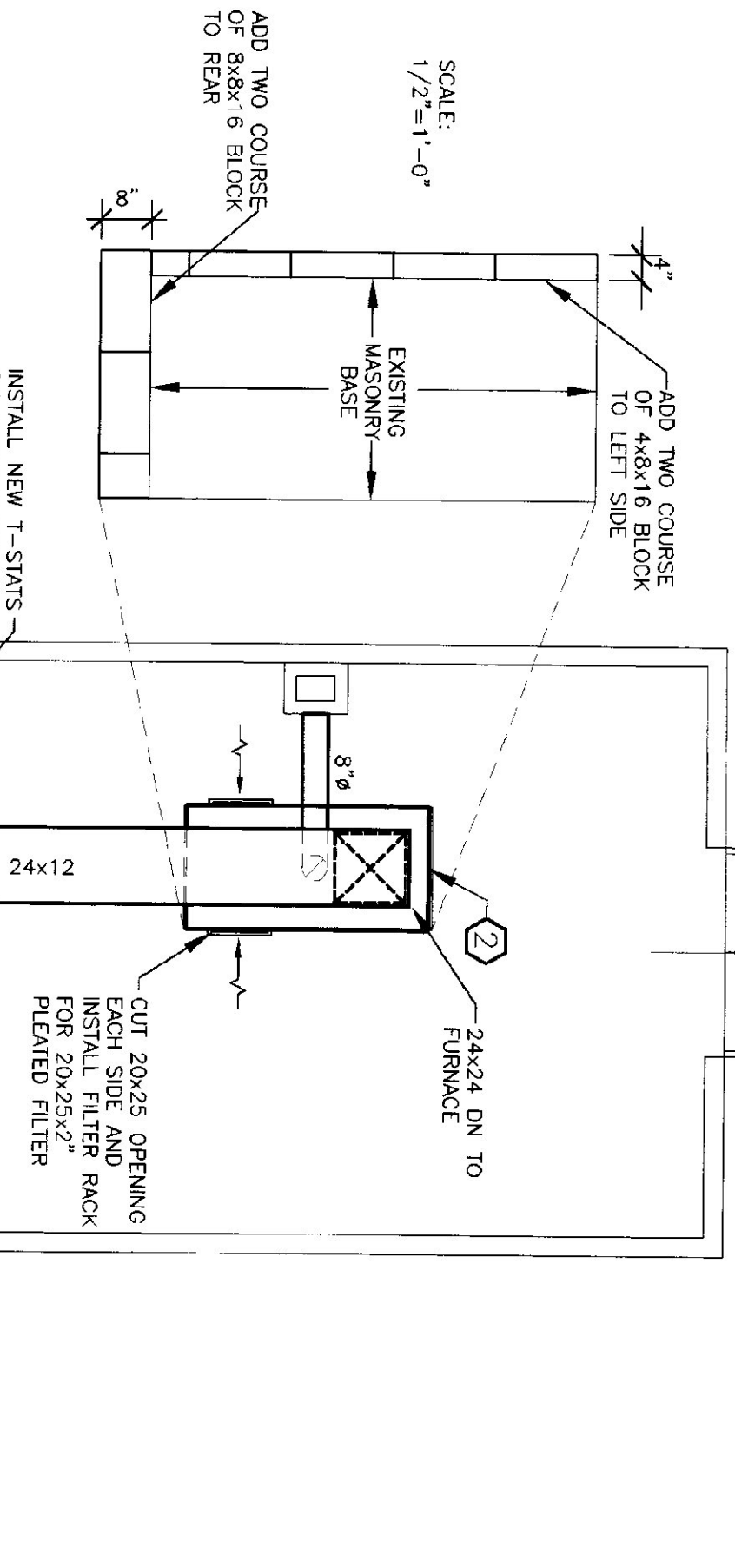
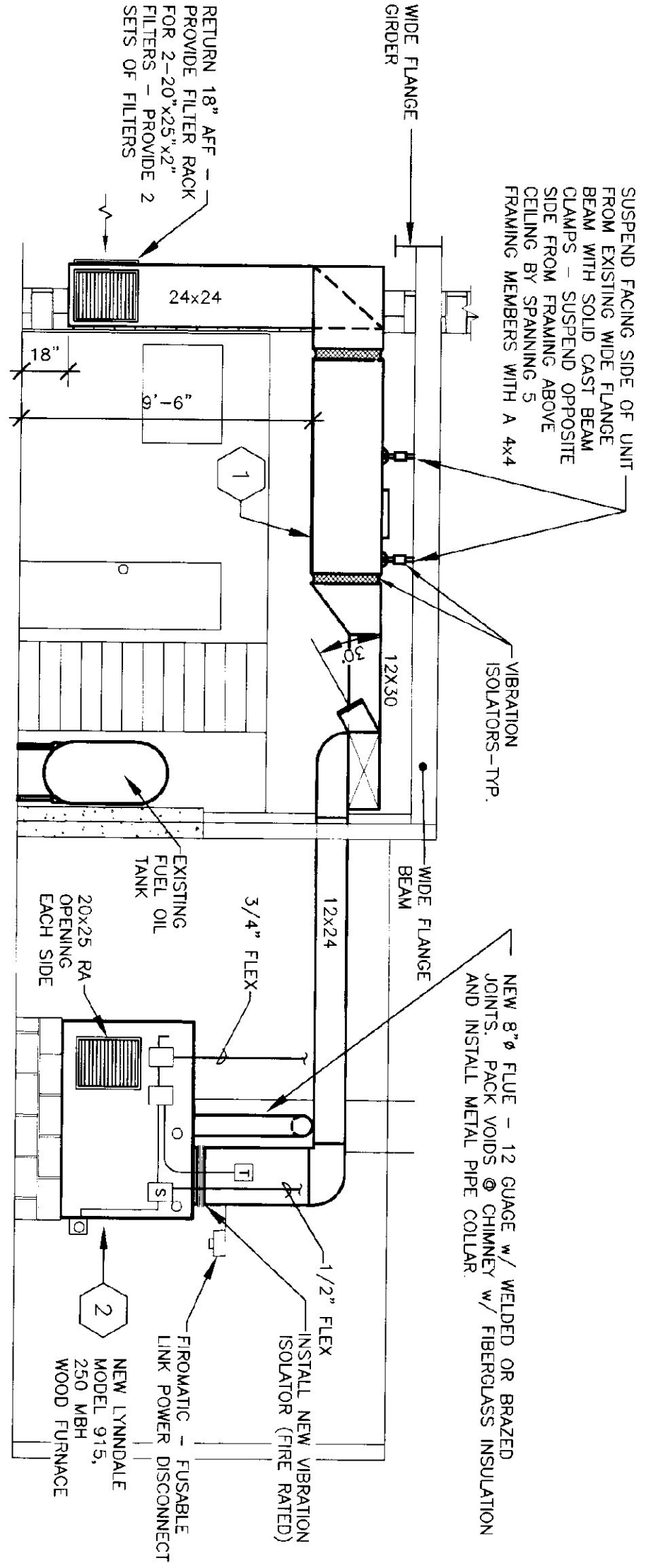


- MASONRY NOTES:**
- ON ALL SURFACES TO BOND TO NEW MASONRY - REMOVE PAINT FROM EXISTING BRICK AND WASHING BOND.
 - ALLOW MORTAR TO SET 4 DAYS BEFORE LOADING.
 - AS AN ALTERNATE TO CONTRACTOR MAY ELECT TO USE CAST IN PLACE CONCRETE IN LIFT BLOCKS IN SAME SURFACE PREP AND SETTING TIME NOTES APPL.

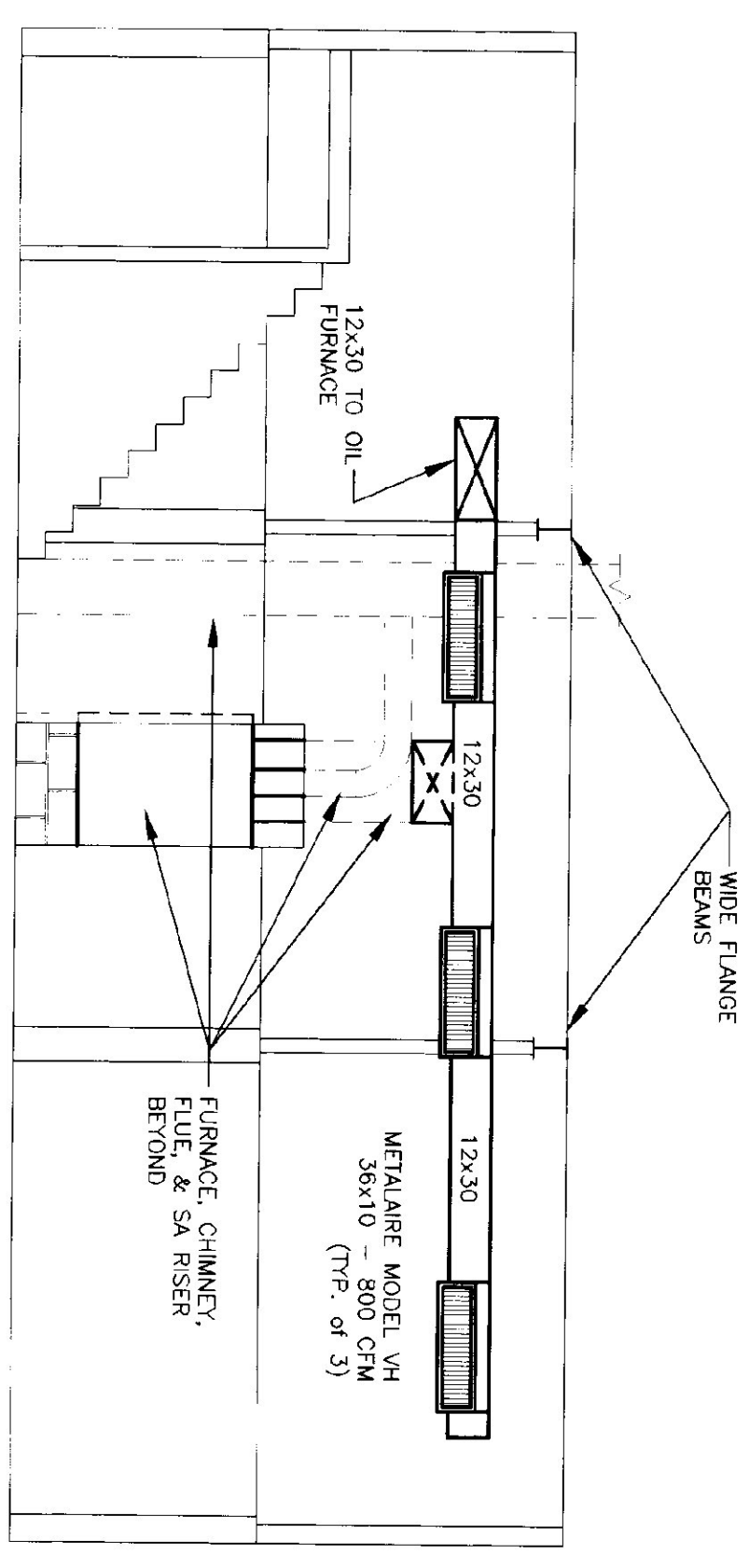
ACCESS TO ATTIC SPACE MAY BE MADE BY REMOVING A PIECE OF THE GYPSUM BOARD ABOVE. PATCH THE HOLE TO MATCH THE EXISTING OR TRIM THE OPENING WITH 1x6 POPLAR AND TRIM THE BOTTOM EDGES OF INSULATION AND GYPSUM BOARD TO MATCH THE EXISTING. THE OPENING PRESENTS A NEAT AND FINISHED APPEARANCE. THE OPENING SHALL BE LOCATED IN THE FIELD BY THE ENGINEER AND THE CONTRACTOR.



FLOOR PLAN
1/4" = 1'-0"



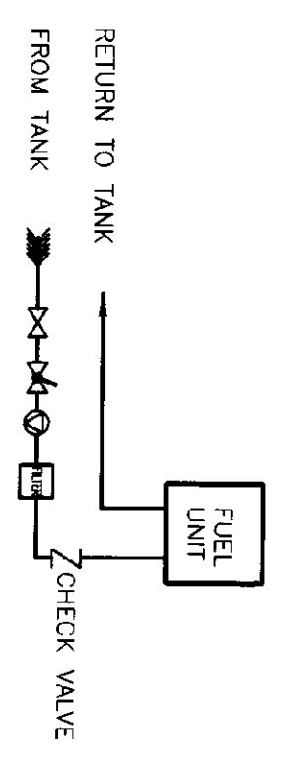
SECTION 1
1/4" = 1'-0"



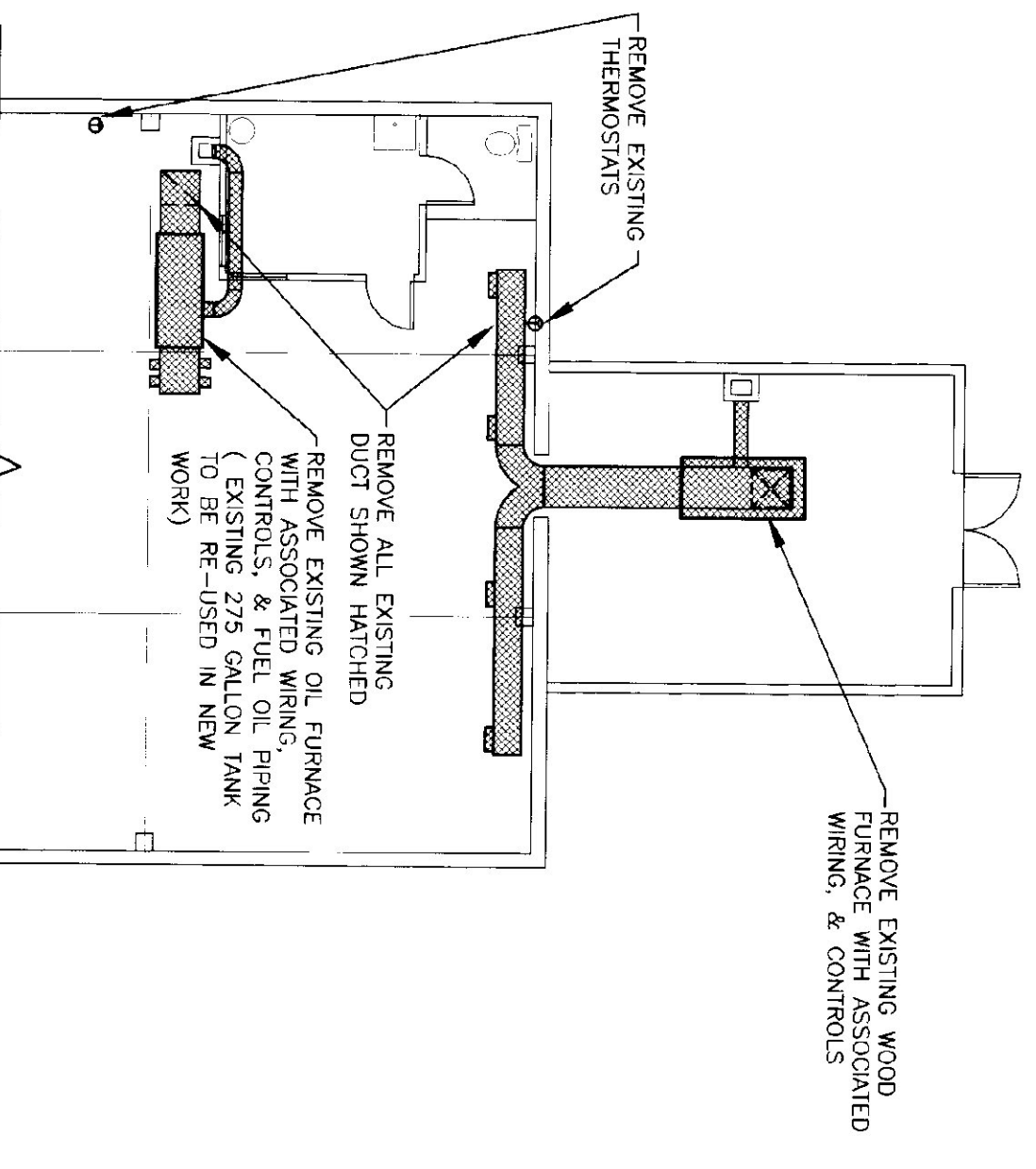
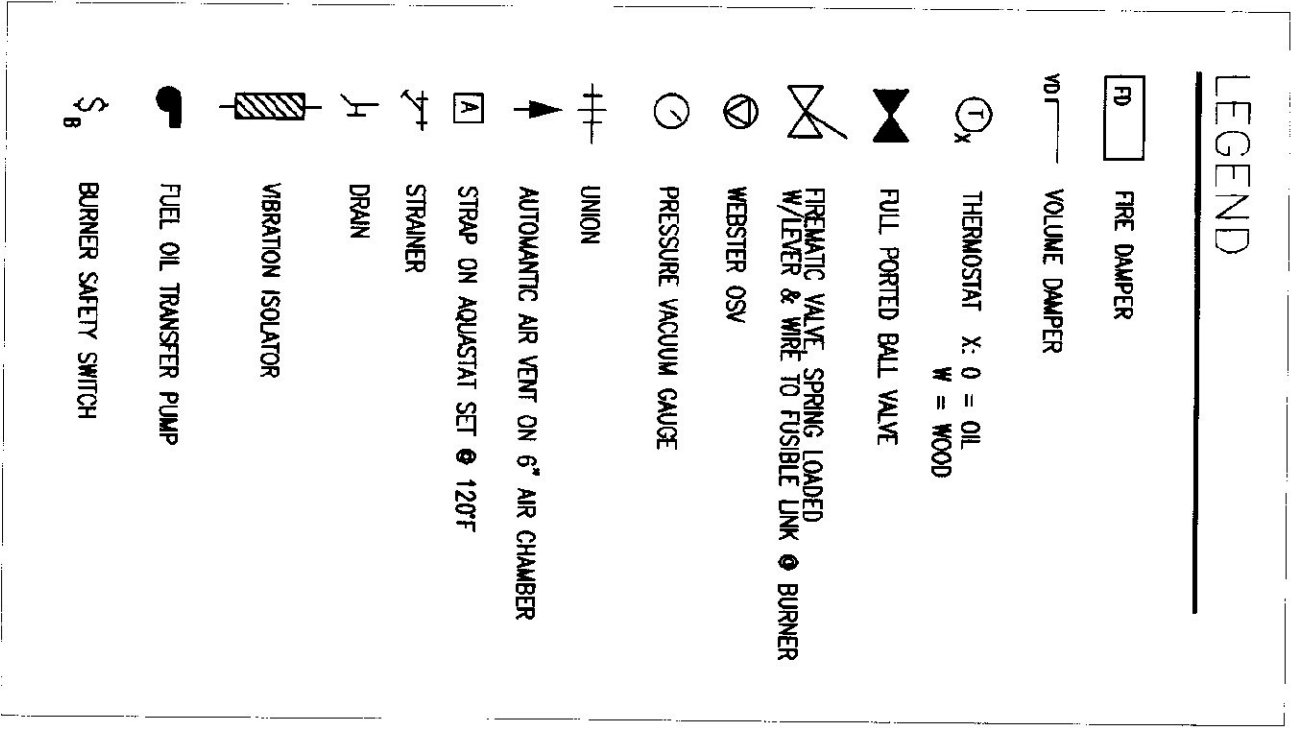
SECTION 2
1/4" = 1'-0"

FURNACE SCHEDULE

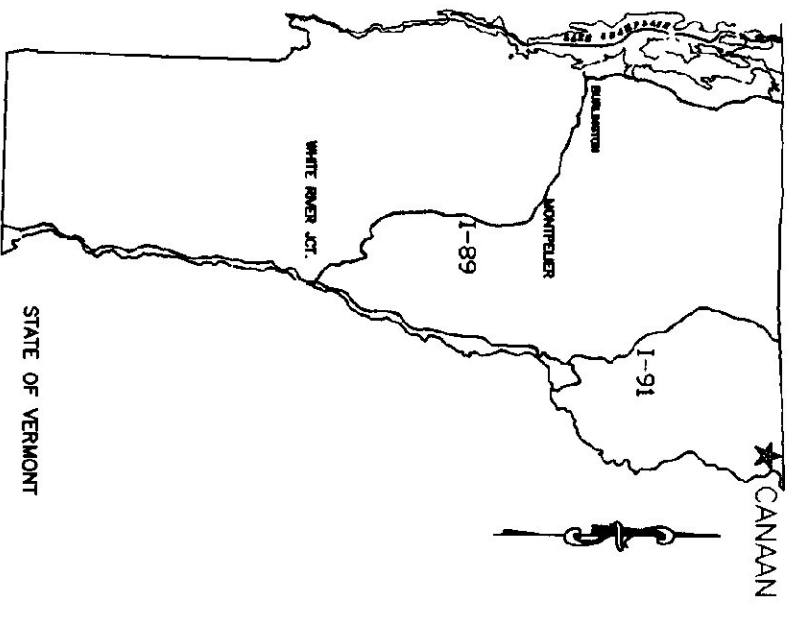
MAKE / MODEL	RTU OUTPUT	FUEL	CFM	BLOWER HP	VOLTAGE	FLUE
JACKSON - CHURCH 280-23	224,000	# 2 OIL	2440	3/4	115	9"ø
LYNNDALE - MODEL 915	250,000	CHUNK WOOD 2000	3/4	115	8"ø	



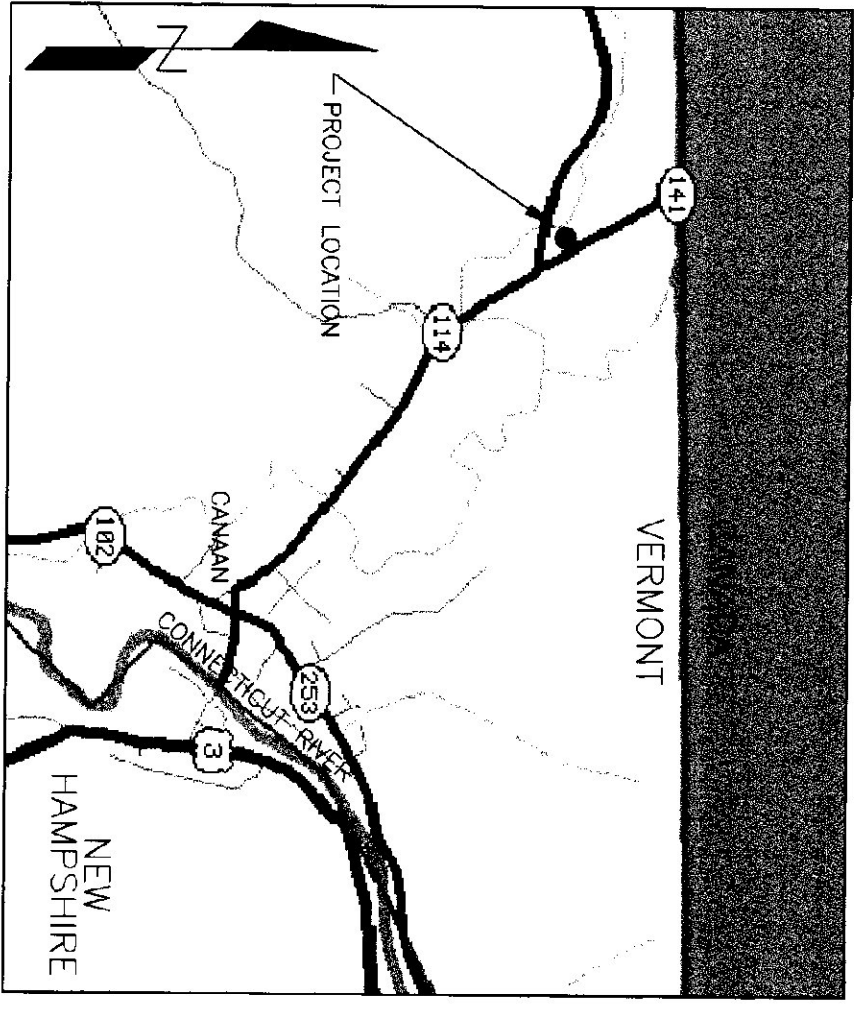
FUEL PIPING SCHEMATIC
N.T.S.



DEMO PLAN
1/8" = 1'-0"



STATE LOCATION
N.T.S.



PROJECT LOCATION MAP