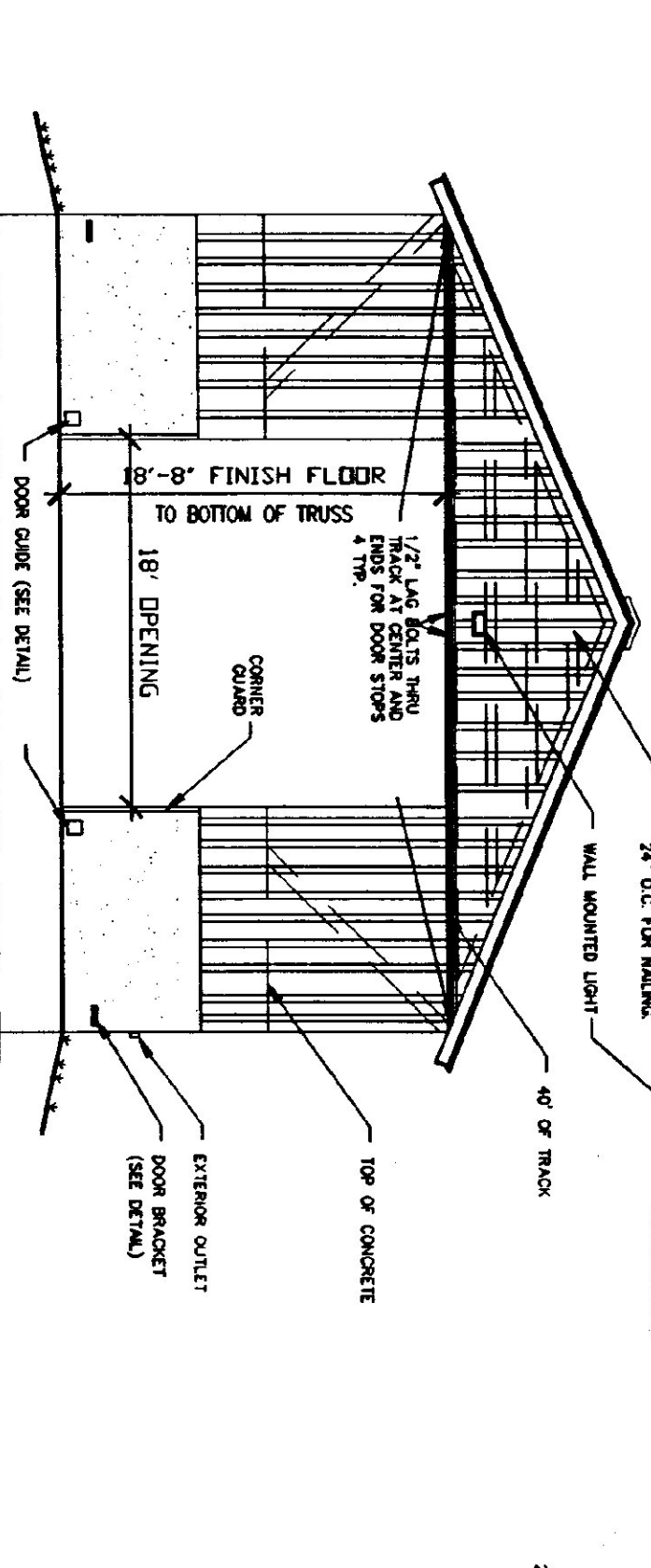
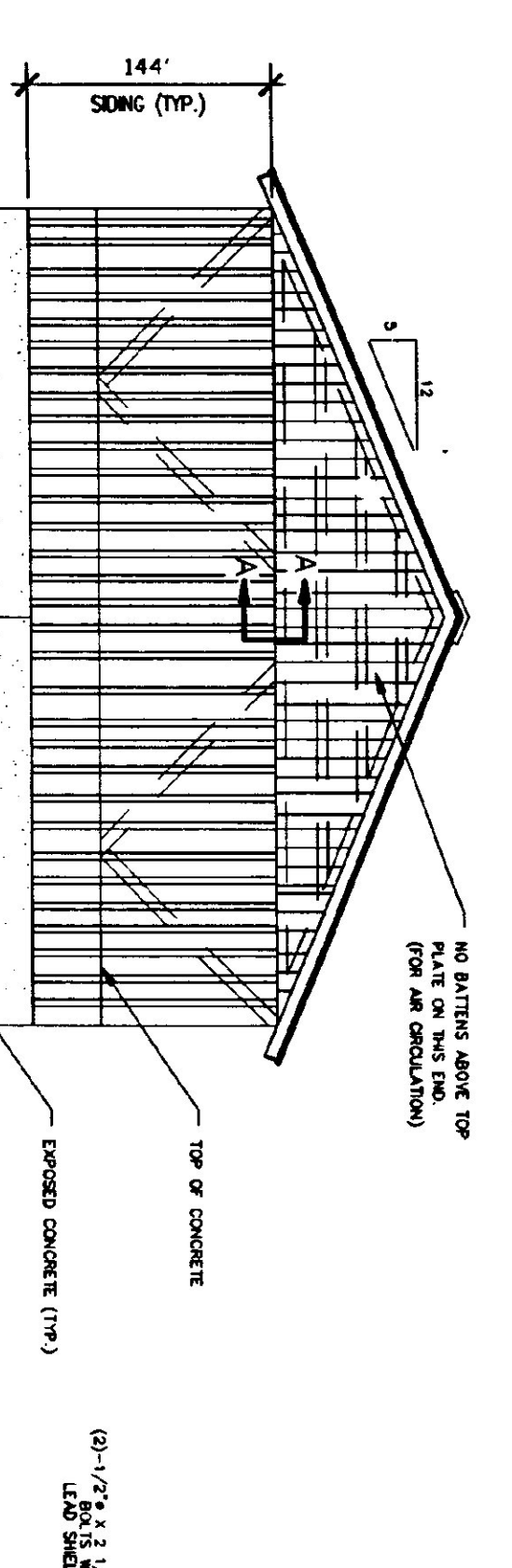


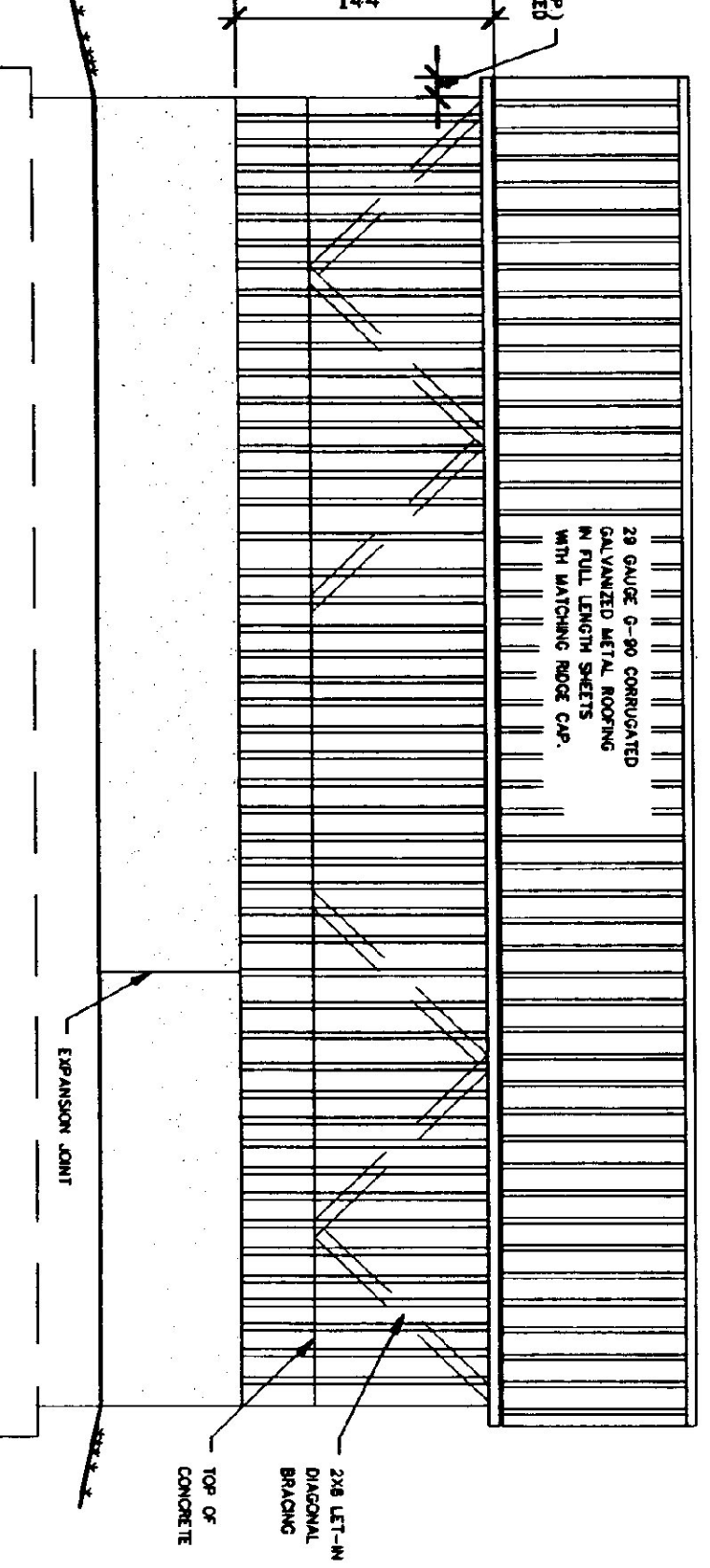
FOUNDATION PLAN  
SCALE: 1/8" = 1'-0"



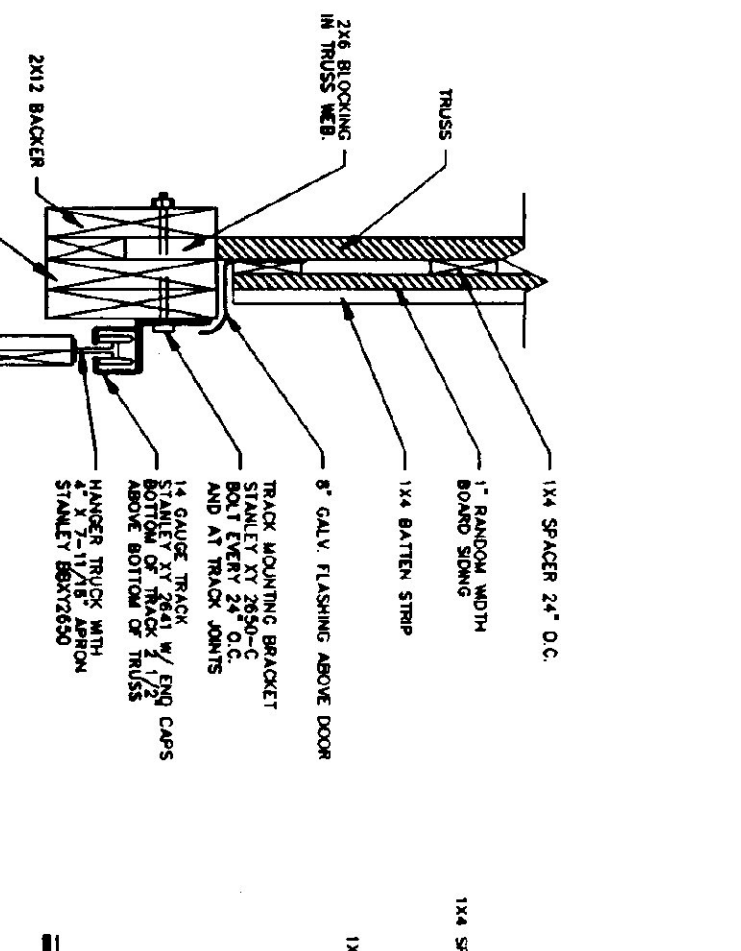
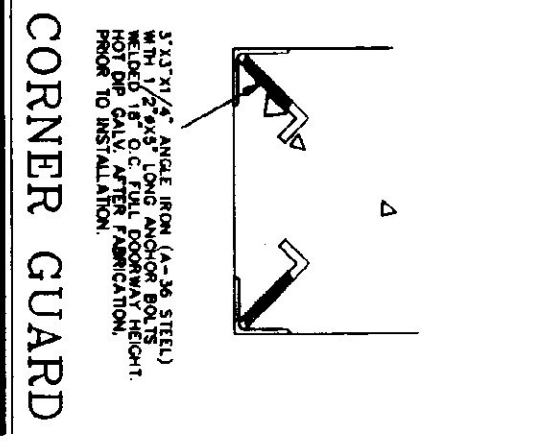
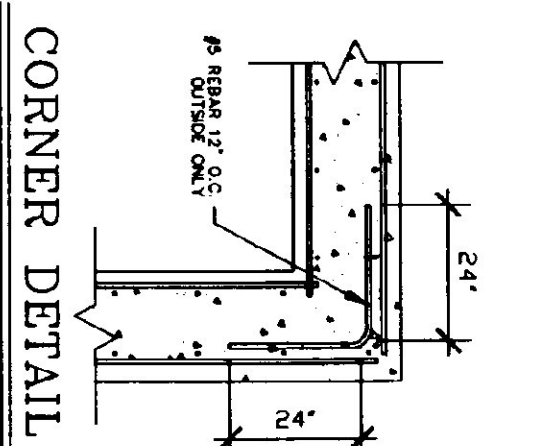
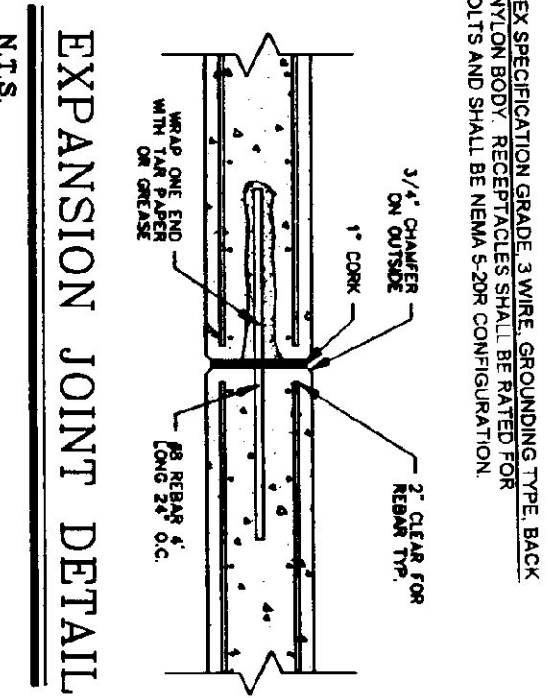
FRONT ELEVATION  
SCALE: 1/8" = 1'-0"



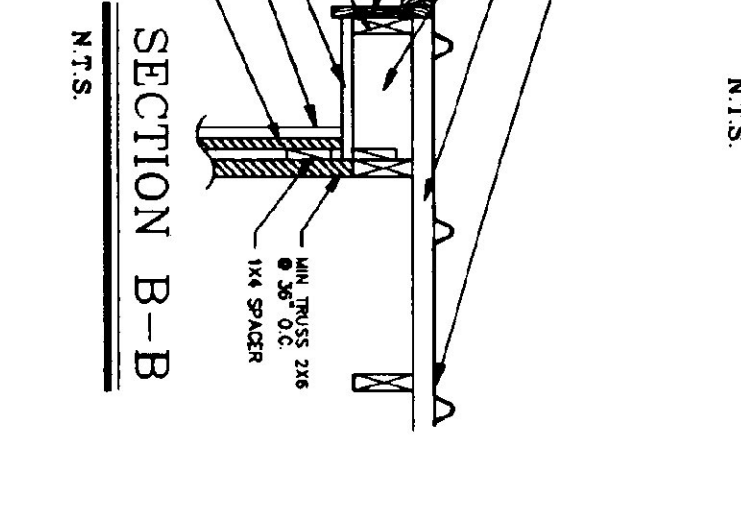
BACK ELEVATION  
SCALE: 1/8" = 1'-0"



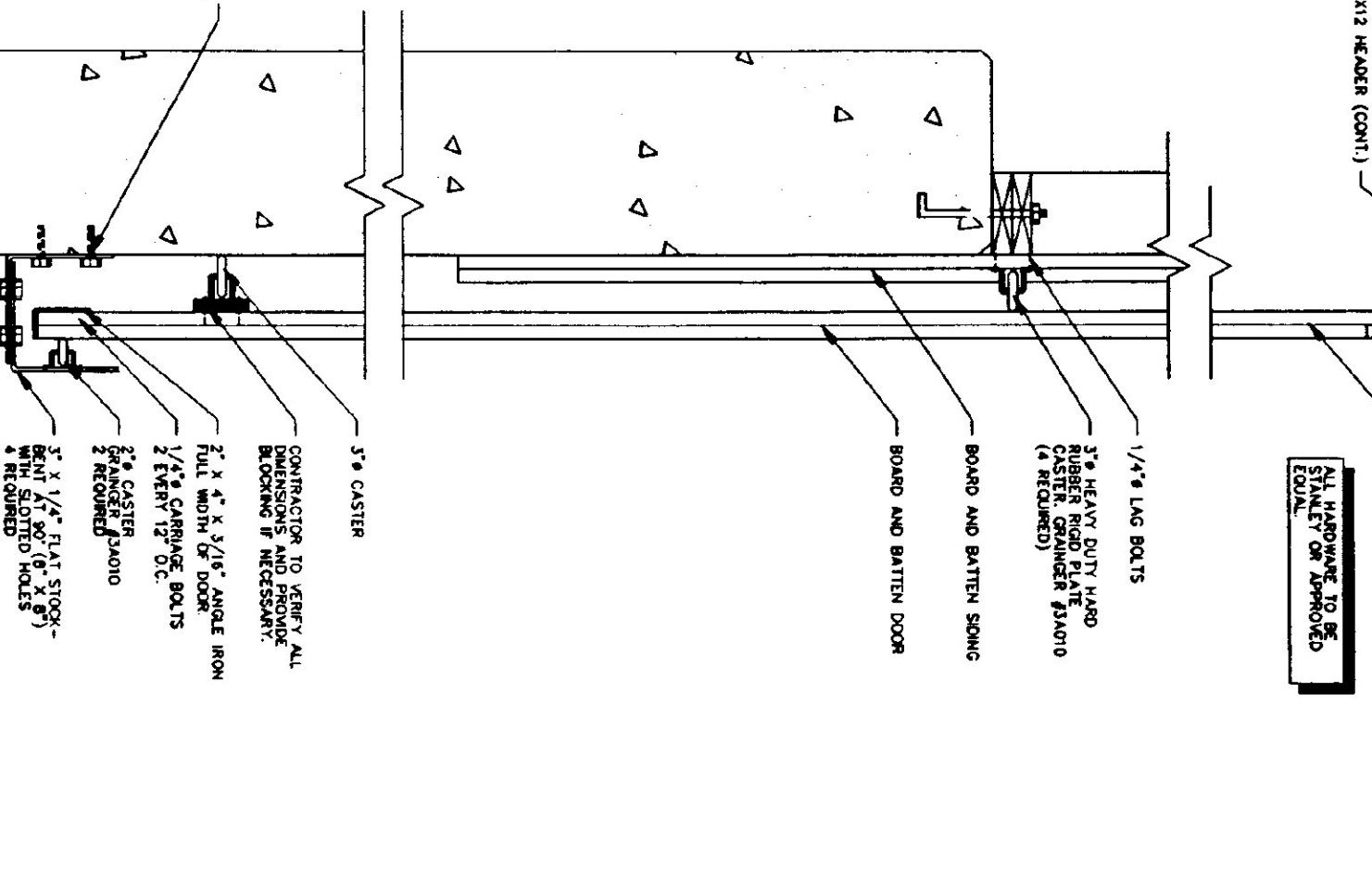
SIDE ELEVATION  
SCALE: 1/8" = 1'-0"



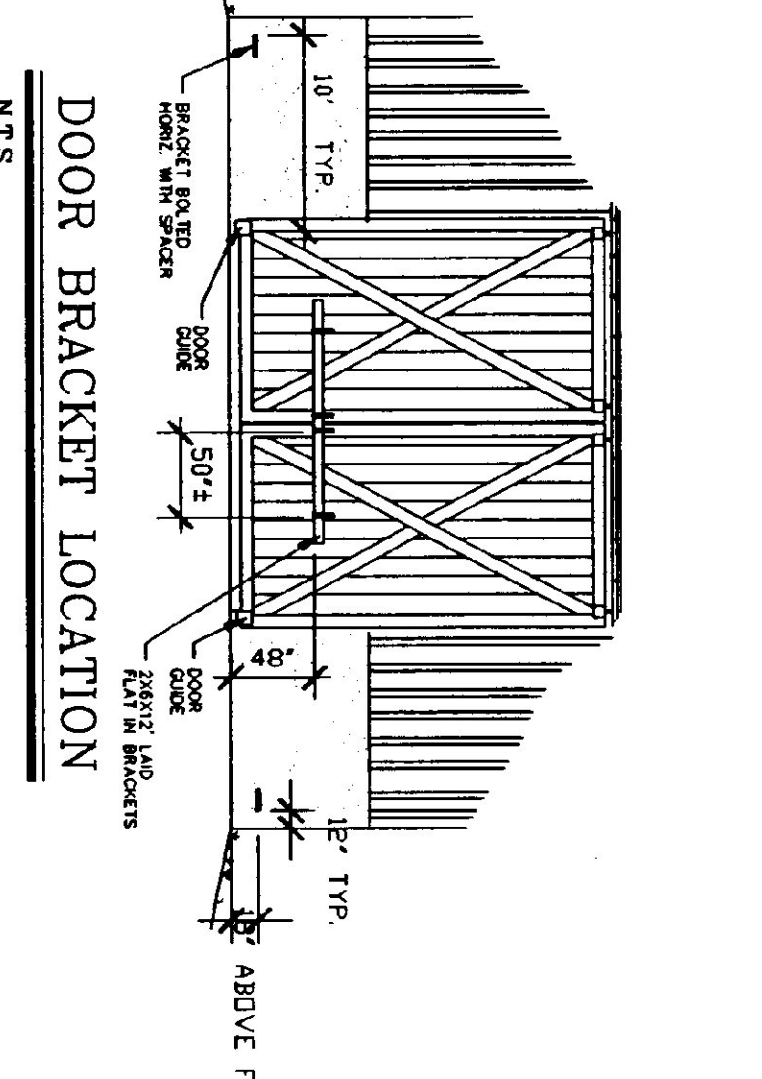
SECTION A-A  
N.T.S.



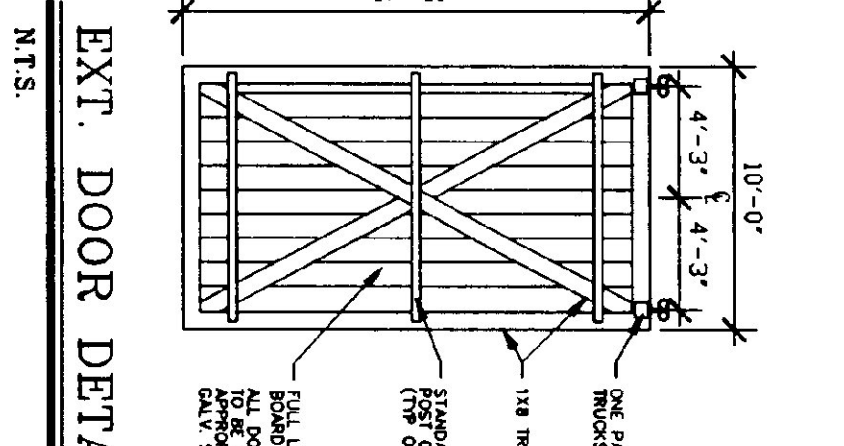
SECTION B-B  
N.T.S.



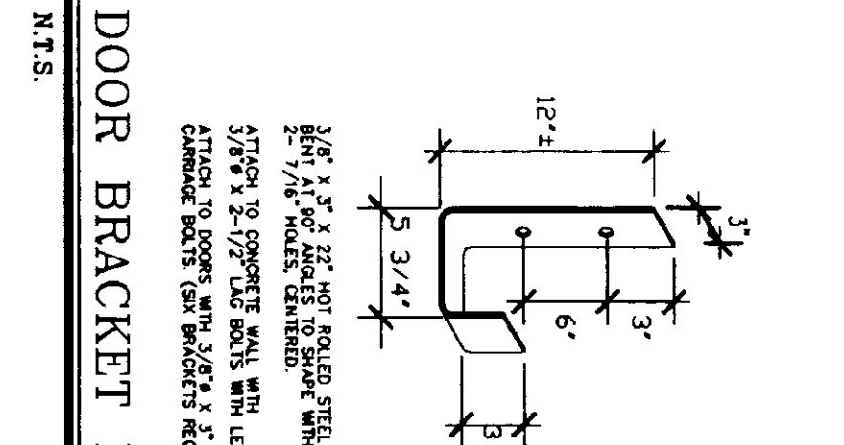
DOOR TRACK & GUIDE DETAIL  
N.T.S.



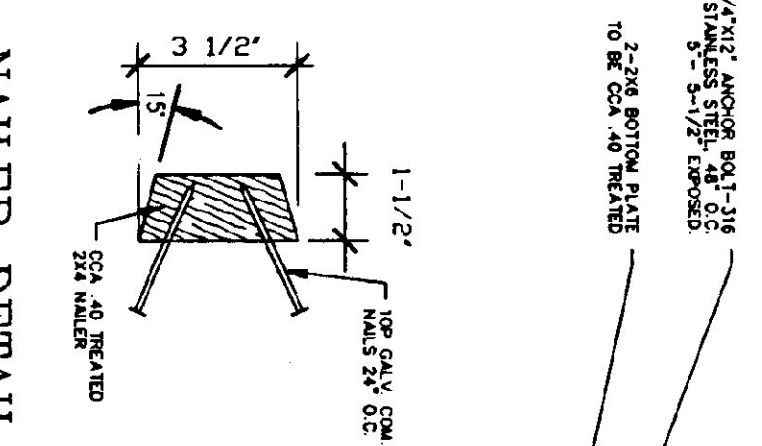
DOOR BRACKET LOCATION  
N.T.S.



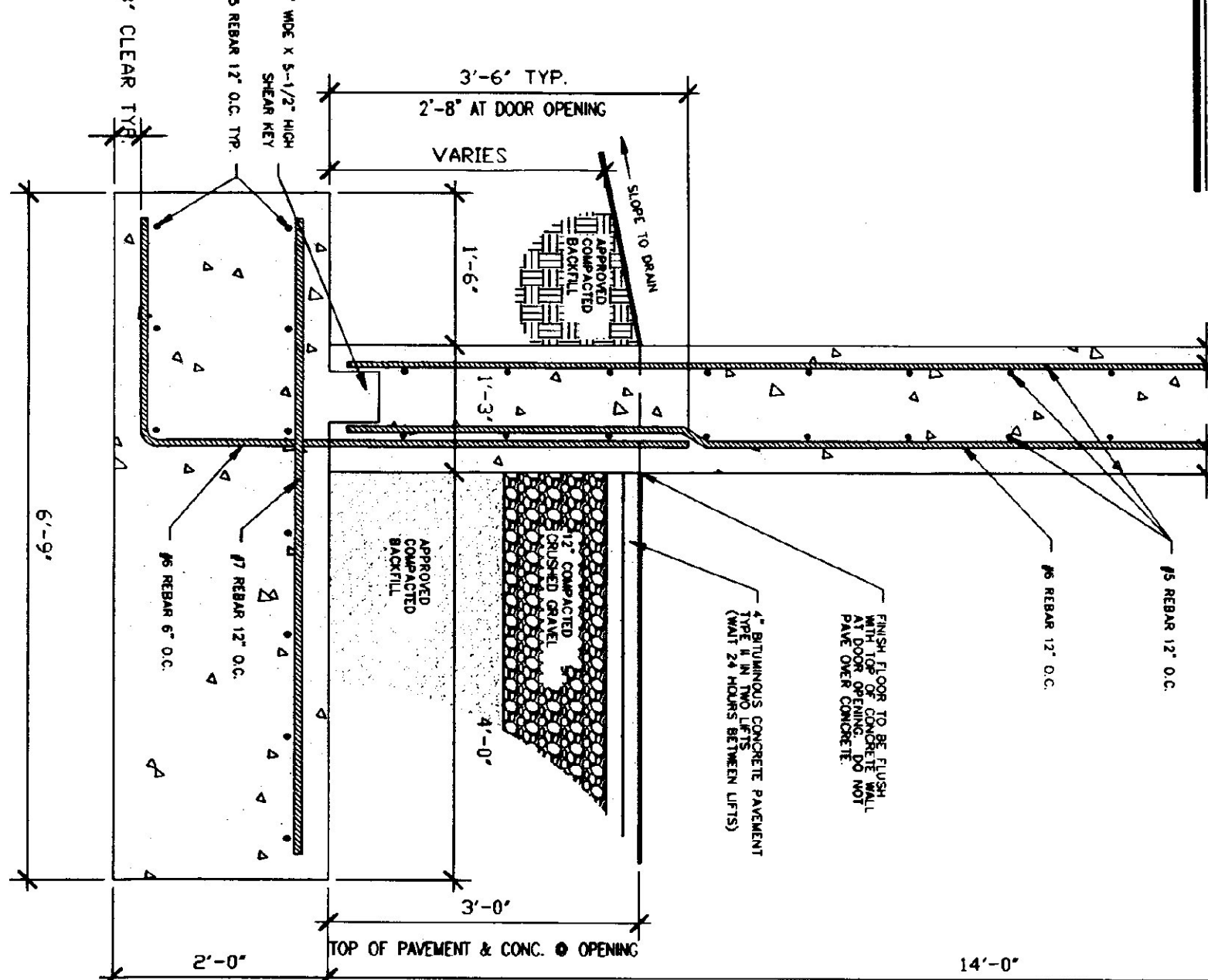
EXT. DOOR DETAIL  
N.T.S.



DOOR BRACKET DETAIL  
N.T.S.



NAILER DETAIL  
N.T.S.



WALL SECTION (TYP.)  
SCALE: 3/4" = 1'-0"

**GENERAL NOTES:**

- ALL EXPOSED METAL BRACKETS ETC. SHALL BE PAINTED FOR PROTECTION.
- CONCRETE SHALL BE 3000 P.S.I. WITH A MAXIMUM SLUMP OF 4".
- 58-82 AIR ENTRAINMENT.
- 1/2" JOINTS IN EXPOSED FACE OF CONSTRUCTION JOINTS.
- 3/4" CHAMFER ON EACH FACE OF EXPANSION JOINTS.
- ANGLE IRON DASH INTO WALL CORNERS AT DOOR OPENINGS. (SEE DETAIL)
- RE-BAR TO BE CONTINUOUS THROUGH CONSTRUCTION JOINTS.
- NO HORIZONTAL CONSTRUCTION JOINTS IN WALLS - CONTINUOUS POUR.
- NO CONSTRUCTION JOINTS REQUIRED IN FOUNDATIONS.
- CONCRETE TO LEAVE NO METAL WITHIN 1" OF SURFACE. USE 1" DEEP FASCIAS CORERS AT ALL VERT. AND HORIZ. ALL THE JOINTS WITH AN APPROVED NON-SHAKEN GROUT.
- ALL RE-BAR TO BE STORED ON BLOCKING 4" MIN. ABOVE GROUND.
- RE-BAR TO BE STORED ON BLOCKING 4" MIN. ABOVE GROUND.
- CONCRETE SUPPLIER TO PROVIDE TEST CYLINDERS FOR CONCRETE TESTING.
- ALL CONCRETE TESTING TO BE DONE BY CHIEF CONTRACTOR.
- EXPOSED WALLS TO BE DRESS FINISHED PER A.O.T. SPECIFICATIONS.

**TRUSS NOTES:**

- TRUSS MANUFACTURER TO PROVIDE THE DETAIL OF STATE BUILDING ENGINEER TRUSS MANUFACTURER TO PROVIDE THE CONSTRUCTION WITH ALL THE NECESSARY TRUSS MANUFACTURER.
- TRUSS MANUFACTURER TO PROVIDE TRUSS INSTALLATION, ANCHORAGE, BRACING, LIFTING, ETC. TRUSS DESIGN IN ACCORDANCE WITH THE 1987 B.O.C.A. FOR VERMONT.
- MINIMUM LOADS:
- LINE - 30 P.S.F. - PER 1987 B.O.C.A. FOR VERMONT.
- DEAD - AS CALCULATED FROM TRUSS AND ROOF MATERIALS AND IN ADDITION WIND - 23 P.S.F. ON BOTTOM CHORD.
- DIAGONAL BRACING PER TRUSS MANUFACTURER AND PER MINIMUM TRUSS BRACING DETAIL IN SPECIFICATIONS.

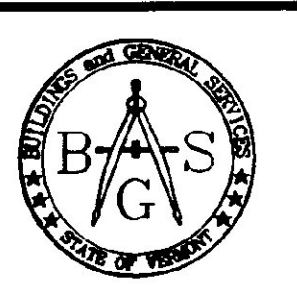
**CONCRETE NOTES:**

- ALL CONCRETE TO BE 3000 P.S.I. WITH A MAXIMUM SLUMP OF 4".
- 58-82 AIR ENTRAINMENT.
- 1/2" JOINTS IN EXPOSED FACE OF CONSTRUCTION JOINTS.
- 3/4" CHAMFER ON EACH FACE OF EXPANSION JOINTS.
- ANGLE IRON DASH INTO WALL CORNERS AT DOOR OPENINGS. (SEE DETAIL)
- RE-BAR TO BE CONTINUOUS THROUGH CONSTRUCTION JOINTS.
- NO HORIZONTAL CONSTRUCTION JOINTS IN WALLS - CONTINUOUS POUR.
- NO CONSTRUCTION JOINTS REQUIRED IN FOUNDATIONS.
- CONCRETE TO LEAVE NO METAL WITHIN 1" OF SURFACE. USE 1" DEEP FASCIAS CORERS AT ALL VERT. AND HORIZ. ALL THE JOINTS WITH AN APPROVED NON-SHAKEN GROUT.
- ALL RE-BAR TO BE STORED ON BLOCKING 4" MIN. ABOVE GROUND.
- RE-BAR TO BE STORED ON BLOCKING 4" MIN. ABOVE GROUND.
- CONCRETE SUPPLIER TO PROVIDE TEST CYLINDERS FOR CONCRETE TESTING.
- ALL CONCRETE TESTING TO BE DONE BY CHIEF CONTRACTOR.
- EXPOSED WALLS TO BE DRESS FINISHED PER A.O.T. SPECIFICATIONS.

LOCATION & BUILDING  
40' X 64' SALT SHED



STATE OF VERMONT  
DEPARTMENT OF BUILDINGS  
AND GENERAL SERVICES  
AGENCY OF ADMINISTRATION  
MONTPELIER, VERMONT



A-1  
4 OF 6

SCALE: AS NOTED  
DATE: JAN 1997  
DRAWN BY: G. D. NORWOOD  
APPR. BY:

REVISIONS  
12-29-97 G.D.N.  
7-7-98 G.D.N.

CANAAN  
40' X 64'  
SAND-SALT  
SHED

CANAAN

VERMONT