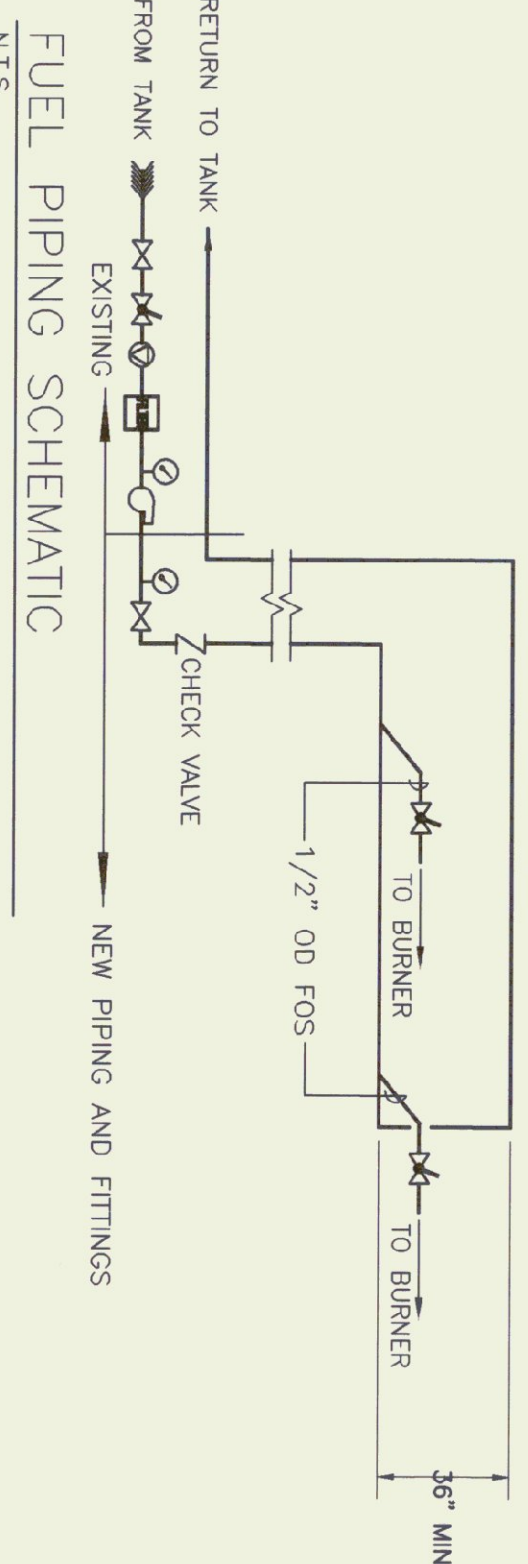
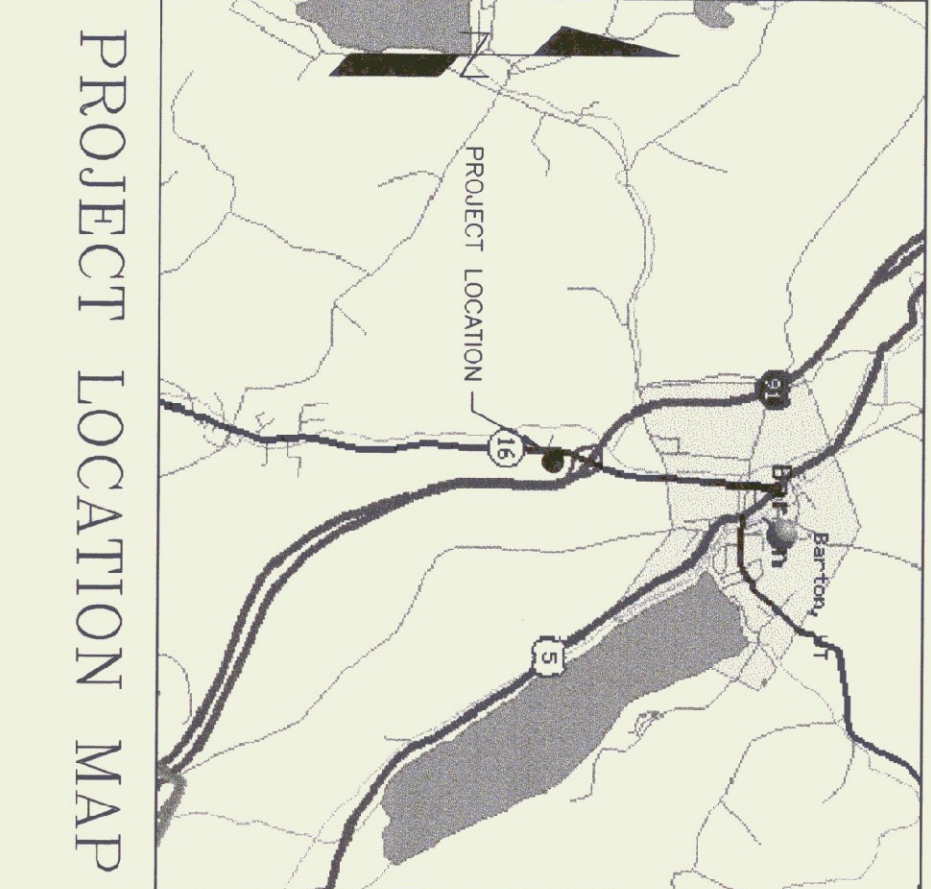
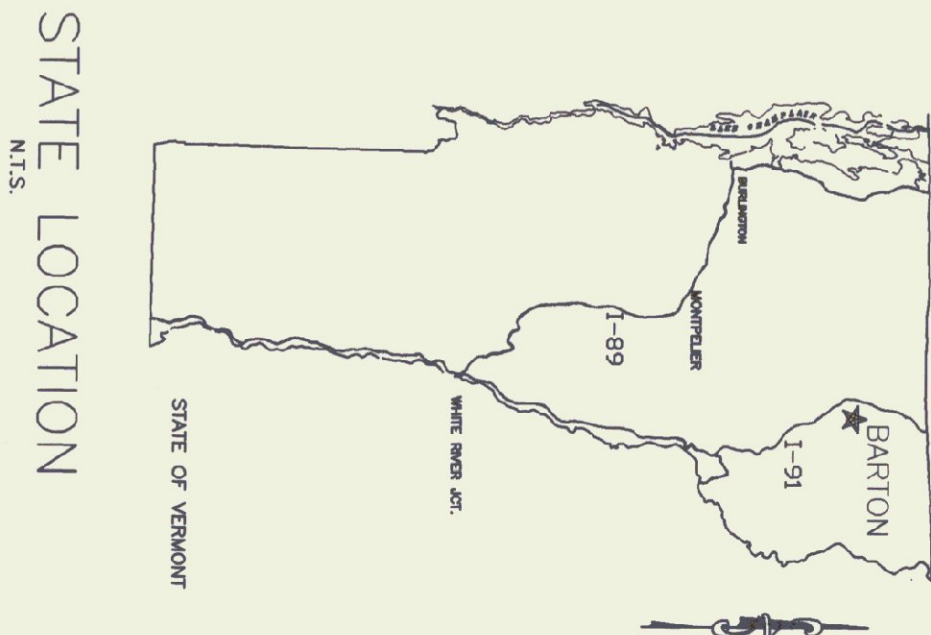


MECHANICAL PLAN
SCALE: 1/4" = 1' - 0"



FURNACE SCHEDULE

NO.	MAKE/MODEL	FUEL	CFM	BLOWER HP	VOLTAGE	FLUE
1	JACKSON - CHURCH 350-28	# 2 OIL	3050	3/4	230	9"
2	LINCOLN 1025	CHUNK WOOD	4140	1	115/230	8"



LEGEND

- FIRE DAMPER
- ▽ VOLUME DAMPER
- ⊙ THERMOSTAT X 0 = OIL W = WOOD
- ⊕ FULL PORTED BALL VALVE
- ⊗ FLEXIBLE W/LEVER & WIRE TO FUSIBLE LINK @ BURNER
- ⊘ PRESSURE VACUUM GAUGE
- ⊕ UNION
- ⊕ AUTOMATIC AIR VENT ON 6" AIR CHAMBER
- ⊕ STRAP ON ADJUSTABLE SET @ 120°F
- ⊕ STRAINER
- ⊕ DRAIN
- ⊕ VIBRATION ISOLATOR
- ⊕ FUEL OIL TRANSFER PUMP
- ⊕ BURNER SAFETY SWITCH

SCALE: AS NOTED
DATE: MAY 1999
DRAWN BY: R. PRATT
APPR. BY:

REVISIONS

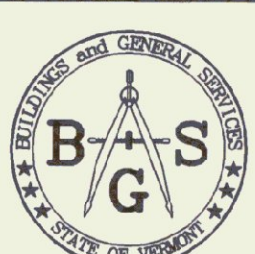
--	--

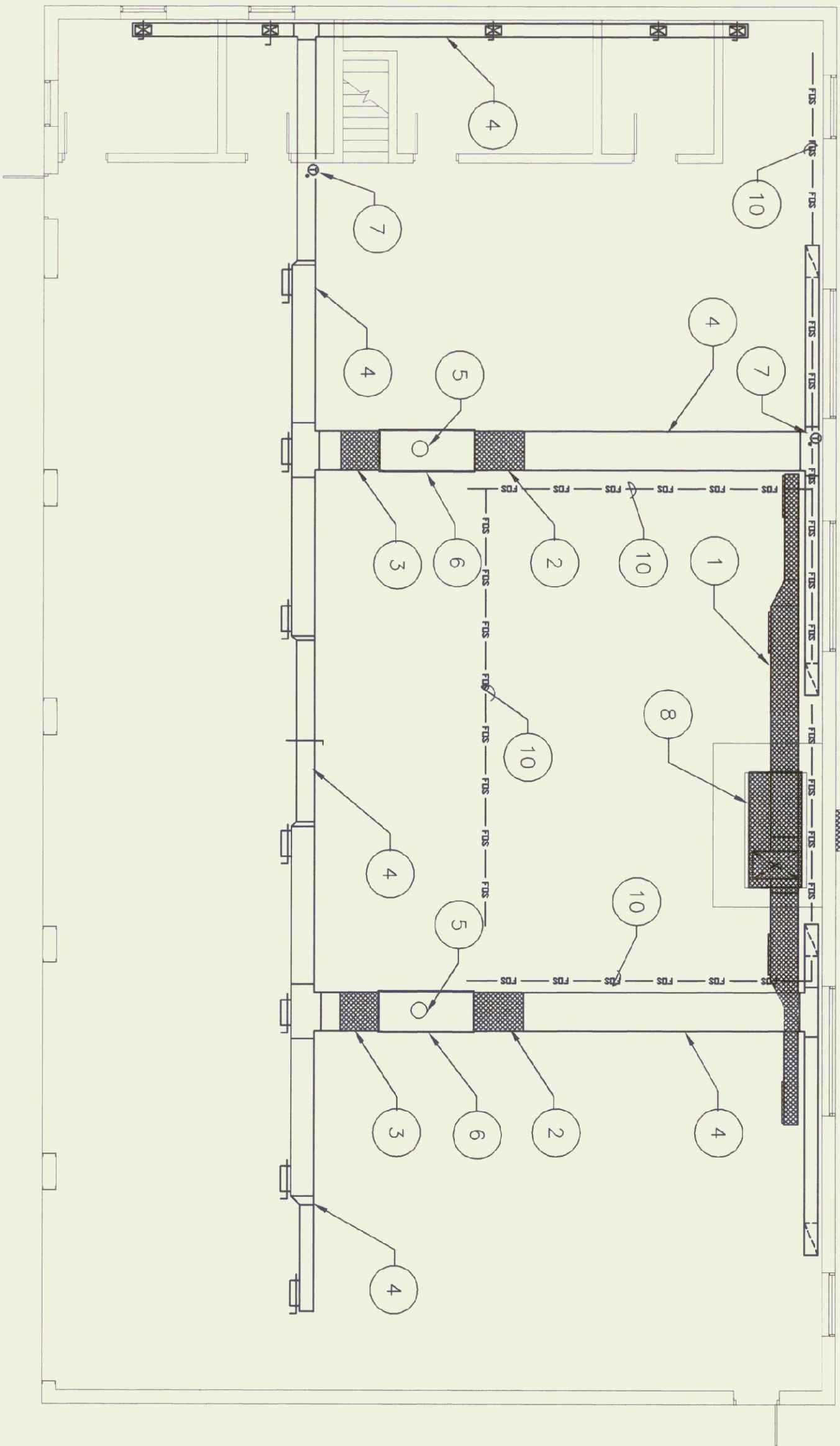
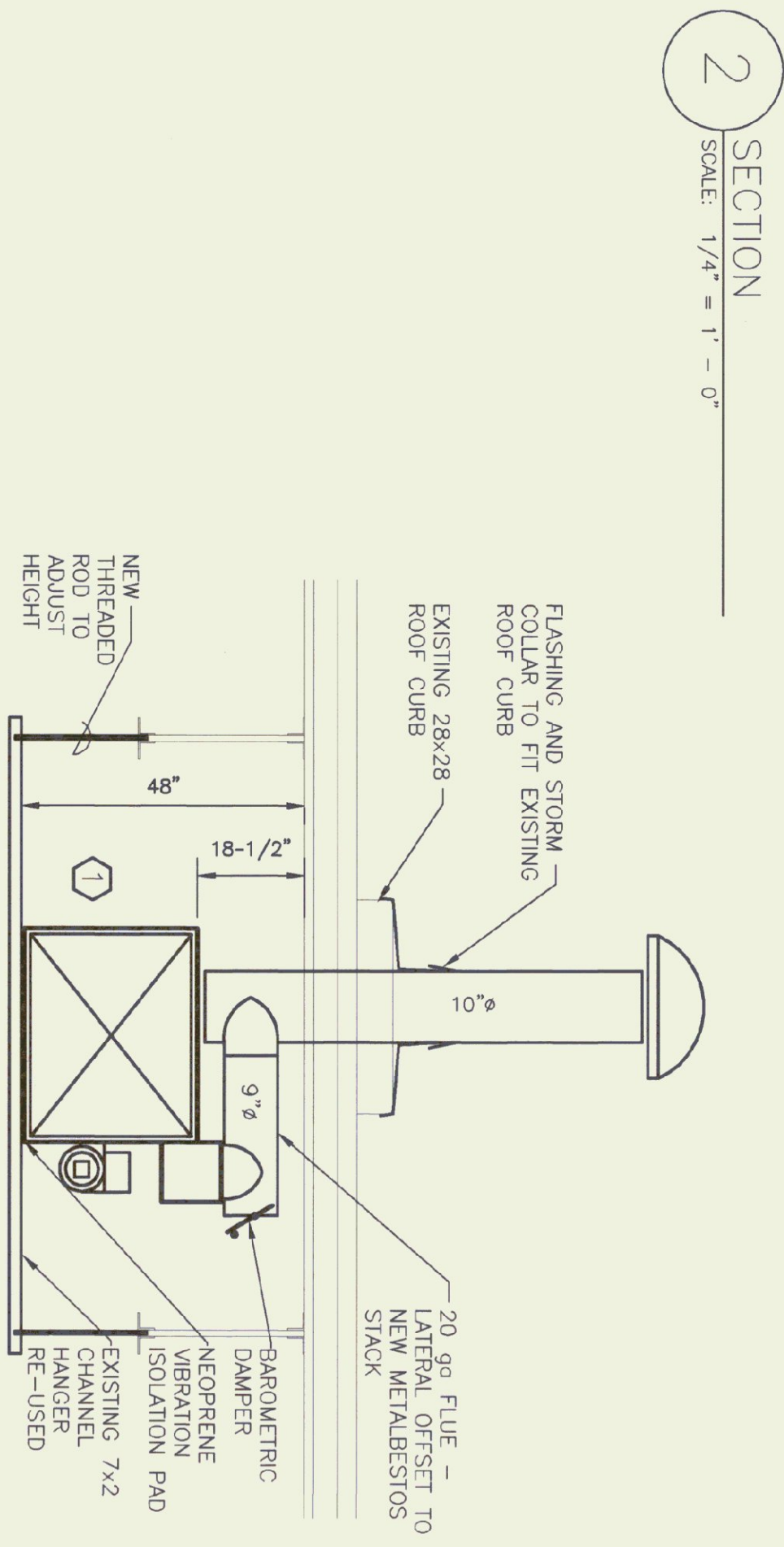
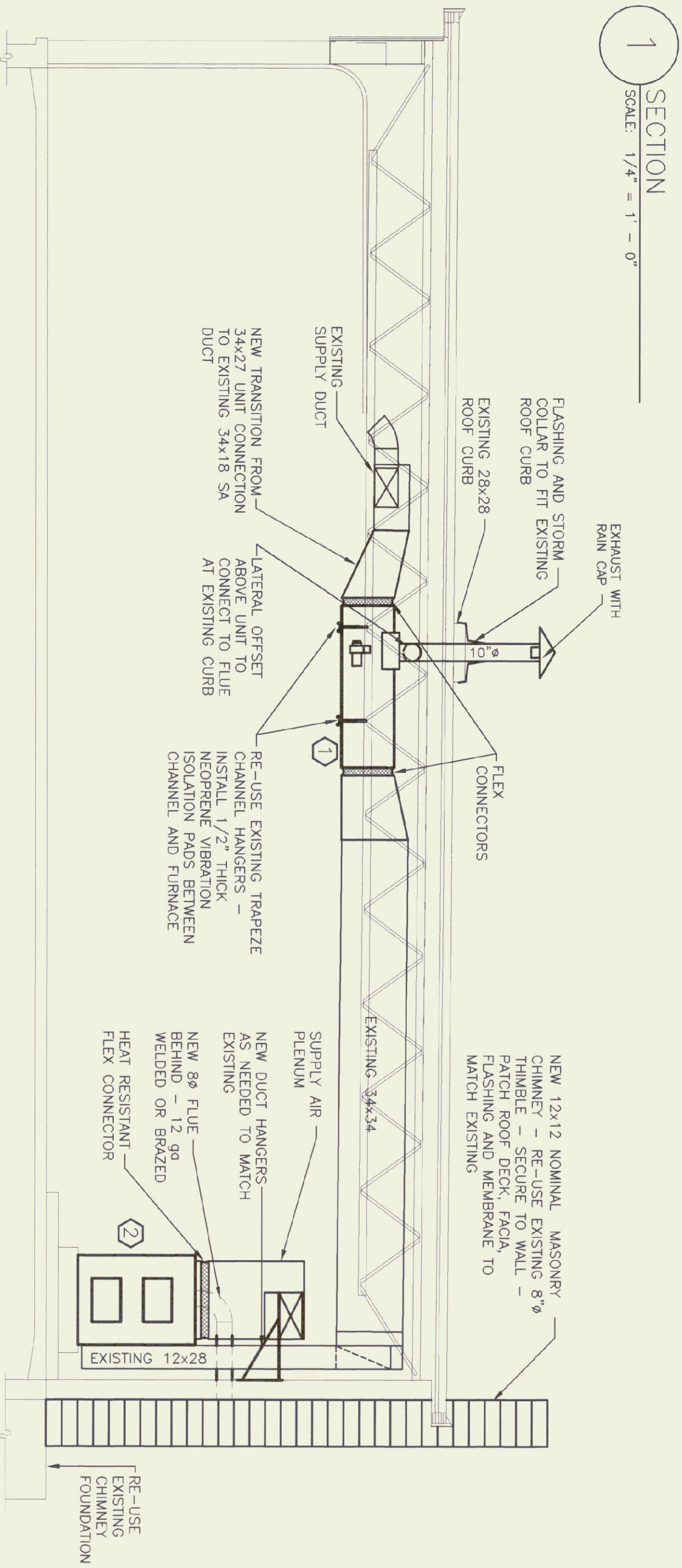
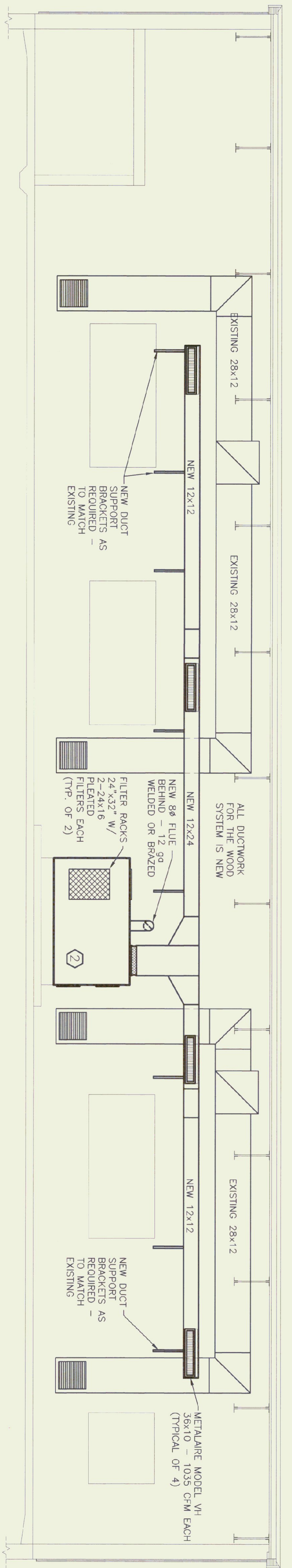
BARTON - A.O.T. GARAGE
FURNACE REPLACEMENTS
FLOOR PLANS

BARTON, VERMONT



STATE OF VERMONT
Department of Buildings
and General Services
Agency of Administration
Montpelier, Vermont





DEMO NOTES:

- 1 REMOVE DUCT SHOWN HATCHED
- 2 REMOVE DUCT SHOWN HATCHED - AS REQUIRED TO INSTALL NEW TRANSITION
- 3 REMOVE EXISTING TRANSITION SHOWN HATCHED
- 4 EXISTING DUCT TO REMAIN AS IS
- 5 REMOVE EXISTING FLUE & PART INDUCER ASSEMBLY ON ROOF ABOVE DUCT CURB TO REMAIN AS IS AND TO BE RE-USED IN NEW WORK
- 6 REMOVE EXISTING FURNACE FLUE, WIRING, & FUEL LINES - EXISTING TRAPEZE CHANNEL HANGERS ARE TO BE RE-USED
- 7 REMOVE EXISTING THERMOSTATS AND BASES - NEW THERMOSTATS TO BE MOUNTED IN THE SAME LOCATIONS - EXISTING THERMOSTAT WIRING MAY BE RE-USED PROVIDED IT MEETS CURRENT CODES
- 8 REMOVE EXISTING WOOD FURNACE, POWER WIRING, FUEL PIPE, & CONTROLS - EXISTING PAD AND DUCT HANGERS TO BE RE-USED
- 9 EXISTING MASONRY CHIMNEY TO FOOTING AT GRADE LEVEL - FOOTING TO BE RE-USED FOR NEW MASONRY CHIMNEY
- 10 REMOVE EXISTING FUEL LINES - SUPPLY BACK TO PUMP OUTLET AND RETURN TO SLEEVE AT SLAB - PREP PIPES FOR RECONNECTION UNDER NEW WORK (SEE FUEL PIPING SCHEMATIC ON M1)