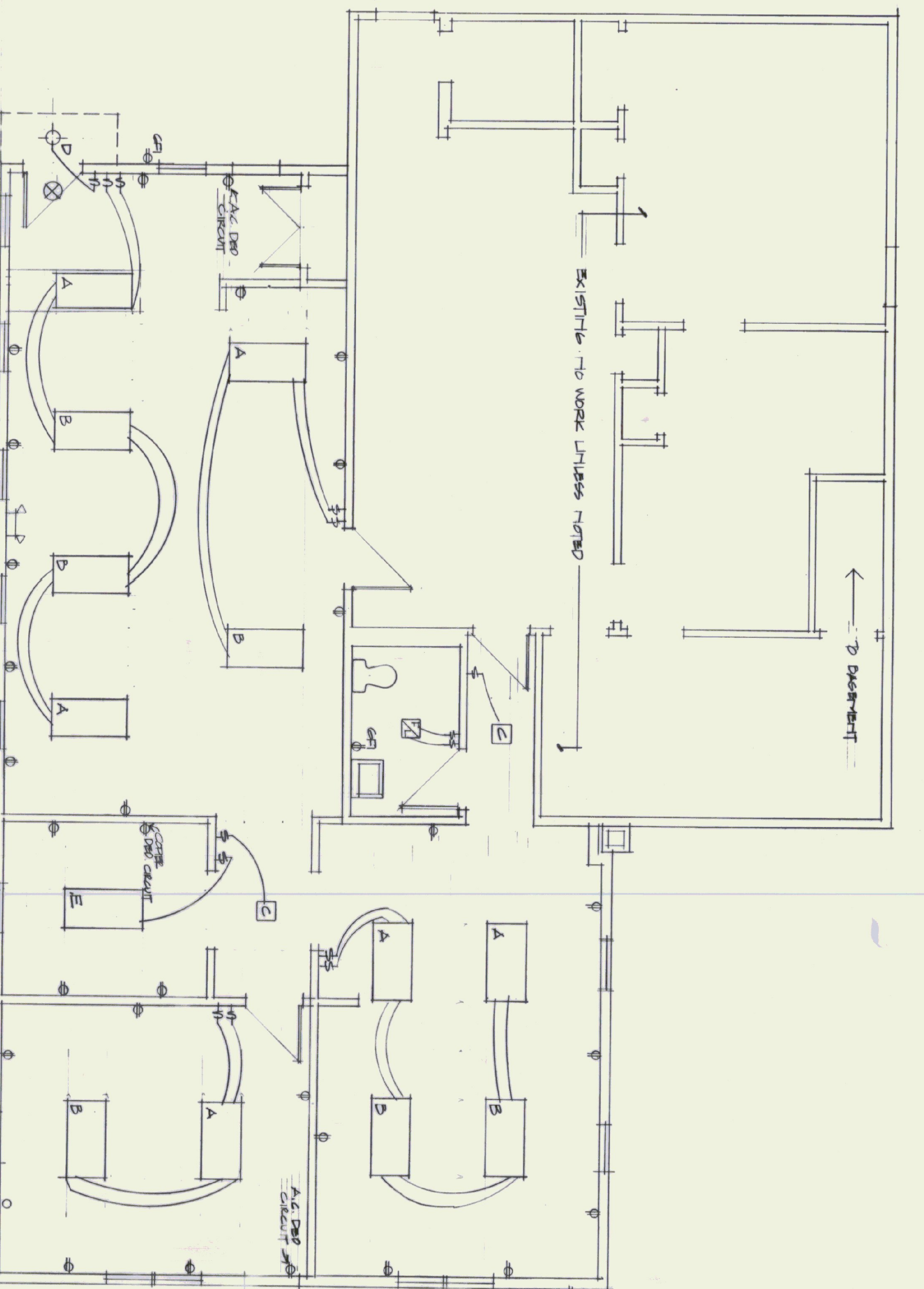


MECHANICAL PLAN @ 1/4" = 1'-0"

MECHANICAL EQUIPMENT SCHEDULE	
ITEM	DESCRIPTION
BBR	BASEBOARD RADIATION, STERLING SENIOR, TYPE SR-34-45, 3/4" C, 58 FINS PER FOOT, 1 ROW, 6 1/2" INCH ENCLOSURE HEIGHT, 780 BTU/HFT @ 180F DEGREE AWT, 65F EAT. PROVIDE ALL REQUIRED ACCESSORIES.
CR-C-1	ZONE CIRCULATOR, ENTRY, ADMINISTRATION, & RESTROOM, TACO MODEL 007, 4 GPM @ 10', 120 VAC WITH ISOLATION VALVES AND FLO-CHECK, CONNECT TO EXISTING SUPPLY/RETURN HEADER, T-87 THERMOSTAT AND PUMP CONTROL.
CR-C-2	ZONE CIRCULATOR, WORK, OFFICE, & PLAN ROOM, TACO MODEL 007, 4 GPM @ 10', 120 VAC WITH ISOLATION VALVES AND FLO-CHECK, CONNECT TO EXISTING SUPPLY/RETURN HEADER, T-87 THERMOSTAT AND PUMP CONTROL.
FL	EXHAUST FAN/LIGHT, 105 CFM, DANTON 45295, 120 VAC, WITH WALL HOOD AND BACK DRAFT DAMPER.

PLUMBING FIXTURE SCHEDULE							
ITEM	MANUFACTURER & MODEL	TRIM & ACCESSORIES	CONNECTION SIZES			REMARKS	
			WASTE	VENT	CW		HW
LAV	AMERICAN STANDARD 'PENLVN' LAVATORY CAT. NO. 0273.027	AMERICAN STANDARD 'REGALVN' FACET CAT. NO. 2385.130	1 1/4"	1 1/2"	1/2"	1/2"	WHITE FIXTURE OFFSET P-TRAP & INSULATE ALL EXPOSED PIPING AT LAV.
WC	AMERICAN STANDARD 'CADET 1P' RIM HEIGHT CAT. NO. 2108.500	SEAT - OLSONITE #95 OPEN FRONT LESS COVER	3"	2"	3/8"		TANK LINER



ELECTRICAL PLAN @ 1/4" = 1'-0"

NOTE - PHONE SYSTEM BY STATE

LIGHTING FIXTURE SCHEDULE					
TYPE	MANUFACTURER & MODEL	MOUNTING	LAMPS	VOLT	REMARKS
AB	COLUMBIA WCW-340A - MS ED	SURFACE	3 - FO32T8, 3500 K	120	MASTERSLAVE, 1T WHP WIRED FOR DUAL LEVEL SWITCHING
C	PRESCOLITE 9458	SURFACE	2 - 13W PL-13	120	
D	PRESCOLITE 1224 M1 - 33W/FE - M3822	RECESSED	32W MET HAL	120	
E	COLUMBIA WC-240A - EO	SURFACE	2 - FO32T8, 3500 K	120	ELECTRONIC BALLAST
FL	BROAN 657	RECESSED	A75 WATT	120	DUPLEX FAN/LIGHT SWITCH
○	PRESCOLITE EX1LED - R - EM	SURFACE	INCLUDED	120	
○	PRESCOLITE EX1LED - R - EM	SURFACE	LED	120	

STATE OF VERMONT
DEPARTMENT OF STATE BUILDINGS
AGENCY OF ADMINISTRATION
MONTPELIER, VERMONT

ST. ALBANS A.O.I. OFFICES
St. Albans Town, Vermont
DUNCAN • WISNIEWSKI ARCHITECTURE
207 King Street, Burlington, VT 05401 802.864.6673 802.864.6532 (FAX)

DATE: 25 MAY 95
DRAWN BY: MW
SCALE: 1/4" = 1'-0"
APPROVED BY: MW
REVISIONS:
ME.1
6 OF 6