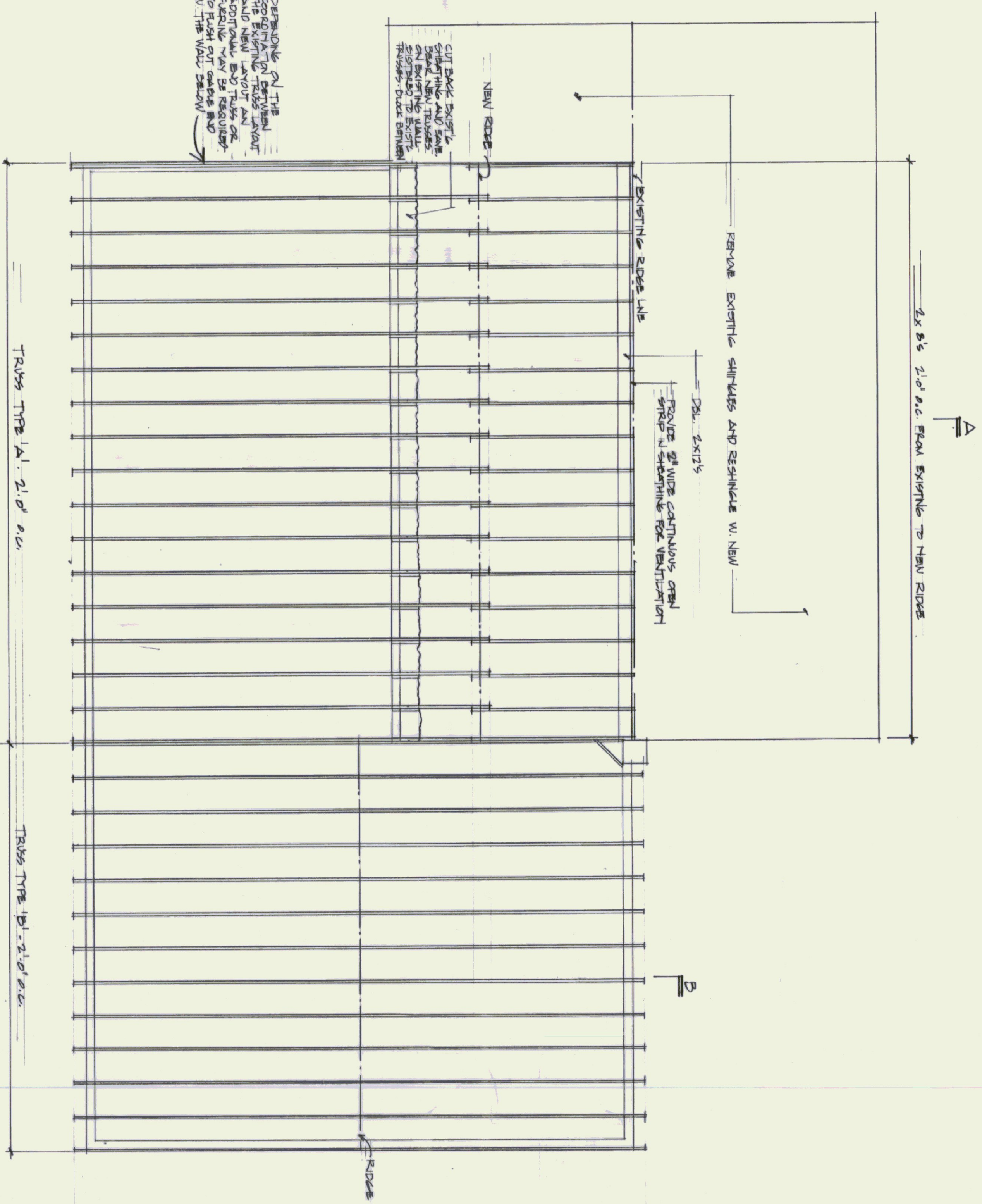


ROOF FRAMING PLAN @ 1/4" = 1'-0"



STATE OF VERMONT DEPARTMENT OF STATE BUILDINGS AGENCY OF ADMINISTRATION MONTPELIER, VERMONT			
ST. ALBANS A.O.I. OFFICES St. Albans Town, Vermont			
DUNCAN • WISNIEWSKI ARCHITECTURE 207 King Street, Burlington, VT 05401 802.864.4693 864.4693 (6X0)			
DATE 25 MAY 95	SCALE 1/4" = 1'-0"	REVISIONS	DRY
DRAWN BY MW	APPROVED BY MW		S of 6