

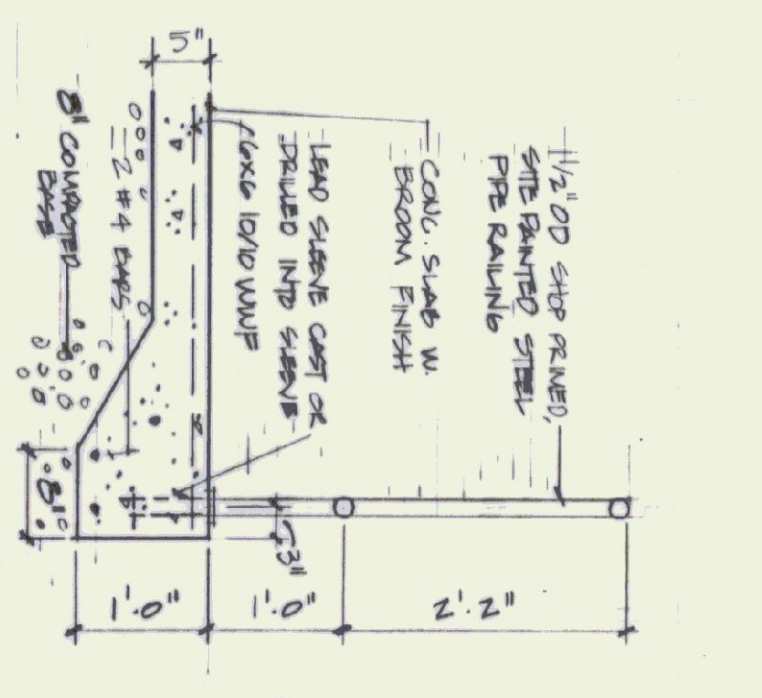
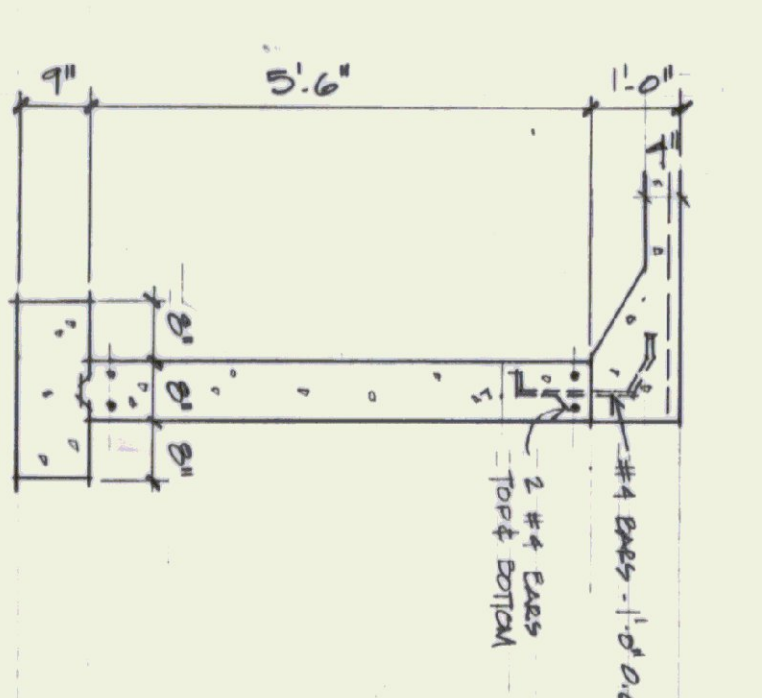
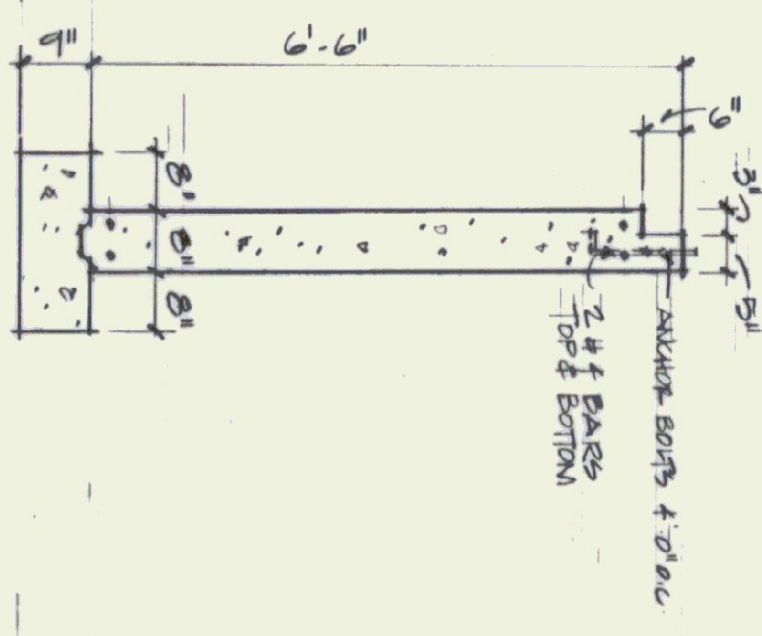
1 STAIR/RAILING DETAIL
1/2" = 1'-0"

FOUNDATION PLAN @ 1/4" = 1'-0"

1 TYPICAL FOUNDATION
1/2" = 1'-0"

2 ENTRY DETAIL
1/2" = 1'-0"

3 RAMP SLAB/RAILING
3/4" = 1'-0"



STATE OF VERMONT
DEPARTMENT OF STATE BUILDINGS
AGENCY OF ADMINISTRATION
MONTPELIER, VERMONT

ST. ALBANS A.O.I. OFFICES
St. Albans Town, Vermont
DUNCAN • WISNIEWSKI ARCHITECTURE
207 King Street, Burlington, VT 05401 802.264.6933 804.6332 (FAX)

DATE: 25 MAY 95	SCALE: VARIES	REVISIONS:	DMG. NO. A-4
DRAWN BY: MW	APPROVED BY:		4 OF 6