

1 WOOD BRACKET SIDE
1/2" = 1'-0"

2 PLAN & SECTION @ ENTRY
1/2" = 1'-0"

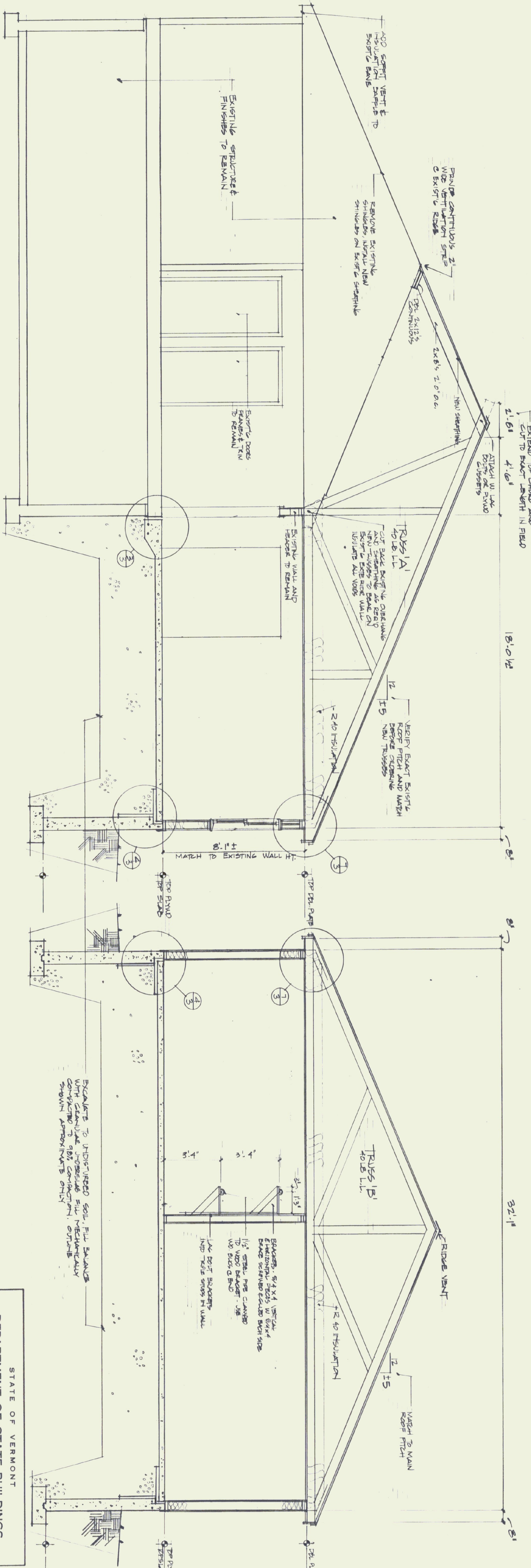
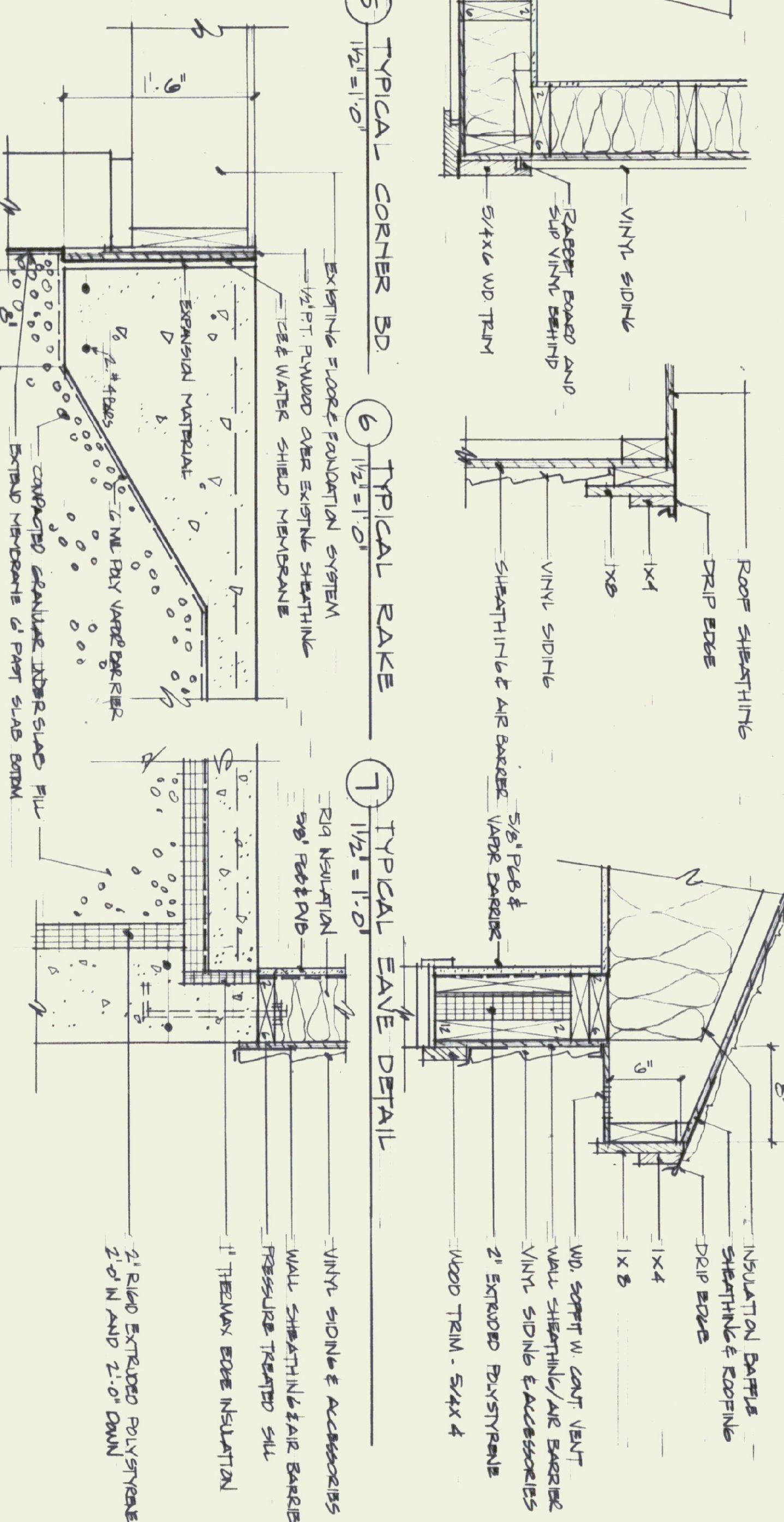
3 TYPICAL EXISTING FLOOR - NEW SLAB JOINT
1/2" = 1'-0"

4 TYPICAL WALL - SLAB FOUNDATION DETAIL
1/2" = 1'-0"

5 TYPICAL CORNER BD
1/2" = 1'-0"

6 TYPICAL RAKE
1/2" = 1'-0"

7 TYPICAL EAVE DETAIL
1/2" = 1'-0"



SECTION A.A.
3/8\"/>

SECTION B.B.
3/8\"/>

STATE OF VERMONT
DEPARTMENT OF STATE BUILDINGS
AGENCY OF ADMINISTRATION
MONTPELIER, VERMONT

ST. ALBANS A.O.T. OFFICES
St. Albans Town, Vermont

DUNCAN • WISNIEWSKI ARCHITECTURE
207 King Street, Burlington, VT 05401 802.864.6693 864.6932 FAX

DATE: 25 MAY 95
DRAWN BY: MW
SCALE: VARIOUS
APPROVED BY: MW

REVISIONS:
DATE: 11/3
SCALE: A.3
3 OF 6

REGISTERED ARCHITECT
MICHAEL WISNIEWSKI
STATE OF VERMONT

EXCAVATE TO UNDISTURBED SOIL. FILL SANDS WITH GRANULAR MATERIAL. FILL MECHANICALLY COMPACTED TO 95% COMPACTION. OUTSIDE SHOWIN APPROXIMATE ONLY.

SPACERS: 5/4 X 4 VERTICAL & HORIZONTAL STUDS IN GRAFT BRACE REFERRED CALLED EACH SIDE 1/4\"/>

1/2\"/>

1/2\"/>

1/2\"/>

1/2\"/>

1/2\"/>

1/2\"/>

1/2\"/>

1/2\"/>

1/2\"/>

1/2\"/>