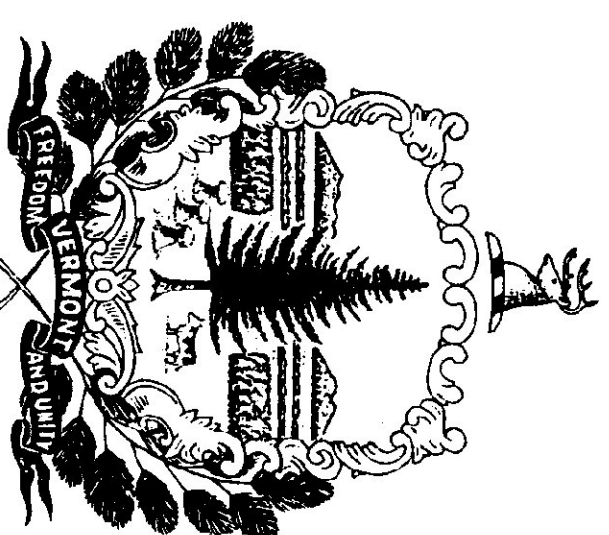


AGENCY OF TRANSPORTATION
STATE OF VERMONT
SALT AND SAND SHEDS
ST. ALBANS, VERMONT

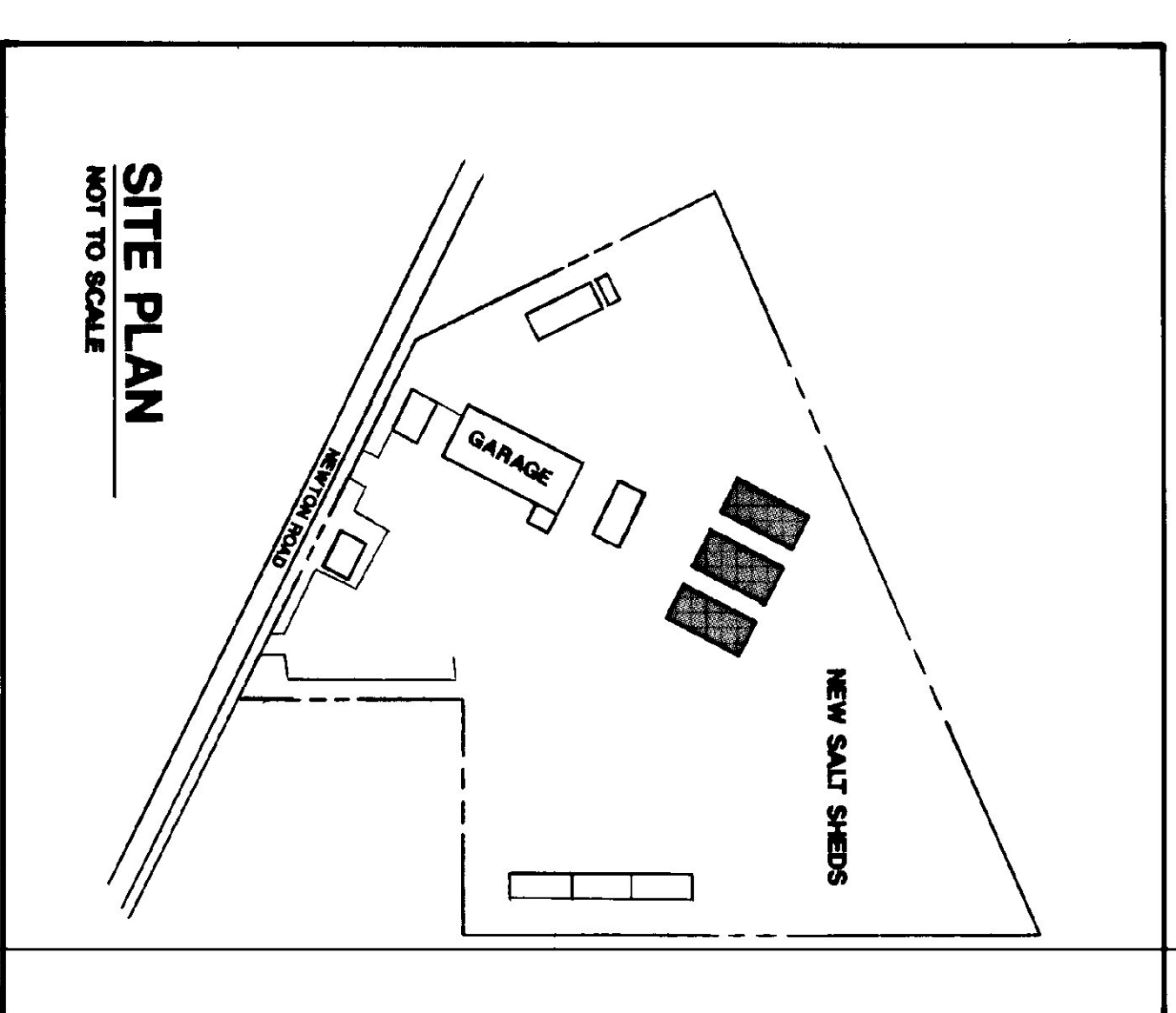
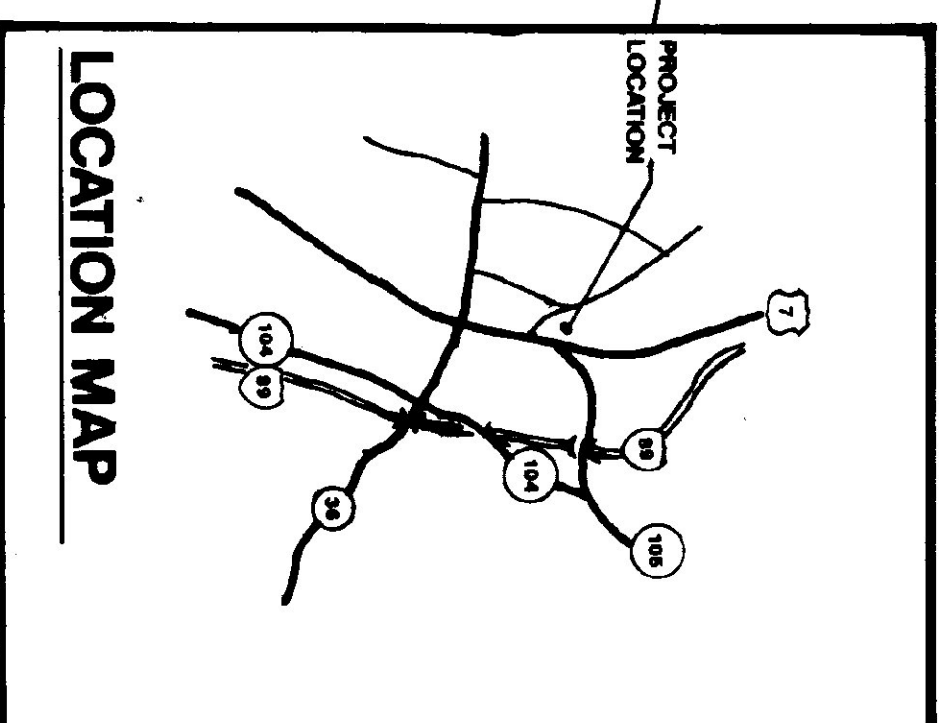
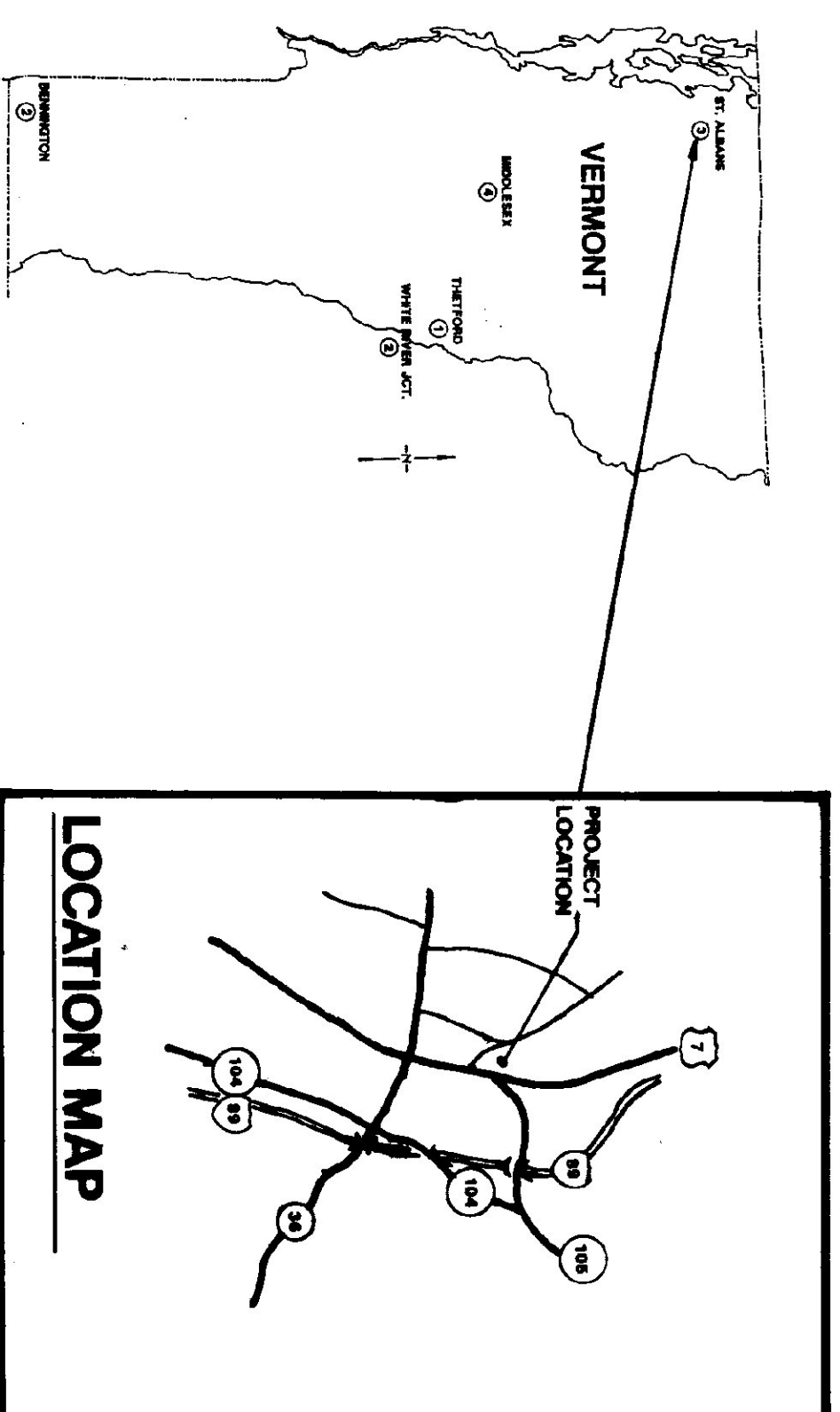
SEPTEMBER 5, 1991

AGENCY OF TRANSPORTATION
133 STATE STREET
MONTPELIER, VERMONT 05602
PATRICK J. GARAHAN, SECRETARY

AGENCY OF ADMINISTRATION
DEPARTMENT OF STATE BUILDINGS
2 GOVERNOR AIKEN AVENUE
MONTPELIER, VERMONT 05602
JOHN J. ZAMPIERI, COMMISSIONER

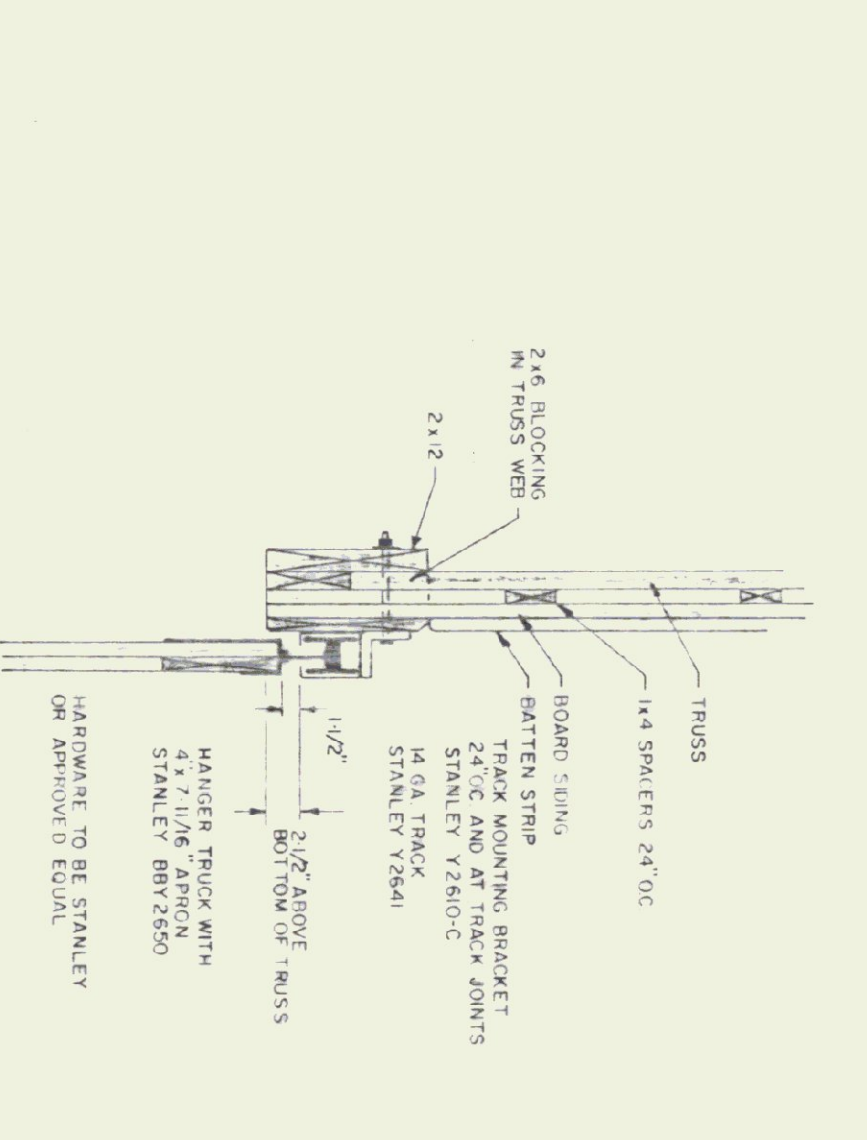
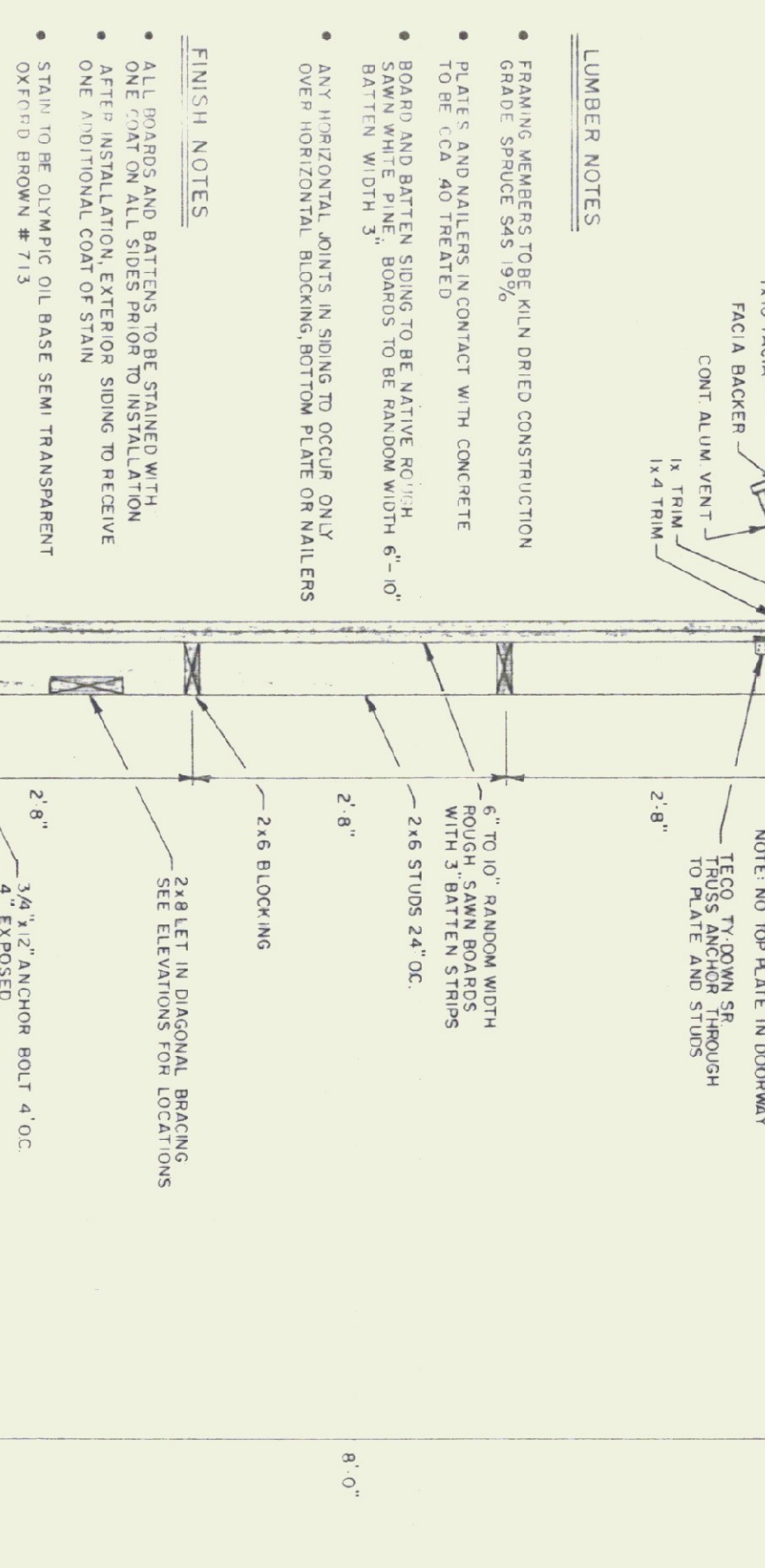


GOVERNOR HOWARD DEAN

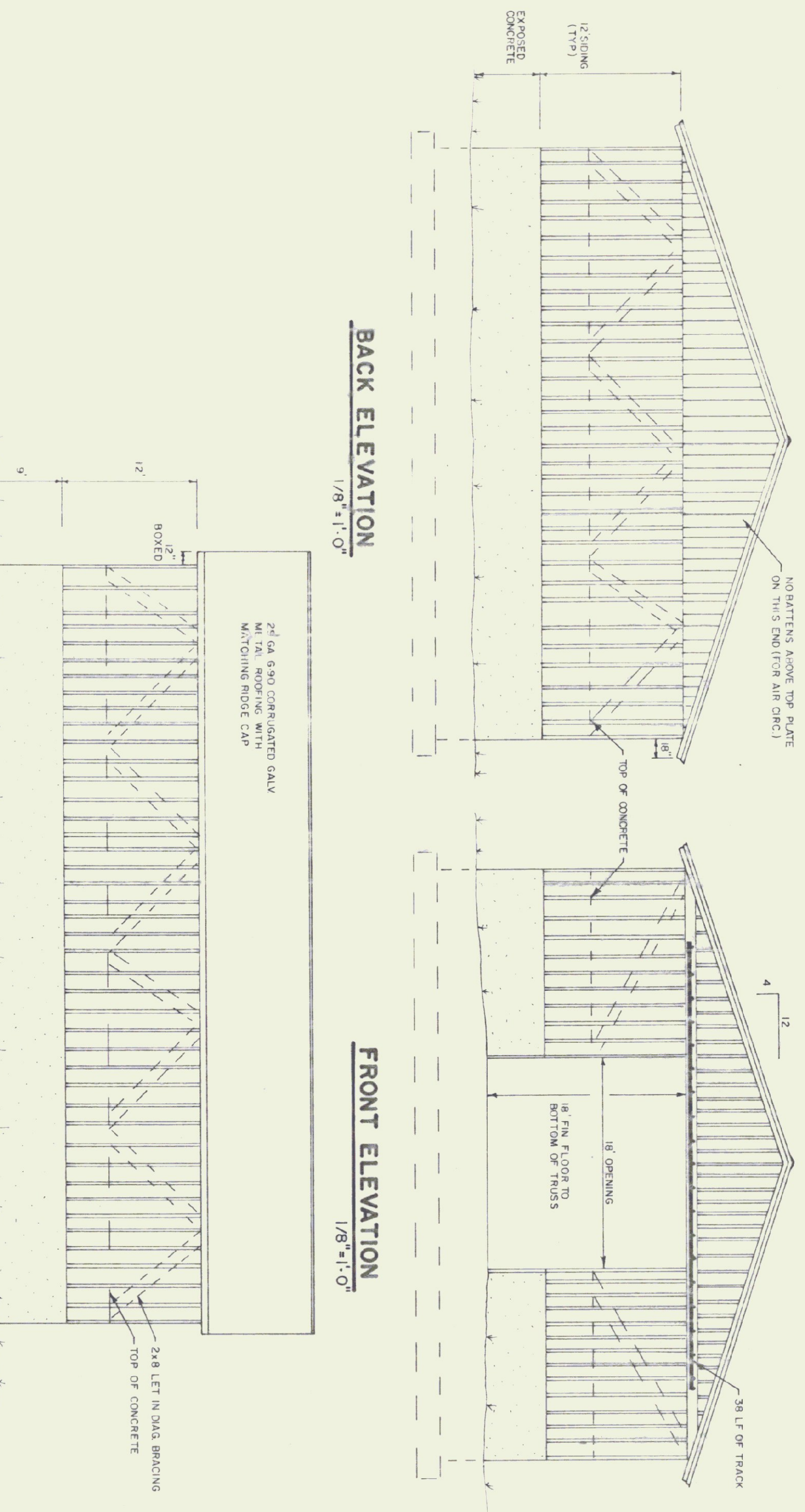




- TRUSS NOTES**
- TRUSS MANUFACTURER TO PROVIDE THE REPORT OF STATE BUILDINGS ENGINEER A SET OF ENGINEERED & STAMPED DRAWINGS FOR APPROVAL PRIOR TO TRUSS MANUFACTURE
 - TRUSS MANUFACTURER TO PROVIDE THE CONNECTION WITH ALL NECESSARY INSTRUCTIONS FOR PROPER TRUSS INSTALLATION, ANCHORAGE, BRACING, ETC.
 - TRUSS DESIGN LOADS IN ACCORDANCE WITH THE 1987 IBC/A FOR VERMONT
 - DEAD - AS CALCULATED FROM TRUSS & ROOF MATERIALS
 - WIND - PER ASR ROCA FOR V1 (50 PSF MIN.)
 - ICE - 5 LB/SQ FT ON BOTTOM CHORD
 - WIND - 23 PSF
 - DIAGONAL WIND BRACING REQUIRED

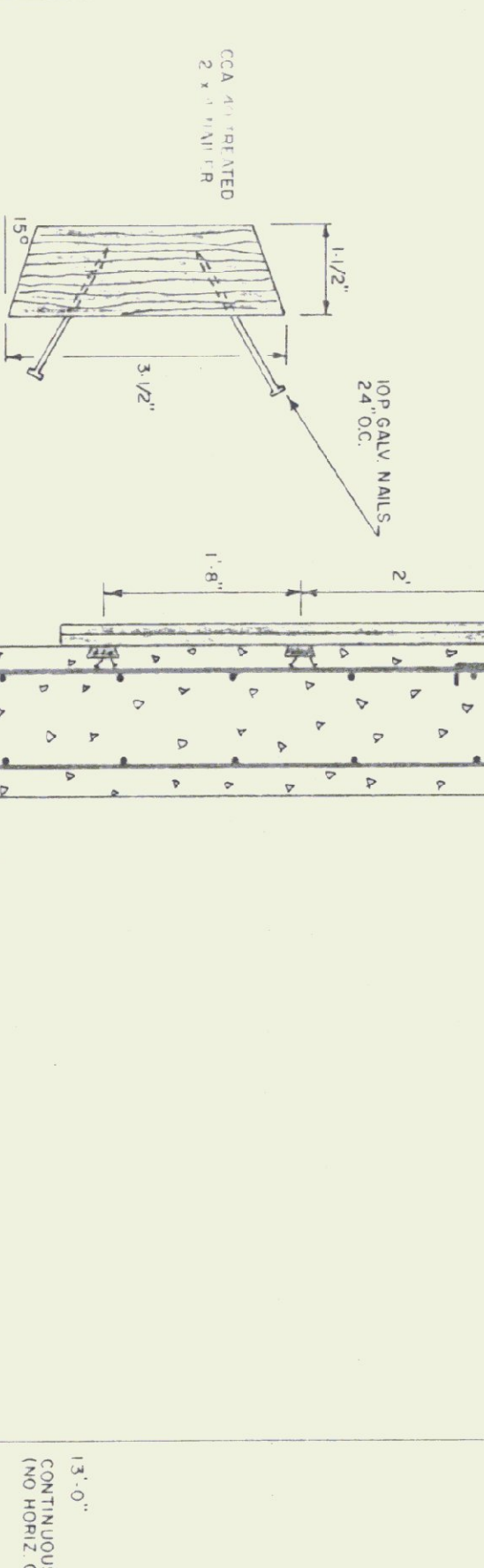


TRACK MOUNT DETAIL
NTS

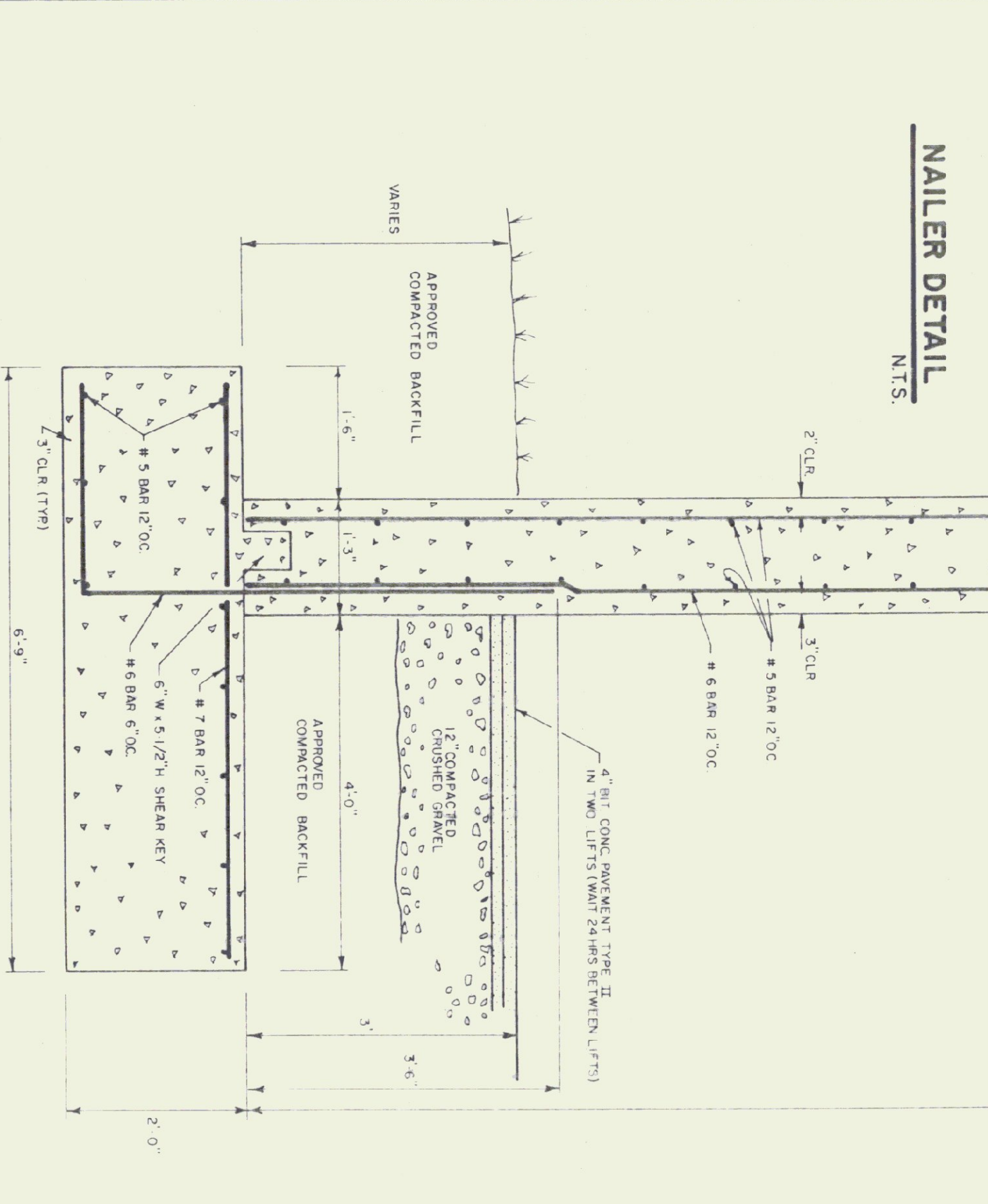


BACK ELEVATION
1/8"=1'-0"

FRONT ELEVATION
1/8"=1'-0"



NAILER DETAIL
NTS

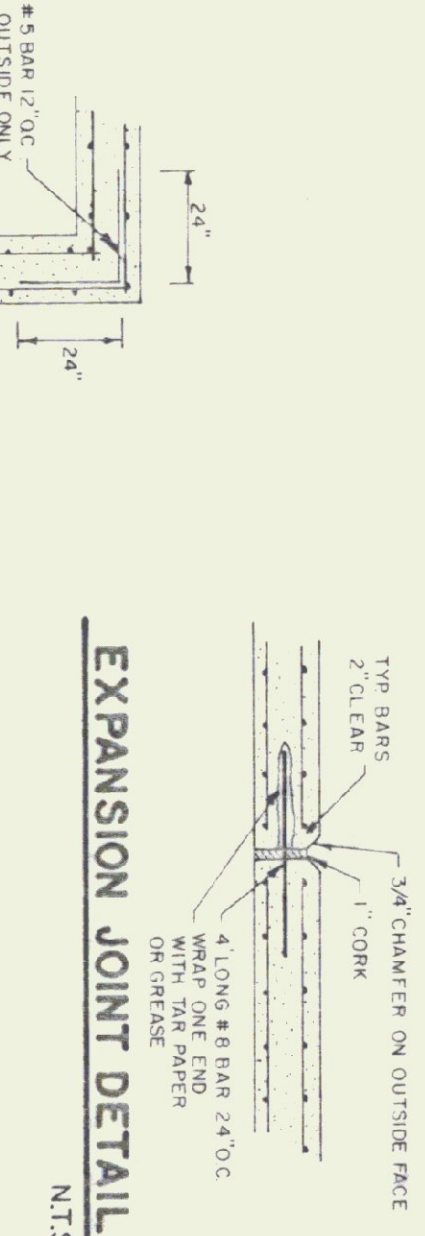


TYPICAL WALL SECTION
3/4"=1'-0"

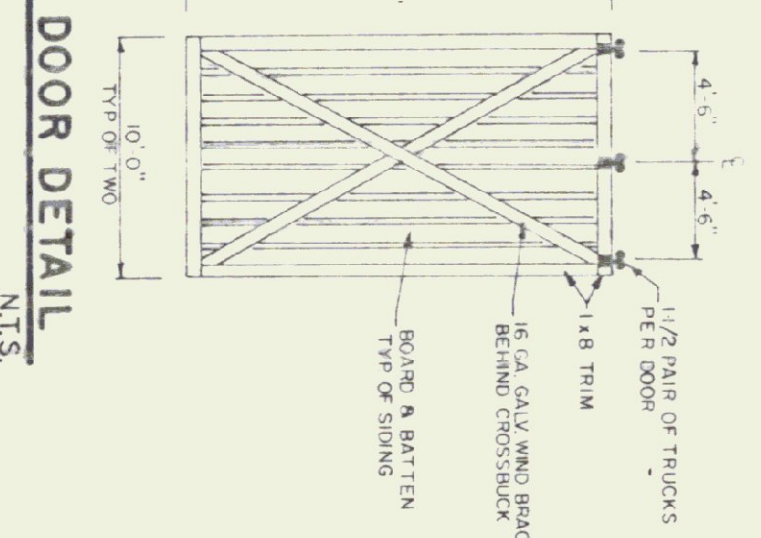


FOUNDATION PLAN
1/8"=1'-0"

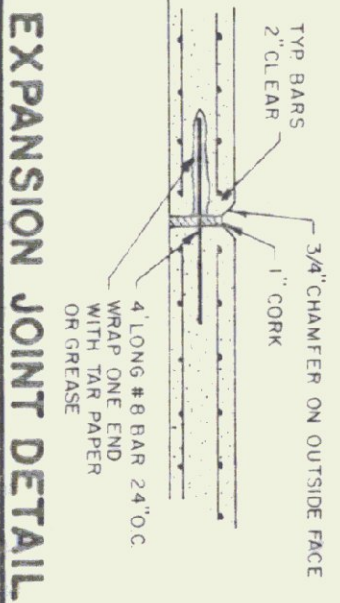
SIDE ELEVATION
1/8"=1'-0"



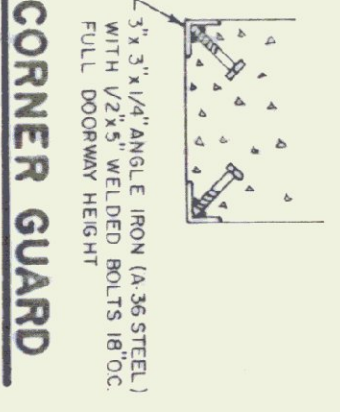
CORNER DETAIL
NTS



DOOR DETAIL
NTS



EXPANSION JOINT DETAIL
NTS



CORNER GUARD
NTS

CONCRETE NOTES

- ALL CONCRETE TO BE 3500 PSI AT 28 DAYS WITH MAXIMUM SLUMP OF 4"
- EXPOSED WALLS TO BE DRESS FINISHED
- 1/2" V. JOINTS IN EXPOSED FACE OF CONST. JOINTS
- 3/4" CHAMFER IN OUTER FACE OF EXPANSION JOINTS
- L. IRON CAST INTO WALL CORNERS AT DOOR OPENINGS
- RE BAR TO BE CONTINUOUS THROUGH CONST. JOINTS
- NO HORIZONTAL CONST. JOINTS IN WALLS
- NO CONST. OR EXP. JOINTS REQUIRED IN FOOTINGS
- ALL REBAR TO BE GRADE 60
- CONTRACTOR TO LEAVE NO METAL WITHIN 1" OF SURFACE OF CONCRETE AT ALL JOINTS AND ALL THE HOLES WITH AN APPROVED NON-SHRINK GROUT
- RE BAR TO BE STORED ON BLOCKING 4" MIN ABOVE GROUND
- CONCRETE SUPPLIER TO PROVIDE TEST CYLINDERS FOR TESTING BY OWNER
- CONCRETE SUPPLIER TO CONDUCT ON SITE AIR TEST

LUMBER NOTES

- FRAMING MEMBERS TO BE AIR DRIED CONSTRUCTION GRADE SPECIES 54S, 9%
- PLATES AND NAILED IN CONTACT WITH CONCRETE TO BE CCA 40 TREATED
- BATTEN AND BATTEN SING TO BE NATIVE 60% SAW WHITE PINE
- BATTEN WIDTH 3"
- ANY HORIZONTAL JOINTS IN SING TO OCCUR ONLY OVER HORIZONTAL BLOCKING BOTTOM PLATE OR NAILED

FINISH NOTES

- ALL PORTS AND BATTENS TO BE STAINED WITH ONE COAT ON ALL SIDES PRIOR TO INSTALLATION
- AFTER INSTALLATION, EXTERIOR SING TO RECEIVE ONE ADDITIONAL COAT OF STAIN
- STAIN TO BE OLIMPIC OIL BASE SEMI TRANSPARENT EXTERIOR BROWN # 713

STATE OF VERMONT
DEPARTMENT OF STATE BUILDINGS
AGENCY OF ADMINISTRATION
MONTPELIER, VERMONT

SALT/SAND SHED
ST. ALBANS MAINTENANCE FACILITY
ST. ALBANS VERMONT

50'x64'

DATE:	SCALE:	REVISIONS:	DWG. NO.
SEPT 5, 1991	AS NOTED		
DRAWN BY:	APPROVED BY:		
S. K. JANAWICZ			1 OF 1