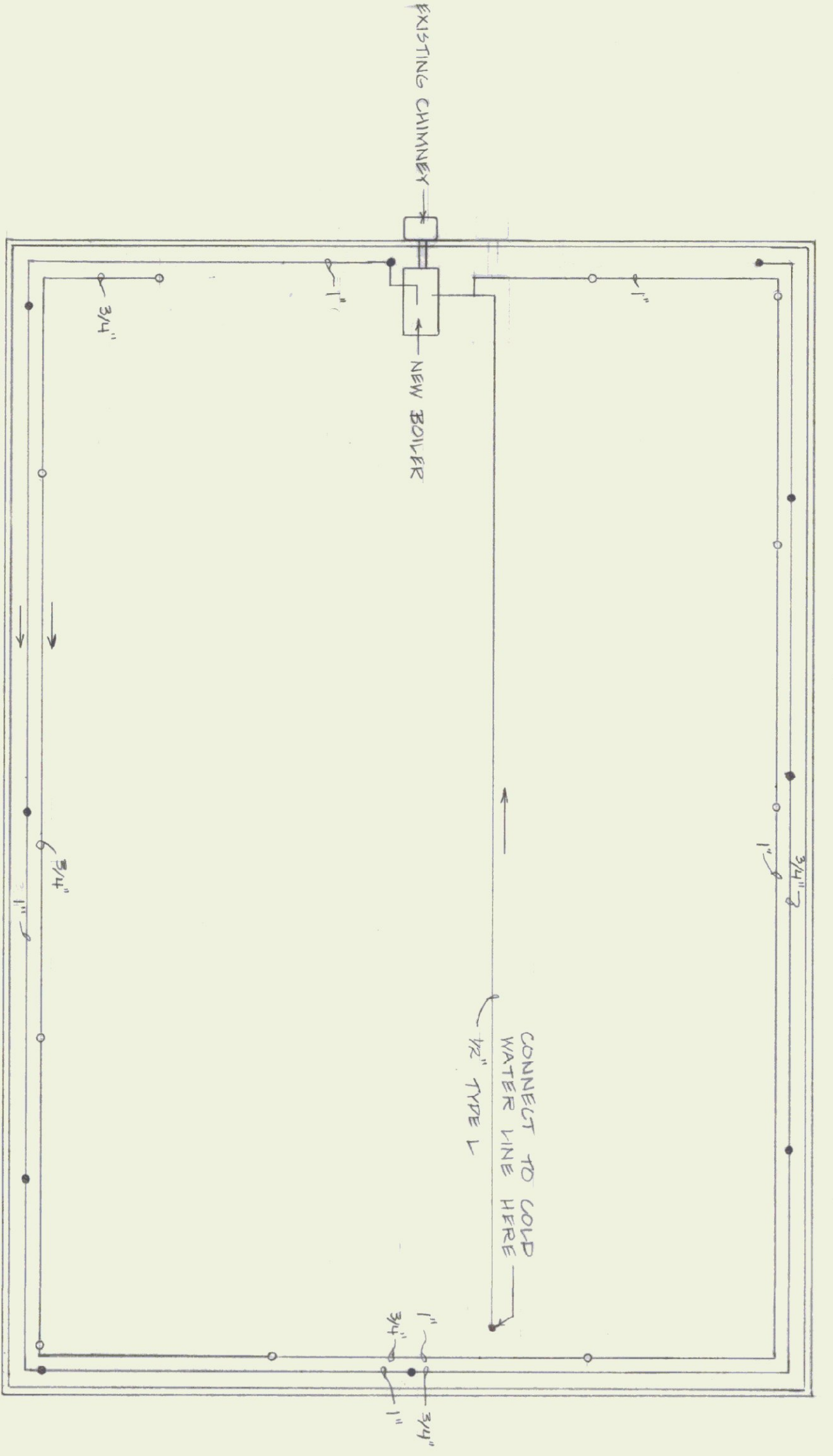


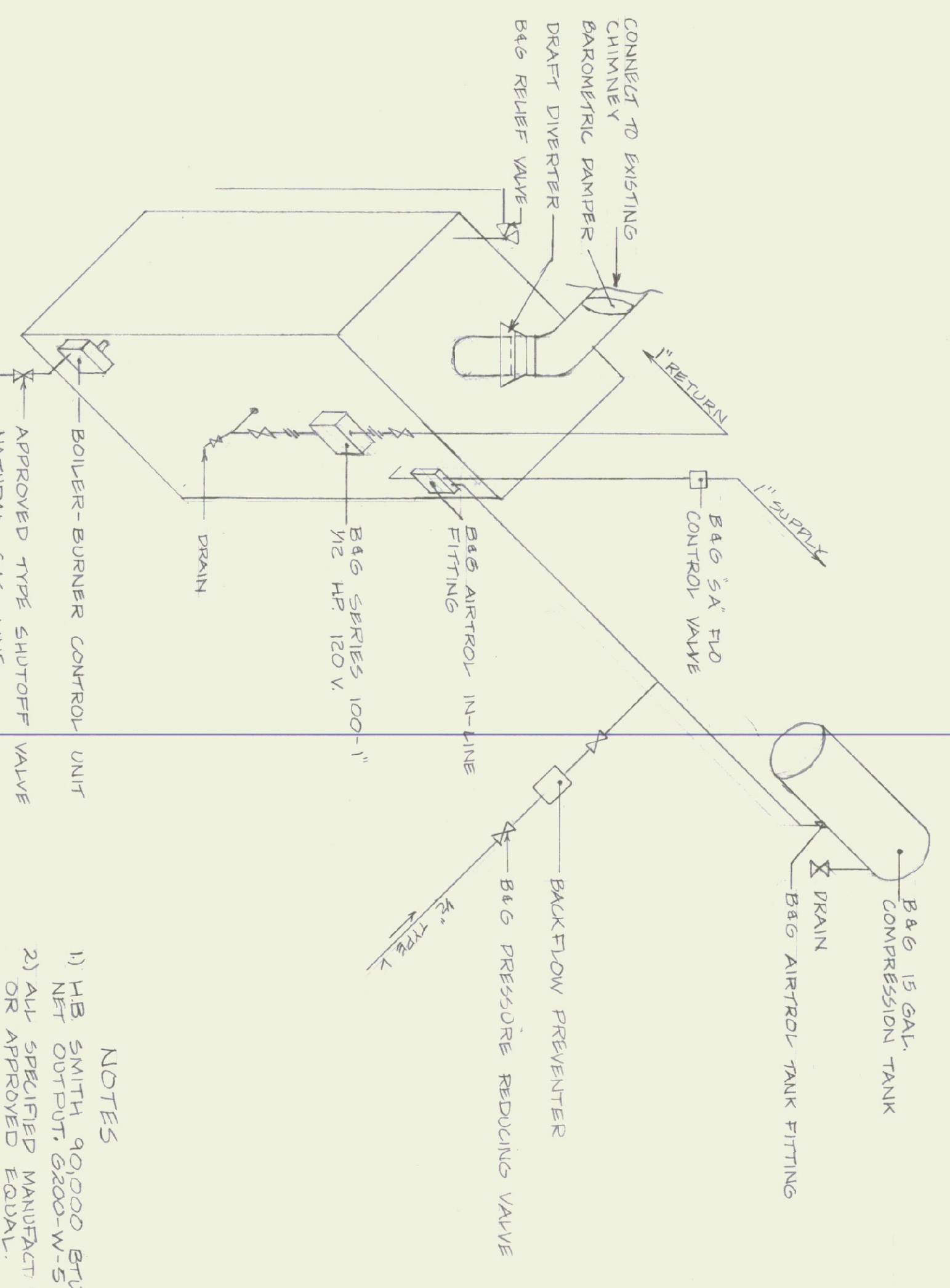
GARAGE - PLAN VIEW
SCALE 1/8"=1'-0"

- NOTES:
- 1) HANG HEATERS ON EXISTING W/ F BEAM (14' CEILING)
 - 2) REMOVE EXISTING OIL HEATERS & DUCTWORK.
 - 3) VENT GAS HEATER TO EXISTING STACK.
 - 4) EACH UNIT TO BE CONTROLLED BY A THERMOSTAT (TO BE LOCATED BY OWNERS DURING CONSTRUCTION)
 - 5) SUPPLY AND INSTALL 5 OVERHEAD FANS EACH WITH THERMOSTAT CONTROL AND OVER RIDE SWITCH, MODEL 134F-7 30 AMP/100W
 - 6) WIRING TO HEATERS & FANS ACCORDING TO CODE.



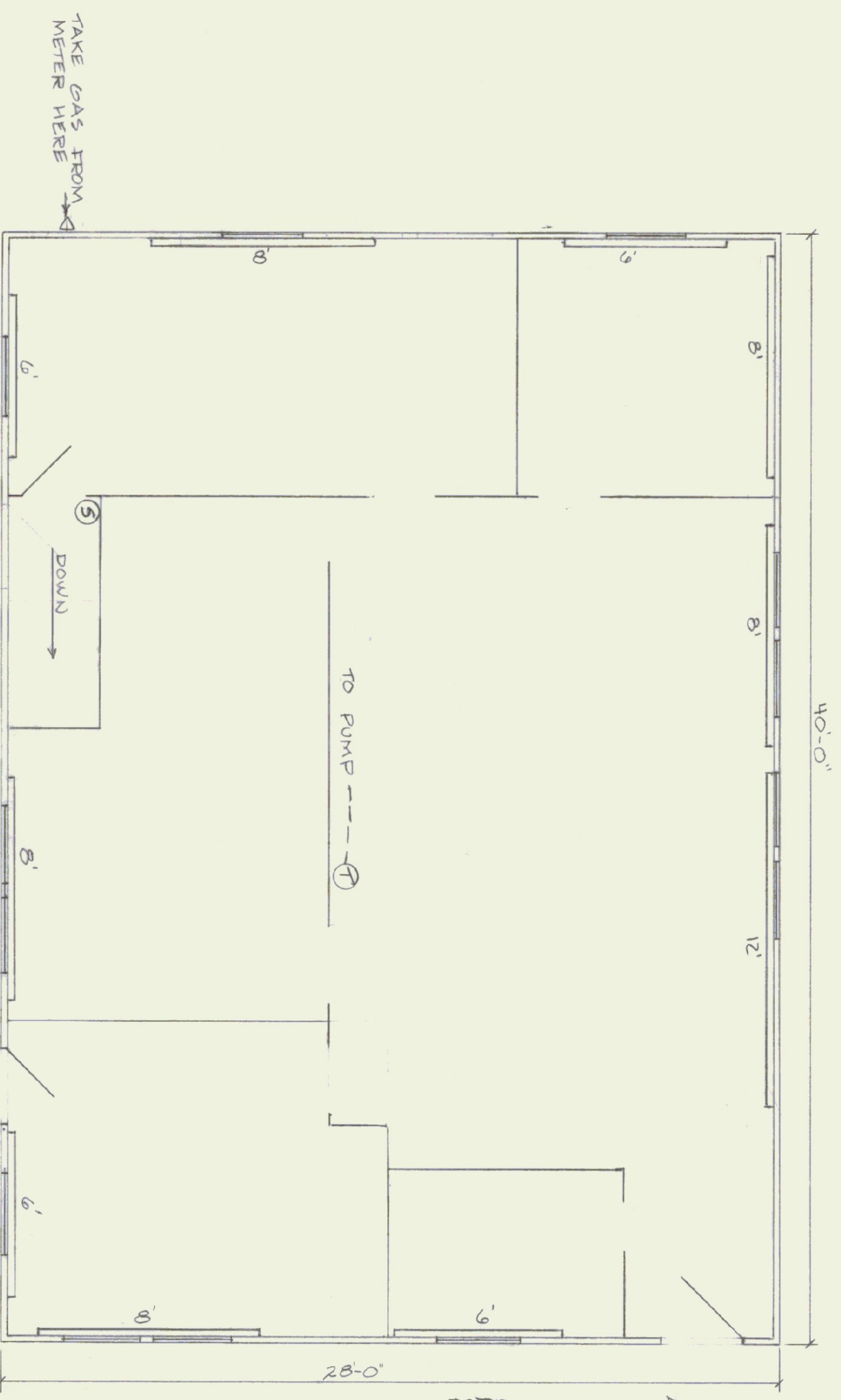
BASEMENT PLAN
SCALE 1/4"=1'-0"

- KEY
- TIE UP TO BASEBOARD RADIATION
 - TIE DOWN FROM BASEBOARD RADIATION



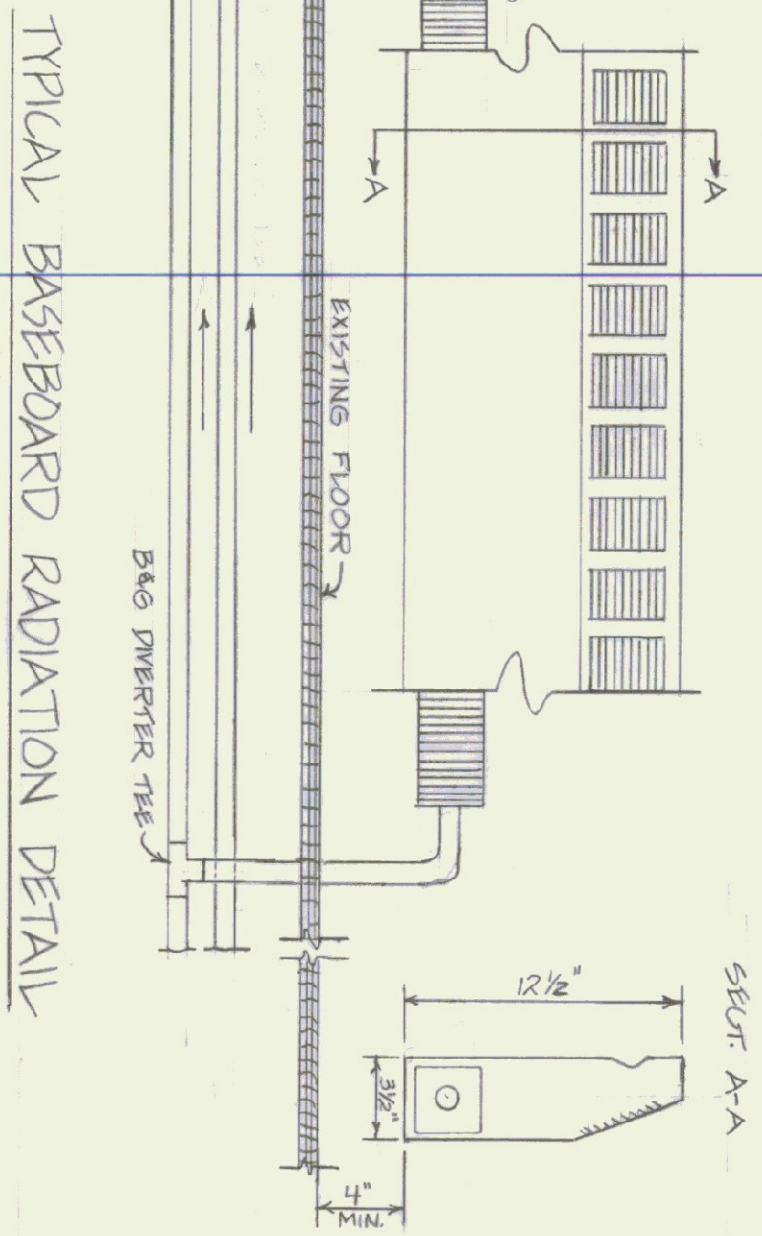
BOILER PLAN
NTS

- NOTES
- 1) 1/2" SMITH 90000 BTUH NET OUTPUT G200-W-5
 - 2) ALL SPECIFIED MANUFACT OR APPROVED EQUAL.



FIRST FLOOR PLAN
SCALE 1/4"=1'-0"

- NOTES
- 1) CENTER BASEBOARD RADIATION ON WINDOWS WHERE POSSIBLE.
 - 2) WIRING TO PUMP & BURNER ACCORDING TO CODE.
 - 3) ③ EMERGENCY BURNER SHUT OFF SWITCH.



TYPICAL BASEBOARD RADIATION DETAIL
N.T.S.

- NOTES
- DUNHAM BUSH TYPE S SLOPE TOP 1" COPPER IN 3"x3" FINS 50'/FOT & B&G BTUH/FT WITH 170° F WATER.

STATE OF VERMONT
DEPARTMENT OF STATE BUILDINGS
AGENCY OF ADMINISTRATION
MONTPELIER, VERMONT

AGENCY OF TRANSPORTATION
HEATING RENOVATION
DISTRICT 8 GARAGE AND OFFICE
LOWER NEWTON ROAD.

4T ALBANS,
DATE: 10-22-84 SCALE: AS SHOWN
DRAWN BY: K.TIBREAU APPROVED BY: H.S.C.

VERMONT
DWG NO.
REVISIONS:
1 OF 1