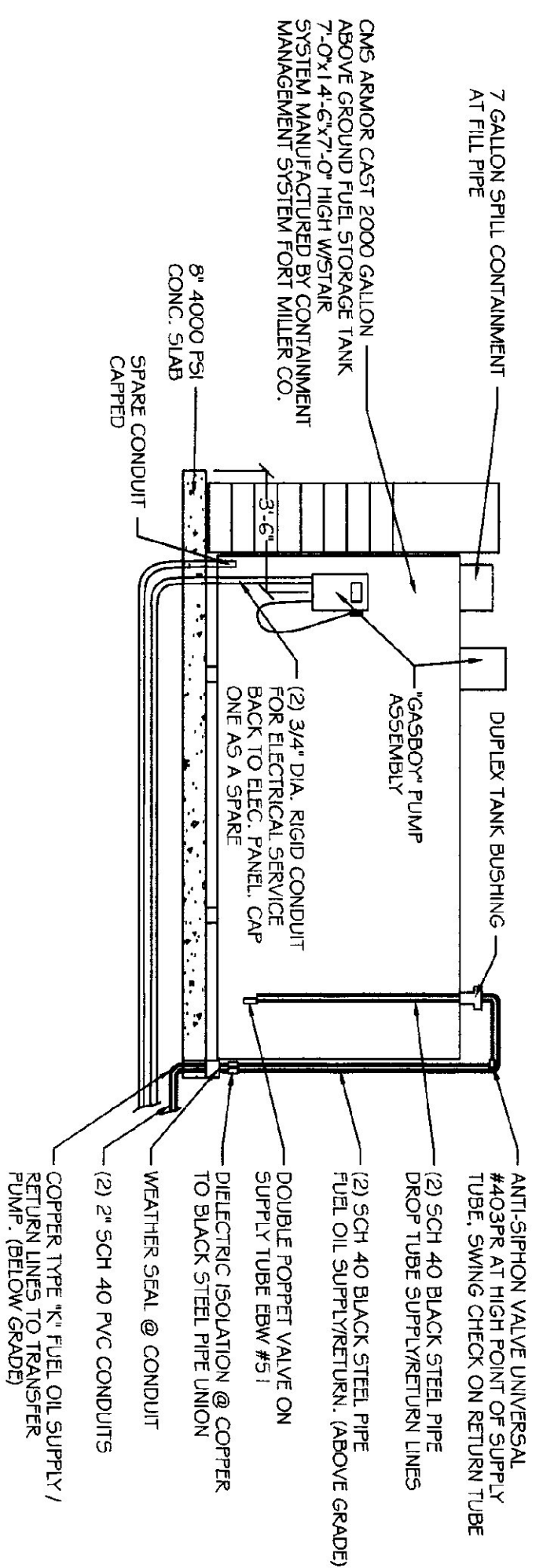


2000 GAL. ABOVE GROUND  
FUEL STORAGE TANK PAD  
SCALE: 1/4" = 1'-0"

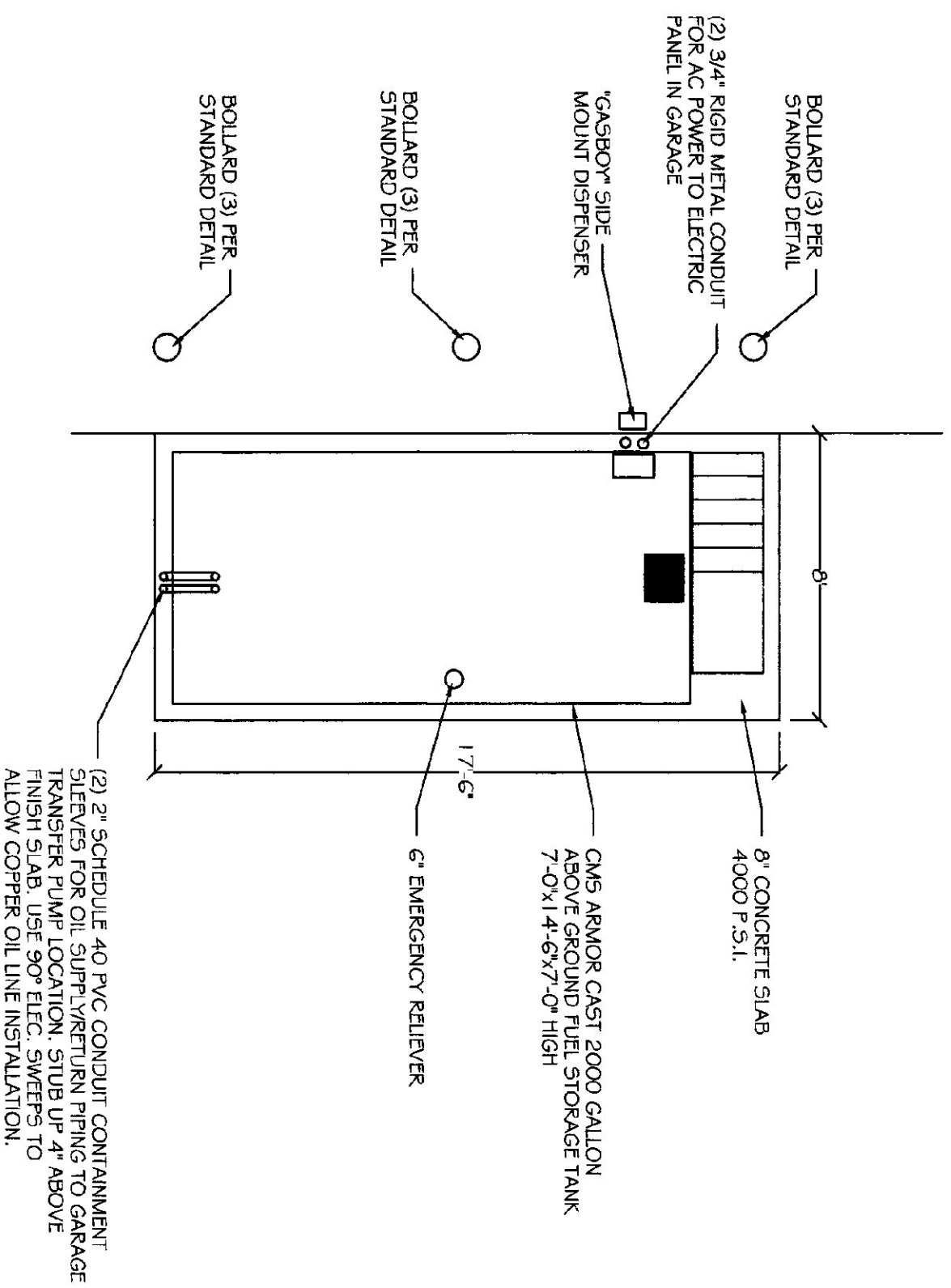
- NOTES:
1. BOX CUT NATIVE MATERIAL TO APPROPRIATE SIZE & DEPTH. PLACE (3) 6" LAYERS OF SPLICED SUB-BASE AND COMPACT TO 95% PROCTOR.
  2. TIE REINFORCING STEEL AS NOTED.
  3. PLACE OIL SUPPLY AND RETURN CONDUITS ON SOUTH END, 6" FROM EDGE OF SLAB TO INSIDE EDGE OF CONDUIT (CENTERED IN WIDTH OF SLAB).
  4. PLACE (2) 3/4" RIGID ELEC. CONDUIT FROM ELEC. PANEL BACK TO CORNER OF CONCRETE SLAB AS SHOWN ON DRAWINGS.
  5. SEAL ALL CONDUITS EXPOSED TO WEATHER TO PREVENT MOISTURE FROM ACCUMULATING IN CONDUIT. USED MECHANICAL SEALS OF APPROVED CAULKING ON EXPOSED CONDUITS OR AROUND FUEL LINES.
  6. POUR 4000 P.S.I. CONCRETE AND LIGHT BROOM FINISH.
  7. FUEL TANK SLAB TO COMPLY WITH TANK MANUFACTURERS REQUIREMENT.

- SPECIFICATIONS
1. CMS ARMOR CAST 2000 GALLON ABOVE GROUND FUEL STORAGE TANK
  2. INTEGRAL STAINLESS STEEL SPILL CONTAINER
  3. OVERFILL PREVENTION VALVE, 2" DROP TUBE, 2" DUST CAP
  4. MORRISON 8 1/8 CLOCK GAUGE
  5. LOCKABLE FLIP CAP TO STICK TANK
  6. TANK GAUGE STICK
  7. KALEJER MECHANICAL LEAK DETECTION GAUGE
  8. 2ND UP/DRAWT VENT OR PRESSURE VACUUM VENT 8 OZ. W/ PIPE
  9. (2) 6" EMERGENCY VENT 8 OZ
  10. GASBOY #9822, 3/4 HP COMMERCIAL PUMP W/ REMOTE LCD REGISTER
  11. GASBOY REMOTE REGISTER TANK MOUNT KIT
  12. INTERNAL FILTER, ADAPTER & ELEMENT
  13. 1" x 1/2" CU/D HOSE
  14. 1" Ø SWIVEL
  15. 1" SAFE BREAK COUPLING
  16. AUTO NOZZLE
  17. 1-1/2" ANGLE CHECK VALVE, SINGLE POPPET
  18. 1-1/2" EXTERNAL EMERGENCY VALVE
  19. 1-1/2" STAINLESS STEEL TUX CONNECTOR
  20. DOUBLE STAIR BUSHING 4 WITH (2) 3/4"
  21. (2) SUCTON TUBES
  22. 4" COUPLING
  23. STAIR, MODEL SP2000R



2000 GAL. ABOVE GROUND  
FUEL STORAGE TANK  
SCALE: 1/4" = 1'-0"

- NOTES:
1. FASTEN OIL LINES & ELECTRICAL CONDUIT SECURELY ACCORDING TO TANK MANUFACTURERS INSTRUCTIONS.
  2. CONTRACTOR TO MAKE ALL CONDUIT AND ELECTRICAL CONNECTIONS BETWEEN PANEL / PUMP AND REGISTER PER MANUFACTURERS INSTRUCTIONS.
  3. FOR SIZES ON FUEL SUPPLY / RETURN PIPING SEE SHEET M-1.



PLAN VIEW  
SCALE: 1/4" = 1'-0"



STATE OF VERMONT  
Department of Buildings  
and General Services  
Agency of Administration  
Montpelier, Vermont



MONTGOMERY A.O.T. GARAGE  
RADIANT HEATING  
FUEL STORAGE TANK

MONTGOMERY,

VERMONT

REVISIONS

SCALE: AS NOTED  
DATE: MAY 2003  
DRAWN BY: N. HERSEY  
APPR. BY: TEIGH

MONTGOMERY  
A.O.T. GARAGE  
RADIANT  
HEATING  
FUEL STORAGE  
TANK

F-1

# OF #